

FROM THE FOUNDER OF THE #VIKISEWS BRAND

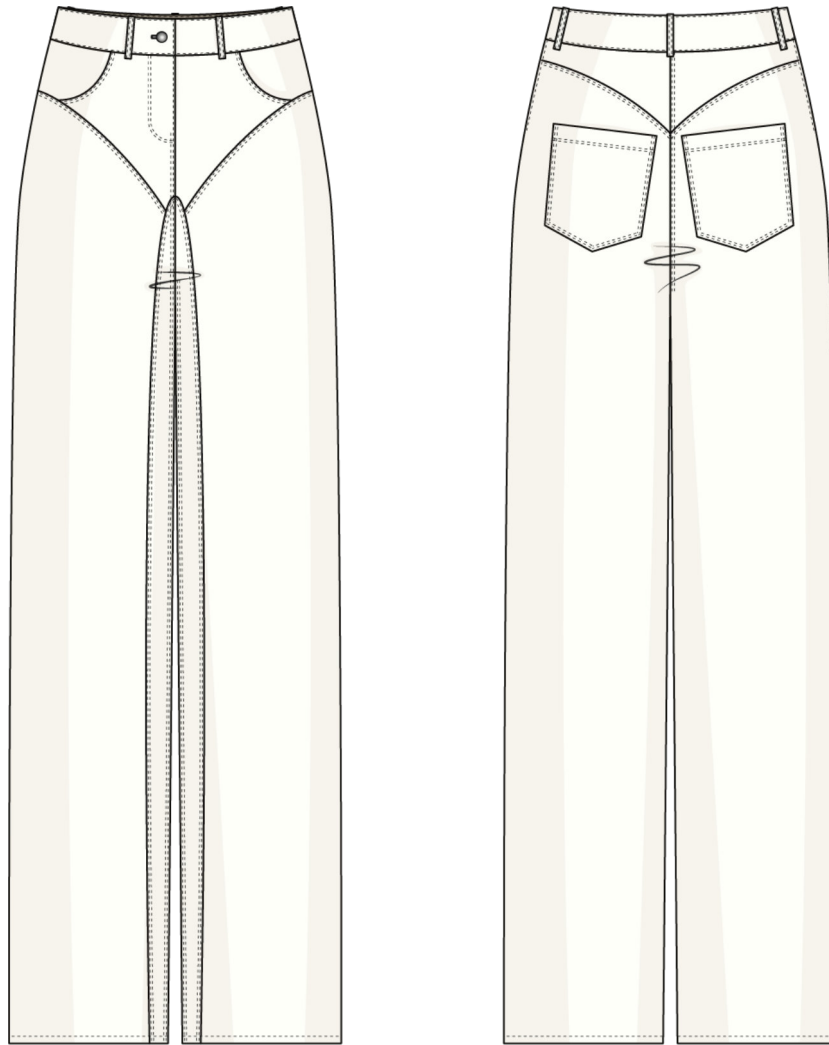


Back in 2016, when I was working on my first set of sewing instructions, I was trying to write them in such a way that even a complete beginner could easily understand and use them to create their very first garment. These instructions laid the foundation for the Vikisews brand, its vision and its mission. I wanted to create modern patterns with the utmost detailed and clear instructions.

Now, with each new collection we are constantly improving our instructions, amending them and adding more relevant details. By the time the final product reaches you, our drafters, correctors, and editors would have spent weeks perfecting every word and every photograph. If you compile a few of our instructions together, you will get a sewing manual that will assist you in sewing all kinds of garments at any difficulty level.

And I would be very happy if these instructions helped you to turn your hobby into a lifelong passion... Enjoy the process! Create your ultimate dream wardrobe! Wear your garments proudly for years to come!

If you have any questions, please contact us at info@vikisews.com — we are always there to help.



JEWEL PATTERN DESCRIPTION

Jewel is a pair of loose-fitting, straight-cut pants sitting 8 cm (3 1/8") below the natural waistline. The waistband features topstitched belt loops. The front leg is made up of three pieces. The top front features faux side pockets and design lines. The back is designed with a yoke and patch pockets. The pants have a fly front zipper closure. The waistband fastens with a stud button and buttonhole. All the seams feature decorative topstitching. The pants are floor-length.



IMPORTANT!

The contents of this pattern are copyright protected and belong exclusively to Vikisews. You may use Vikisews patterns for personal use. It is prohibited to share Vikisews patterns and instructions with third parties, as well as to publish patterns and instructions online for public access. **Non-compliance with the mentioned rules is a violation of the US copyright law and may result in civil liability and criminal prosecution.**

You may use Vikisews patterns for commercial use, to sew custom-made garments and/or create fashion collections, on the condition that the patterns are solely used in a manufacturing setting and are not further shared with individuals.

TOTAL EASE ALLOWANCE

	Waistline ease (estimated)	Hipline ease
cm	17.3–20.6	2.6–4.1
inches	6 3/4–8 1/8	1–1 5/8

GARMENT LENGTH

Height, cm	Side seam length including waistband, cm	Height, ft	Side seam length including waistband, in
1 (154–160)	105.1–107.1	1 (5'1"–5'3")	41 3/8–42 1/8
2 (162–168)	109.1–111.1	2 (5'4"–5'6")	43–43 3/4
3 (170–176)	113.1–115.1	3 (5'7"–5'9")	44 1/2–45 3/8
4 (178–184)	117.1–119.1	4 (5'10"–6'1")	46 1/8–46 7/8

FINISHED HEM WIDTH

Size	34	36	38	40	42	44	46	48	50	52
cm	21.4	22.4	23.4	24.4	25.4	26.4	27.4	28.4	29.4	30.4
inches	8 3/8	8 7/8	9 1/4	9 5/8	10	10 3/8	10 3/4	11 1/8	11 5/8	12

SUGGESTED FABRIC

To sew these pants, choose fabrics with the following properties:

- medium weight, pliable, breathable, non-stretch or with very little stretch, opaque
- the fiber content can include natural fibers (cotton) and blends (cotton + viscose, etc.)
- the following fabrics are recommended: denim, corduroy

Attention! We do not recommend using lightweight, thin fabrics.

For the pocket lining, we recommend using cotton or poplin.

The garment in the photo is made of denim. The fabric is medium weight, pliable and non-stretch. The fiber content is 100% cotton; the fabric weight is 346 g/m2.

The pocket lining is 100% cotton.

4. One metal pant zipper, 20 cm (7 7/8") long, for all sizes in all heights
5. Bias-cut fusible stay tape, 1 cm (3/8") wide — 0.7 m (3/4 yd)
6. One metal stud button for jeans, 2–2.5 cm (3/4–1") in diameter
7. Matching thread — 5 spools (1 spool for the sewing machine + 4 spools for the overlocker)
8. Matching (or contrasting) topstitching thread (for example, Madeira No. 35) — 2 spools

TOOLS AND EQUIPMENT

- sewing machine for construction
- overlocker for finishing raw edges. This may be replaced with a stretch overlock stitch or a zigzag stitch on the sewing machine (overlock or zigzag stitch width 2–3 mm, stitch length 2.5 mm)
- buttonhole foot for the sewing machine
- stitch-in-the-ditch foot for the sewing machine (optional)
- stud button press tool with a set of molds

PATTERN PIECES LIST

1. From main fabric:

- top front leg — cut 2
- front leg — cut 2
- side pocket — cut 2
- back yoke — cut 2
- back leg — cut 2
- front leg inner panel — cut 2
- fly extension — cut 1
- fly shield — cut 1
- patch pocket — cut 2
- waistband — cut 1
- belt loop — cut 1

2. From lining fabric:

- side pocket lining — cut 2

IMPORTANT! Don't forget to transfer all pattern markings and notches onto the fabric.

3. From interfacing:

- waistband — cut 1
- fly extension — cut 1
- fly shield — cut 1
- patch pocket top edge — cut 2

SEAM ALLOWANCES

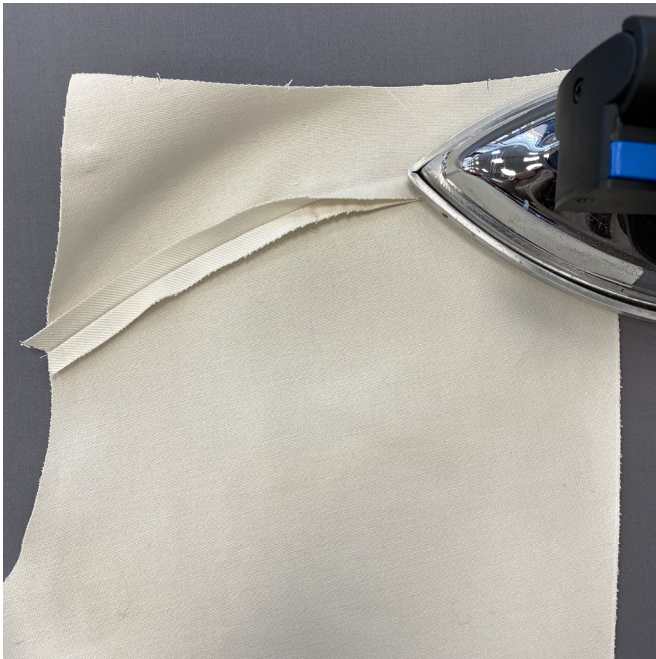
All pattern pieces include seam allowances as follows:

- garment hem allowance and patch pocket top edge — 2.5 cm (1")
- all other edges — 1 cm (3/8")

Take this into account when laying out pattern pieces on the fabric.



Press the seam allowances open.



Then press the seam allowances towards the back leg.



Finish the seam allowances on the overlocker, with the back yoke facing up. Press the seam.