

# FROM THE FOUNDER OF THE #VIKISEWS BRAND

---



Back in 2016, when I was working on my first set of sewing instructions, I was trying to write them in such a way that even a complete beginner could easily understand and use them to create their very first garment. These instructions laid the foundation for the Vikisews brand, its vision and its mission. I wanted to create modern patterns with the utmost detailed and clear instructions.

Now, with each new collection we are constantly improving our instructions, amending them and adding more relevant details. By the time the final product reaches you, our drafters, correctors, and editors would have spent weeks perfecting every word and every photograph. If you compile a few of our instructions together, you will get a sewing manual that will assist you in sewing all kinds of garments at any difficulty level.

And I would be very happy if these instructions helped you to turn your hobby into a lifelong passion... Enjoy the process! Create your ultimate dream wardrobe! Wear your garments proudly for years to come!

If you have any questions, please contact us at [info@vikisews.com](mailto:info@vikisews.com) — we are always there to help.



## KAIA PATTERN DESCRIPTION

---

Kaia is a semi-fitted blouse with a straight silhouette. The front is shaped with bust darts. The double-layer back yoke is brought over to the front. The blouse features a turn-down shirt collar with a separate collar stand and long, set-in, drop-shoulder shirt sleeves. At the bottom, the sleeve has pleats and a sleeve vent finished with a sleeve placket. Applied cuffs close with buttons and buttonholes. The blouse fastens with buttons and buttonholes at the center front. The curved garment hem features slits in the side seams.



## IMPORTANT!

---

The contents of this pattern are copyright protected and belong exclusively to Vikisews. You may use Vikisews patterns for personal use. It is prohibited to share Vikisews patterns and instructions with third parties, as well as to publish patterns and instructions online for public access. **Non-compliance with the mentioned rules is a violation of the US copyright law and may result in civil liability and criminal prosecution.**

You may use Vikisews patterns for commercial use, to sew custom-made garments and/or create fashion collections, on the condition that the patterns are solely used in a manufacturing setting and are not further shared with individuals.

# TOTAL EASE ALLOWANCE

	Bust ease	Waistline ease	Hipline ease	Upper arm ease
cm	15.5–19.9	35.8–37.6	10.8–12.6	8.9–10.0
inches	6 1/8–7 7/8	14 1/8–14 3/4	4 1/4–5	3 1/2–3 7/8

# GARMENT LENGTH, SLEEVE LENGTH

Height, cm	Back length, cm	Sleeve length including shoulder and cuff width, cm
1 (154–160)	65.5–67.3	74.5–78.6
2 (162–168)	68.5–70.3	76.7–81.3
3 (170–176)	71.5–73.3	78.6–83.2
4 (178–184)	74.5–76.3	80.6–85.2

Height, ft	Back length, in	Sleeve length including shoulder and cuff width, in
1 (5'1"–5'3")	25 3/4–26 1/2	29 3/8–31
2 (5'4"–5'6")	27–27 5/8	30 1/4–32
3 (5'7"–5'9")	28 1/8–28 7/8	31–32 3/4
4 (5'10"–6'1")	29 3/8–30	31 3/4–33 1/2

# SUGGESTED FABRIC

To sew this blouse, choose blouse and dress-weight fabrics with the following properties:

- moderately lightweight, pliable, soft, non-stretch or low-stretch, opaque
- the fiber content can include natural fibers (silk, cotton, linen), artificial fibers (viscose), blends (viscose + silk, cotton + polyester, cotton + viscose, etc.), and synthetics (polyester, polyester + elastane)
- the following fabrics are recommended: silk, artificial silk, cotton, linen, cupro, shirting, lightweight fine wale corduroy, modal.

**Attention!** We do not recommend stretchy knit fabrics, heavyweight, bulky fabrics (coating, corduroy), and lightweight, sheer fabrics (chiffon, stretch lace).

The blouse in the photo is made of blouse and dress-weight silk. The fabric is resilient, soft, double-faced, and has very little stretch. The fiber content is 100% polyester.

# PATTERN PIECES LIST

---

## 1. From main fabric:

- front — cut 2
- back yoke — cut 2 on fold
- back — cut 1 on fold
- sleeve — cut 2
- undercollar — cut 1 on fold
- upper collar — cut 1 on fold
- collar stand — cut 2
- cuff — cut 2
- sleeve placket – cut 2.

**IMPORTANT!** Don't forget to transfer all pattern markings and notches onto the fabric.

## 2. From interfacing:

- cuff — cut 2
- sleeve placket – cut 2
- upper collar — cut 1 on fold
- undercollar — cut 1 on fold
- collar stand — cut 2.

Additionally, cut two interfacing strips, 6.5 cm (2 1/2") wide, to interface the grown-on placket on the front piece. The interfacing strips should be cut on the straight grain (parallel to the selvedge).

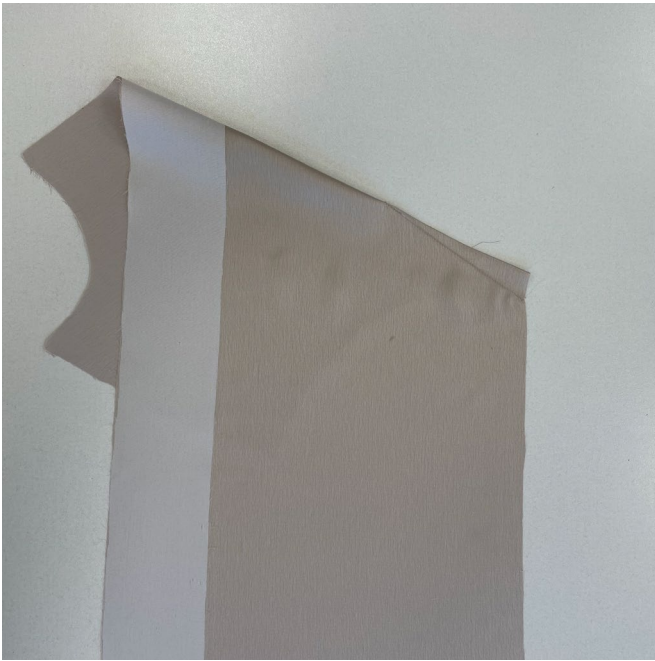
# SEAM ALLOWANCES

---

All pattern pieces include seam allowances as follows:

- garment hem allowance — 1.5 cm (5/8")
- all other edges — 1 cm (3/8").

Take this into account when laying out pattern pieces on the fabric.



On the wrong side of the front piece, match the dart legs transferred from the pattern. Pin and machine-stitch. Backstitch at the beginning of the seam. Leave long thread ends at the dart point. Tie the threads into a knot and hide them inside the dart using a hand sewing needle.



Press the dart flat.



Then press the dart upwards.