

FROM THE FOUNDER OF THE #VIKISEWS BRAND

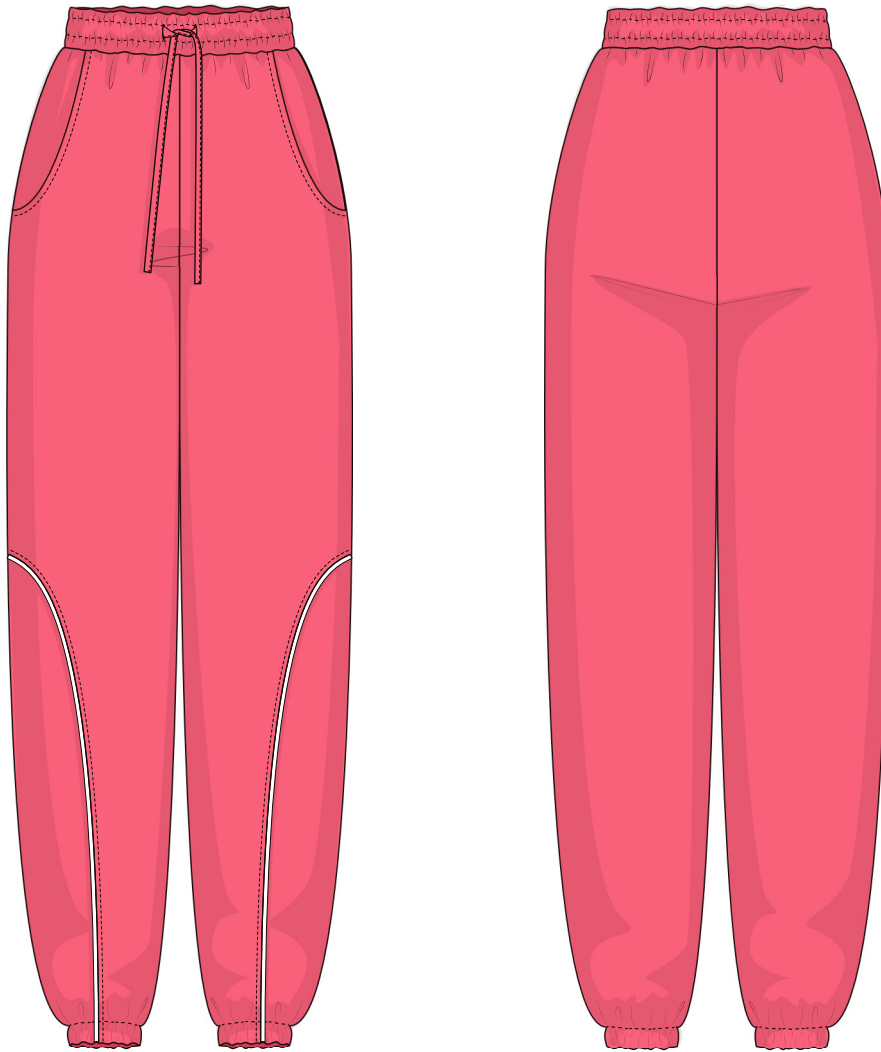


Back in 2016, when I was working on my first set of sewing instructions, I was trying to write them in such a way that even a complete beginner could easily understand and use them to create their very first garment. These instructions laid the foundation for the Vikisews brand, its vision and its mission. I wanted to create modern patterns with the utmost detailed and clear instructions.

Now, with each new collection we are constantly improving our instructions, amending them and adding more relevant details. By the time the final product reaches you, our drafters, correctors, and editors would have spent weeks perfecting every word and every photograph. If you compile a few of our instructions together, you will get a sewing manual that will assist you in sewing all kinds of garments at any difficulty level.

And I would be very happy if these instructions helped you to turn your hobby into a lifelong passion... Enjoy the process! Create your ultimate dream wardrobe! Wear your garments proudly for years to come!

If you have any questions, please contact us at info@vikisews.com — we are always there to help.



TRUA PATTERN DESCRIPTION

Trua is a pair of semi-fitted pants with a straight silhouette. The applied elasticated waistband is finished with two rows of topstitching that form a casing with a cord threaded through it. The front features slash pockets and design lines decorated with piping. The pants are hemmed with a casing for elastic. The garment is ankle-length.



IMPORTANT!

The contents of this pattern are copyright protected and belong exclusively to Vikisews. You may use Vikisews patterns for personal use. It is prohibited to share Vikisews patterns and instructions with third parties, as well as to publish patterns and instructions online for public access. **Non-compliance with the mentioned rules is a violation of the US copyright law and may result in civil liability and criminal prosecution.**

You may use Vikisews patterns for commercial use, to sew custom-made garments and/or create fashion collections, on the condition that the patterns are solely used in a manufacturing setting and are not further shared with individuals.

TOTAL EASE ALLOWANCE

	Waistline ease	Hipline ease
cm	22.7–23	9–10.5
inches	8 7/8–9	3 1/2–4 1/8

GARMENT LENGTH

Height, cm	Side seam length including waistband, cm
1 (154–160)	99.3–101.2
2 (162–168)	103.6–105.5
3 (170–176)	107.9–109.8
4 (178–184)	112.2–114.1

Height, ft	Side seam length including waistband, in
1 (5'1"–5'3")	39 1/8–39 7/8
2 (5'4"–5'6")	40 3/4–41 1/2
3 (5'7"–5'9")	42 1/2–43 1/4
4 (5'10"–6'1")	44 1/8–44 7/8

SUGGESTED FABRIC

To sew this garment, choose knit fabrics with the following properties:

- soft, breathable, non-stretch or with very little stretch, medium-weight
- the fiber content can include natural fibers (wool, cotton), artificial fibers (viscose), blends (wool + polyester, cotton + polyester, cotton + elastane, etc.), and synthetics (polyester, polyester + elastane)
- the following fabrics are recommended: heavyweight sweatshirt fleece

Attention! We do not recommend lightweight knit fabrics, jersey fabrics, French terry and lighter weight sweatshirting.

The garment in the photo is made of heavyweight sweatshirt fleece. The fabric is soft and low-stretch. The fiber content is a blend of viscose, polyester and elastane.

3. 5.5 cm (2 1/8") of lightweight interfacing
4. 1.7 m (1 7/8 yd) of 1 cm (3/8") wide twill tape for the waistband casing
5. 1.3 m (1 3/8 yd) of 1.5 cm (5/8") wide knit piping
Alternatively, you can make your own piping. You will need:
 - 3.5 cm (1 3/8") of 160–180 cm (63–70") wide lightweight knit fabric
 - 1.3 m (1 3/8 yd) of cotton cord, 3 mm (1/8") in diameter
6. Matching thread — 5 spools (1 spool for the sewing machine + 4 spools for the overlocker)
7. Matching thread for the piping — 1 spool
8. Stitched bias-cut fusible stay tape with stitch reinforcement, 1 cm (3/8") wide — 0.6 m (5/8 yd)

TOOLS AND EQUIPMENT

- sewing machine for construction
- overlocker for construction and finishing raw edges. This may be replaced with a stretch overlock stitch or a zigzag stitch on the sewing machine (overlock or zigzag stitch width 2–3 mm, stitch length 2.5 mm)
- elastic threader (may be replaced with a safety pin)
- one-sided foot for piping
- buttonhole foot

IMPORTANT! We recommend using specialty needles when working with knit fabrics (for example, *STRETCH*, *SUPER STRETCH*, *JERSEY*, etc.). These are ballpoint needles, they part the threads of the fabric you are stitching rather than piercing them.

PATTERN PIECES LIST

1. From main fabric:

- front leg — cut 2
- front leg insert — cut 2
- back leg — cut 2
- waistband — cut 1 on fold
- pocket bag — cut 2
- slash pocket — cut 2

IMPORTANT! Don't forget to transfer all pattern markings and notches onto the fabric.

2. From interfacing:

- 6 cm (2 3/8") wide and 5.5 cm (2 1/8") long interfacing strips for buttonholes placement area on the waistband. The interfacing strips should be cut on the straight grain (parallel to the selvedge).

3. From knit fabric (if making the piping):

- a length of knit fabric 1.3 m (1 3/8 yd) long and 3.5 cm (1 3/8") wide. The fabric should be cut on the cross grain (perpendicular to the selvedge).



Press the seam flat.



Clip into the curved sections of the seam allowances, stopping 2 mm short of the stitching line.



Press the seam allowances open.