

FROM THE FOUNDER OF THE #VIKISEWS BRAND



Back in 2016, when I was working on my first set of sewing instructions, I was trying to write them in such a way that even a complete beginner could easily understand and use them to create their very first garment. These instructions laid the foundation for the Vikisews brand, its vision and its mission. I wanted to create modern patterns with the utmost detailed and clear instructions.

Now, with each new collection we are constantly improving our instructions, amending them and adding more relevant details. By the time the final product reaches you, our drafters, correctors, and editors would have spent weeks perfecting every word and every photograph. If you compile a few of our instructions together, you will get a sewing manual that will assist you in sewing all kinds of garments at any difficulty level.

And I would be very happy if these instructions helped you to turn your hobby into a lifelong passion... Enjoy the process! Create your ultimate dream wardrobe! Wear your garments proudly for years to come!

If you have any questions, please contact us at info@vikisews.com — we are always there to help.



SIMBA PATTERN DESCRIPTION

Simba is a semi-fitted, footed onesie. The round neckline and long raglan sleeves are finished with binding. The onesie fastens with a zipper along the left-front sleeve and side seams and features a gusset at the crotch. There is elastic stitched above the feet at the back for a better fit.



IMPORTANT!

The contents of this pattern are copyright protected and belong exclusively to Vikisews. You may use Vikisews patterns for personal use. It is prohibited to share Vikisews patterns and instructions with third parties, as well as to publish patterns and instructions online for public access. **Non-compliance with the mentioned rules is a violation of the US copyright law and may result in civil liability and criminal prosecution.**

You may use Vikisews patterns for commercial use, to sew custom-made garments and/or create fashion collections, on the condition that the patterns are solely used in a manufacturing setting and are not further shared with individuals.

TOTAL EASE ALLOWANCE

	Chest ease	Waistline ease	Hipline ease	Upper arm ease
cm	7.2–8	3.8–8.8	3.5–5.1	8
inches	2 7/8–3 1/8	1 1/2–3 1/2	1 3/8–2	3 1/8

GARMENT LENGTH, SLEEVE LENGTH

Height, cm	Center back length including neck binding (estimated), cm	Sleeve length including shoulder width, neck binding and sleeve binding, cm
50	40–43.2	22.6–23
56	48–48.2	25.5–26
62	53–53.2	28.3–28.9
68	57.8–58	31–31.5
74	62.8–63	34–34.5
80	67.6–67.8	36.5–36.9
86	72.6–72.8	39.4–40

Height, in	Center back length including neck binding (estimated), in	Sleeve length including shoulder width, neck binding and sleeve binding, in
19.75	15 3/4–17	8 7/8–9
22	18 7/8–19	10–10 1/4
24.5	20 7/8–21	11 1/8–11 3/8
26.75	22 3/4–22 7/8	12 1/4–12 3/8
29.25	24 3/4	13 3/8–13 5/8
31.5	26 5/8–26 3/4	14 3/8–14 1/2
33.75	28 5/8	15 1/2–15 3/4

IMPORTANT! When purchasing fabric, please account for shrinkage and buy 5% more than required.

2. Stitched bias-cut fusible stay tape, 1 cm (3/8") wide, for all sizes in all heights — 1 m (1 1/8 yd)
3. Elastic, 0.7 cm (1/4") wide — 14–21 cm (5 1/2–8 1/4"), depending on the size. The exact elastic length is specified on the pattern pieces.
4. One coil zipper No.3, 40 cm (15 3/4") long, for all sizes in all heights
5. Matching thread — 5 spools (1 spool for the sewing machine + 4 spools for the overlocker)

TOOLS AND EQUIPMENT

- sewing machine for construction
- one-sided foot for the sewing machine
- overlocker for finishing raw edges. This may be replaced with a stretch overlock stitch or a zigzag stitch on the sewing machine (overlock or zigzag stitch width 2–3 mm, stitch length 2.5 mm)
- coverstitch or coverlock machine for finishing the neckline and sleeve hems. If you don't have a coverstitch machine, you can replace it with a twin needle on any regular sewing machine that can do a zigzag stitch.

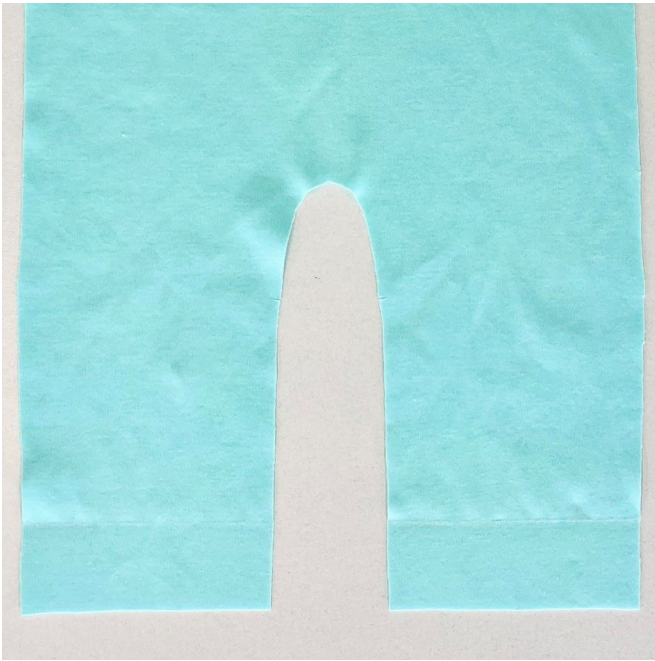
IMPORTANT! We recommend using specialty needles when working with knit fabrics (for example, *STRETCH*, *SUPER STRETCH*, *JERSEY*, etc.). These are ballpoint needles, so they part the threads of the fabric you are stitching rather than pierce them.

PATTERN PIECES LIST

1. From main fabric:

- front — cut 1
- back — cut 1
- sleeve — cut 2
- placket — cut 2
- gusset — cut 1
- foot top — cut 2
- sole — cut 2
- neck binding — cut 1
- sleeve binding — cut 2

IMPORTANT! Don't forget to transfer all pattern markings and notches onto the fabric.



Using tailor's chalk, transfer the elastic stitching lines from the pattern piece to the wrong side of the back piece.



Press and steam the elastic to prevent its shrinkage in the finished garment. Cut the elastic pieces of the required length. The exact elastic length is indicated on the pattern piece.

Pin the elastic along the marked lines.



Working from the wrong side, stitch the elastic on the sewing machine. Backstitch at the beginning and end of the seam.