

# FROM THE FOUNDER OF THE #VIKISEWS BRAND

---

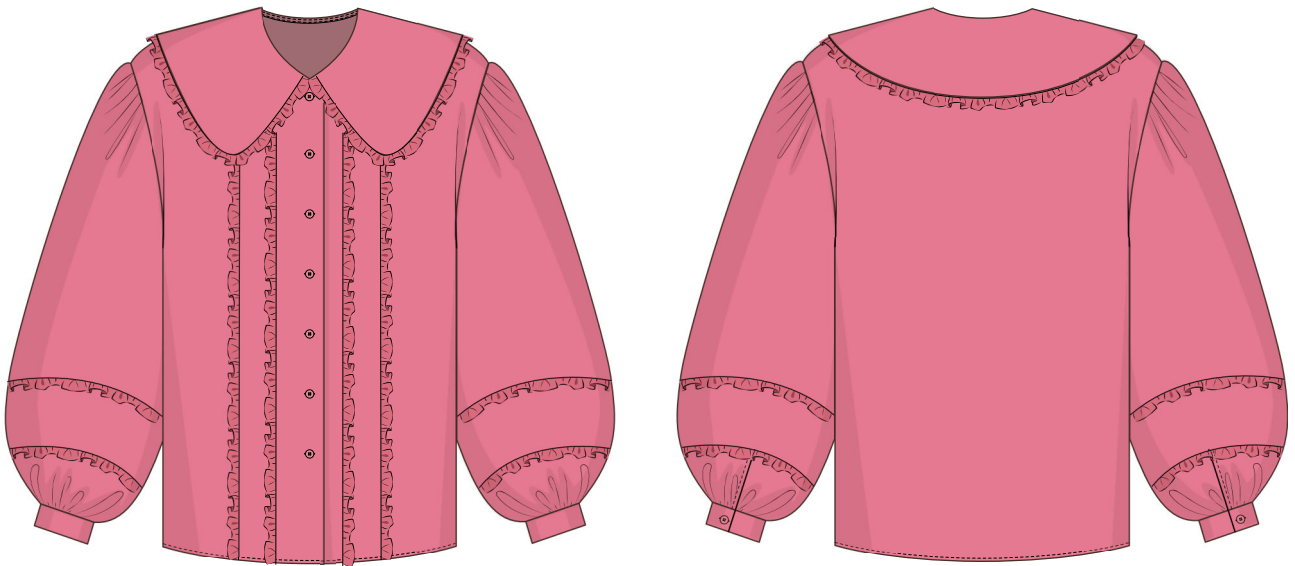


Back in 2016, when I was working on my first set of sewing instructions, I was trying to write them in such a way that even a complete beginner could easily understand and use them to create their very first garment. These instructions laid the foundation for the Vikisews brand, its vision and its mission. I wanted to create modern patterns with the utmost detailed and clear instructions.

Now, with each new collection we are constantly improving our instructions, amending them and adding more relevant details. By the time the final product reaches you, our drafters, correctors, and editors would have spent weeks perfecting every word and every photograph. If you compile a few of our instructions together, you will get a sewing manual that will assist you in sewing all kinds of garments at any difficulty level.

And I would be very happy if these instructions helped you to turn your hobby into a lifelong passion... Enjoy the process! Create your ultimate dream wardrobe! Wear your garments proudly for years to come!

If you have any questions, please contact us at [info@vikisews.com](mailto:info@vikisews.com) — we are always there to help.



## ASALIA PATTERN DESCRIPTION

---

Asalia is a straight-cut, loose-fitting blouse. The front features princess seams trimmed with ruffles. The blouse has a round neckline and a ruffled Peter Pan collar. The set-in bishop sleeves are voluminous, long, and divided into three sections. They are gathered at the sleeve cap and hem and trimmed with ruffles. The sleeves are finished with cuffs that close with buttons and buttonholes. The blouse has a center front button and buttonhole closure. Asalia is hip-length.



## IMPORTANT!

---

The contents of this pattern are copyright protected and belong exclusively to Vikisews. You may use Vikisews patterns for personal use. It is prohibited to share Vikisews patterns and instructions with third parties, as well as to publish patterns and instructions online for public access. **Non-compliance with the mentioned rules is a violation of the US copyright law and may result in civil liability and criminal prosecution.**

You may use Vikisews patterns for commercial use, to sew custom-made garments and/or create fashion collections, on the condition that the patterns are solely used in a manufacturing setting and are not further shared with individuals.

# TOTAL EASE ALLOWANCE

	Bust ease	Waistline ease	Hipline ease	Upper arm ease
cm	22–21.3	41.4–41	14.3–14.2	34
inches	8 5/8–8 3/8	16 1/4–16 1/8	5 5/8	13 3/8

# GARMENT LENGTH, SLEEVE LENGTH

Height, cm	Back length, cm	Sleeve length including shoulder and cuff width, cm
1 (154–160)	62.6–63.5	76.3–78.2
2 (162–168)	64.6–65.4	78.2–80.1
3 (170–176)	66.6–67.4	80.2–82
4 (178–184)	68.6–69.4	82.1–84.1
Height, ft	Back length, in	Sleeve length including shoulder and cuff width, in
1 (5'1"–5'3")	24 5/8–25	30–30 3/4
2 (5'4"–5'6")	25 3/8–25 3/4	30 3/4–31 1/2
3 (5'7"–5'9")	26 1/4–26 1/2	31 5/8–32 1/4
4 (5'10"–6'1")	27–27 3/8	32 3/8–33 1/8

# SUGGESTED FABRIC

To sew this blouse, choose blouse and dress-weight fabrics with the following properties:

- lightweight, pliable, soft, without stretch, semi-sheer or opaque
- the fiber content can include natural fibers (cotton), artificial fibers (viscose), blends (cotton + silk, cotton + viscose), and synthetics (polyester)
- the following fabrics are recommended: batiste, shirting.

**Attention!** We do not recommend stretchy knit materials or structured fabrics (sateen, organza).

The blouse in the photos is made of batiste. The fabric is lightweight, sheer, smooth, and without stretch. The fiber content is 76% tencel and 24% polyester. The fabric weight is 55 g/m<sup>2</sup>. The interfacing weight is 30 g/m<sup>2</sup>.

# PATTERN PIECES LIST

---

## 1. From main fabric:

- middle front – cut 2
- side front – cut 2
- top placket – cut 2
- bottom placket – cut 2
- back – cut 1 on fold
- top sleeve – cut 2
- middle sleeve – cut 2
- bottom front sleeve – cut 2
- bottom back sleeve – cut 2
- undercollar – cut 1 on fold
- upper collar – cut 1 on fold
- cuff – cut 2
- collar ruffle – cut 2
- top placket ruffle – cut 2
- middle front ruffle – cut 2
- top sleeve ruffle – cut 2
- middle sleeve ruffle – cut 2
- neck binding – cut 1.

***IMPORTANT!** Don't forget to transfer all pattern markings and notches onto the fabric.*

## 2. From interfacing:

- cuff – cut 2
- bottom placket – cut 2
- upper collar – cut 1 on fold.

# SEAM ALLOWANCES

---

All pattern pieces include seam allowances as follows:

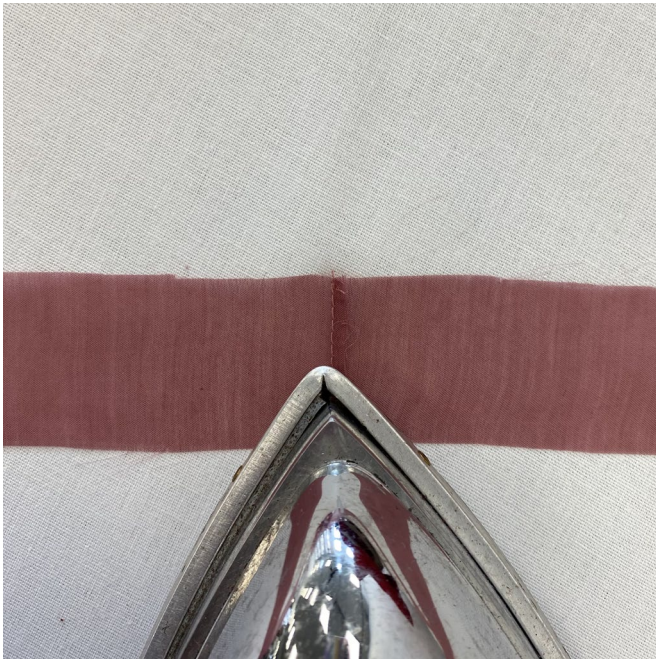
- garment hem allowance – 2 cm (3/4")
- sleeve slit seam allowance – 2 cm (3/4")
- all other edges – 1 cm (3/8").

Take this into account when laying out pattern pieces on the fabric.





Trim the seam allowances down to 3 mm (1/8").



Press the seam allowances open first and then press them to one side.



Fold the assembled piece along the seam and press it from the wrong side, positioning the seam on the very edge.