

FROM THE FOUNDER OF THE #VIKISEWS BRAND

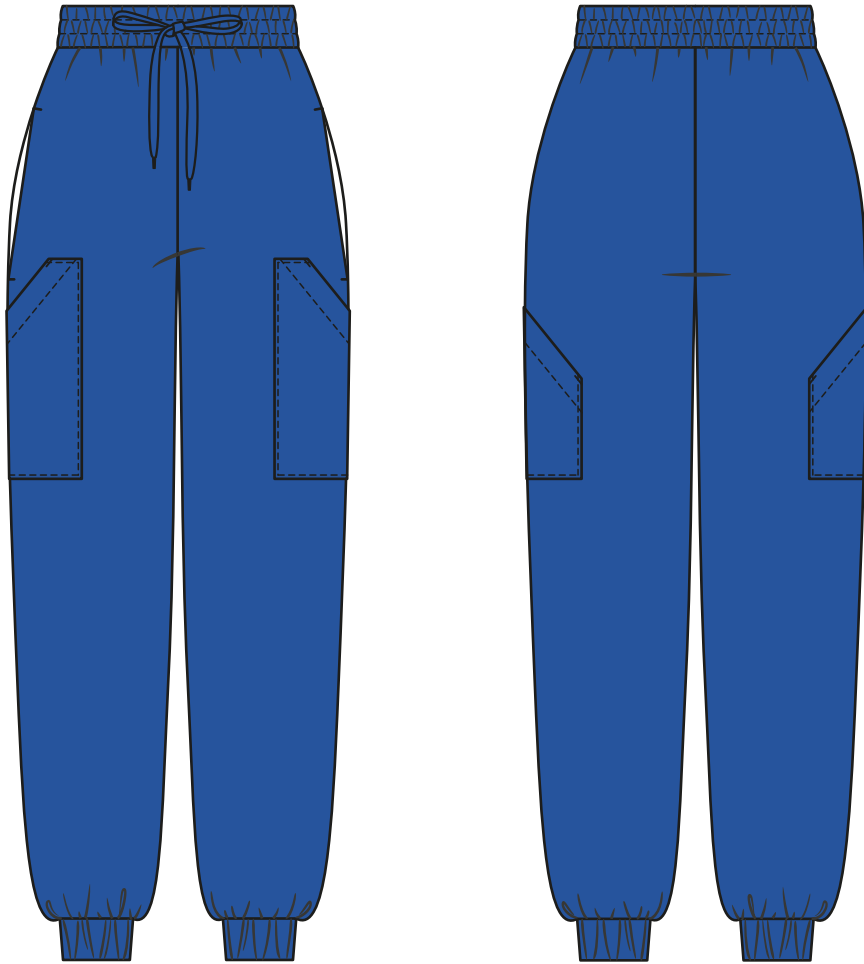


Back in 2016, when I was working on my first set of sewing instructions, I was trying to write them in such a way that even a complete beginner could easily understand and use them to create their very first garment. These instructions laid the foundation for the Vikisews brand, its vision and its mission. I wanted to create modern patterns with the utmost detailed and clear instructions.

Now, with each new collection we are constantly improving our instructions, amending them and adding more relevant details. By the time the final product reaches you, our drafters, correctors, and editors would have spent weeks perfecting every word and every photograph. If you compile a few of our instructions together, you will get a sewing manual that will assist you in sewing all kinds of garments at any difficulty level.

And I would be very happy if these instructions helped you to turn your hobby into a lifelong passion... Enjoy the process! Create your ultimate dream wardrobe! Wear your garments proudly for years to come!

If you have any questions, please contact us at info@vikisews.com – we are always there to help.



JOANNE PATTERN DESCRIPTION

Joanne is a pair of loose-fitting, straight-cut pants. The upper edge of the waistband sits at the natural waistline. The waistband features two rows of topstitching which form a casing threaded with wide elastic and a twill tape drawstring. The pants have a pair of side seam pockets and a pair of patch pockets. The rectangular patch pockets have slant openings. The pants have elasticated hems and are ankle-length.



IMPORTANT!

The contents of this pattern are copyright protected and belong exclusively to Vikisews. You may use Vikisews patterns for personal use. It is prohibited to share Vikisews patterns and instructions with third parties, as well as to publish patterns and instructions online for public access. **Non-compliance with the mentioned rules is a violation of the US copyright law and may result in civil liability and criminal prosecution.**

You may use Vikisews patterns for commercial use, to sew custom-made garments and/or create fashion collections, on the condition that the patterns are solely used in a manufacturing setting and are not further shared with individuals.

TOTAL EASE ALLOWANCE

	Waistline ease	Hipline ease
cm	15.6–15.8	14.3–15.5
inches	6 1/8–6 1/4	5 5/8–6 1/8

GARMENT LENGTH

Height, cm	Side seam length including waistband, cm	Height, ft	Side seam length including waistband, in
1 (154–160)	100.2–101.6	1 (5'1"–5'3")	39 1/2–40
2 (162–168)	104.5–105.9	2 (5'4"–5'6")	41 1/8–41 3/4
3 (170–176)	108.8–110.2	3 (5'7"–5'9")	42 7/8–43 3/8
4 (178–184)	113.1–114.5	4 (5'10"–6'1")	44 1/2–45 1/8

SUGGESTED FABRIC

To sew these pants, choose knit fabrics with the following properties:

- medium weight, soft, breathable, stretch or low-stretch
- the fiber content can include natural fibers (wool, cotton), artificial fibers (viscose), blends (wool + polyester, cotton + polyester, cotton + elastane, etc.), and synthetics (polyester, polyester + elastane)
- the following fabrics are recommended: sweatshirt fleece, thick French terry, jersey

Attention! We do not recommend lightweight sheer fabrics (chiffon, organza, stretch lace).

The garment in the photo is made of sweatshirt fleece. The fabric is medium weight, soft, and low-stretch. The fiber content is a blend of viscose, polyester, and elastane.

PATTERN PIECES LIST

1. From main fabric:

- front leg — cut 2
- back leg — cut 2
- pocket bag — cut 4
- patch pocket — cut 2
- waistband – cut 1 on fold

***IMPORTANT!** Don't forget to transfer all pattern markings and notches onto the fabric.*

2. From interfacing:

- patch pocket seam allowances

To interface the seam allowances, cut strips of interfacing that are 3.5 cm (1 3/8") wide and as long as the the corresponding edge (measure on the pattern). The interfacing strips should be cut on the straight grain (parallel to the selvedge).

- seam allowances along the side pocket openings

You may also use premade straight-grain fusible stay tape, 1 cm (3/8") wide.

- buttonhole placement on the waistband

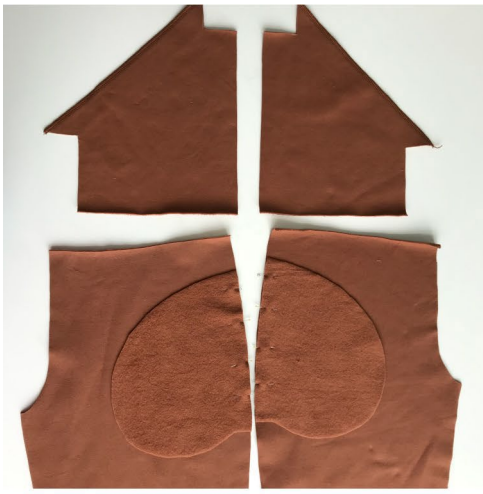
Interface with a rectangular piece of interfacing. Measure the size of the interfaced area on the pattern.

SEAM ALLOWANCES

All pattern pieces include seam allowances as follows:

- grown-on patch pocket facing — 3.5 cm (1 3/8")
- hem allowance — 6 cm (2 3/8")
- all other edges — 1 cm (3/8")

Take this into account when laying out pattern pieces on the fabric.



With the right side facing up, overlock the slant edge of the grown-on patch pocket facing. Press and steam the seam.

Place the pocket bag and front leg pieces right sides together, align the side edges and match the notches. Pin. Hand-baste if necessary. Baste at 1.2–1.5 cm (1/2–5/8") from the edge to prevent the basting thread from getting caught in the stitching. Machine-stitch between the pocket opening notches. Backstitch at the beginning and end. Press flat.



Fold the grown-on facing to the right side of the patch pocket along the foldline. Align the edges and machine-stitch the facing to the upper and side edges of the patch pocket, backstitching at the beginning and end. Stitch at 8 mm (just under 3/8") from the edge. The turning of the bulky fabric will take up 2 mm from the seam allowance. Press flat.

The photo shows the wrong and right sides of the front leg pieces with the pocket bags attached.



Trim the corners as shown in the photo.



Trim the seam allowances as shown in the photo. Trim the facing's seam allowance down to 2 mm.