

FROM THE FOUNDER OF THE #VIKISEWS BRAND

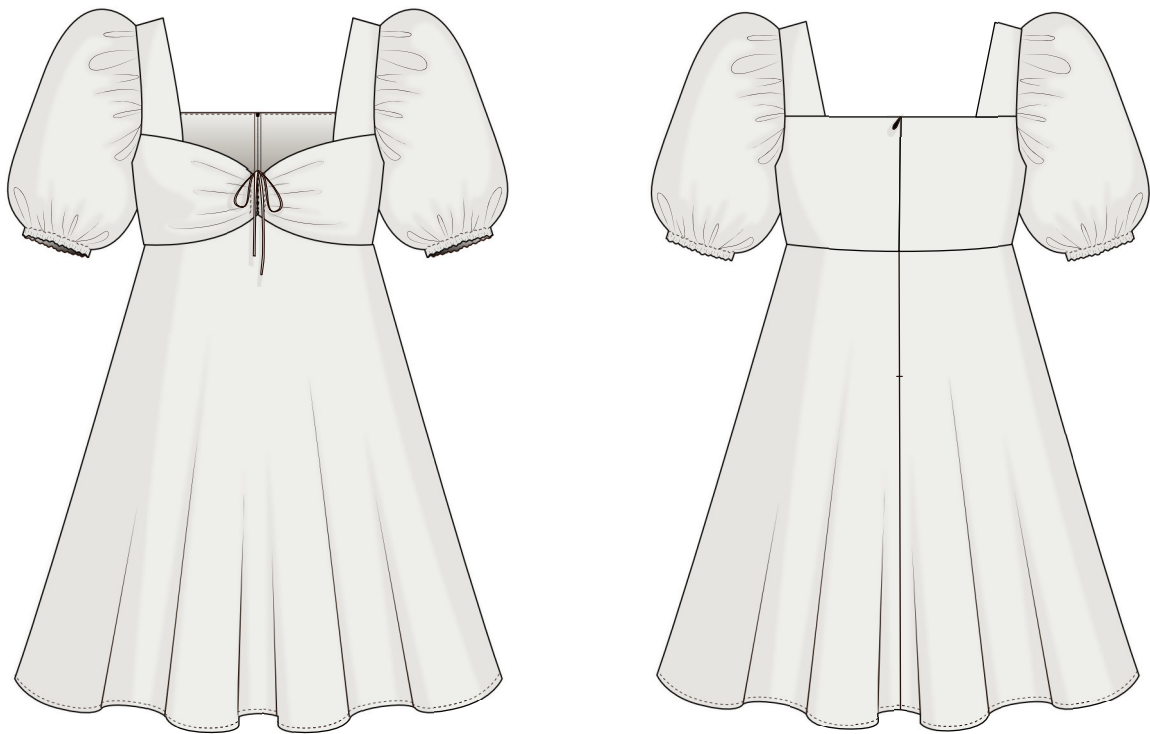


Back in 2016, when I was working on my first set of sewing instructions, I was trying to write them in such a way that even a complete beginner could easily understand and use them to create their very first garment. These instructions laid the foundation for the Vikisews brand, its vision and its mission. I wanted to create modern patterns with the utmost detailed and clear instructions.

Now, with each new collection we are constantly improving our instructions, amending them and adding more relevant details. By the time the final product reaches you, our drafters, correctors, and editors would have spent weeks perfecting every word and every photograph. If you compile a few of our instructions together, you will get a sewing manual that will assist you in sewing all kinds of garments at any difficulty level.

And I would be very happy if these instructions helped you to turn your hobby into a lifelong passion... Enjoy the process! Create your ultimate dream wardrobe! Wear your garments proudly for years to come!

If you have any questions, please contact us at info@vikisews.com — we are always there to help.



HOLLY PATTERN DESCRIPTION

Holly is a semi-fitted, A-line dress with an empire waist seam. The bodice center front is gathered with ties threaded through casings. The bodice is lined. The dress features a low shaped neckline at the front and a low square neckline at the back. The skirt is cut on the bias. The dress has short, set-in, puff sleeves. The sleeves are gathered at the cap and have an elasticated hem. The dress closes with an invisible zipper in the center back seam. Holly is mid-hip length.



IMPORTANT!

The contents of this pattern are copyright protected and belong exclusively to Vikisews. You may use Vikisews patterns for personal use. It is prohibited to share Vikisews patterns and instructions with third parties, as well as to publish patterns and instructions online for public access. **Non-compliance with the mentioned rules is a violation of the US copyright law and may result in civil liability and criminal prosecution.**

You may use Vikisews patterns for commercial use, to sew custom-made garments and/or create fashion collections, on the condition that the patterns are solely used in a manufacturing setting and are not further shared with individuals.

TOTAL EASE ALLOWANCE

	Bust ease	Waistline ease	Hipline ease	Upper arm ease
cm	6.5–7.4	32.8–33	52.5–50.4	28.5–35.8
inches	2 1/2–2 7/8	12 7/8–13	20 5/8–19 7/8	11 1/4–14 1/8

GARMENT LENGTH, SLEEVE LENGTH

Height, cm	Back length from waist down (estimated), cm	Sleeve length, cm
1 (154–160)	44	33.2–35.4
2 (162–168)	47	34.2–36.4
3 (170–176)	50	35.2–37.4
4 (178–184)	53	36.2–38.4

Height, ft	Back length from waist down (estimated), in	Sleeve length, in
1 (5'1"–5'3")	17 3/8	13 1/8–13 7/8
2 (5'4"–5'6")	18 1/2	13 1/2–14 3/8
3 (5'7"–5'9")	19 5/8	13 7/8–14 3/4
4 (5'10"–6'1")	20 7/8	14 1/4–15 1/8

SUGGESTED FABRIC

To sew this dress, choose dress-weight fabrics with the following properties:

- medium-weight, structured, non-stretch or low-stretch
- the fiber content can include natural fibers (cotton, linen), artificial fibers (viscose), blends (cotton + elastane, cotton + polyester, polyester + viscose, etc.), and synthetics (polyester, polyester + elastane)
- the following fabrics are recommended: cotton, sateen, poplin, linen, broderie anglaise, lightweight denim.

Attention! We do not recommend stretchy knit fabrics. The fabric should be structured.

The garment in the photos is made of linen. The fabric is medium-weight, without stretch. The fiber content is 100% linen.

2. Bias-cut fusible stay tape – 2.5 m (2 3/4 yd).
3. Straight-grain fusible stay tape – 0.7 m (3/4 yd).
4. Lightweight woven interfacing, 140 cm (55") wide, for all sizes and heights – 25 cm (10").
5. Elastic, for all heights:

Size	34	36	38	40	42	44	46	48	50	52
cm	44.2	51	53.8	56.6	59.4	62.2	65	67.2	70.6	73.2
inches	17 3/8	20 1/8	21 1/8	22 1/4	23 3/8	24 1/2	25 5/8	26 1/2	27 3/4	28 7/8

6. One invisible zipper, 40 cm (15 3/4") long, for all sizes and heights.
7. Matching thread – 5 spools (1 spool for the sewing machine + 4 spools for the overlocker).

TOOLS AND EQUIPMENT

- sewing machine for construction
- overlocker for finishing raw edges. It can be replaced with a stretch overlock stitch or a zigzag stitch on the sewing machine (overlock or zigzag stitch width 2–3 mm, stitch length 2.5 mm)
- edgestitch foot for the sewing machine (optional)
- loop turner
- invisible zipper foot for the sewing machine
- buttonhole foot for the sewing machine.

PATTERN PIECES LIST

1. From main fabric:

- front bodice overlay – cut 2
- top front bodice panel – cut 2
- bottom front bodice panel – cut 2
- front skirt – cut 1
- back bodice – cut 2 + 2 for the lining
- back skirt – cut 2
- back strap – cut 4
- front strap – cut 4
- sleeve – cut 2
- tie – cut 2.

2. From interfacing:

- back strap – cut 2
- front strap – cut 2.

IMPORTANT! The inner back bodice pieces referred to below as 'lining' are cut from the main fabric!
IMPORTANT! Don't forget to transfer all pattern markings and notches onto the fabric.



Overlock the center front edges. Press the seams flat.



Place the two front bodice overlay pieces right sides together, align the center front edges, pin, baste, and stitch on the sewing machine. Stitch at 1.5 cm (5/8") from the edge. Backstitch at the beginning and end of the seam.



Press the seam flat.