

FROM THE FOUNDER OF THE #VIKISEWS BRAND

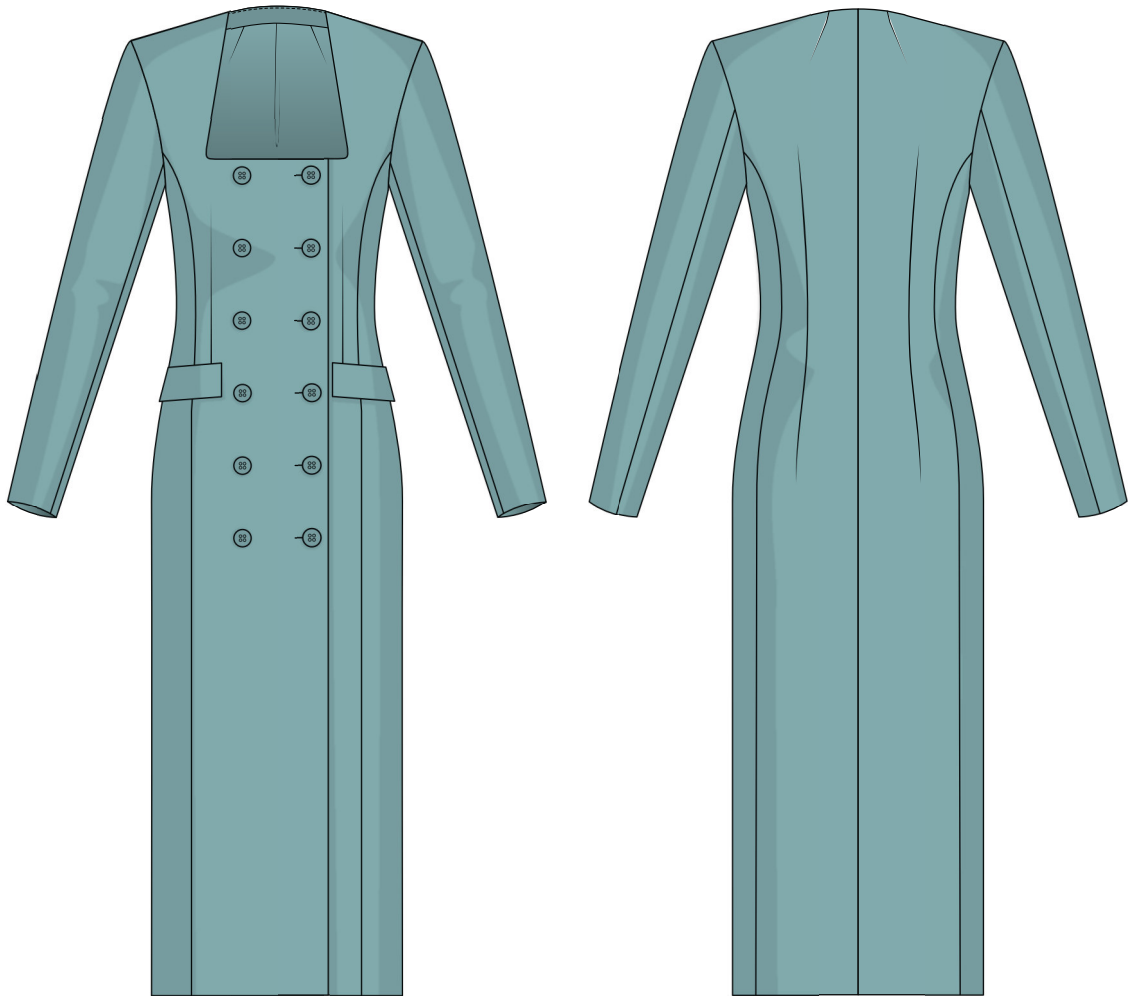


Back in 2016, when I was working on my first set of sewing instructions, I was trying to write them in such a way that even a complete beginner could easily understand and use them to create their very first garment. These instructions laid the foundation for the Vikisews brand, its vision and its mission. I wanted to create modern patterns with the utmost detailed and clear instructions.

Now, with each new collection we are constantly improving our instructions, amending them and adding more relevant details. By the time the final product reaches you, our drafters, correctors, and editors would have spent weeks perfecting every word and every photograph. If you compile a few of our instructions together, you will get a sewing manual that will assist you in sewing all kinds of garments at any difficulty level.

And I would be very happy if these instructions helped you to turn your hobby into a lifelong passion... Enjoy the process! Create your ultimate dream wardrobe! Wear your garments proudly for years to come!

If you have any questions, please contact us at info@vikisews.com — we are always there to help.



JENNIFER PATTERN DESCRIPTION

Jennifer is a semi-fitted dress with an accentuated waist. Both front and back feature vertical princess seams and waist darts. The dress has sewn-on flaps on the front and a center back seam. The deep square neckline blends into a grown-on collar stand shaped with darts at the back. The long set-in sleeves are made up of two pieces. The dress closes with a double-breasted button front closure. There is a free-hanging lining on the front and back. Jennifer is midi length.



IMPORTANT!

The contents of this pattern are copyright protected and belong exclusively to Vikisews. You may use Vikisews patterns for personal use. It is prohibited to share Vikisews patterns and instructions with third parties, as well as to publish patterns and instructions online for public access. **Non-compliance with the mentioned rules is a violation of the US copyright law and may result in civil liability and criminal prosecution.**

You may use Vikisews patterns for commercial use, to sew custom-made garments and/or create fashion collections, on the condition that the patterns are solely used in a manufacturing setting and are not further shared with individuals.

TOTAL EASE ALLOWANCE

| | Bust ease | Waistline ease | Hipline ease | Upper arm ease |
|--------|-------------|----------------|--------------|----------------|
| cm | 5.9–8.3 | 5.8–8.5 | 5.5–6.9 | 5–5.1 |
| inches | 2 3/8–3 1/4 | 2 1/4–3 3/8 | 2 1/8–2 3/4 | 2 |

GARMENT LENGTH, SLEEVE LENGTH

| Height, cm | Back length (estimated), cm | Sleeve length, cm | Height, ft | Back length (estimated), in | Sleeve length, in |
|-------------|--------------------------------|-------------------|----------------|--------------------------------|-------------------|
| 1 (154–160) | 116.6–118.4 | 57.8–59.5 | 1 (5'1"–5'3") | 45 7/8–46 5/8 | 22 3/4–23 3/8 |
| 2 (162–168) | 120.6–122.4 | 59.7–61.5 | 2 (5'4"–5'6") | 47 1/2–48 1/4 | 23 1/2–24 1/4 |
| 3 (170–176) | 124.6–126.4 | 61.7–63.5 | 3 (5'7"–5'9") | 49–49 3/4 | 24 1/4–25 |
| 4 (178–184) | 128.6–130.4 | 63.8–65.6 | 4 (5'10"–6'1") | 50 5/8–51 3/8 | 25 1/8–25 7/8 |

SUGGESTED FABRIC

To sew this dress, choose dress-weight and suiting fabrics with the following properties:

- medium weight, malleable, breathable, soft, non-stretch or with very little stretch, opaque
- the fiber content can include natural fibers (wool, silk, cotton), artificial fibers (viscose), blends (wool + silk, wool + polyester, polyester + viscose, etc.), and synthetics (polyester, polyester + elastane)
- the following fabrics are recommended: malleable suiting fabrics, dress-weight wool, gabardine, wool crepe.

Attention! We do not recommend stretchy knit fabrics and lightweight sheer fabrics (chiffon, organza, stretch lace).

For the lining, choose lining fabrics made of artificial fibers (viscose), blends (viscose + elastane, viscose + polyester), or synthetics (polyester, polyester + elastane).

The dress in the photo is made of suiting. The fabric is medium weight, soft, low-stretch and malleable. The fiber content is a blend of viscose and polyester.

The lining's fiber content is a blend of viscose and polyester.

TOOLS AND EQUIPMENT

- sewing machine for construction
- overlocker for finishing raw edges. This may be replaced with a stretch overlock stitch or a zigzag stitch on the sewing machine (overlock or zigzag stitch width 2–3 mm, stitch length 2.5 mm)
- buttonhole foot for the sewing machine
- stitch-in-the-ditch foot for the sewing machine (optional)

PATTERN PIECES LIST

1. From main fabric:

- front — cut 2
- side front — cut 2
- flap — cut 2
- back — cut 2
- side back — cut 2
- top sleeve — cut 2
- bottom sleeve — cut 2
- front facing — cut 2
- back neck facing — cut 1 on fold

2. From lining fabric:

- front lining — cut 2
- back lining — cut 2

3. From interfacing:

- front facing — cut 2
- back neck facing — cut 1 on fold
- top flap — cut 2

IMPORTANT! Don't forget to transfer all pattern markings and notches onto the fabric.

Additionally, cut two interfacing strips, 2 cm (3/4") wide, to interface the flap seam allowances. The interfacing strips should be cut on the straight grain (parallel to the selvedge).

SEAM ALLOWANCES

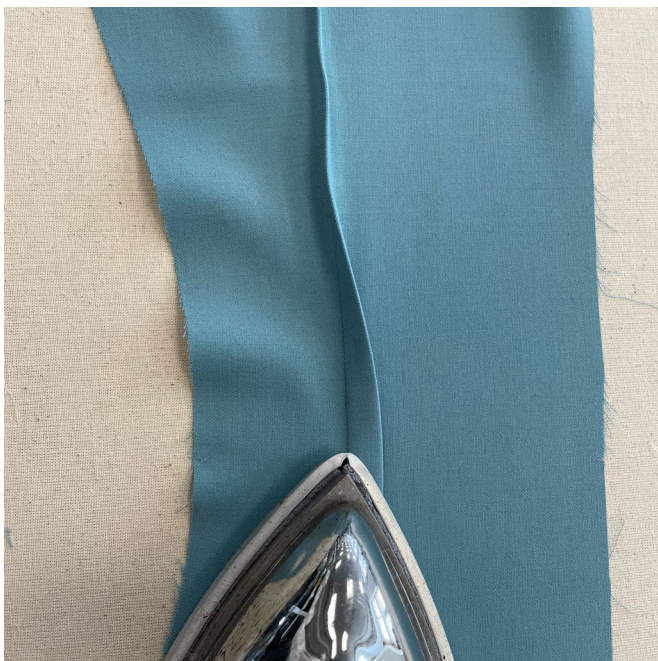
All pattern pieces include seam allowances as follows:

- garment hem allowance — 4 cm (1 5/8")
- sleeve hem allowance — 3 cm (1 1/8")
- lining hem allowance — 2 cm (3/4")
- all other edges — 1 cm (3/8")

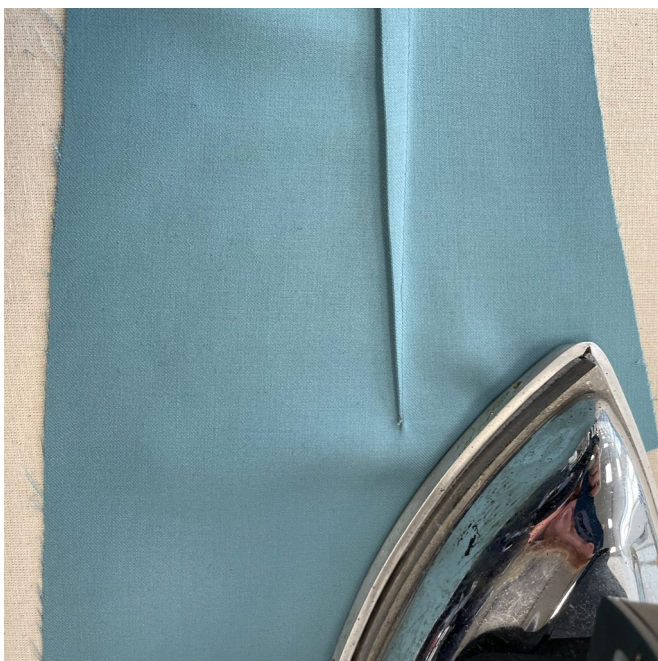
Take this into account when laying out pattern pieces on the fabric.



Stretch the waist dart seam allowance a little by pulling it slightly when pressing. This is to ensure that the waist darts obtain a smooth contour in the finished garment, without causing any tension and misshaping the back.



Press the darts towards the center back.



Press and steam to shrink out the ease at the dart points.