

# FROM THE FOUNDER OF THE #VIKISEWS BRAND

---

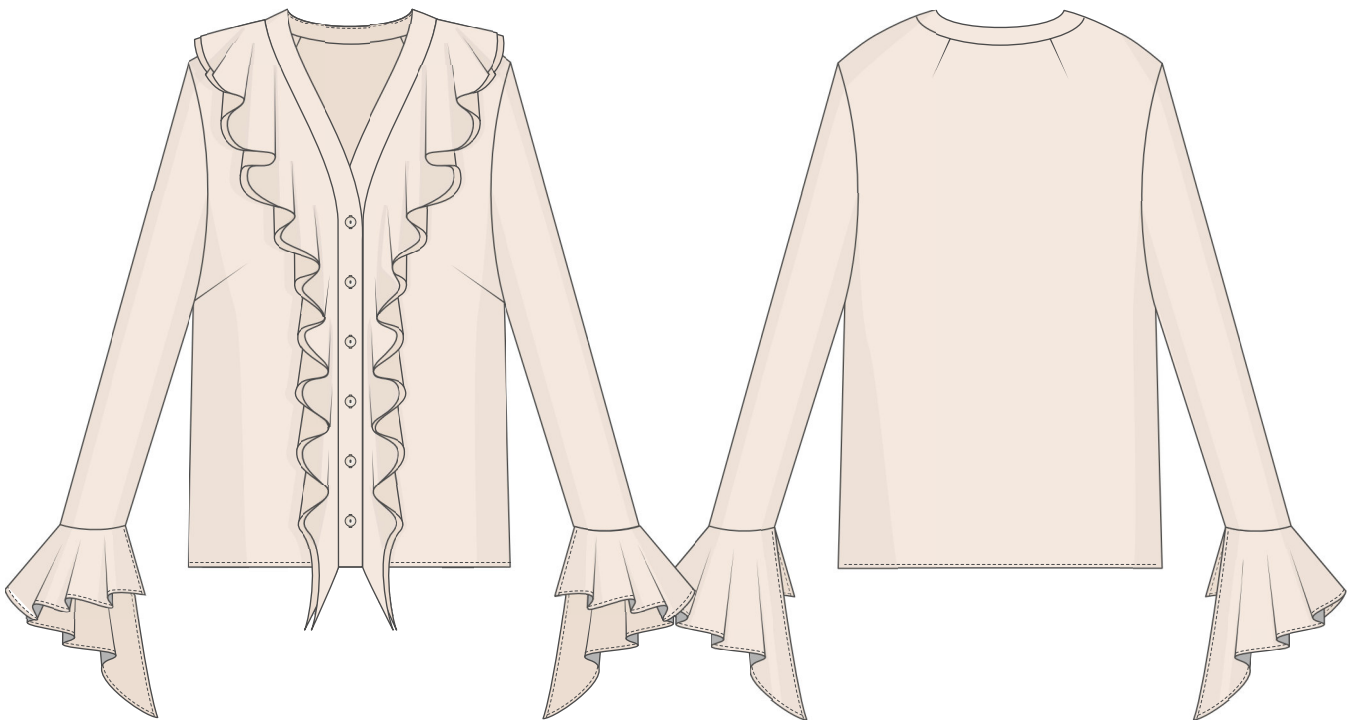


Back in 2016, when I was working on my first set of sewing instructions, I was trying to write them in such a way that even a complete beginner could easily understand and use them to create their very first garment. These instructions laid the foundation for the Vikisews brand, its vision and its mission. I wanted to create modern patterns with the utmost detailed and clear instructions.

Now, with each new collection we are constantly improving our instructions, amending them and adding more relevant details. By the time the final product reaches you, our drafters, correctors, and editors would have spent weeks perfecting every word and every photograph. If you compile a few of our instructions together, you will get a sewing manual that will assist you in sewing all kinds of garments at any difficulty level.

And I would be very happy if these instructions helped you to turn your hobby into a lifelong passion... Enjoy the process! Create your ultimate dream wardrobe! Wear your garments proudly for years to come!

If you have any questions, please contact us at [info@vikisews.com](mailto:info@vikisews.com) — we are always there to help.



## MALLORY PATTERN DESCRIPTION

---

Mallory is a semi-fitted blouse with a straight cut. It is shaped with front bust darts and back shoulder darts. The deep V-neckline is trimmed with flounces falling from the shoulder seam down to the bottom of the garment. The blouse closes with an applied center front button placket. The long, drop-shoulder, set-in sleeves are finished with asymmetric flounces. Mallory is below-hip length.



## IMPORTANT!

---

The contents of this pattern are copyright protected and belong exclusively to Vikisews. You may use Vikisews patterns for personal use. It is prohibited to share Vikisews patterns and instructions with third parties, as well as to publish patterns and instructions online for public access. **Non-compliance with the mentioned rules is a violation of the US copyright law and may result in civil liability and criminal prosecution.**

You may use Vikisews patterns for commercial use, to sew custom-made garments and/or create fashion collections, on the condition that the patterns are solely used in a manufacturing setting and are not further shared with individuals.

# TOTAL EASE ALLOWANCE

	Bust ease	Waistline ease	Hipline ease	Upper arm ease
cm	15.8–18	35.8–37.3	10–10.2	8.5–7.4
inches	6 1/4–7 1/8	14 1/8–14 5/8	3 7/8–4	3 3/8–2 7/8

# GARMENT LENGTH, SLEEVE LENGTH

Height, cm	Back length, cm	Sleeve length including shoulder and flounce width (estimated), cm
1 (154–160)	60.2–62	73.4–76.5
2 (162–168)	62.2–64	75.4–78.5
3 (170–176)	64.2–66	77.4–80.5
4 (178–184)	66.2–68	79.4–82.5
Height, ft	Back length, in	Sleeve length including shoulder and flounce width (estimated), in
1 (5'1"–5'3")	23 3/4–24 3/8	28 7/8–30 1/8
2 (5'4"–5'6")	24 1/2–25 1/4	29 5/8–30 7/8
3 (5'7"–5'9")	25 1/4–26	30 1/2–31 3/4
4 (5'10"–6'1")	26 1/8–26 3/4	31 1/4–32 1/2

# SUGGESTED FABRIC

To sew this blouse, choose blouse and dress-weight fabrics with the following properties:

- lightweight, pliable, soft, non-stretch or low-stretch, sheer, semi-sheer or opaque
- the fiber content can include natural fibers (silk, cotton), artificial fibers (viscose), blends (cotton + silk, cotton + viscose, silk + viscose, etc.), and synthetics (polyester)
- the following fabrics are recommended: satin, dress-weight viscose, chiffon, crepe de chine, natural or synthetic lightweight silk.

**Attention!** We do not recommend stretchy knit materials or structured fabrics (sateen, organza).

The blouse in the photos is made of crinkle chiffon. The fabric is lightweight, sheer, pliable, soft, with a little stretch. The fiber content is 100% tencel. The fabric weight is 150 g/m2. The interfacing weight is 30 g/m2.

# TOOLS AND EQUIPMENT

---

- sewing machine for construction
- buttonhole foot for the sewing machine
- stitch-in-the-ditch foot for the sewing machine (optional)
- press tool for button covering.

# PATTERN PIECES LIST

---

## 1. From main fabric:

- front – cut 2
- back – cut 1 on fold
- sleeve – cut 2
- top front bodice flounce – cut 2
- bottom front bodice flounce – cut 2
- sleeve flounce – cut 2
- front placket – cut 4
- back neckband – cut 2.

## 2. From interfacing:

- front placket – cut 4
- back neckband – cut 2.

**IMPORTANT!** Don't forget to transfer all pattern markings and notches onto the fabric.

# SEAM ALLOWANCES

---

All pattern pieces include 1 cm (3/8") seam allowances.  
Take this into account when laying out pattern pieces on the fabric.





Match up the dart legs on the wrong side of the back piece. Pin. Machine-stitch the darts, backstitching at the neckline edge only.



Tie the thread tails at the dart point into knots and hide them inside the dart bulk using a needle.



Press the darts flat.

Press and steam the dart, shrink out the fullness at the dart point on a tailor's ham. Press the darts toward the center back.

**Important!** To prevent imprints when pressing, slip a piece of thick paper between the seam allowance and the main piece.