

FROM THE FOUNDER OF THE #VIKISEWS BRAND



Back in 2016, when I was working on my first set of sewing instructions, I was trying to write them in such a way that even a complete beginner could easily understand and use them to create their very first garment. These instructions laid the foundation for the Vikisews brand, its vision and its mission. I wanted to create modern patterns with the utmost detailed and clear instructions.

Now, with each new collection we are constantly improving our instructions, amending them and adding more relevant details. By the time the final product reaches you, our drafters, correctors, and editors would have spent weeks perfecting every word and every photograph. If you compile a few of our instructions together, you will get a sewing manual that will assist you in sewing all kinds of garments at any difficulty level.

And I would be very happy if these instructions helped you to turn your hobby into a lifelong passion... Enjoy the process! Create your ultimate dream wardrobe! Wear your garments proudly for years to come!

If you have any questions, please contact us at info@vikisews.com — we are always there to help.



KATNISS PATTERN DESCRIPTION

Katniss is a close-fitting dress. The shaping at the back is achieved with waist darts. Top front pieces feature spaghetti straps tied at the neck. The dress has a low neckline and short raglan sleeves gathered with elastic at the top and bottom. The casings at the front and back top edges are threaded with elastic for gathering. The draping at the front is achieved with ties in the princess seam casings. The dress closes with a hook and eye and an invisible zipper in the center back seam. The hem is finished with a flounce. Katniss is mid-hip length.



IMPORTANT!

The contents of this pattern are copyright protected and belong exclusively to Vikisews. You may use Vikisews patterns for personal use. It is prohibited to share Vikisews patterns and instructions with third parties, as well as to publish patterns and instructions online for public access. **Non-compliance with the mentioned rules is a violation of the US copyright law and may result in civil liability and criminal prosecution.**

You may use Vikisews patterns for commercial use, to sew custom-made garments and/or create fashion collections, on the condition that the patterns are solely used in a manufacturing setting and are not further shared with individuals.

TOTAL EASE ALLOWANCE

	Bust ease	Waistline ease	Hipline ease	Upper arm ease
cm	3.4–4.5	3.4–4.9	4.3–5.3	47.8–64.8
inches	1 3/8–1 3/4	1 3/8–1 7/8	1 3/4–2 1/8	18 7/8–25 1/2

GARMENT LENGTH, SLEEVE LENGTH

Height, cm	Garment length from waist down, cm	Sleeve length, cm
1 (154–160)	44	17–16.9
2 (162–168)	47	18.1–18
3 (170–176)	50	19–18.9
4 (178–184)	53	20.1–19.9
Height, ft	Garment length from waist down, in	Sleeve length, in
1 (5'1"–5'3")	17 3/8	6 3/4–6 5/8
2 (5'4"–5'6")	18 1/2	7 1/8
3 (5'7"–5'9")	19 5/8	7 1/2
4 (5'10"–6'1")	20 7/8	7 7/8

SUGGESTED FABRIC

To sew this dress, choose dress-weight fabrics with the following properties:

- medium weight, with good drape, non-stretch or with very little stretch, opaque
- the fiber content can include natural fibers (cotton, linen), artificial fibers (viscose), blends (cotton + elastane, linen + silk, cotton + viscose, etc.)
- the following fabrics are recommended: muslin, dress-weight viscose, linen, poplin, sateen, silk, cotton shirting, dress-weight denim, challis

Attention! We do not recommend stretchy knit fabrics and lightweight sheer fabrics (chiffon, organza, stretch lace).

The dress in the photo is made of muslin. The fabric is thin, soft, breathable, semi-sheer and with good drape. The fiber content is 100% cotton.

PATTERN PIECES LIST

1. From main fabric:

- top front — cut 2
- center front — cut 1
- side front — cut 2
- back — cut 2
- sleeve — cut 2
- front hem flounce — cut 1
- back hem flounce — cut 1
- tie strap — cut 2
- casing tie — cut 4

2. From interfacing:

- buttonhole areas — cut 4

IMPORTANT! Don't forget to transfer all pattern markings and notches onto the fabric.

SEAM ALLOWANCES

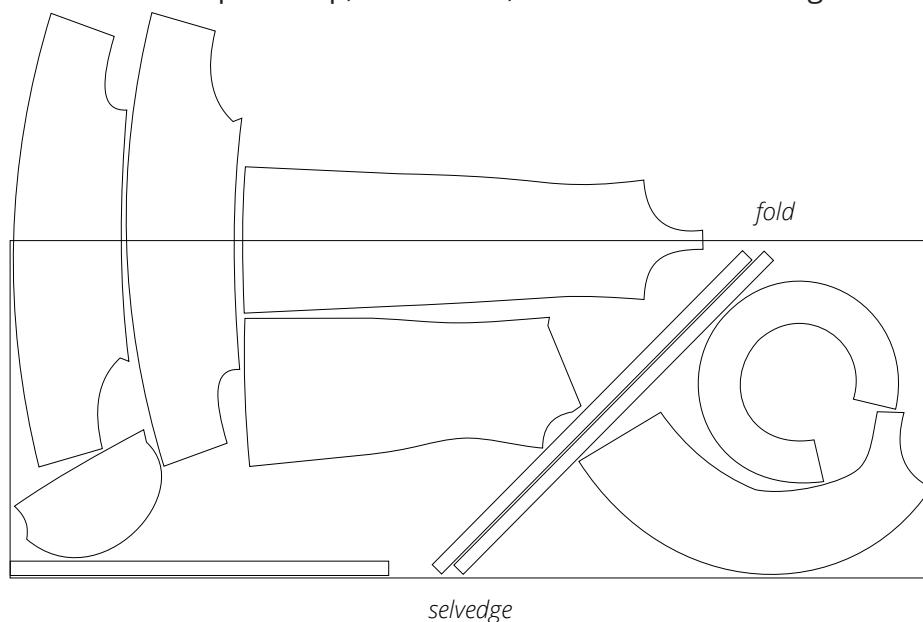
All pattern pieces include seam allowances as follows:

- front and back top edges, sleeve top and bottom edges, princess seam edges of the center front and side front pieces, center back edges — 2.2 cm (7/8")
- all other edges — 1 cm (3/8")

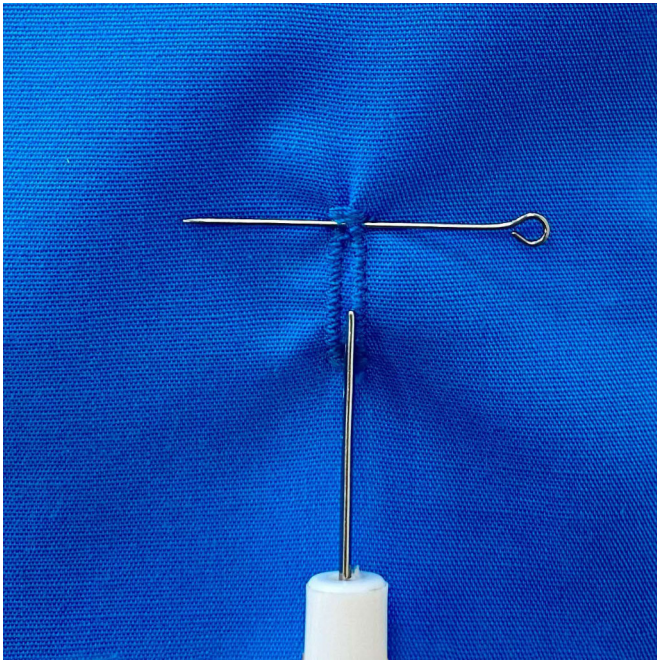
Take this into account when laying out pattern pieces on the fabric.

CUTTING LAYOUT

Main fabric, 140–145 cm (55–57") wide, with a directional print/nap, cut on fold, for sizes 34–42 in heights 1–3; main fabric, 145 cm (57") wide, with a directional print/nap, cut on fold, for sizes 34–42 in height 4



Attention! Cut the center front and sleeve pieces on a single layer. Cut only one front hem flounce piece. Cut only one back hem flounce piece under the front hem flounce piece.



Mark buttonholes on the center front and side front pieces according to the pattern. Working on the right side, machine-stitch the buttonholes using a buttonhole foot for the sewing machine.

Using a seam ripper, cut the buttonholes open carefully.



Place the center front and side front pieces right sides together. Pin, baste and machine-stitch the long edges at 2.2 cm (7/8") from the edge. Backstitch at the beginning and end.

