

FROM THE FOUNDER OF THE #VIKISEWS BRAND

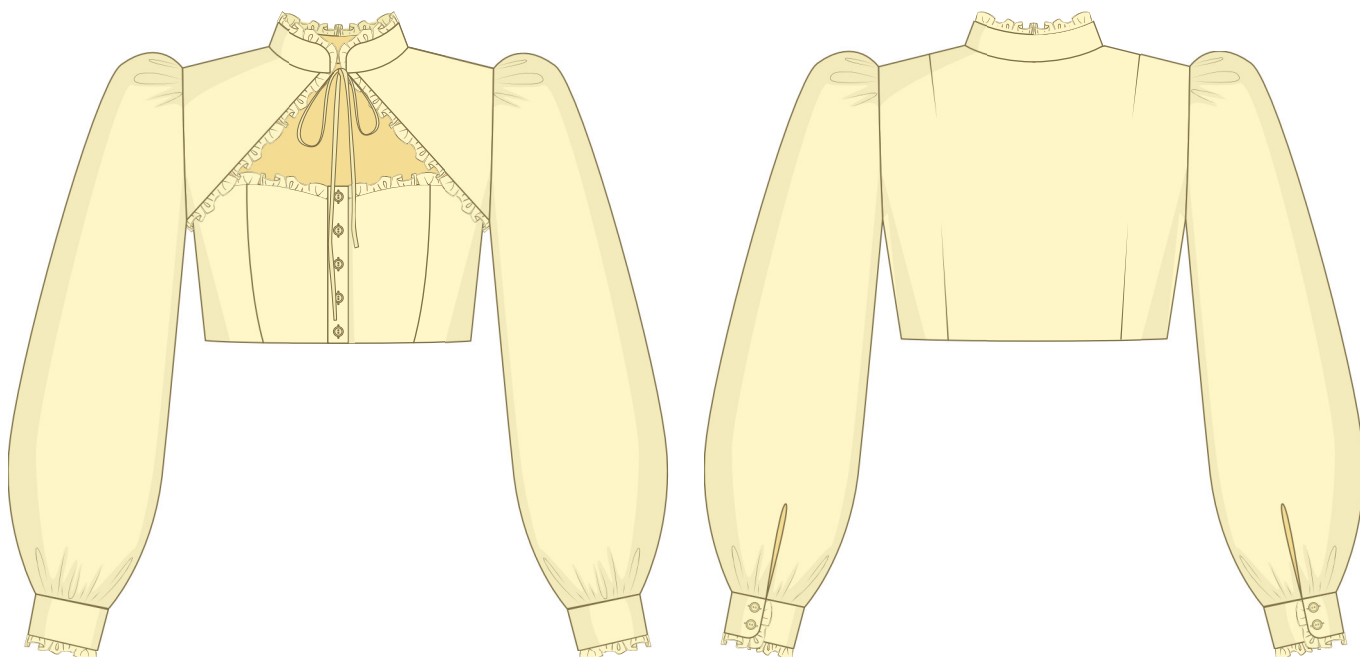


Back in 2016, when I was working on my first set of sewing instructions, I was trying to write them in such a way that even a complete beginner could easily understand and use them to create their very first garment. These instructions laid the foundation for the Vikisews brand, its vision and its mission. I wanted to create modern patterns with the utmost detailed and clear instructions.

Now, with each new collection we are constantly improving our instructions, amending them and adding more relevant details. By the time the final product reaches you, our drafters, correctors, and editors would have spent weeks perfecting every word and every photograph. If you compile a few of our instructions together, you will get a sewing manual that will assist you in sewing all kinds of garments at any difficulty level.

And I would be very happy if these instructions helped you to turn your hobby into a lifelong passion... Enjoy the process! Create your ultimate dream wardrobe! Wear your garments proudly for years to come!

If you have any questions, please contact us at info@vikisews.com — we are always there to help.



RAYANA PATTERN DESCRIPTION

Rayana is a close-fitting blouse. The front features princess seams and shaped yokes. The back is fitted with waist darts. The Queen Anne neckline edge, upper edge of the stand collar and sleeve cuffs are finished with ruffles. The collar closes with ties at the front. The long, voluminous, set-in sleeves are gathered at the sleeve cap and bottom edge. The sleeve hems are finished with cuffs, each fastening with two buttons and buttonholes. The blouse has a center front button placket. Rayana is above-waist length.



IMPORTANT!

The contents of this pattern are copyright protected and belong exclusively to Vikisews. You may use Vikisews patterns for personal use. It is prohibited to share Vikisews patterns and instructions with third parties, as well as to publish patterns and instructions online for public access. **Non-compliance with the mentioned rules is a violation of the US copyright law and may result in civil liability and criminal prosecution.**

You may use Vikisews patterns for commercial use, to sew custom-made garments and/or create fashion collections, on the condition that the patterns are solely used in a manufacturing setting and are not further shared with individuals.

TOTAL EASE ALLOWANCE

| | Bust ease | Upper arm ease |
|--------|-----------|----------------|
| cm | 2.3–4.7 | 26–26.6 |
| inches | 7/8–1 7/8 | 10 1/4–10 1/2 |

GARMENT LENGTH, SLEEVE LENGTH

| Height, cm | Back length, cm | Sleeve length including cuff and ruffle, cm |
|-------------|-----------------|---|
| 1 (154–160) | 33.2–36.8 | 66.8–69 |
| 2 (162–168) | 34.2–37.8 | 68.5–70.7 |
| 3 (170–176) | 35.2–38.8 | 70.4–72.6 |
| 4 (178–184) | 36.1–39.8 | 72.1–74.4 |

| Height, ft | Back length, in | Sleeve length including cuff and ruffle, in |
|----------------|-----------------|---|
| 1 (5'1"–5'3") | 13 1/8–14 1/2 | 26 1/4–27 1/8 |
| 2 (5'4"–5'6") | 13 1/2–14 7/8 | 27–27 7/8 |
| 3 (5'7"–5'9") | 13 7/8–15 1/4 | 27 3/4–28 5/8 |
| 4 (5'10"–6'1") | 14 1/4–15 5/8 | 28 3/8–29 1/4 |

SUGGESTED FABRIC

To sew this blouse, choose blouse and dress-weight fabrics with the following properties:

- medium weight, soft, non-stretch
- the fiber content can include natural fibers (silk, cotton), artificial fibers (viscose), blends (cotton + viscose, cotton + silk, etc.), and synthetics (polyester)
- the following fabrics are recommended: cotton, poplin, shirting.

Attention! We do not recommend using heavyweight, structured fabrics and thin, fluid fabrics with elastane.

The blouse in the photo is made of cotton. The fabric is medium weight and non-stretch. The fiber content is 100% cotton. The fabric weight is 90 g/m².

IMPORTANT! When purchasing fabric, please account for shrinkage and buy 5% more than required.

3. Nine buttons, 1 cm (3/8") in diameter
4. Matching thread — 4 spools (1 spool for the sewing machine + 3 spools for the overlocker)

TOOLS AND EQUIPMENT

- sewing machine for construction
- overlocker for finishing raw edges. This may be replaced with a stretch overlock stitch or a zigzag stitch on the sewing machine (overlock or zigzag stitch width 2–3 mm, stitch length 2.5 mm)
- buttonhole foot for the sewing machine
- stitch-in-the-ditch foot for the sewing machine (optional).

PATTERN PIECES LIST

1. From main fabric:

- center front — cut 4
- side front — cut 4
- back — cut 2 on fold
- sleeve — cut 2
- front yoke — cut 4
- cuff — cut 4
- sleeve placket binding — cut 2
- placket — cut 2
- collar — cut 2 on fold
- yoke ruffle — cut 2
- front ruffle — cut 2
- cuff ruffle — cut 2
- collar ruffle — cut 1 on fold
- collar tie — cut 2.

2. From interfacing:

- cuff — cut 4
- placket — cut 2
- collar — cut 2 on fold.

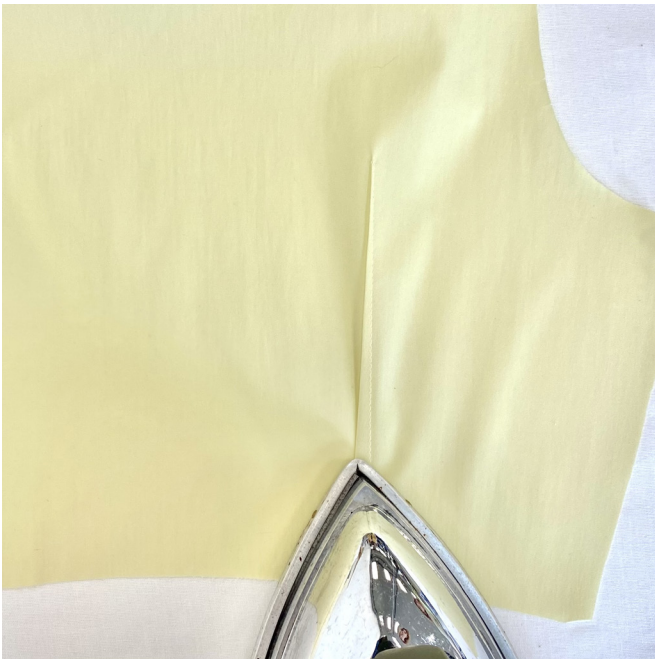
IMPORTANT! Don't forget to transfer all pattern markings and notches onto the fabric.

SEAM ALLOWANCES

All pattern pieces include 1 cm (3/8") seam allowances.
Take this into account when laying out pattern pieces on the fabric.



Tie the thread tails at the dart point into a knot and hide them inside the dart bulk using a needle.



Press the dart seam flat.

Press the darts toward the center back.

Press and steam the darts, shrink out the fullness at the dart points on a tailor's ham.



Place the inner and outer center front and side front pieces in pairs, right sides together, aligning the princess seam edges. Match the notches and pin. Stitch on the sewing machine, backstitching at the beginning and end of the seam.

Press the seams flat