

# FROM THE FOUNDER OF THE #VIKISEWS BRAND

---



Back in 2016, when I was working on my first set of sewing instructions, I was trying to write them in such a way that even a complete beginner could easily understand and use them to create their very first garment. These instructions laid the foundation for the Vikisews brand, its vision and its mission. I wanted to create modern patterns with the utmost detailed and clear instructions.

Now, with each new collection we are constantly improving our instructions, amending them and adding more relevant details. By the time the final product reaches you, our drafters, correctors, and editors would have spent weeks perfecting every word and every photograph. If you compile a few of our instructions together, you will get a sewing manual that will assist you in sewing all kinds of garments at any difficulty level.

And I would be very happy if these instructions helped you to turn your hobby into a lifelong passion... Enjoy the process! Create your ultimate dream wardrobe! Wear your garments proudly for years to come!

If you have any questions, please contact us at [info@vikisews.com](mailto:info@vikisews.com) — we are always there to help.



## DORIS PATTERN DESCRIPTION

---

Doris is a loose-fitting, lined, trapeze dress with a round neckline. The front is shaped with bust darts transferred to the side seams. The back has shoulder darts transferred to the neckline. The dress is sleeveless and has side seam pockets. The back neckline features a rouleau loop and button closure. The hem is finished with a facing. Doris is above-knee length.



## IMPORTANT!

---

The contents of this pattern are copyright protected and belong exclusively to Vikisews. You may use Vikisews patterns for personal use. It is prohibited to share Vikisews patterns and instructions with third parties, as well as to publish patterns and instructions online for public access. **Non-compliance with the mentioned rules is a violation of the US copyright law and may result in civil liability and criminal prosecution.**

You may use Vikisews patterns for commercial use, to sew custom-made garments and/or create fashion collections, on the condition that the patterns are solely used in a manufacturing setting and are not further shared with individuals.

## TOTAL EASE ALLOWANCE

---

	Bust ease	Waistline ease	Hipline ease
cm	14.1–18.2	50.4–56.7	41.8–54.3
inches	5 1/2–7 1/8	19 7/8–22 3/8	16 1/2–21 3/8

## GARMENT LENGTH

---

Height, cm	Back length, cm	Height, ft	Back length, in
1 (154–160)	77.8–79.6	1 (5'1"–5'3")	30 5/8–31 3/8
2 (162–168)	81.8–83.6	2 (5'4"–5'6")	32 1/4–32 7/8
3 (170–176)	85.8–87.6	3 (5'7"–5'9")	33 3/4–34 1/2
4 (178–184)	89.8–91.6	4 (5'10"–6'1")	35 3/8–36 1/8

## SUGGESTED FABRIC

---

To sew this dress, choose dress-weight and suiting fabrics with the following properties:

- medium to heavyweight, structured, non-stretch or low-stretch
- the fiber content can include natural fibers (wool, silk, cotton, linen), artificial fibers (viscose), blends (wool + silk, wool + polyester, polyester + viscose, etc.), and synthetics (polyester, polyester + elastane)
- the following fabrics are recommended: sateen, poplin, linen, broderie anglaise, lightweight denim. For the lining, we recommend cotton shirting, sateen, poplin, linen, batiste.

**Attention!** We do not recommend stretchy knit fabrics. The fabric has to be structured.

The garment in the photos is made of linen. The fabric is medium-weight, without stretch. The fiber content is 30% linen, 30% tencel, 40% cotton.

The lining is made of cotton shirting (100% cotton).

# PATTERN PIECES LIST

---

## 1. From main fabric:

- front – cut 1 on fold
- back – cut 2
- pocket bag – cut 4
- front hem facing – cut 1 on fold
- back hem facing – cut 1 on fold
- rouleau loop – cut 1.

## 2. From lining fabric:

- front – cut 1 on fold
- back – cut 2.

***IMPORTANT!** Don't forget to transfer all pattern markings and notches onto the fabric.*

# SEAM ALLOWANCES

---

All pattern pieces include seam allowances as follows:

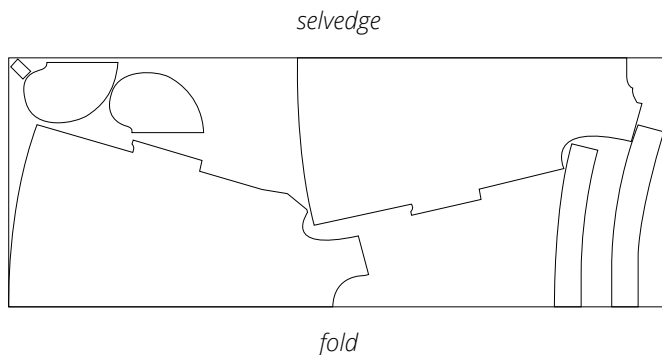
- center seam on the back and back lining pieces, hem allowance on the lining – 1.5 cm (5/8")
- all other edges – 1 cm (3/8").

Take this into account when laying out pattern pieces on the fabric.

# CUTTING LAYOUT

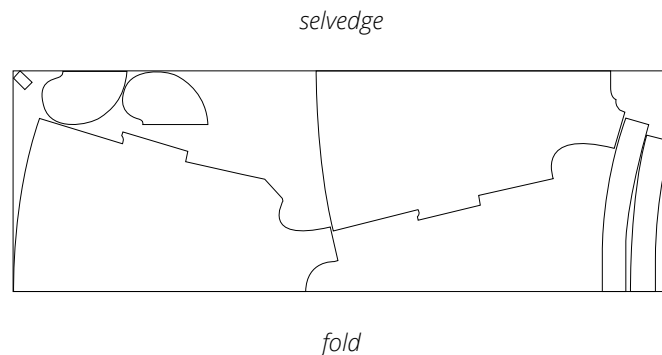
---

Main fabric, 140 cm (55") wide, cut on fold, for sizes 34–46 in all heights, with a directional print



**Important!** Cut only one rouleau loop piece.

Main fabric, 140 cm (55") wide, cut on fold, for sizes 48–52 in all heights, with a directional print



**Important!** Cut only one rouleau loop piece.



Press the darts flat.



Press the bust dart up.  
Press to shrink out the fullness at the dart point.  
Stitch the darts on the front lining the same way.



Stitch the darts on the back pieces.  
Machine-stitch, starting at the wide end and moving toward the dart point. Backstitch at the beginning of the seam only. At the tip of the dart, tie the thread ends into knots and hide them between the dart layers using a hand sewing needle.  
Press the darts flat.