

# FROM THE FOUNDER OF THE #VIKISEWS BRAND

---

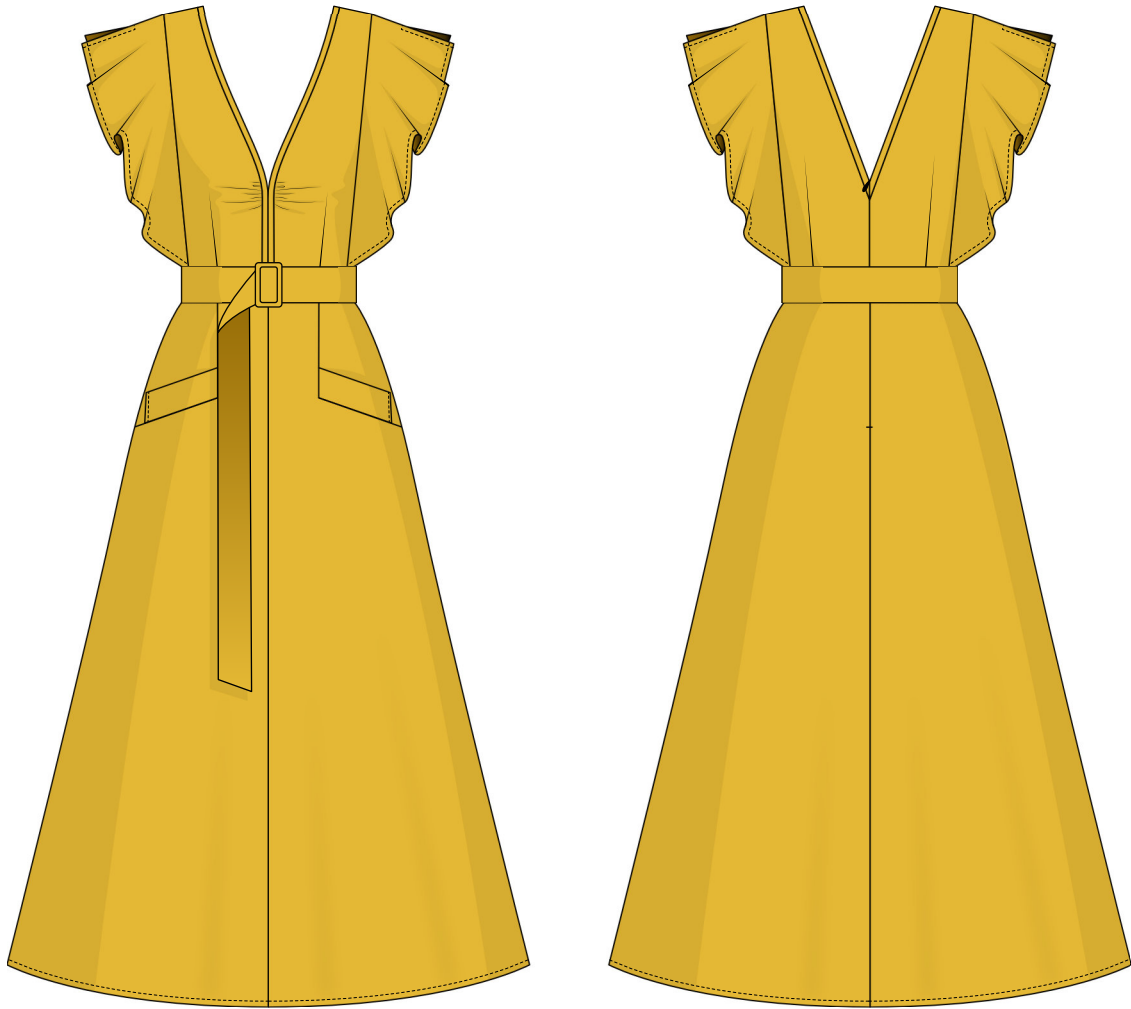


Back in 2016, when I was working on my first set of sewing instructions, I was trying to write them in such a way that even a complete beginner could easily understand and use them to create their very first garment. These instructions laid the foundation for the Vikisews brand, its vision and its mission. I wanted to create modern patterns with the utmost detailed and clear instructions.

Now, with each new collection we are constantly improving our instructions, amending them and adding more relevant details. By the time the final product reaches you, our drafters, correctors, and editors would have spent weeks perfecting every word and every photograph. If you compile a few of our instructions together, you will get a sewing manual that will assist you in sewing all kinds of garments at any difficulty level.

And I would be very happy if these instructions helped you to turn your hobby into a lifelong passion... Enjoy the process! Create your ultimate dream wardrobe! Wear your garments proudly for years to come!

If you have any questions, please contact us at [info@vikisews.com](mailto:info@vikisews.com) — we are always there to help.



## FELICIA PATTERN DESCRIPTION

---

Felicia is a close-fitting dress with an accentuated waist. It features a waist seam and a detachable belt with a fabric-covered buckle. The skirt has a gentle A-line shape. The front bodice features a center seam draped at the bust level. The bodice is fitted with shoulder princess seams both on the front and back. The front and back princess seams feature flounces with shoulder seam slits. The front skirt features a center seam and welt pockets. The dress has a deep V-neckline finished with bias binding and fastens with an invisible zipper in the center back seam. Felicia is mid-calf length.



## IMPORTANT!

---

The contents of this pattern are copyright protected and belong exclusively to Vikisews. You may use Vikisews patterns for personal use. It is prohibited to share Vikisews patterns and instructions with third parties, as well as to publish patterns and instructions online for public access. **Non-compliance with the mentioned rules is a violation of the US copyright law and may result in civil liability and criminal prosecution.**

You may use Vikisews patterns for commercial use, to sew custom-made garments and/or create fashion collections, on the condition that the patterns are solely used in a manufacturing setting and are not further shared with individuals.

# TOTAL EASE ALLOWANCE

	Bust ease	Waistline ease	Hipline ease
cm	6.8–7.1	6.8–8.3	14.5–16.4
inches	2 5/8–2 3/4	2 5/8–3 1/4	5 3/4–6 1/2

# GARMENT LENGTH

Height, cm	Garment length from waist down, cm	Height, ft	Garment length from waist down, in
1 (154–160)	77	1 (5'1"–5'3")	30 3/8
2 (162–168)	80	2 (5'4"–5'6")	31 1/2
3 (170–176)	83	3 (5'7"–5'9")	32 5/8
4 (178–184)	86	4 (5'10"–6'1")	33 7/8

# SUGGESTED FABRIC

To sew this dress, choose dress-weight fabrics with the following properties:

- medium weight, easily pressed and steamed, soft, non-stretch or with very little stretch, opaque
- the fiber content can include natural fibers (silk, cotton, linen), artificial fibers (viscose, tencel), blends (cotton + silk, linen + silk, cotton + viscose, etc.), and synthetics (polyester, polyester + elastane)
- the following fabrics are recommended: dress-weight viscose, crepe, linen, poplin, satin, silk, cotton eyelet fabric, dress-weight denim

**Attention!** We do not recommend stretchy knit fabrics and lightweight sheer fabrics (chiffon, organza, stretch lace).

The dress in the photo is made of linen with cotton. The fabric is medium weight, soft, with very little stretch and presses well. The fiber content is linen + cotton + tencel.

# PATTERN PIECES LIST

---

## 1. From main fabric:

- back bodice — cut 2
- side back bodice — cut 2
- back skirt — cut 2
- front bodice — cut 2
- side front bodice — cut 2
- front skirt — cut 2
- side front skirt — cut 2
- back bodice flounce — cut 2
- front bodice flounce — cut 2
- neckband — cut 2
- armscye binding — cut 2
- welt — cut 2
- pocket lining — cut 2
- pocket corner reinforcement — cut 2
- belt — cut 1

**IMPORTANT!** When purchasing fabric, please account for shrinkage and buy 5% more than required.

## 2. From interfacing:

- welt — cut 2
- belt — cut 1

Additionally, cut two interfacing pieces, 1.5 cm (5/8") wide and 4 cm (1 5/8") long, repeating the shape of the front skirt piece corner, to interface the pocket area.

# SEAM ALLOWANCES

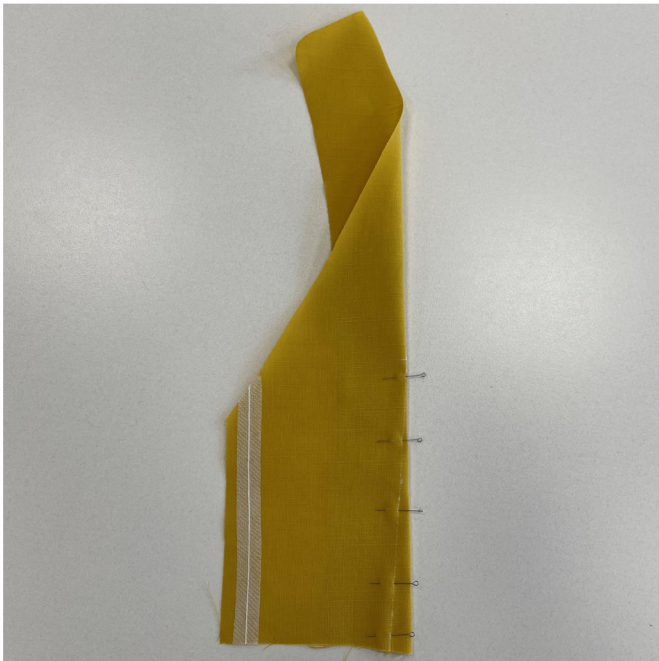
---

All pattern pieces include seam allowances as follows:

- center seam allowances on the back bodice piece — 1.5 cm (5/8")
- center seam allowances on the back skirt piece — 1.5 cm (5/8")
- all other edges — 1 cm (3/8")

Take this into account when laying out pattern pieces on the fabric.





Pin each dart on the wrong side of the front and back bodice pieces.



Machine-stitch the darts, backstitching at the bottom edge. Tie the thread tails at the dart point into a knot and hide them inside the dart bulk using a needle.



Press the dart seam flat.