

# FROM THE FOUNDER OF THE #VIKISEWS BRAND

---



Back in 2016, when I was working on my first set of sewing instructions, I was trying to write them in such a way that even a complete beginner could easily understand and use them to create their very first garment. These instructions laid the foundation for the Vikisews brand, its vision and its mission. I wanted to create modern patterns with the utmost detailed and clear instructions.

Now, with each new collection we are constantly improving our instructions, amending them and adding more relevant details. By the time the final product reaches you, our drafters, correctors, and editors would have spent weeks perfecting every word and every photograph. If you compile a few of our instructions together, you will get a sewing manual that will assist you in sewing all kinds of garments at any difficulty level.

And I would be very happy if these instructions helped you to turn your hobby into a lifelong passion... Enjoy the process! Create your ultimate dream wardrobe! Wear your garments proudly for years to come!

If you have any questions, please contact us at [info@vikisews.com](mailto:info@vikisews.com) — we are always there to help.



## AUDREY PATTERN DESCRIPTION

---

Audrey is a close-fitting dress with an accentuated waist. It features a waist seam, a square neckline, and it fastens with an invisible zipper in the center back seam. The front bodice is fitted with bust darts transferred to the side seams and waist darts. The back bodice is fitted with waist darts. The dress is finished with a free-hanging lining and is above-knee length.



## IMPORTANT!

---

The contents of this pattern are copyright protected and belong exclusively to Vikisews. You may use Vikisews patterns for personal use. It is prohibited to share Vikisews patterns and instructions with third parties, as well as to publish patterns and instructions online for public access. **Non-compliance with the mentioned rules is a violation of the US copyright law and may result in civil liability and criminal prosecution.**

You may use Vikisews patterns for commercial use, to sew custom-made garments and/or create fashion collections, on the condition that the patterns are solely used in a manufacturing setting and are not further shared with individuals.

# TOTAL EASE ALLOWANCE

---

	Bust ease	Waistline ease	Hipline ease
cm	6.8–8.9	4.5–6.5	6–8.5
inches	2 5/8–3 1/2	1 3/4–2 1/2	2 3/8–3 3/8

# GARMENT LENGTH

---

Height, cm	Back length from waist down, cm	Height, ft	Back length from waist down, in
1 (154–160)	44	1 (5'1"–5'3")	17 3/8
2 (162–168)	47	2 (5'4"–5'6")	18 1/2
3 (170–176)	50	3 (5'7"–5'9")	19 5/8
4 (178–184)	53	4 (5'10"–6'1")	20 7/8

# SUGGESTED FABRIC

---

To sew this dress, choose dress-weight and suiting fabrics with the following properties:

- medium weight, easily pressed and steamed, soft, non-stretch or with very little stretch, opaque
- the fiber content can include natural fibers (wool, cotton, linen), artificial fibers (viscose), blends (wool + silk, wool + polyester, cotton + viscose, etc.), and synthetics (polyester, polyester + elastane)
- the following fabrics are recommended: corduroy, gabardine, jacquard, suede, leather, linen, tweed, eyelet fabric

**Attention!** We do not recommend stretchy knit fabrics and lightweight sheer fabrics (chiffon, organza, stretch lace).

For the lining, we recommend artificial fibers (viscose), blends (viscose + elastane, viscose + polyester), natural fibers (cotton, cotton + elastane), and synthetics (polyester, polyester + elastane).

The dress in the photo is made of linen with cotton. The fabric is medium weight, soft, with very little stretch and presses well. The fiber content is linen + cotton + tencel.

The lining is 100% cotton.

***IMPORTANT!** When purchasing fabric, please account for shrinkage and buy 5% more than required.*

3. Stitched bias-cut fusible stay tape with stitch reinforcement, 1.5 cm (5/8") wide — 4.1 m (4 1/2 yd)
4. One invisible zipper, 50 cm (19 5/8") long, for all sizes in all heights
5. Matching thread — 5 spools (1 spool for the sewing machine + 4 spools for the overlocker)

## TOOLS AND EQUIPMENT

---

- sewing machine for construction
- overlocker for finishing raw edges. This may be replaced with a stretch overlock stitch or a zigzag stitch on the sewing machine (overlock or zigzag stitch width 2–3 mm, stitch length 2.5 mm)
- stitch-in-the-ditch foot for the sewing machine (optional)
- invisible zipper foot for the sewing machine

## PATTERN PIECES LIST

---

### 1. From main fabric:

- front bodice — cut 1 on fold
- front skirt — cut 1 on fold
- back bodice — cut 2
- back skirt — cut 2

### 2. From lining fabric:

- front bodice — cut 1 on fold
- front skirt — cut 1 on fold
- back bodice — cut 2
- back skirt — cut 2

***IMPORTANT!** Don't forget to transfer all pattern markings and notches onto the fabric.*

## SEAM ALLOWANCES

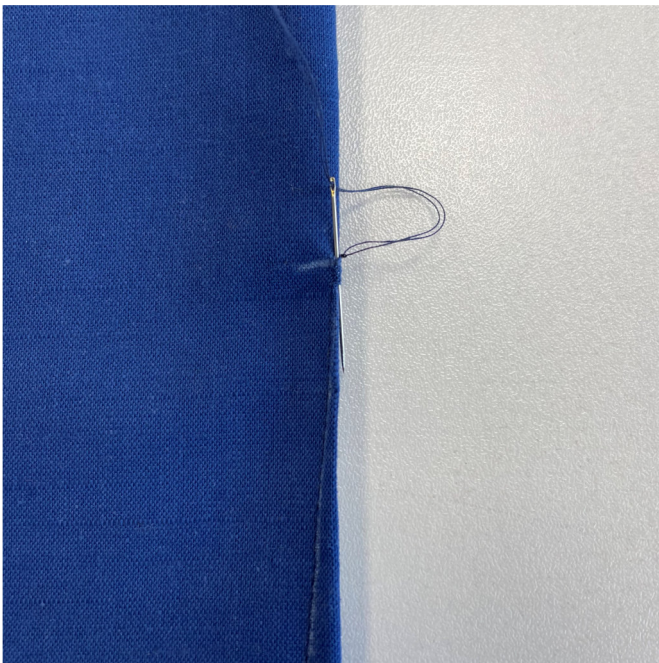
---

All pattern pieces include seam allowances as follows:

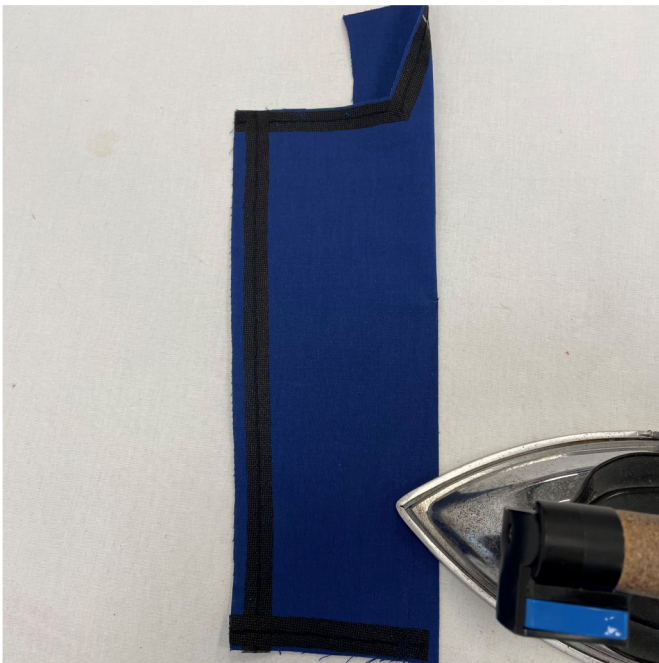
- outer garment hem allowance — 3.5 cm (1 3/8")
- lining hem allowance — 1.5 cm (5/8")
- center seam allowances on the back bodice piece — 1.5 cm (5/8")
- center seam allowances on the back skirt piece — 1.5 cm (5/8")
- all other edges — 1 cm (3/8")

Take this into account when laying out pattern pieces on the fabric.





Machine-stitch the darts, backstitching at the raw edge. Tie the thread tails at the dart point into a knot and hide them inside the dart bulk using a needle.



Press the dart seam flat.



On the front bodice piece, press the bust darts upwards, press the waist darts towards the center front.

On the back bodice pieces and the front and back skirt pieces, press the darts towards the center.

Press and steam the darts, shrink out the fullness at the dart points on a tailor's ham.