

FROM THE FOUNDER OF THE #VIKISEWS BRAND

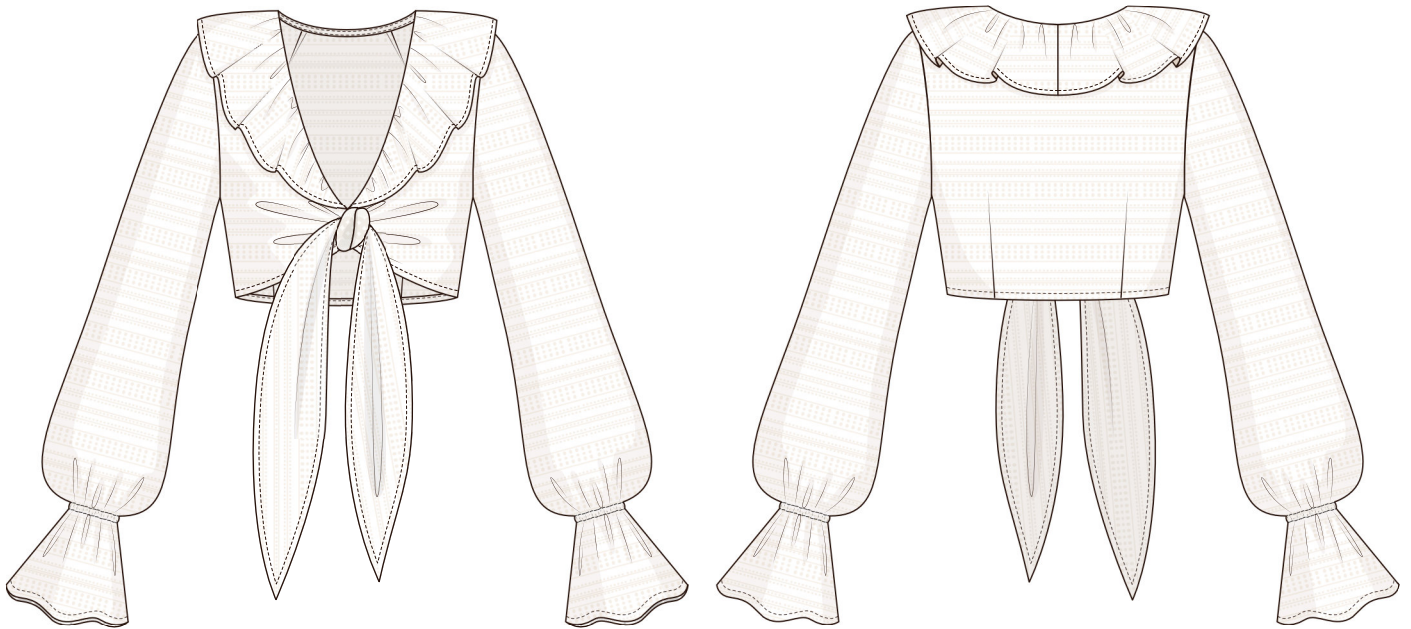


Back in 2016, when I was working on my first set of sewing instructions, I was trying to write them in such a way that even a complete beginner could easily understand and use them to create their very first garment. These instructions laid the foundation for the Vikisews brand, its vision and its mission. I wanted to create modern patterns with the utmost detailed and clear instructions.

Now, with each new collection we are constantly improving our instructions, amending them and adding more relevant details. By the time the final product reaches you, our drafters, correctors, and editors would have spent weeks perfecting every word and every photograph. If you compile a few of our instructions together, you will get a sewing manual that will assist you in sewing all kinds of garments at any difficulty level.

And I would be very happy if these instructions helped you to turn your hobby into a lifelong passion... Enjoy the process! Create your ultimate dream wardrobe! Wear your garments proudly for years to come!

If you have any questions, please contact us at info@vikisews.com — we are always there to help.



RAQUEL PATTERN DESCRIPTION

Raquel is a close-fitting blouse with an accentuated waist. The back features shoulder darts transferred to the neckline. The front has long, grown-on ties. The deep V-cut neckline features an attached flounce and is finished with bias binding. The set-in sleeves are long, flared toward the bottom. The sleeves feature elasticated casings at the wrists. The blouse is above-waist length.



IMPORTANT!

The contents of this pattern are copyright protected and belong exclusively to Vikisews. You may use Vikisews patterns for personal use. It is prohibited to share Vikisews patterns and instructions with third parties, as well as to publish patterns and instructions online for public access. **Non-compliance with the mentioned rules is a violation of the US copyright law and may result in civil liability and criminal prosecution.**

You may use Vikisews patterns for commercial use, to sew custom-made garments and/or create fashion collections, on the condition that the patterns are solely used in a manufacturing setting and are not further shared with individuals.

TOTAL EASE ALLOWANCE

	Bust ease	Waistline ease	Hipline ease
cm	10	8.1–7.9	8.1–8.2
inches	3 7/8	3 1/4–3 1/8	3 1/4

GARMENT LENGTH, SLEEVE LENGTH

Height, cm	Back length, cm	Sleeve length, cm
1 (154–160)	33.8–36.8	65.4–67.4
2 (162–168)	34.7–37.7	67.5–69.5
3 (170–176)	35.7–38.7	69.5–71.5
4 (178–184)	36.7–39.7	71.5–73.5

Height, ft	Back length, in	Sleeve length, in
1 (5'1"–5'3")	13 1/4–14 1/2	25 3/4–26 1/2
2 (5'4"–5'6")	13 5/8–14 7/8	26 5/8–27 3/8
3 (5'7"–5'9")	14–15 1/4	27 3/8–28 1/8
4 (5'10"–6'1")	14 1/2–15 5/8	28 1/8–28 7/8

SUGGESTED FABRIC

To sew this garment, choose blouse- and dress-weight fabrics with the following properties:

- medium weight, pliable, soft, non-stretch or low-stretch
- the fiber content can include natural fibers (cotton, linen), artificial fibers (viscose), blends (linen + polyester, cotton + viscose, etc.), and synthetics (polyester)
- we recommend the following fabrics: textured cotton, cotton shirting, linen.

Attention! We do not recommend using stretchy knit materials. The fabric has to be structured.

The garment in the photo is made of cotton eyelet fabric. This fabric is medium weight, non-stretch, and structured. The fiber content is 100% cotton.

PATTERN PIECES LIST

1. From main fabric:

- back — cut 1 on fold
- front — cut 2
- sleeve — cut 2
- neckline flounce — cut 1 on fold
- sleeve casing — cut 2
- neckband (binding) — cut 1

IMPORTANT! Don't forget to transfer all pattern markings and notches onto the fabric.

SEAM ALLOWANCES

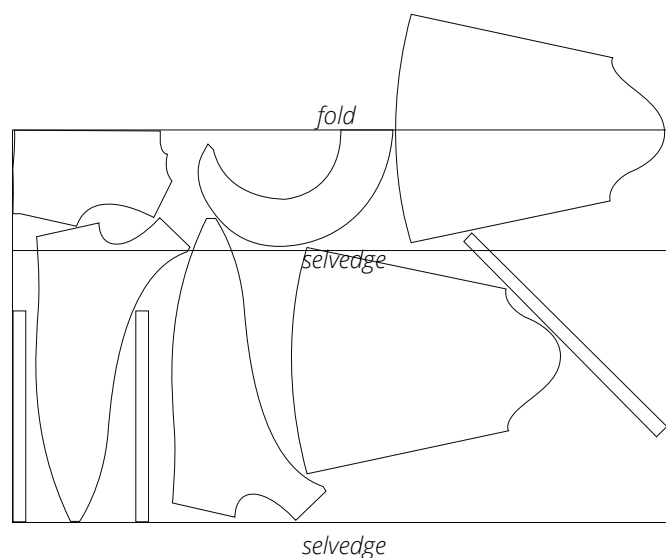
All pattern pieces include seam allowances as follows:

- back and front bottom edges, ties edges, flounce edge — 1.5 cm (5/8")
- all other edges — 1 cm (3/8")

Take this into account when laying out pattern pieces on the fabric.

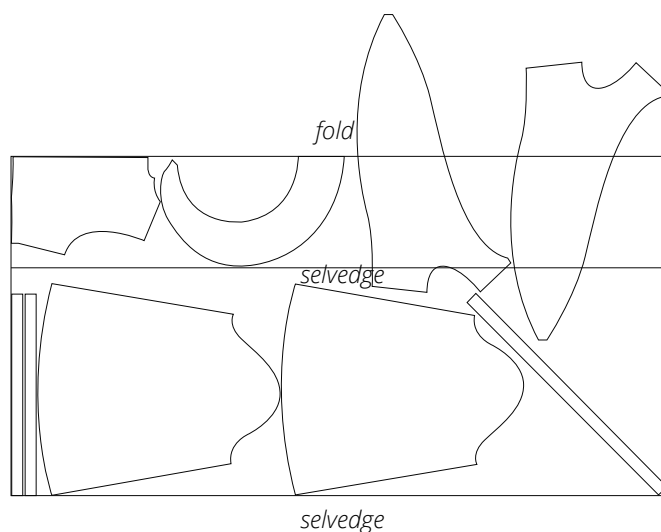
CUTTING LAYOUT

Main fabric, 140 cm (55") wide, with a directional print, cut on the lengthwise grain with one offset fold, for sizes 34–40 in all heights



Attention! The sleeve pieces are cut on a single layer out of the leftover fabric.

Main fabric, 140 cm (55") wide, with a directional print, cut on the lengthwise grain with one offset fold, for sizes 42–52 in all heights



Attention! The front pieces are cut on a single layer out of the leftover fabric.



Press the darts flat.



Press the seam allowances of the darts towards the center back.



Place the front and back pieces right sides together.

Pin the shoulder seams, baste, and stitch on the sewing machine. Backstitch at the beginning and end.