

# FROM THE FOUNDER OF THE #VIKISEWS BRAND

---

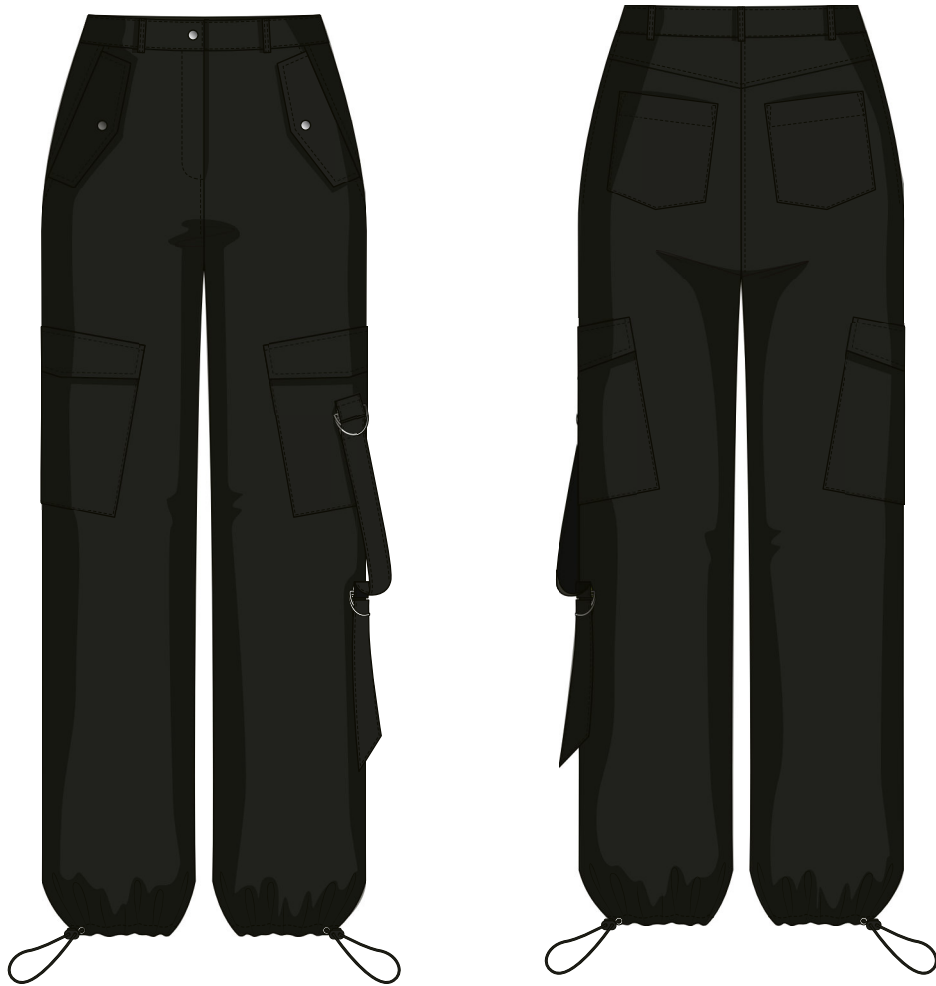


Back in 2016, when I was working on my first set of sewing instructions, I was trying to write them in such a way that even a complete beginner could easily understand and use them to create their very first garment. These instructions laid the foundation for the Vikisews brand, its vision and its mission. I wanted to create modern patterns with the utmost detailed and clear instructions.

Now, with each new collection we are constantly improving our instructions, amending them and adding more relevant details. By the time the final product reaches you, our drafters, correctors, and editors would have spent weeks perfecting every word and every photograph. If you compile a few of our instructions together, you will get a sewing manual that will assist you in sewing all kinds of garments at any difficulty level.

And I would be very happy if these instructions helped you to turn your hobby into a lifelong passion... Enjoy the process! Create your ultimate dream wardrobe! Wear your garments proudly for years to come!

If you have any questions, please contact us at [info@vikisews.com](mailto:info@vikisews.com) - we are always there to help.



## DERYLL PATTERN DESCRIPTION

---

Deryll is a pair of semi-fitted, straight-cut trousers with decorative topstitching. The waistband features topstitched belt loops. The garment has slash pockets with flaps on the front, a yoke and patch pockets on the back, and two patch pockets with flaps on the sides. The left side patch pocket features a decorative strap. The trousers close with a fly front zipper. An elastic cord with a stopper is threaded through the casing at the garment hem. The trousers are floor length.



## IMPORTANT!

---

The contents of this pattern are copyright protected and belong exclusively to Vikisews. You may use Vikisews patterns for personal use. It is prohibited to share Vikisews patterns and instructions with third parties, as well as to publish patterns and instructions online for public access. **Non-compliance with the mentioned rules is a violation of the US copyright law and may result in civil liability and criminal prosecution.**

You may use Vikisews patterns for commercial use, to sew custom-made garments and/or create fashion collections, on the condition that the patterns are solely used in a manufacturing setting and are not further shared with individuals.

# TOTAL EASE ALLOWANCE

	Waistline ease	Hipline ease
cm	8.3–8.4	5.7–7.3
inches	3 1/4	2 1/4–2 7/8

## GARMENT LENGTH

Height, cm	Side seam length including waistband, cm	Height, ft	Side seam length including waistband, in
1 (154–160)	99.2–100.9	1 (5'1"–5'3")	39–39 3/4
2 (162–168)	103.5–105.2	2 (5'4"–5'6")	40 3/4–41 3/8
3 (170–176)	107.8–109.5	3 (5'7"–5'9")	42 1/2–43 1/8
4 (178–184)	112.1–113.8	4 (5'10"–6'1")	44 1/8–44 3/4

### Finished hem width, all heights

	34	36	38	40	42	44	46	48	50	52
cm	26.6	27	27.5	27.9	28.4	28.8	29.3	29.7	30.2	30.6
inches	10 1/2	10 5/8	10 7/8	11	11 1/8	11 3/8	11 1/2	11 3/4	11 7/8	12

## SUGGESTED FABRIC

To sew the trousers, choose fabrics with the following properties:

- Medium weight, malleable, breathable, non-stretch or with very little stretch, opaque
- The fiber content can include natural fibers (cotton) or blends (cotton + viscose, etc.)
- The following fabrics are recommended: twill, denim, corduroy

**Attention!** We do not recommend stretchy knit materials and lightweight sheer fabrics (chiffon, organza, stretch lace).

For the pocket bags, we recommend using cotton, challis or poplin.

The garment in the photo is made of denim. The fabric is medium weight, malleable and with little stretch. The fiber content for the pocket bags is 100% cotton.

# PATTERN PIECES LIST

---

## 1. From main fabric:

- Front leg — cut 2
- Back leg — cut 2
- Back yoke — cut 2
- Slash pocket – cut 2
- Patch pocket — cut 2
- Side patch pocket — cut 2
- Side patch pocket flap — cut 4
- Slash pocket flap — cut 4
- Right waistband — cut 2
- Left waistband — cut 2
- Strap – cut 1 on fold
- Strap loop — cut 1
- Pocket bag — cut 2
- Belt loop — cut 1 (5 pieces)
- Fly shield — cut 1 on fold

## 2. From lining fabric:

- Pocket bag — cut 2

**IMPORTANT!** Don't forget to transfer all pattern notches onto the fabric.

## 3. From interfacing:

- Right waistband — cut 2
- Left waistband — cut 2
- Side patch pocket flap — cut 2
- Slash pocket flap — cut 2

## Additionally, cut the following from interfacing:

- Four 3 cm (1 1/8") wide strips (length according to the paper pattern) to be attached to the top edge of the back patch pockets and the top edge of the side patch pockets
- One 4 cm (1 5/8") wide strip (length according to the paper pattern) to be attached to the fly front seam allowance on the right front leg
- One 1.5 cm (5/8") wide strip (length according to the paper pattern) to be attached to the zipper seam allowance on the left front leg
- Two 3x5 cm (1 1/8" by 2") strips to be attached to the eyelet placement sections on the back and front legs
- Six 3x3 cm (1 1/8" by 1 1/8") square pieces to be attached to the snap placement sections on the front: slash pocket flaps, right and left waistband pieces

# SEAM ALLOWANCES

---

## All pattern pieces include seam allowances:

- Garment hem — 3 cm (1 1/8")
- Top edge of the patch pocket — 3 cm (1 1/8")
- Top edge of the side patch pocket — 3 cm (1 1/8")
- All the other edges — 1 cm (3/8")

Take this into account when laying out the pattern pieces on the fabric.





Press the seam flat.



Overlock the seam allowance with the back leg facing up.

Press the seam allowance to the yoke.



Topstitch along the yoke at 7 mm (1/4") from the yoke seam, using topstitching thread. The stitch length is 4 mm.

Press.