

FROM THE FOUNDER OF THE #VIKISEWS BRAND

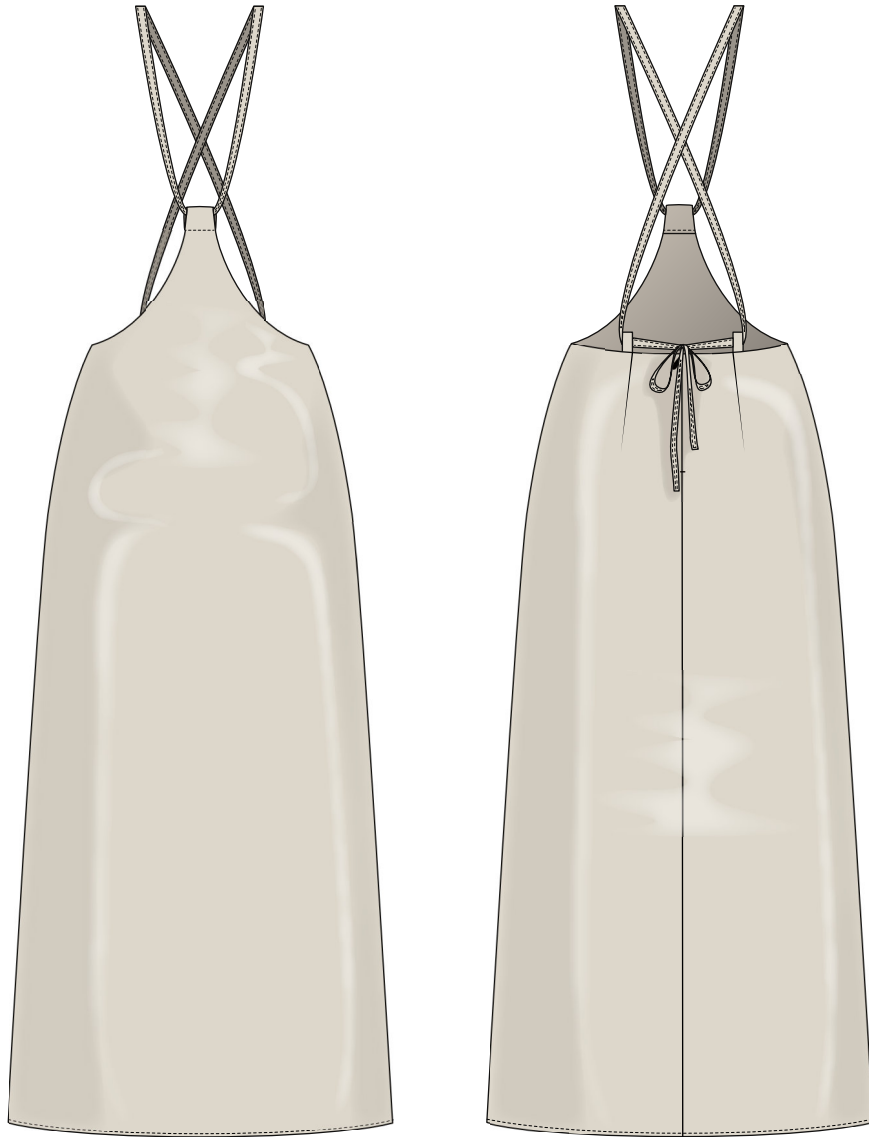


Back in 2016, when I was working on my first set of sewing instructions, I was trying to write them in such a way that even a complete beginner could easily understand and use them to create their very first garment. These instructions laid the foundation for the Vikisews brand, its vision and its mission. I wanted to create modern patterns with the utmost detailed and clear instructions.

Now, with each new collection we are constantly improving our instructions, amending them and adding more relevant details. By the time the final product reaches you, our drafters, correctors, and editors would have spent weeks perfecting every word and every photograph. If you compile a few of our instructions together, you will get a sewing manual that will assist you in sewing all kinds of garments at any difficulty level.

And I would be very happy if these instructions helped you to turn your hobby into a lifelong passion... Enjoy the process! Create your ultimate dream wardrobe! Wear your garments proudly for years to come!

If you have any questions, please contact us at info@vikisews.com — we are always there to help.



SURI PATTERN DESCRIPTION

Suri is a lined, close-fitting, straight-cut, A-line dress. The front has a narrow extension beneath the bust line, with curved edges toward the side seams. The extension finishes with a loop for the strap. The long strap is threaded through the loop at the center front, criss-crosses at the back, goes through the belt loops, and then ties into a knot at the center back. The dress fastens with an invisible zipper located in the center back seam. Suri is midi-length.



IMPORTANT!

The contents of this pattern are copyright protected and belong exclusively to Vikisews. You may use Vikisews patterns for personal use. It is prohibited to share Vikisews patterns and instructions with third parties, as well as to publish patterns and instructions online for public access. **Non-compliance with the mentioned rules is a violation of the US copyright law and may result in civil liability and criminal prosecution.**

You may use Vikisews patterns for commercial use, to sew custom-made garments and/or create fashion collections, on the condition that the patterns are solely used in a manufacturing setting and are not further shared with individuals.

TOTAL EASE ALLOWANCE

	Waistline ease	Hipline ease
cm	5	5.5
inches	2	2 1/8

GARMENT LENGTH

Height, cm	Center back seam length, cm	Height, ft	Center back seam length, in
1 (154–160)	80	1 (5'1"–5'3")	31 1/2
2 (162–168)	83	2 (5'4"–5'6")	32 5/8
3 (170–176)	86	3 (5'7"–5'9")	33 7/8
4 (178–184)	89	4 (5'10"–6'1")	35

SUGGESTED FABRIC

To sew this dress, choose suiting and dress-weight fabrics with the following properties:

- medium-weight, pliable, non-stretch or low-stretch, opaque
- the fabric content can include natural (wool, silk, cotton, linen), artificial (viscose), blends (wool + silk, wool + polyester, cotton + viscose, etc.), and synthetic fibers (polyester, polyester + elastane)
- the following fabrics are recommended: suiting wool, gabardine, denim, corduroy, faux leather, suede.

Attention! We do not recommend very stretchy knit materials (jersey fabric) and lightweight sheer fabrics (chiffon, organza, stretch lace).

For the lining, choose lining fabrics made of artificial (viscose), blends (viscose + elastane, viscose + polyester), or synthetic fibers (polyester, polyester + elastane).

The dress in the photo is made of faux leather. This fabric is medium-weight, pliable, and has little stretch. The fiber content is a blend of man-made silk, polyurethane and elastane.

The lining is 100% viscose.

PATTERN PIECES LIST

1. From main fabric:

- front – cut 1 on fold
- back – cut 2
- front facing – cut 1 on fold
- back facing – cut 2
- strap – cut 2
- belt loop – cut 1 (makes 2).

IMPORTANT! Don't forget to transfer all pattern markings and notches onto the fabric.

2. From lining fabric:

- front lining – cut 1 on fold
- back lining – cut 2

3. From interfacing:

- back facing – cut 2
- front facing – cut 1 on fold

SEAM ALLOWANCES

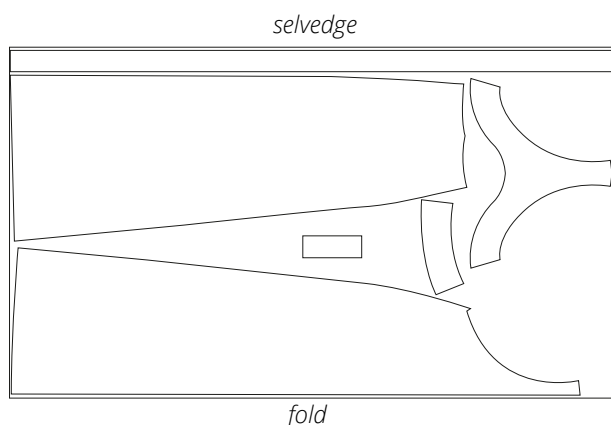
All pattern pieces include seam allowances as follows:

- hem allowance – 2 cm (3/4")
- all other seams – 1 cm (3/8").

Take this into account when laying out pattern pieces on the fabric.

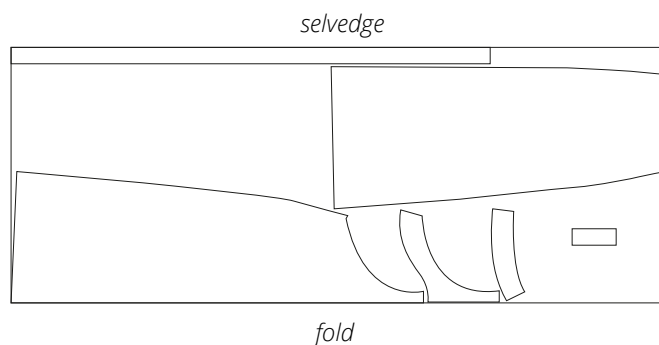
CUTTING LAYOUT

Main fabric with a directional print and nap, 140 cm (55") wide, folded, for sizes 34–36 in all heights



Important! The belt loop and front facing pieces are to be cut on a single layer out of leftover fabric. Cut only one of each piece.

Main fabric with a directional print and nap, 140 cm (55") wide, folded, for sizes 38–46 in all heights



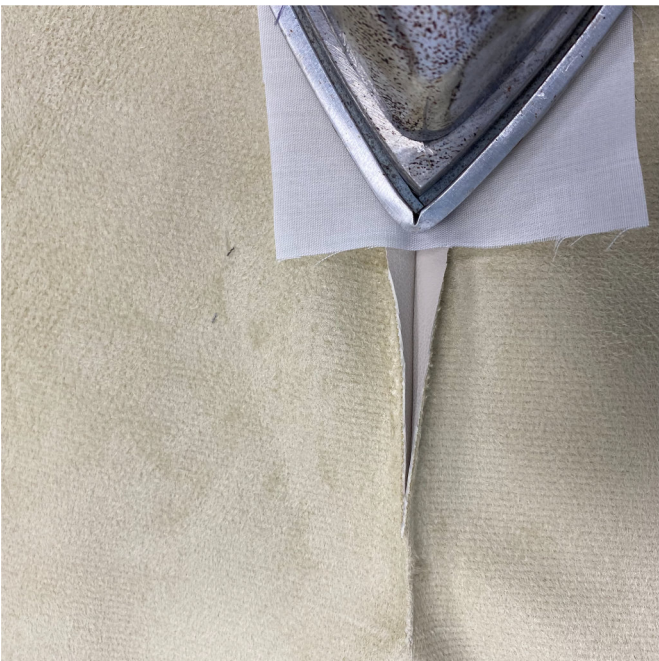
Important! The belt loop piece is to be cut on a single layer out of leftover fabric. Cut one belt loop piece only.



- Trim the seam allowances down, at 1 cm (3/8") from the stitching line.
- There is no need to trim the seam allowance down when sewing suiting fabric.



Clip into the seam allowance at the bottom part of the dart, stopping 1–1.5 cm (3/8–5/8") short of the dart point.



- When sewing faux leather: insert fusible web underneath the seam allowances and then press them open using a pressing cloth.
- When sewing suiting fabric: press the dart toward the center.