

FROM THE FOUNDER OF THE #VIKISEWS BRAND

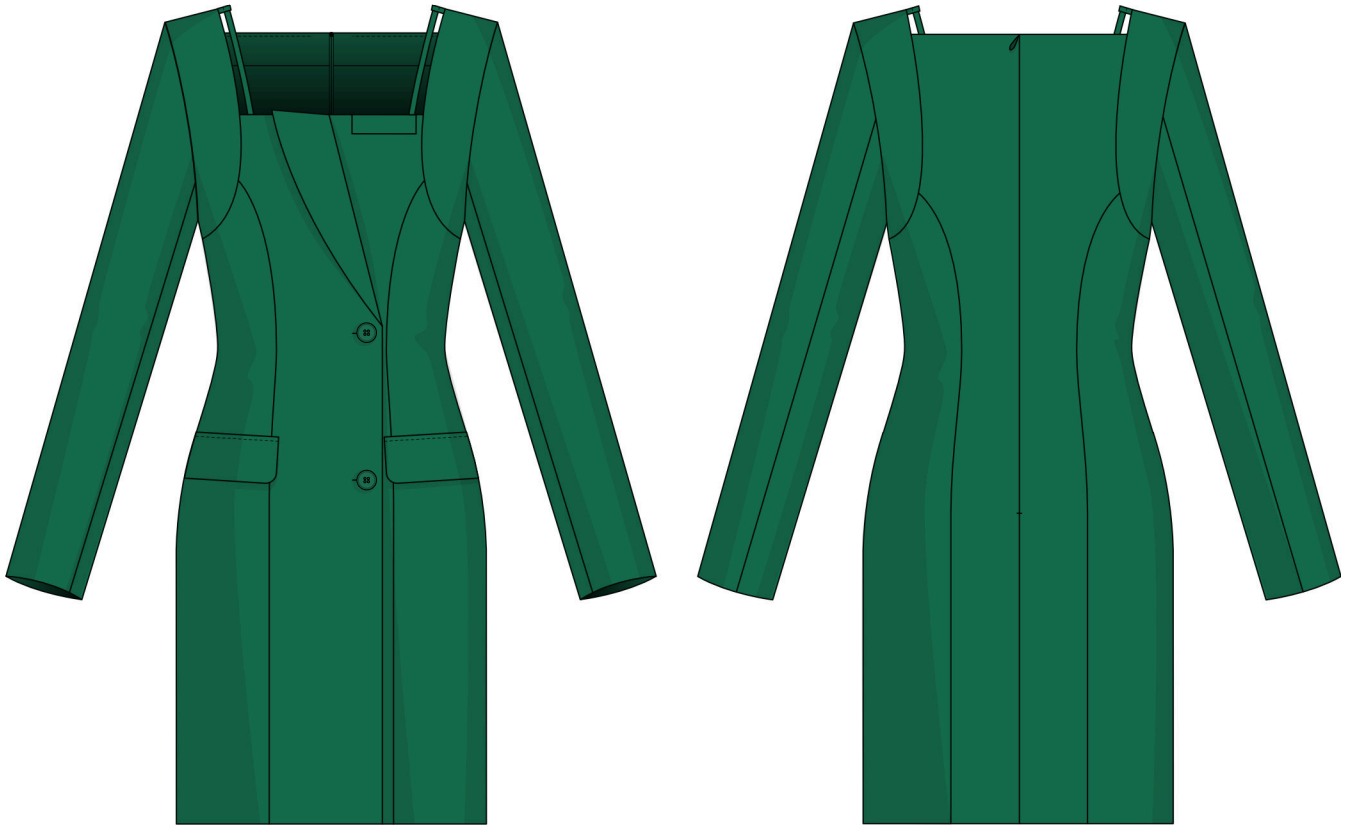


Back in 2016, when I was working on my first set of sewing instructions, I was trying to write them in such a way that even a complete beginner could easily understand and use them to create their very first garment. These instructions laid the foundation for the Vikisews brand, its vision and its mission. I wanted to create modern patterns with the most detailed and clear instructions.

Now, with each new collection we are constantly improving our instructions, amending them and adding more relevant details. By the time the final product reaches you, our drafters, correctors, and editors would have spent weeks perfecting every word and every photograph. If you compile a few of our instructions together, you will get a sewing manual that will assist you in sewing all kinds of garments at any difficulty level.

And I would be very happy if these instructions helped you to turn your hobby into a lifelong passion... Enjoy the process! Create your ultimate dream wardrobe! Wear your garments proudly for years to come!

If you have any questions, please contact us at info@vikisews.com - we are always there to help.



CHARLIZE PATTERN DESCRIPTION

Charlize is a close-fitting dress with a sheath silhouette due to front and back princess seams. The front and back feature curved band pieces along the armholes. There are thin straps along the band pieces, attached to the front and back necklines and secured in the shoulder seams. The front pieces feature flaps and an asymmetric lapel. Charlize has a faux double-breasted fastening with buttons and buttonholes. The front and back pieces are finished with a free-hanging lining. The dress features long, set-in, two-piece, fitted sleeves, and is above-knee length.



IMPORTANT!

The contents of this pattern are copyright protected and belong exclusively to Vikisews. You may use Vikisews patterns for personal use. It is prohibited to share Vikisews patterns and instructions with third parties, as well as to publish patterns and instructions online for public access. **Non-compliance with the mentioned rules is a violation of the US copyright law and may result in civil liability and criminal prosecution.**

You may use Vikisews patterns for commercial use, to sew custom-made garments and/or create fashion collections, on the condition that the patterns are solely used in a manufacturing setting and are not further shared with individuals.

TOTAL EASE ALLOWANCE

	Bust ease	Waistline ease	Hipline ease	Upper arm ease
cm	8.8–9.4	11.1–11.2	9	7
inches	3 1/2–3 3/4	4 3/8	3 1/2	2 3/4

GARMENT LENGTH, SLEEVE LENGTH

Height, cm	Garment length from waist down (different for each size), cm	Sleeve length, cm
1 (154–160)	47	59–60
2 (162–168)	49	61.1–62.1
3 (170–176)	51	63–64
4 (178–184)	53	65–65.9
Height, ft	Garment length from waist down (different for each size), in	Sleeve length, in
1 (5'1"–5'3")	18 1/2	23 1/4–23 5/8
2 (5'4"–5'6")	19 1/4	24–24 1/2
3 (5'7"–5'9")	20 1/8	24 3/4–25 1/4
4 (5'10"–6'1")	20 7/8	25 5/8–26

SUGGESTED FABRIC

To sew this dress, choose woven fabrics with the following properties:

- Medium weight, easily pressed and steamed, breathable, soft, non-stretch or with very little stretch, opaque
- The fiber content can include natural fibers (wool, silk, cotton), artificial (viscose), blends (wool + silk, wool + polyester, wool + cotton, etc.), and synthetic (polyester, polyester + viscose)
- The following fabrics are recommended: dress-weight wool, gabardine, wool crepe.

Attention! We do not recommend stretchy knit materials and lightweight sheer fabrics (chiffon, organza, stretch lace).

For the lining, we recommend artificial fibers (viscose), blends (viscose + elastane, viscose + polyester), or synthetic fibers (polyester, polyester + elastane).

The dress in the photo is made of suiting fabric. This material is medium weight, soft, with very little stretch and presses well. The fiber content is a blend: 65% polyester + 35% viscose. The lining is 100% viscose.

IMPORTANT! When purchasing fabric, please account for shrinkage and buy 5% more than required.

4. One 55 cm (21 5/8") invisible zipper for all sizes and heights
5. Stitched fusible stay tape – 5 m (5 1/2 yd)
6. Stitched bias-cut fusible stay tape with stitch reinforcement – 1.2 m (1 1/4 yd)
7. Two buttons 2.2 cm (7/8") in diameter
8. One backing button 2.2 cm (7/8") in diameter
9. Matching thread – 5 spools (1 spool for the sewing machine + 4 spools for the overlocker)

TOOLS AND EQUIPMENT

- Sewing machine for construction
- Overlocker for finishing raw edges. This may be replaced with a stretch overlock stitch or a zigzag stitch on the sewing machine (overlock or zigzag stitch width 2–3 mm [1/8"], stitch length 2.5 mm [1/8"])
- Buttonhole foot for the sewing machine
- Stitch-in-the-ditch foot for the sewing machine (optional)
- Invisible zipper foot for the sewing machine

PATTERN PIECES LIST

1. From main fabric:

- left front – cut 1
- right front – cut 1
- side front – cut 2
- front band – cut 4
- left front facing – cut 1
- right front facing – cut 1
- back – cut 2
- side back – cut 2
- back band – cut 4
- back facing – cut 2
- top sleeve – cut 2
- bottom sleeve – cut 2
- flap – cut 2
- welt – cut 1
- strap – cut 2
- strap retainer – cut 2

2. From lining fabric:

- back lining – cut 2
- side back lining – cut 2
- side front lining – cut 2
- flap lining – cut 2



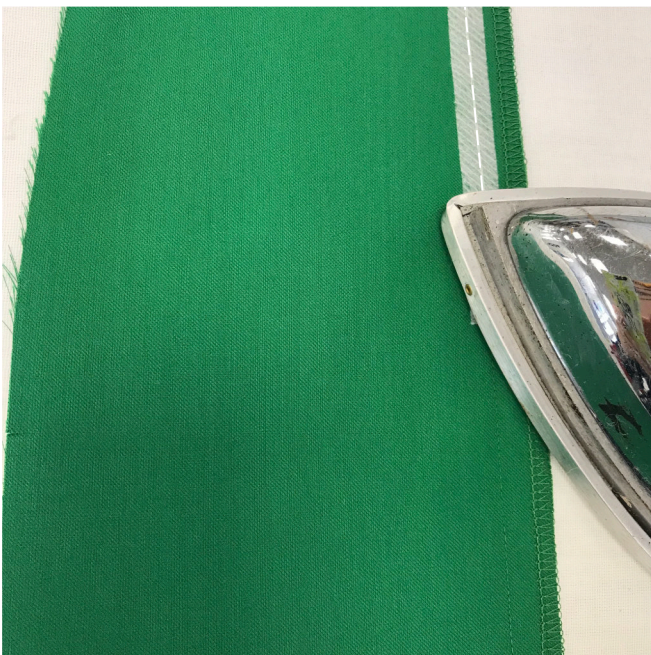
Press and steam the zipper tape to prevent it from shrinking in the garment.



Place the back pieces right sides together along the center seam.

Align the edges, match the notches, and pin. Baste along the zipper stitching line.

Stitch on the machine from the mark to the garment bottom edge. Backstitch at the beginning and end.



Press the seam flat.