

FROM THE FOUNDER OF THE #VIKISEWS BRAND

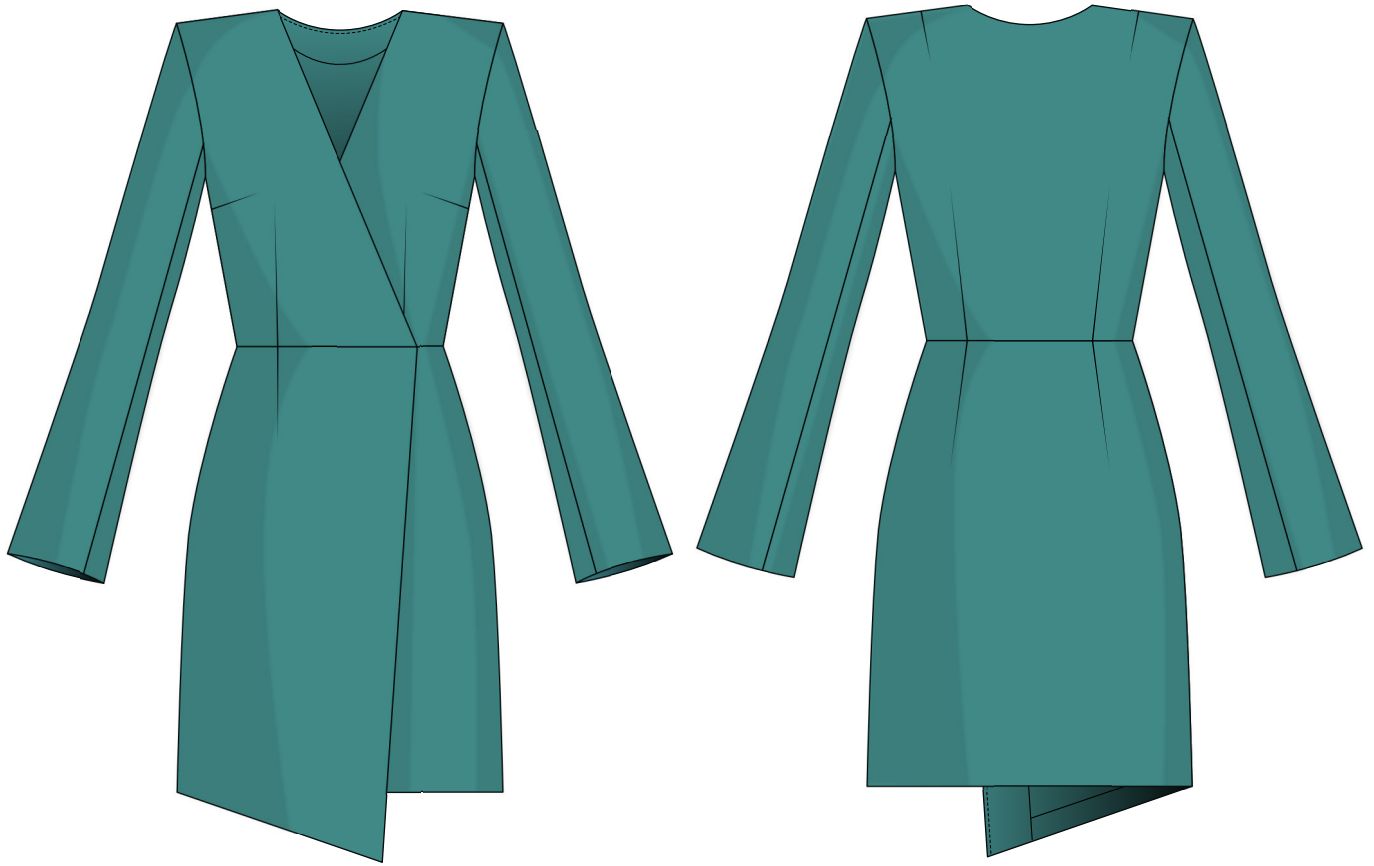


Back in 2016, when I was working on my first set of sewing instructions, I was trying to write them in such a way that even a complete beginner could easily understand and use them to create their very first garment. These instructions laid the foundation for the Vikisews brand, its vision and its mission. I wanted to create modern patterns with the most detailed and clear instructions.

Now, with each new collection we are constantly improving our instructions, amending them and adding more relevant details. By the time the final product reaches you, our drafters, correctors, and editors would have spent weeks perfecting every word and every photograph. If you compile a few of our instructions together, you will get a sewing manual that will assist you in sewing all kinds of garments at any difficulty level.

And I would be very happy if these instructions helped you to turn your hobby into a lifelong passion... Enjoy the process! Create your ultimate dream wardrobe! Wear your garments proudly for years to come!

If you have any questions, please contact us at info@vikisews.com - we are always there to help.



EMILY PATTERN DESCRIPTION

Emily is a close-fitted wrap dress with an accentuated waist. The skirt has a gentle A-line shape, the dress has a waist seam, a deep V-neckline, and it fastens with sew-on snaps. The bodice is fitted with waist and bust darts at the front, and waist and shoulder darts at the back. The shoulder line is slightly extended to accommodate shoulder pads. The long, set-in, two-piece sleeves are fitted along the arm and flared at the hem. Emily has an asymmetric hemline and is above-the-knee length.



IMPORTANT!

The contents of this pattern are copyright protected and belong exclusively to Vikisews. You may use Vikisews patterns for personal use. It is prohibited to share Vikisews patterns and instructions with third parties, as well as to publish patterns and instructions online for public access. **Non-compliance with the mentioned rules is a violation of the US copyright law and may result in civil liability and criminal prosecution.**

You may use Vikisews patterns for commercial use, to sew custom-made garments and/or create fashion collections, on the condition that the patterns are solely used in a manufacturing setting and are not further shared with individuals.

TOTAL EASE ALLOWANCE

	Bust ease	Waistline ease	Hipline ease	Upper arm ease
cm	8.7–10.7	5–6.6	6.7–7.4	4.2–4.8
inches	3 3/8–4 1/4	2–2 5/8	2 5/8–2 7/8	1 5/8–1 7/8

GARMENT LENGTH, SLEEVE LENGTH

Height, cm	Back length from waist down, cm	Sleeve length, cm
1 (154–160)	42.5	60.4–60.5
2 (162–168)	45.5	62.4–62.5
3 (170–176)	48.5	64.3–64.5
4 (178–184)	51.5	66.3–66.5

Height, ft	Back length from waist down, in	Sleeve length, in
1 (5'1"–5'3")	16 3/4	23 3/4–23 7/8
2 (5'4"–5'6")	17 7/8	24 5/8
3 (5'7"–5'9")	19 1/8	25 3/8
4 (5'10"–6'1")	20 1/4	26 1/8

SUGGESTED FABRIC

To sew this dress, choose woven fabrics with the following properties:

- Medium weight, easily shaped with steam, breathable, soft, non-stretch or with very little stretch, opaque
- The fiber content can include natural fibers (wool, silk), artificial (viscose), blends (wool + silk, wool + polyester, viscose + polyester) and synthetic (polyester, polyester + elastane)
- The following fabrics are recommended: dress-weight wool, gabardine, wool crepe

Attention! We do not recommend stretchy knits and lightweight sheer fabrics (chiffon, organza, stretch lace).

The dress in the photo is made of suiting fabric. This fabric is medium weight, presses well, is soft and has very little stretch. The fiber content is a blend of 90% wool and 10% polyester.

2. Fusible interfacing, 140cm (55") wide, for all sizes:

Height, cm	Metres	Height, ft	Yards
1 (154–160)	0.55	1 (5'1"–5'3")	5/8
2 (162–168)	0.58	2 (5'4"–5'6")	5/8
3 (170–176)	0.61	3 (5'7"–5'9")	5/8
4 (178–184)	0.64	4 (5'10"–6'1")	3/4

IMPORTANT! When purchasing fabric, please account for shrinkage and buy 5% more than required.

3. Stitched bias-cut fusible stay tape with stitch reinforcement, 1.5cm (5/8") wide — 3.5m (3 7/8 yards)

4. Two sew-on snaps, 0.7–1cm (1/4"–3/8") in diameter

5. Matching thread — 5 spools (1 spool for the sewing machine and 4 spools for the overlocker)

6. One pair of shoulder pads, 0.8cm (just under 3/8") in height

TOOLS AND EQUIPMENT

- Sewing machine for construction
- Overlocker for finishing raw edges. This may be replaced with a stretch overlock stitch or a zigzag stitch on the sewing machine (overlock or zigzag stitch width 2-3mm, stitch length 2.5mm)
- Stitch-in-the-ditch foot for your sewing machine (optional)

PATTERN PIECES LIST

1. From main fabric:

- Front bodice — cut 2
- Back bodice — cut 1 on fold
- Left front skirt — cut 1
- Right front skirt — cut 1
- Back skirt — cut 1 on fold
- Top sleeve — cut 2
- Bottom sleeve — cut 2
- Left front skirt facing — cut 1
- Right front skirt facing — cut 1
- Back neck facing — cut 1 on fold
- Front bodice facing — cut 2

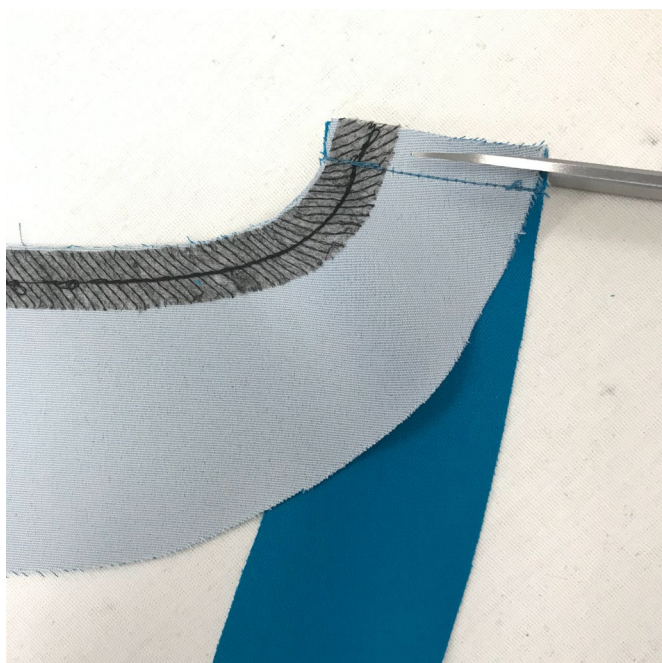
IMPORTANT! Don't forget to transfer all pattern markings and notches onto the fabric.

2. From interfacing:

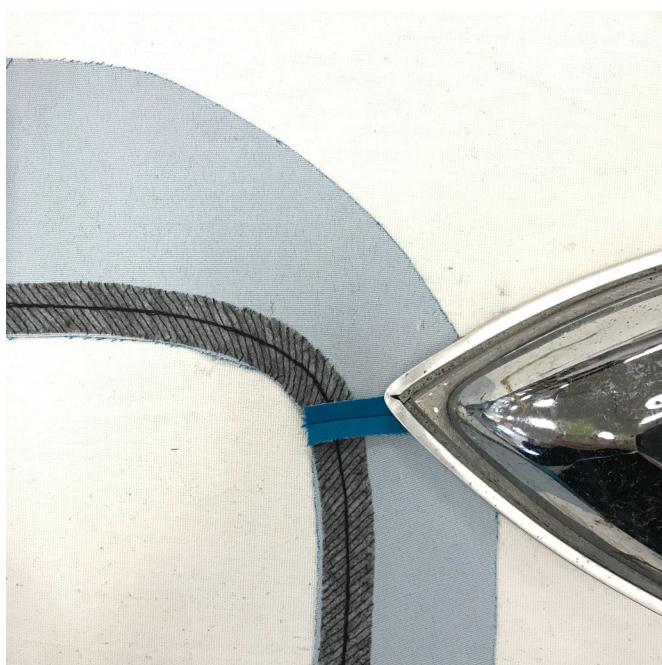
- Left front skirt facing — cut 1
- Right front skirt facing — cut 1
- Back neck facing — cut 1 on fold
- Front bodice facing — cut 2



Machine-stitch, backstitching at the beginning and end. Press the seams flat.



Trim the seam allowances down to 5mm (3/16").



Press the seam allowances open.