

FROM THE FOUNDER OF THE #VIKISEWS BRAND

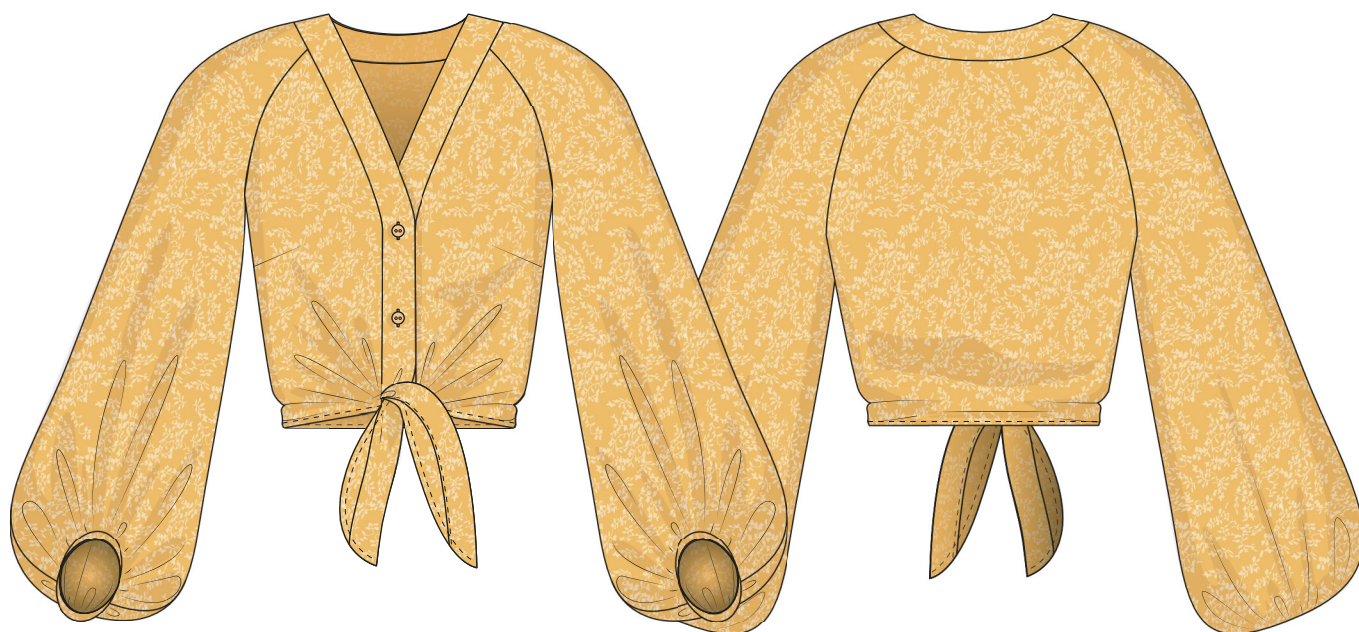


Back in 2016, when I was working on my first set of sewing instructions, I was trying to write them in such a way that even a complete beginner could easily understand and use them to create their very first garment. These instructions laid the foundation for the Vikisews brand, its vision and its mission. I wanted to create modern patterns with the most detailed and clear instructions.

Now, with each new collection we are constantly improving our instructions, amending them and adding more relevant details. By the time the final product reaches you, our drafters, correctors, and editors would have spent weeks perfecting every word and every photograph. If you compile a few of our instructions together, you will get a sewing manual that will assist you in sewing all kinds of garments at any difficulty level.

And I would be very happy if these instructions helped you to turn your hobby into a lifelong passion... Enjoy the process! Create your ultimate dream wardrobe! Wear your garments proudly for years to come!

If you have any questions, please contact us at info@vikisews.com - we are always there to help.



LUCY PATTERN DESCRIPTION

Lucy is a fitted at the waist moderate volume blouse. The front bust darts are integrated into the side seams, the front ties are part of the front panels. It has a deep V-neck and a front button placket. The raglan sleeve flares out into a wide gathered bishop shape at the bottom. The bottom of the sleeve is asymmetrical, slightly shorter at the front, and is finished with a continuous narrow cuff. The bottom of the blouse sits at the natural waist.



IMPORTANT!

The contents of this pattern are copyright protected and belong exclusively to Vikisews. You may use Vikisews patterns for personal use. It is prohibited to share Vikisews patterns and instructions with third parties, as well as to publish patterns and instructions online for public access. **Non-compliance with the mentioned rules is a violation of the US copyright law and may result in civil liability and criminal prosecution.**

You may use Vikisews patterns for commercial use, to sew custom-made garments and/or create fashion collections, on the condition that the patterns are solely used in a manufacturing setting and are not further shared with individuals.

TOTAL EASE ALLOWANCE

	Bust ease	Waistline ease	Upper arm ease
cm	11.6–11.8	15.5–15.9	7.5
inches	4 5/8	6 1/8–6 1/4	3

GARMENT LENGTH, SLEEVE LENGTH

Height, cm	Garment length at center back, cm	Sleeve length, including shoulder width, cm
1 (154-160)	38.9-40.7	63-65
2 (162-168)	39.9-41.7	65.1-67
3 (170-176)	40.9-42.7	66.8-68.9
4 (178-184)	41.9-43.7	68.7-70.8

Height, ft	Garment length at center back, in	Sleeve length, including shoulder width, in
1 (5'1"–5'3")	15 3/8–16	24 3/4–25 5/8
2 (5'4"–5'6")	15 3/4–16 3/8	25 5/8–26 3/8
3 (5'7"–5'9")	16 1/8–16 3/4	26 1/4–27 1/8
4 (5'10"–6'1")	16 1/2–17 1/4	27–27 7/8

SUGGESTED FABRIC

To sew this blouse, choose dress weight fabrics with the following properties:

- medium- and lightweight, soft, pliable or not pliable, non-stretch
- the fiber content can include natural fibers (silk, cotton, linen), man-made fibers (acetate, viscose), blends (cotton + viscose, etc.), and synthetic fibers (polyester)
- the following fabrics are recommended: satin, natural and artificial silk, poplin, linen, broderie anglaise, shirting cotton, viscose, batiste.

The blouse in the photo has been made with a medium-weight, non-stretch, soft, pliable, 100% polyester fabric.

TOOLS AND EQUIPMENT

- sewing machine for construction
- overlocker for finishing raw edges. This may be replaced with a stretch overlock stitch or a zigzag stitch on your sewing machine (overlock or zigzag stitch width 2-3mm, stitch length 2.5mm)
- edgestitch foot for the sewing machine (optional)
- buttonhole foot for the sewing machine

PATTERN PIECES LIST

1. From the main fabric:

- front – cut 2
- back – cut 1 on fold
- front sleeve – cut 2
- back sleeve – cut 2
- front placket – cut 4
- back placket – cut 2 on fold
- sleeve hem binding – cut 2

2. From Interfacing:

- front placket – cut 4
- back placket – cut 2 on fold

IMPORTANT! Don't forget to transfer all the notches from the pattern to your fabric.

SEAM ALLOWANCES

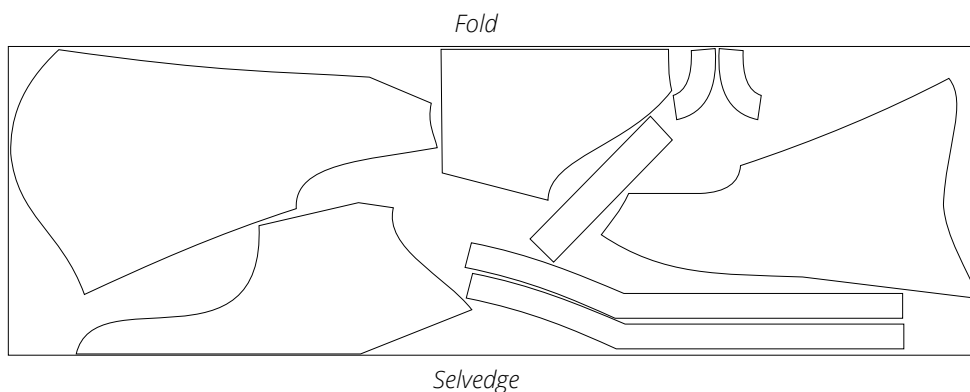
Pattern pieces include the following seam allowances:

- all edges - 1cm (3/8")

Take this into account when laying out pattern pieces on the fabric.

CUTTING LAYOUT

Main fabric, 110cm (43") wide on fold, for sizes 34 – 40 in all heights,
for a non-directional print





Press the seam as sewn.



Press the dart towards the armhole.



Fold and press 5mm (just under 1/4") of the bottom raw edge of the front piece to the wrong side.