

# FROM THE FOUNDER OF THE #VIKISEWS BRAND

---



Back in 2016, when I was working on my first set of sewing instructions, I was trying to write them in such a way that even a complete beginner could easily understand and use them to create their very first garment. These instructions laid the foundation for the Vikisews brand, its vision and its mission. I wanted to create modern patterns with the utmost detailed and clear instructions.

Now, with each new collection we are constantly improving our instructions, amending them and adding more relevant details. By the time the final product reaches you, our drafters, correctors, and editors would have spent weeks perfecting every word and every photograph. If you compile a few of our instructions together, you will get a sewing manual that will assist you in sewing all kinds of garments at any difficulty level.

And I would be very happy if these instructions helped you to turn your hobby into a lifelong passion... Enjoy the process! Create your ultimate dream wardrobe! Wear your garments proudly for years to come!

If you have any questions, please contact us at [info@vikisews.com](mailto:info@vikisews.com) — we are always there to help.



## CARMELIA PATTERN DESCRIPTION

---

Carmelia is a loose-fitting tiered trapeze dress. The front and back feature yokes with ties. There is a neckline slit in the center front seam. The front, back, sleeves, and skirt tiers are gathered along the top edge. The waist casing is threaded with a tie. The long and voluminous sleeves have a hem casing threaded with a tie. The round neckline is gathered with a tie. The dress is available in above-knee and floor-length options.



## IMPORTANT!

---

The contents of this pattern are copyright protected and belong exclusively to Vikisews. You may use Vikisews patterns for personal use. It is prohibited to share Vikisews patterns and instructions with third parties, as well as to publish patterns and instructions online for public access. **Non-compliance with the mentioned rules is a violation of the US copyright law and may result in civil liability and criminal prosecution.**

You may use Vikisews patterns for commercial use, to sew custom-made garments and/or create fashion collections, on the condition that the patterns are solely used in a manufacturing setting and are not further shared with individuals.

# TOTAL EASE ALLOWANCE

	Bust ease	Waistline ease	Hipline ease	Upper arm ease
cm	62.8–81.5	83.5–100.2	166.7–210.5	47.2–49.1
inches	24 3/4–32 1/8	32 7/8–39 1/2	65 5/8–82 7/8	18 5/8–19 3/8

# GARMENT LENGTH, SLEEVE LENGTH

Height, cm	Back length (mini dress), cm	Back length (maxi dress), cm	Sleeve length, cm
1 (154–160)	79.9	140.5	74.1
2 (162–168)	82.9	144.5	76.2
3 (170–176)	86.2	148.5	78.1
4 (178–184)	96.1	152.5	80.3
Height, ft	Back length (mini dress), in	Back length (maxi dress), in	Sleeve length, in
1 (5'1"–5'3")	31 1/2	55 3/8	29 1/8
2 (5'4"–5'6")	32 5/8	56 7/8	30
3 (5'7"–5'9")	33 7/8	58 1/2	30 3/4
4 (5'10"–6'1")	37 7/8	60	31 5/8

# SUGGESTED FABRIC

To sew this dress, choose dress-weight fabrics with the following properties:

- lightweight, pliable, soft, with good drape, non- or low-stretch
- the fiber content can include natural fibers (silk, cotton), artificial fibers (viscose), blends (cotton + viscose, etc.), and synthetics (polyester, polyester + elastane)
- the following fabrics are recommended: dress-weight silk, chiffon, crepe chiffon, batiste, challis

**Attention!** We do not recommend heavyweight fabrics without drape.

We recommend using the same fabric for the lining as for the main garment.

The dress in the photo is made of dress-weight polyester. The fabric is pliable, soft, and low-stretch. The fiber content is 100% polyester. The fabric weight is 55–150 g/m<sup>2</sup>.

# PATTERN PIECES LIST

---

- front yoke — cut 2
- back yoke — cut 1 on fold
- top front\* — cut 2 (cut 4 for the mini dress)
- top back\* — cut 1 on fold (cut 2 for the mini dress)
- sleeve — cut 2
- front mid tier — cut 1 on fold
- back mid tier — cut 1 on fold
- front bottom tier\*\* — cut 1 on fold
- back bottom tier\*\* — cut 1 on fold
- front casing — cut 2

- back casing — cut 1 on fold
- yoke tie — cut 2
- neckline tie — cut 1
- casing tie — cut 1
- sleeve tie — cut 2

\*the piece is used for the lining. Lengthen it by the amount specified on the pattern.

\*\*the piece is not required for the mini dress.

***IMPORTANT!** Don't forget to transfer all pattern markings and notches onto the fabric.*

# SEAM ALLOWANCES

---

All pattern pieces include seam allowances as follows:

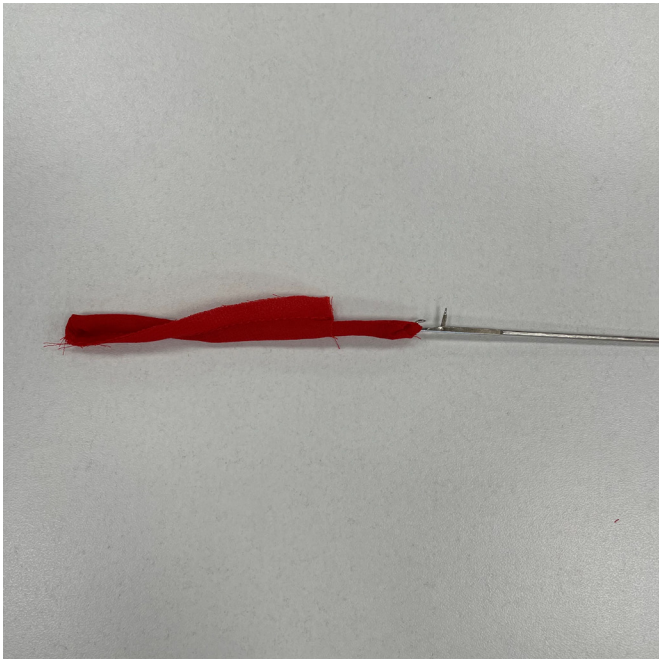
- neckline edge — 2 cm (3/4")
- sleeve hem allowance — 2 cm (3/4")
- all other edges — 1 cm (3/8")

Take this into account when laying out pattern pieces on the fabric.

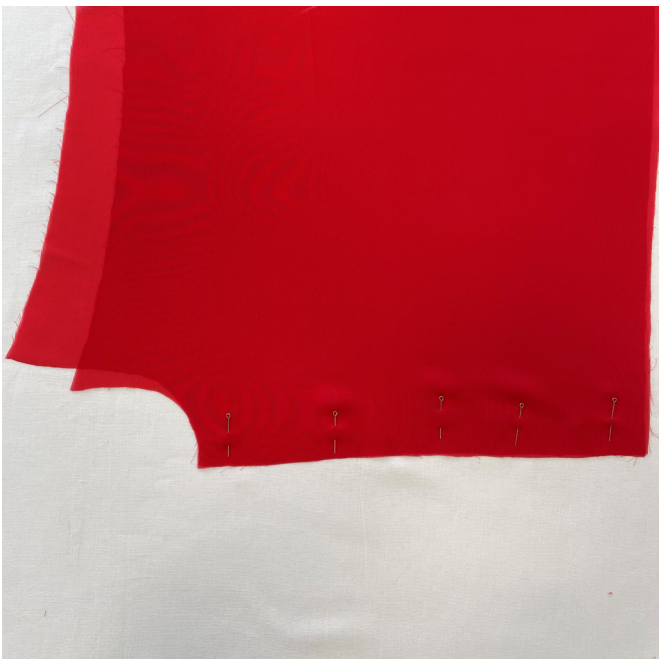




Fold each of the tie pieces in half lengthwise, right sides together. Pin, baste and machine-stitch. Start stitching at 0.7–1 cm (1/4–3/8") from the fold. After making a 1–1.5 cm (3/8–5/8") seam, move towards the fold and continue stitching at 5 mm (just under 1/4") from the fold. Backstitch at the beginning and end of the seam. Remove the basting stitches.



Turn the tie right side out using a loop turner.



Place the top front and top back pieces right sides together and align the side edges. Pin and hand-baste.