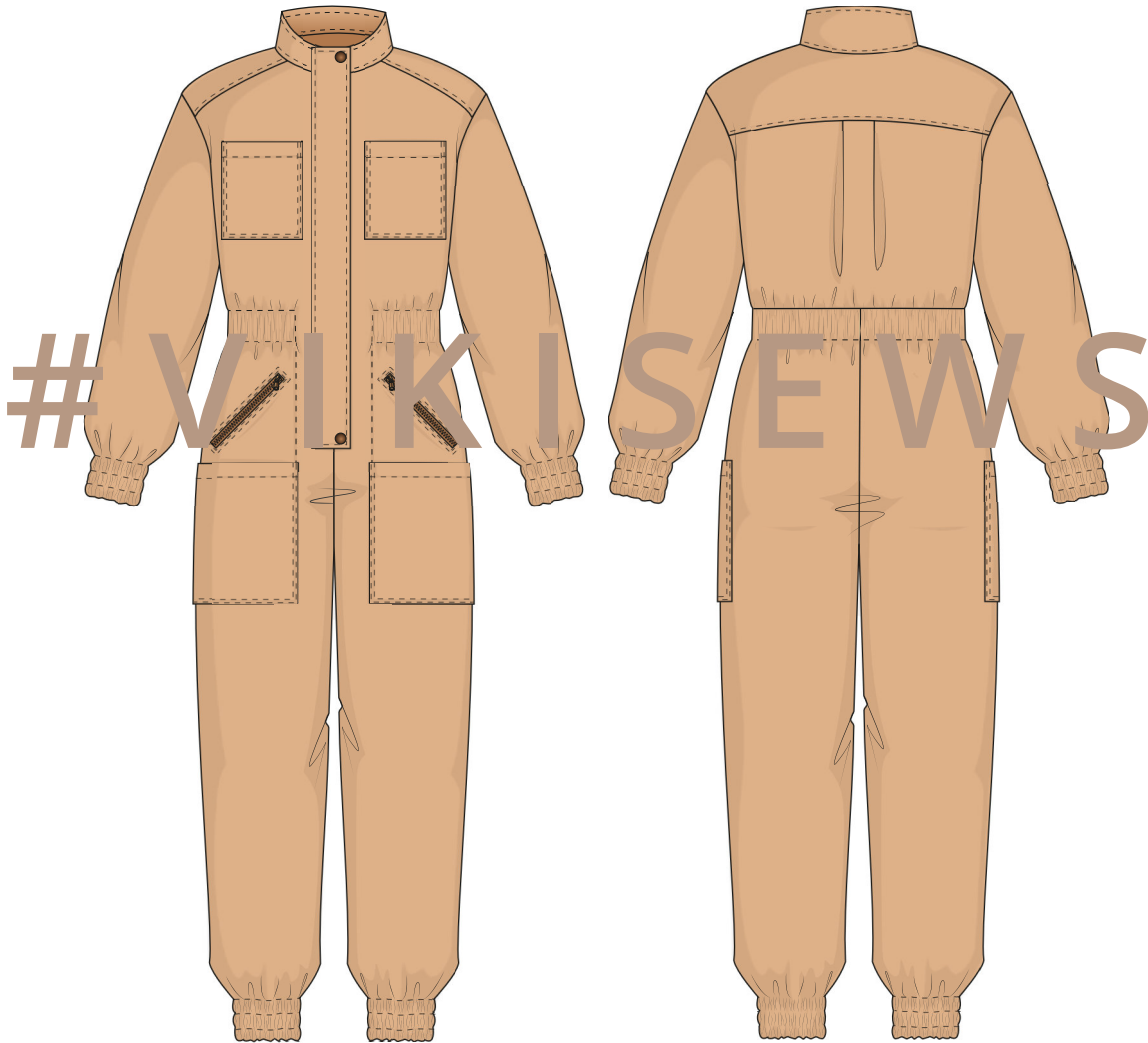


IRENE

(for girls)



3-14 years
HEIGHT 98-158 cm
(38.5"-62.25")

DIFFICULTY



ADVANCED

I M P O R T A N T !

The contents of this pattern are copyright protected and belong exclusively to Vikisews. You may use Vikisews patterns for personal use. It is prohibited to share Vikisews patterns and instructions with third parties, as well as to publish patterns and instructions online for public access. **Non-compliance with the mentioned rules is a violation of the US copyright law and may result in civil liability and criminal prosecution.**

You may use Vikisews patterns for commercial use, to sew custom-made garments and/or create fashion collections, on the condition that the patterns are solely used in a manufacturing setting and are not further shared with individuals.

I R E N E

#vikisews

PATTERN DESCRIPTION

Irene is a semi-fitted jumpsuit with a cinched waist. The front features patch pockets located at the bustline and hipline, as well as welt zipper pockets. The front and back feature yoke details, the back also has a box pleat below the yoke, and a waist seam. This jumpsuit has a wide casing with elastic at the waistline across the back and the front. Irene has a stand collar, and fastens with a center front zipper concealed with a placket. The placket closes with two set-in snap fasteners. Irene has a long set-in sleeve and the bottom of the sleeve and pants has three elastic casings. All the pockets, the placket, and the stand collar have decorative topstitching. Irene is ankle length.



TOTAL EASE ALLOWANCE

	Chest ease	Waistline ease	Hipline ease	Upper arm ease
Cm	20.3-21.4	18.7-27	9.7	10
Inches	8-8 3/8	7 3/8-10 5/8	3 7/8	3 7/8

GARMENT LENGTH, SLEEVE LENGTH

Height, cm	Length at side seam from waist down, cm (diff. for each size)	Sleeve length including shoulder width, cm
98	59.7-59.8	46.6-47.1
104	64.3-64.4	49.1-49.6
110	68.9-69	52.1-52.6
116	73.5	54.6-55.1
122	78.1	57.6-58.1
128	82.9-83.1	60.2-60.6
134	87.2-87.4	62.7-63.1
140	91.5-91.8	65.2-65.6
146	95.9-96.1	67.7-68.1
152	100.1-100.3	70-70.4
158	104.4	73.5-73.7

Height, in	Length at side seam from waist down, in (diff. for each size)	Sleeve length including shoulder width, in
38.5	23 1/2	18 3/8 - 18 1/2
41	25 3/8	19 3/8 - 19 1/2
43.25	27 1/8	20 1/2 - 20 3/4
45.5	28 7/8	21 1/2 - 21 3/4
48	30 3/4	22 5/8 - 22 7/8
50.5	32 5/8 - 32 3/4	23 3/4 - 23 7/8
52.75	34 3/8	24 5/8 - 24 7/8
55	36 - 36 1/8	25 5/8 - 25 7/8
57.5	37 3/8 - 39 1/2 41	26 5/8 - 26 3/4
60	39 1/8	27 1/2 - 27 3/4
62.25		28 7/8 - 29

FINISHED ELASTIC LENGTH AT BOTTOM OF SLEEVE

	Size 26	Size 28	Size 30	Size 32	Size 34	Size 36	Size 38	Size 40
Cm	14.8	15.2	16	16.4	16.8	17.2	17.6	18.5
Inches	5 7/8	6	6 1/4	6 1/2	6 5/8	6 3/4	6 7/8	7 1/4

FINISHED ELASTIC LENGTH AT BOTTOM OF PANT

	Size 26	Size 28	Size 30	Size 32	Size 34	Size 36	Size 38	Size 40
Cm	18.7	20.3	21.8	22.7	23.6	24.9	25.1	25.6
Inches	7 3/8	8	8 5/8	8 7/8	9 1/4	9 3/4	9 7/8	10 1/8

TOOLS AND EQUIPMENT

- Sewing machine for construction
- Overlocker for finishing raw edges. This may be replaced with a stretch overlock stitch or a zigzag stitch on the sewing machine (overlock or zigzag stitch width 2-3mm, stitch length 2.5mm)
- Stitch-in-the-ditch foot for your sewing machine (optional)

PATTERN PIECES LIST

1. From main fabric:

- Front - cut 2
- Back leg - cut 2
- Back bodice - cut 1 on fold
- Front yoke - cut 2
- Back yoke - cut 1 on fold
- Sleeve - cut 2
- Collar stand - cut 2
- Placket - cut 1
- Channel - cut 1 on fold
- Top patch pocket - cut 2
- Bottom patch pocket - cut 2
- Right front facing - cut 1
- Left front facing - cut 1

Additionally interface the following:

- Center front edges for the zipper (with a 2cm [3/4"] wide strip of interfacing cut along the selvedge)
- Top edges of top and bottom patch pockets (with a 2cm [3/4"] wide strip of interfacing cut along the selvedge)
- Front pocket openings (with a strip of interfacing cut along the selvedge, take length from pattern piece)

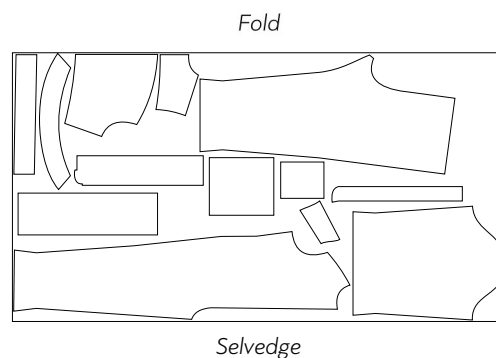
Also interface the top and bottom placket edges, and top and side edges on one collar stand piece, with tape interfacing strips (cut along the selvedge and stitched)

SEAM ALLOWANCES

All pattern pieces include 1cm (3/8") seam allowances; patch pockets top edges have a 2cm (3/4") seam allowance. Take this into account when laying out pattern pieces on the fabric.

CUTTING LAYOUT

Main fabric, 140cm (55") wide, with one fold, for sizes in 98cm (38.5") height, with nap and a directional print



Attention! The left and right front facing and the placket pieces are cut as one piece only.



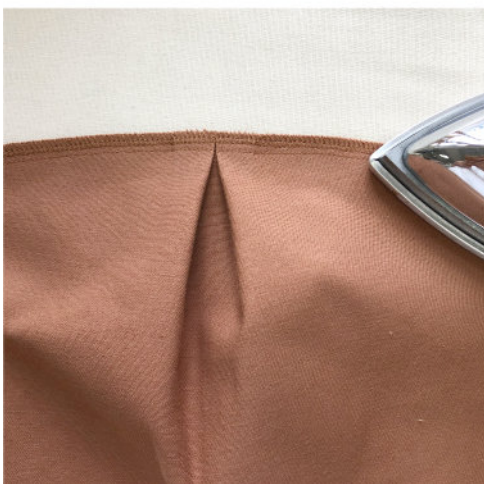
On the right side of the back piece, fold and pin the pleat.



Stitch the pleat on the machine at 5mm (3/16") from the edge.



Place the back yoke right sides together with the back piece, and align the yoke's bottom edge with the back's top edge. Pin, baste, and stitch on the machine. Backstitch at the beginning and end. Overlock the seam allowances with the back piece facing up.



Press the seam flat.