

# FROM THE FOUNDER OF THE #VIKISEWS BRAND

---

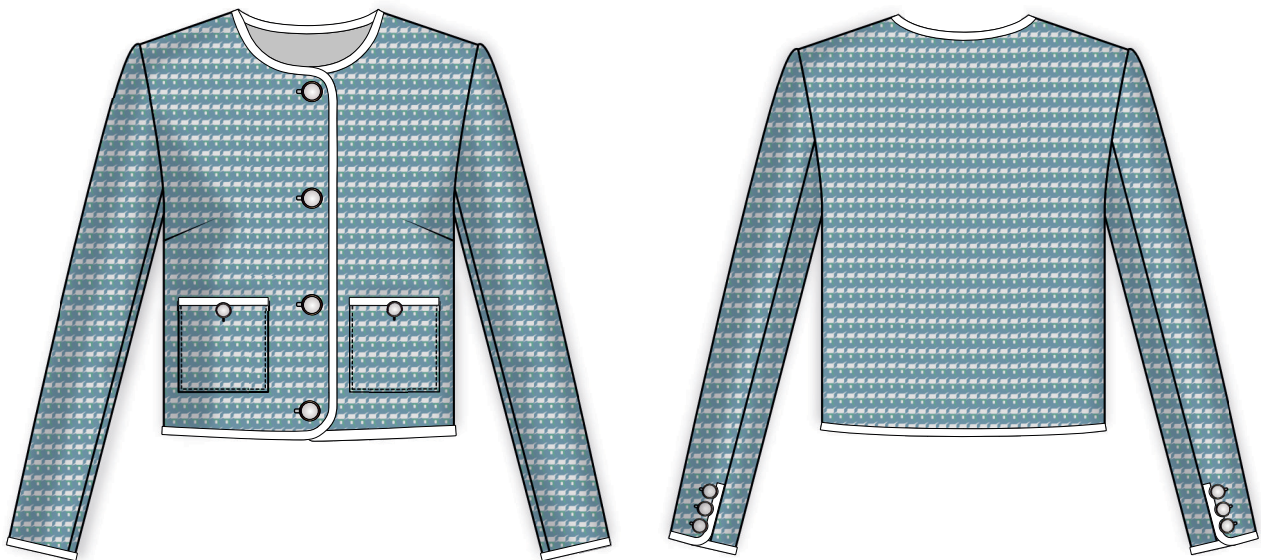


Back in 2016, when I was working on my first set of sewing instructions, I was trying to write them in such a way that even a complete beginner could easily understand and use them to create their very first garment. These instructions laid the foundation for the Vikisews brand, its vision and its mission. I wanted to create modern patterns with the utmost detailed and clear instructions.

Now, with each new collection we are constantly improving our instructions, amending them and adding more relevant details. By the time the final product reaches you, our drafters, correctors, and editors would have spent weeks perfecting every word and every photograph. If you compile a few of our instructions together, you will get a sewing manual that will assist you in sewing all kinds of garments at any difficulty level.

And I would be very happy if these instructions helped you to turn your hobby into a lifelong passion... Enjoy the process! Create your ultimate dream wardrobe! Wear your garments proudly for years to come!

If you have any questions, please contact us at [info@vikisews.com](mailto:info@vikisews.com) — we are always there to help.



## MERCY PATTERN DESCRIPTION

---

Mercy is a semi-fitted, fully lined jacket with a straight silhouette. It has front patch pockets and a round neckline. The set-in sleeves are long and semi-fitted. They feature elbow seam vents that close with buttons and buttonholes. All outer edges of the garment are finished with decorative crochet trim. The jacket has a single-breasted button and buttonhole closure and is below-waist length.



## IMPORTANT!

---

The contents of this pattern are copyright protected and belong exclusively to Vikisews. You may use Vikisews patterns for personal use. It is prohibited to share Vikisews patterns and instructions with third parties, as well as to publish patterns and instructions online for public access. **Non-compliance with the mentioned rules is a violation of the US copyright law and may result in civil liability and criminal prosecution.**

You may use Vikisews patterns for commercial use, to sew custom-made garments and/or create fashion collections, on the condition that the patterns are solely used in a manufacturing setting and are not further shared with individuals.

## TOTAL EASE ALLOWANCE

|        | Bust ease   | Waistline ease | Upper arm ease |
|--------|-------------|----------------|----------------|
| cm     | 16.8–18.3   | 36.9           | 7.6–8.7        |
| inches | 6 5/8–7 1/4 | 14 1/2         | 3–3 3/8        |

## GARMENT LENGTH, SLEEVE LENGTH

| Height, cm  | Back length, cm | Sleeve length, cm |
|-------------|-----------------|-------------------|
| 1 (154–160) | 46–48.8         | 59.2–60.7         |
| 2 (162–168) | 48.1–50.1       | 61.2–62.7         |
| 3 (170–176) | 51.1–52.9       | 63.1–64.6         |
| 4 (178–184) | 54.1–55.9       | 65.1–66.5         |

| Height, ft     | Back length, in | Sleeve length, in |
|----------------|-----------------|-------------------|
| 1 (5'1"–5'3")  | 18 1/8–19 1/4   | 23 1/4–23 7/8     |
| 2 (5'4"–5'6")  | 18 7/8–19 3/4   | 24 1/8–24 5/8     |
| 3 (5'7"–5'9")  | 20 1/8–20 7/8   | 24 7/8–25 3/8     |
| 4 (5'10"–6'1") | 21 1/4–22       | 25 5/8–26 1/8     |

## SUGGESTED FABRIC

To sew this jacket, choose soft, pliable suiting fabrics made of natural, artificial, synthetic fibers, or blends.

Recommended fabrics: bouclé, tweed, wool suiting, gabardine.

The jacket in the photos is made of tweed. The fabric is medium-weight, pliable, without stretch. The fiber content is a blend of cotton and polyester. The fabric weight is 350 g/m<sup>2</sup>. The lining is 100% viscose. The decorative crochet trim is made of 70% cotton and 30% silk.

# PATTERN PIECES LIST

---

## 1. From main fabric:

- front – cut 2
- back – cut 1 on fold
- top sleeve – cut 2
- bottom sleeve – cut 2
- pocket – cut 2.

**Attention!** Fully interface (block fuse) a big enough piece of the main fabric before cutting the pieces out of it (see page 13 for more information on interfacing).

**Important!** If you are using a patterned fabric, cut the pocket pieces last so that you can match the pattern with the front pieces.

## 2. From lining fabric:

- front lining – cut 2
- back lining – cut 1 on fold
- top sleeve lining – cut 2
- bottom sleeve lining – cut 2
- pocket – cut 2.

**IMPORTANT!** *Don't forget to transfer all pattern markings and notches onto the fabric.*

## 3. From interfacing:

- front – cut 2
- back – cut 1 on fold
- top sleeve – cut 2
- bottom sleeve – cut 2
- pocket – cut 2.

# SEAM ALLOWANCES

---

All pattern pieces include 1 cm (3/8") seam allowances. Take this into account when laying out pattern pieces on the fabric.

**Important!** Since the outer edges of the garment are finished with the decorative trim, the following edges do not include seam allowances:

- neckline and bottom edges on the back and back lining
- neckline, center front, and bottom edges on the front and front lining
- vent and bottom edges on the top sleeve and top sleeve lining
- bottom edge on the bottom sleeve and bottom sleeve lining
- upper edge on the pocket.



Machine-stitch the darts, backstitching at the side edge only. At the dart point, tie the thread ends into a knot and trim them down to 2 cm (3/4").

Press the seams flat.



Trim the dart seam allowances down to 1 cm (3/8").



Clip into the dart seam allowance that's closer to the bottom edge at 5 cm (2") from the dart point, stopping 2 mm short of the seam.