

# FROM THE FOUNDER OF THE #VIKISEWS BRAND

---



Back in 2016, when I was working on my first set of sewing instructions, I was trying to write them in such a way that even a complete beginner could easily understand and use them to create their very first garment. These instructions laid the foundation for the Vikisews brand, its vision and its mission. I wanted to create modern patterns with the most detailed and clear instructions.

Now, with each new collection we are constantly improving our instructions, amending them and adding more relevant details. By the time the final product reaches you, our drafters, correctors, and editors would have spent weeks perfecting every word and every photograph. If you compile a few of our instructions together, you will get a sewing manual that will assist you in sewing all kinds of garments at any difficulty level.

And I would be very happy if these instructions helped you to turn your hobby into a lifelong passion... Enjoy the process! Create your ultimate dream wardrobe! Wear your garments proudly for years to come!

If you have any questions, please contact us at [info@vikisews.com](mailto:info@vikisews.com) - we are always there to help.



## ETEL PATTERN DESCRIPTION

---

Etel is a semi-fitted dress with an accentuated waist. The two-piece front bodice has a wrap design. The back bodice features shoulder darts. The dress has gathers at the waist on the front and back of the bodice. Etel has a bias cut skirt with elastic at the waist. The back skirt is shaped with waist darts. The dress has an extended shoulder line. The shirt sleeves are long and semi-fitted. There is a slit at the bottom of the sleeve, which is finished with a continuous bound sleeve placket. The sleeve is gathered at the bottom edge, and is finished with a cuff with two buttons and buttonholes. The dress features a deep V-neckline and a detachable belt with a buckle. Etel is below mid-calf length.



## IMPORTANT!

---

The contents of this pattern are copyright protected and belong exclusively to Vikisews. You may use Vikisews patterns for personal use. It is prohibited to share Vikisews patterns and instructions with third parties, as well as to publish patterns and instructions online for public access. **Non-compliance with the mentioned rules is a violation of the US copyright law and may result in civil liability and criminal prosecution.**

You may use Vikisews patterns for commercial use, to sew custom-made garments and/or create fashion collections, on the condition that the patterns are solely used in a manufacturing setting and are not further shared with individuals.

# TOTAL EASE ALLOWANCE

	Bust ease	Waistline ease	Hipline ease	Upper arm ease
cm	18-18.8	9	10.9	7.5-11.5
inches	7 1/8-7 3/8	3 1/2	4 1/4	3-4 1/2

# GARMENT LENGTH, SLEEVE LENGTH

Height, cm	Back length from waist down, cm	Sleeve length including shoulder width and cuff, cm
1 (154-160)	78	69.6-73.1
2 (162-168)	81	71.6-75.1
3 (170-176)	84	73.6-77.1
4 (178-184)	87	75.6-79.1

Height, ft	Back length from waist down, in	Sleeve length including shoulder width and cuff, in
1 (5'1" - 5'3")	30 3/4	27 3/8-28 3/4
2 (5'4" - 5'6")	31 7/8	28 1/4-29 5/8
3 (5'4" - 5'6")	33 1/8	29-30 3/8
4 (5'10" - 6'1")	34 1/4	29 3/4-31 1/8

# SUGGESTED FABRIC

To sew this dress, choose dress-weight fabrics with the following properties:

- medium-weight, pliable, breathable, soft, non-stretch or with little stretch, opaque
- the fabric content can include natural (wool, silk, cotton, linen), artificial (viscose), blends (wool + silk, wool + polyester, cotton + viscose, etc.), and synthetic fibers (polyester, polyester + elastane)
- the following dress-weight fabrics are recommended: natural silk, man-made silk, crepe sateen, satin, chiffon, lightweight viscose.

**Attention!** We do not recommend very stretchy knit materials (jersey fabric) and lightweight sheer fabrics (organza, stretch lace).

The dress in the photo is made in man-made silk. This fabric is medium-weight, pliable, soft, and has little stretch. The fiber content is 100% polyester.

# PATTERN PIECES LIST

---

## 1. From main fabric:

- back bodice - cut 1 on fold
- front bodice - cut 2
- back skirt - cut 1 on fold
- front skirt - cut 1 on fold
- sleeve - cut 2
- cuff - cut 2
- sleeve placket binding - cut 2
- back neck facing - cut 1 on fold
- front neck facing - cut 2
- belt - cut 1.

***IMPORTANT!** Don't forget to transfer all pattern markings and notches onto the fabric.*

## 2. From interfacing:

- belt - cut 1
- cuff - cut 2
- back neck facing - cut 1 on fold
- front neck facing - cut 2.

# SEAM ALLOWANCES

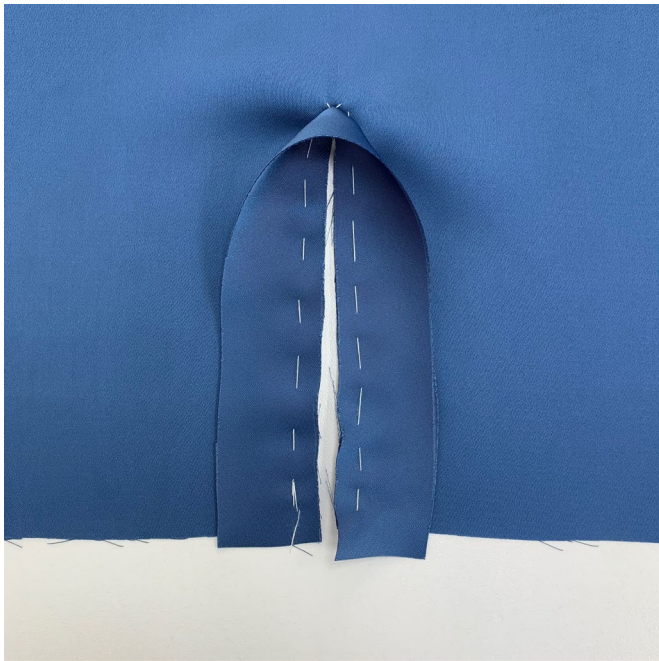
---

All pattern pieces include seam allowances as follows:

- top edge seam allowance on the front and back skirt pieces - 1.5 cm (5/8")
- bottom edge seam allowance on the front and back bodice pieces - 1.5 cm (5/8")
- all other seams - 1 cm (3/8").

Take this into account when laying out pattern pieces on the fabric.

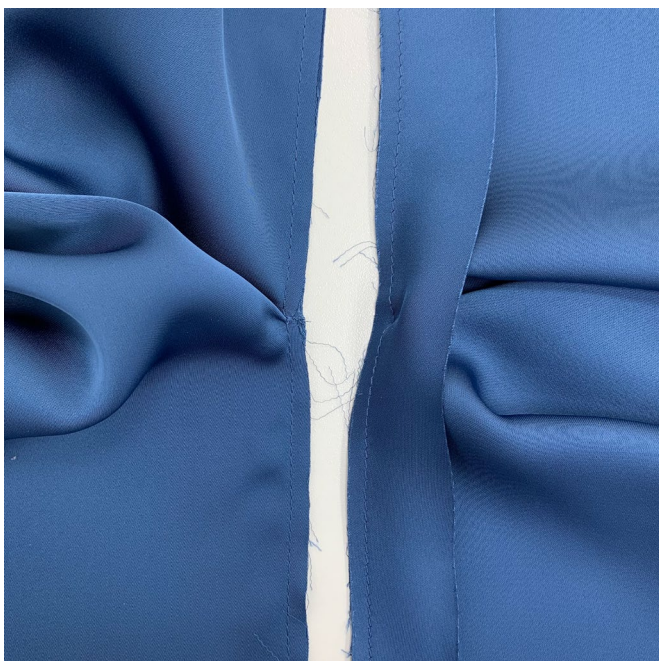




Finish the slits in the sleeves using sleeve placket binding. Cut into the slit using the markings on the pattern. Place the binding to the slit on the sleeve right sides together, and align the edges. Pin in place and baste.



Open out the sleeve slit into a straight line. Stitch on the sewing machine at 5 mm (just under 1/4") from the edge with the wrong side of the binding facing up.



By doing so, the stitching line goes along the slit of the sleeve at 5 mm (just under 1/4") from the edge, and at just 2 mm from the edge at the apex of the slit.