

FROM THE FOUNDER OF THE #VIKISEWS BRAND

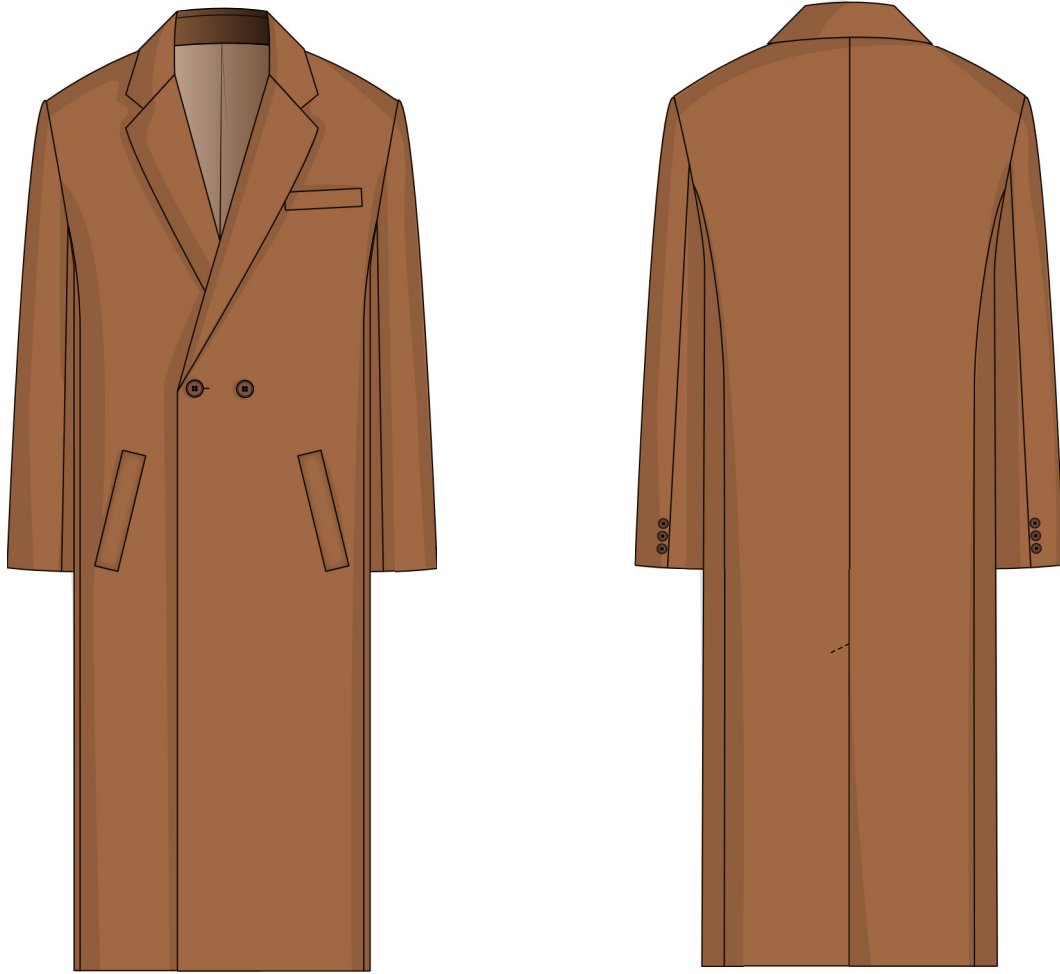


Back in 2016, when I was working on my first set of sewing instructions, I was trying to write them in such a way that even a complete beginner could easily understand and use them to create their very first garment. These instructions laid the foundation for the Vikisews brand, its vision and its mission. I wanted to create modern patterns with the most detailed and clear instructions.

Now, with each new collection we are constantly improving our instructions, amending them and adding more relevant details. By the time the final product reaches you, our drafters, correctors, and editors would have spent weeks perfecting every word and every photograph. If you compile a few of our instructions together, you will get a sewing manual that will assist you in sewing all kinds of garments at any difficulty level.

And I would be very happy if these instructions helped you to turn your hobby into a lifelong passion... Enjoy the process! Create your ultimate dream wardrobe! Wear your garments proudly for years to come!

If you have any questions, please contact us at info@vikisews.com - we are always there to help.



BERNARD PATTERN DESCRIPTION

Bernard is a men's semi-fitted double-breasted coat with a straight silhouette. The coat is designed to be worn in between seasons. The tailored fit is achieved by the side panels with princess seams on the front and back, and the center back seam. The front features two bottom welt pockets and a chest welt pocket on the left side. Long, set-in, two-piece sleeves have faux vents with three buttons on each. The jacket collar with a collar stand is paired with long lapels folded down to the waistline. The coat fastens with two buttons and buttonholes. The center back seam has a vent. The coat is fully-lined and is below-the-knee length.



IMPORTANT!

The contents of this pattern are copyright protected and belong exclusively to Vikisews. You may use Vikisews patterns for personal use. It is prohibited to share Vikisews patterns and instructions with third parties, as well as to publish patterns and instructions online for public access. **Non-compliance with the mentioned rules is a violation of the US copyright law and may result in civil liability and criminal prosecution.**

You may use Vikisews patterns for commercial use, to sew custom-made garments and/or create fashion collections, on the condition that the patterns are solely used in a manufacturing setting and are not further shared with individuals.

TOTAL EASE ALLOWANCE

	Chest ease	Waistline ease	Hipline ease	Upper arm ease
cm	24.8	33.4	24.6	10.8
inches	9 3/4	13 1/8	9 5/8	4 1/4

GARMENT LENGTH, SLEEVE LENGTH

Height, cm	Garment length at center back, cm	Sleeve length, cm	Height, ft	Garment length at center back, in	Sleeve length, in
1 (170-176)	120	65	1 (5'7"-5'9")	47 1/4	25 5/8
2 (178-184)	125	67	2 (5'10"-6')	49 1/4	26 3/8
3 (186-192)	130	69	3 (6'1"-6'3")	51 1/8	27 1/8
4 (194-200)	135	71	4 (6'4"-6'7")	53 1/8	28

SUGGESTED FABRIC

To sew the Bernard coat, choose coating fabrics with the following properties:

- heavyweight or medium weight, malleable, non-stretch or with very little stretch, opaque
- the fiber content can include natural fibers (wool, cashmere), artificial (viscose), blends (wool + cashmere, wool + polyester, etc.), and synthetic (polyester, polyester + elastane)
- the following fabrics are recommended: wool coating, cashmere, synthetic coating fabrics.

For the lining, we recommend artificial fibers (viscose), blended (viscose + elastane, viscose + polyester) or synthetic (polyester, polyester + elastane).

The garment in the photo is made of a wool coating fabric. This fabric is heavyweight and non-stretch. The fiber content is a blend of wool and cashmere. The fiber content of the lining is a blend of viscose and polyester.

4. 1 pair of shoulder pads
5. 1 pair of sleeve heads
6. 2 buttons, 2-2.5cm (3/4" - 1") in diameter (+1 spare button)
7. 6 buttons, 1.2cm (1/2") in diameter (+1 spare button)
8. 1 backing button, 1cm (3/8") in diameter, 1 backing button 2-2.5cm (3/4" - 1") in diameter
9. Thread matching the main fabric, 1 spool for the sewing machine
10. Thread matching the lining fabric, 1 spool for the sewing machine

TOOLS AND EQUIPMENT

- Sewing machine for construction
- Buttonhole foot for your sewing machine
- Stitch-in-the-ditch foot for your sewing machine (optional)

PATTERN PIECES LIST

IMPORTANT! Don't forget to transfer all pattern markings and notches onto the fabric.

1. From main fabric:

- front - cut 2
- back - cut 2
- side - cut 2
- top sleeve - cut 2
- bottom sleeve - cut 2
- upper collar - cut 1 on fold
- undercollar - cut 2
- collar stand - cut 2
- front facing - cut 2
- chest pocket welt - cut 1
- chest pocket facing - cut 1
- side pocket welt - cut 2
- side pocket facing - cut 2

2. From lining fabric:

- front lining - cut 2
- back lining - cut 2
- side lining - cut 2
- top sleeve lining - cut 2
- bottom sleeve lining - cut 2
- chest pocket top lining - cut 1
- chest pocket bottom lining - cut 1
- side pocket top lining - cut 2
- side pocket bottom lining - cut 2

3. From interfacing:

- front - cut 2
- back - cut 2
- side - cut 2
- top sleeve, partially (sleeve cap and sleeve bottom areas marked in the pattern) - cut 2
- bottom sleeve, partially (top and bottom areas of the bottom sleeve piece marked in the pattern) - cut 2
- upper collar - cut 1 on fold
- undercollar - cut 2
- collar stand - cut 2
- front facing - cut 2
- chest pocket welt - cut 1
- chest pocket facing - cut 1
- side pocket welt - cut 2
- side pocket facing - cut 2

Cut from interfacing as well:

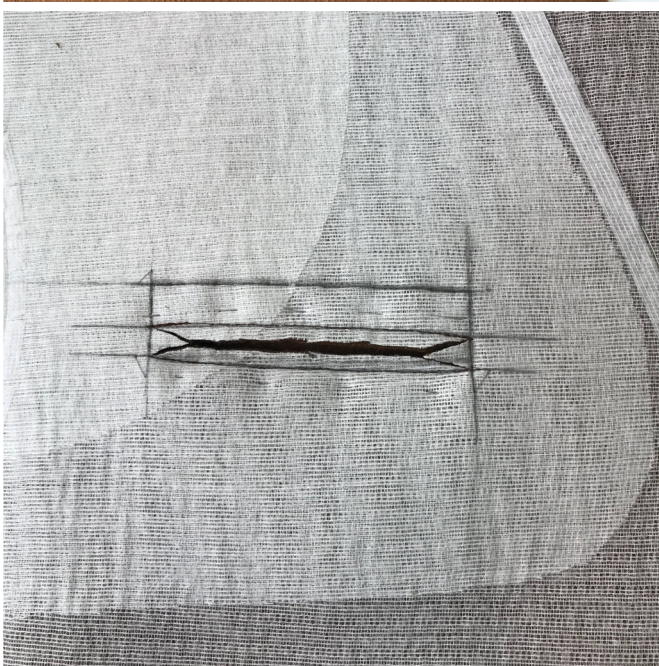
- 4 pieces (contoured in the pattern) to interface the front piece additionally with the second and third layers of the interfacing material
- 2 strips, 5.5cm (2 1/8") wide (length according to the pattern), to interface the side pocket areas



Fold the welt seam allowance toward the welt and pin. Place the pocket facing on top of the front piece, right sides together, match the seam allowances of the facing on the front and the pocket bag, stitch the pocket facing with the pocket bag. The stitching line of the facing must be 2mm shorter than that of the welt on each side. This will ensure that the finished welt will cover the facing seam completely.



Unpin the welt seam allowance. Put the right side of the pocket lining on top of the welt and baste. Attach the lining by stitching in the ditch of the welt seam. Stitch with the wrong side of the pocket lining piece facing up, backstitching at the beginning and end of the stitching line.



Mark the pocket frame on the wrong side, and cut the pocket opening stopping 1mm short of the corners.