

FROM THE FOUNDER OF THE #VIKISEWS BRAND

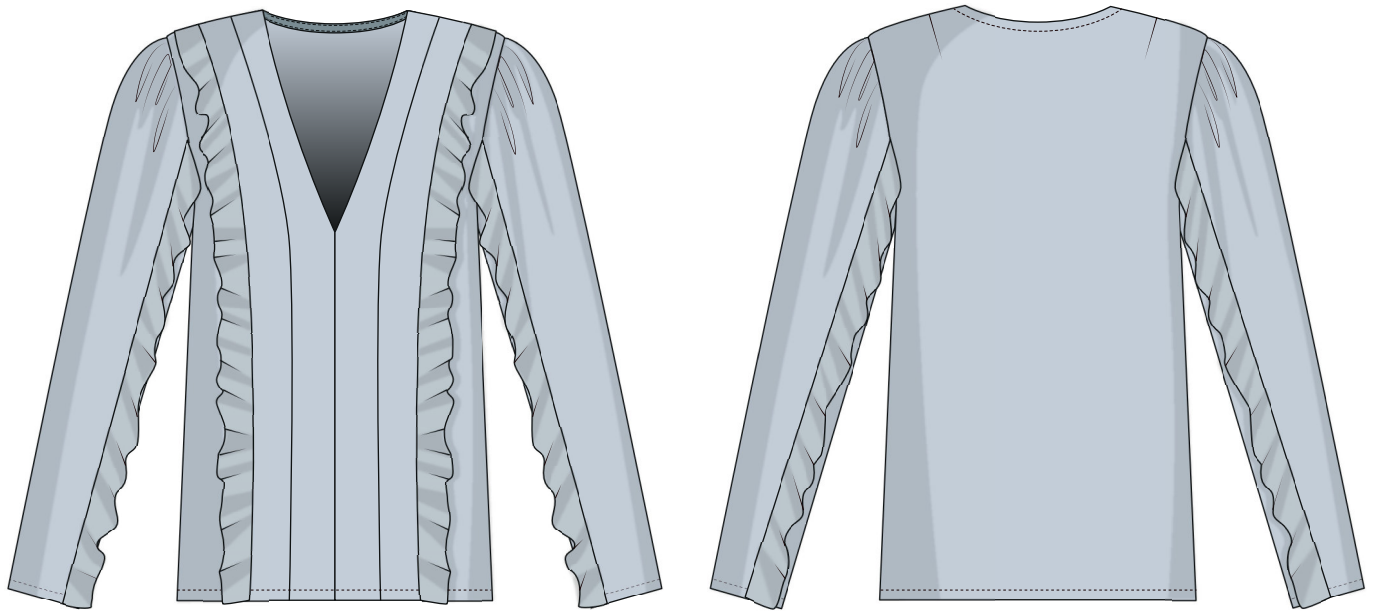


Back in 2016, when I was working on my first set of sewing instructions, I was trying to write them in such a way that even a complete beginner could easily understand and use them to create their very first garment. These instructions laid the foundation for the Vikisews brand, its vision and its mission. I wanted to create modern patterns with the most detailed and clear instructions.

Now, with each new collection we are constantly improving our instructions, amending them and adding more relevant details. By the time the final product reaches you, our drafters, correctors, and editors would have spent weeks perfecting every word and every photograph. If you compile a few of our instructions together, you will get a sewing manual that will assist you in sewing all kinds of garments at any difficulty level.

And I would be very happy if these instructions helped you to turn your hobby into a lifelong passion... Enjoy the process! Create your ultimate dream wardrobe! Wear your garments proudly for years to come!

If you have any questions, please contact us at info@vikisews.com - we are always there to help.



NORAH PATTERN DESCRIPTION

Norah is a semi-fitted blouse with a straight silhouette. The front features princess seams with gathered flounces. The blouse has long set-in sleeves gathered along the sleeve cap and a deep V-neckline. The three-piece sleeves also feature gathered flounces stitched into the seams. All the flounces are raw-edged. The blouse is mid-hip length.



IMPORTANT!

The contents of this pattern are copyright protected and belong exclusively to Vikisews. You may use Vikisews patterns for personal use. It is prohibited to share Vikisews patterns and instructions with third parties, as well as to publish patterns and instructions online for public access. **Non-compliance with the mentioned rules is a violation of the US copyright law and may result in civil liability and criminal prosecution.**

You may use Vikisews patterns for commercial use, to sew custom-made garments and/or create fashion collections, on the condition that the patterns are solely used in a manufacturing setting and are not further shared with individuals.

TOTAL EASE ALLOWANCE

	Bust ease	Waistline ease	Hipline ease	Upper arm ease
cm	13	35.1 - 35.4	12	10 - 11.4
inches	5 1/8	13 7/8	4 3/4	3 7/8 - 4 1/2

GARMENT LENGTH, SLEEVE LENGTH

Height, cm	Garment length at center back, cm	Sleeve length, cm	Height, ft	Garment length at center back, in	Sleeve length, in
1 (154-160)	56.9-58.8	57.7-58.8	1 (5'1" - 5'3")	22 3/8 - 23 1/8	22 3/4 - 23 1/8
2 (162-168)	59.6-61.5	59.6-61.3	2 (5'4" - 5'6")	23 1/2 - 24 1/4	23 1/2 - 24 1/8
3 (170-176)	62.7-64.6	61.5-63.2	3 (5'7" - 5'9")	24 5/8 - 25 3/8	24 1/4 - 24 7/8
4 (178-184)	65.9-67.5	63.4-65.1	4 (5'10" - 6'1")	26 - 26 5/8	25 - 25 5/8

SUGGESTED FABRIC

To sew this blouse, choose dress-weight woven fabrics with the following properties:

- Medium weight, with good drape, breathable, soft, non-stretch or with very little stretch, sheer or opaque
- The fiber content can include natural fibers (silk, cotton), artificial (viscose), blends (viscose + silk, viscose + polyester, cotton + viscose, etc.), and synthetic (polyester, polyester + elastane)
- The following fabrics are recommended: batiste, silk, atlas, crepe de chine, organza, chiffon

Attention! We do not recommend stretchy knit materials and heavyweight woven fabrics.

IMPORTANT! The color of the wrong side and the right side of the fabric must be practically the same.

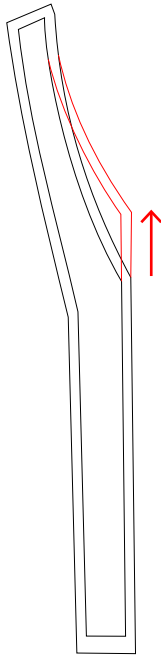
The blouse in the photo is made of crushed silk. This fabric is medium weight, has good drape, is soft and has very little stretch. The fiber content is a blend of silk and cotton.

PATTERN PIECES LIST

1. From main fabric:

- Back - cut 1 on fold
- Center front - cut 4
- Front - cut 2
- Side front - cut 2
- Center sleeve - cut 2

- Front sleeve - cut 2
- Back sleeve - cut 2
- Front flounce - cut 2
- Front sleeve flounce - cut 2
- Back sleeve flounce - cut 2
- Neckline binding - cut 1



Attention! The blouse has a deep V-shaped neckline. If you wish, you can raise it by adjusting the neckline on the center front piece.

To do this, extend the center seam line on the center front piece upwards, mark the new neckline point and draw a smooth line using a French curve (see the picture).

IMPORTANT! Don't forget to transfer all pattern markings and notches onto the fabric.

SEAM ALLOWANCES

All pattern pieces include seam allowances:

- 2cm (3/4") at the bottom of the garment
- 2cm (3/4") at the bottom of the sleeves
- 1cm (3/8") at all the other edges

Take this into account when laying out pattern pieces on the fabric.



Stitch the darts. Backstitch at the shoulder edge of the garment only. Press the seams flat.

Knot the loose thread ends at the dart apex and hide the tails in the dart bulk using a needle.

Press and steam the darts. Press out the bulge around the dart point on a tailor's ham. Press the dart towards the center.



Join the center front pieces in pairs along the center seam, right sides together. Align the edges, pin, baste, stitch on the sewing machine, backstitch at the beginning and end of the stitching line. Start stitching at 1cm (3/8") below the neckline edge.



Press the center seams of the center front pieces flat, then press the seam allowances open.