

# FROM THE FOUNDER OF THE #VIKISEWS BRAND

---



Back in 2016, when I was working on my first set of sewing instructions, I was trying to write them in such a way that even a complete beginner could easily understand and use them to create their very first garment. These instructions laid the foundation for the Vikisews brand, its vision and its mission. I wanted to create modern patterns with the most detailed and clear instructions.

Now, with each new collection we are constantly improving our instructions, amending them and adding more relevant details. By the time the final product reaches you, our drafters, correctors, and editors would have spent weeks perfecting every word and every photograph. If you compile a few of our instructions together, you will get a sewing manual that will assist you in sewing all kinds of garments at any difficulty level.

And I would be very happy if these instructions helped you to turn your hobby into a lifelong passion... Enjoy the process! Create your ultimate dream wardrobe! Wear your garments proudly for years to come!

If you have any questions, please contact us at [info@vikisews.com](mailto:info@vikisews.com) - we are always there to help.





## CHERYL PATTERN DESCRIPTION

---

Cheryl is an oversized quilted jacket with a straight cut. The front of the jacket features single welt pockets. Cheryl has long drop-shoulder sleeves finished with binding and a round neckline. The neckline, front edges and hem are finished with binding. The jacket closes in the front with sew-on snaps. It is lined, with the lining quilted together with the outer shell fabric. The jacket is below-hip length.





## IMPORTANT!

---

The contents of this pattern are copyright protected and belong exclusively to Vikisews. You may use Vikisews patterns for personal use. It is prohibited to share Vikisews patterns and instructions with third parties, as well as to publish patterns and instructions online for public access. **Non-compliance with the mentioned rules is a violation of the US copyright law and may result in civil liability and criminal prosecution.**

You may use Vikisews patterns for commercial use, to sew custom-made garments and/or create fashion collections, on the condition that the patterns are solely used in a manufacturing setting and are not further shared with individuals.



## TOTAL EASE ALLOWANCE

| Bust ease,<br>cm | Waistline ease,<br>cm | Hipline ease,<br>cm | Upper arm ease,<br>cm |
|------------------|-----------------------|---------------------|-----------------------|
| 44.8-56.8        | 65.3-77.4             | 38.5-50.5           | 22.2-26.4             |

## GARMENT LENGTH, SLEEVE LENGTH

| Height, cm  | Garment length at<br>center back, cm | Sleeve length including<br>shoulder width, cm |
|-------------|--------------------------------------|---|
| 1 (154-160) | 77                                   | 74.7-76.7                                     |
| 2 (162-168) | 80                                   | 76.7-78.7                                     |
| 3 (170-176) | 83                                   | 78.7-80.7                                     |
| 4 (178-184) | 86                                   | 80.7-82.7                                     |

## SUGGESTED FABRIC

To sew this jacket, choose fabrics with the following properties:

- light or medium-weight, non-stretch or with little stretch, wind- and water-resistant
- the fiber content can include natural fibers (cotton), artificial (acetate), blends (cotton + polyester, etc.) and synthetics (polyester, polyester + elastane)
- the following fabrics are recommended: water-resistant outerwear fabrics, gabardine, dewspo, taslan, membrane fabrics, taffeta, PU-coated polyester.

For the lining, use lining fabrics made from artificial fibers (viscose) or blends (viscose + polyester). For the insulation layer, use polyester batting, alpolux, isosoft 100 g/m<sup>2</sup>.

The jacket in the photos is made from medium-weight non-stretch outerwear material. The fabric is 100% polyester. The lining fabric is a viscose/polyester blend. The insulation layer is alpolux 100 g/m<sup>2</sup>.



# PATTERN PIECES LIST

## 1. From main fabric:

- front - cut 2
- back - cut 1
- sleeve - cut 2
- welt - cut 2
- pocket facing - cut 4
- sleeve hem binding - cut 2
- bias binding - cut 4

## 2. From lining:

- front - cut 2
- back - cut 1
- sleeve - cut 2
- pocket lining - cut 4

Also from the lining fabric, cut 4cm wide binding strips to finish seams.

## 3. From insulation:

- front - cut 2
- back - cut 1
- sleeve - cut 2
- welt - cut 2 (1/2 width)

**IMPORTANT!** Don't forget to transfer all the notches from the pattern to your fabric.

# SEAM ALLOWANCES

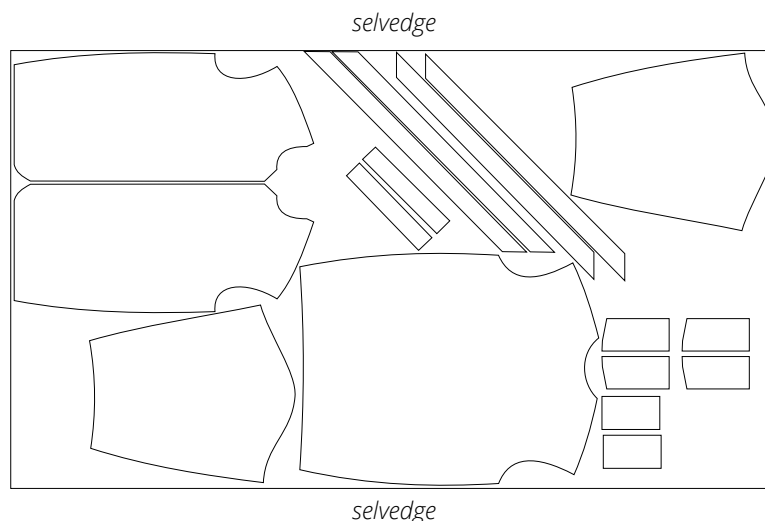
Pattern pieces include the following seam allowances:

- all edges, except front, back and sleeve hems - 1,5cm (extra wide seam allowance to be cut roughly and trimmed later)
- front, back and sleeve hems - 2cm (extra wide seam allowance to be cut roughly and trimmed later)
- all edges, except front, back and sleeve hems - 1cm (after trimming). Front, back and sleeve hems - no seam allowances after trimming.

Take this into account when laying out pattern pieces on the fabric.

# CUTTING LAYOUT

Main fabric, 140cm wide, single layer, sizes XS-S in all heights, with a directional print





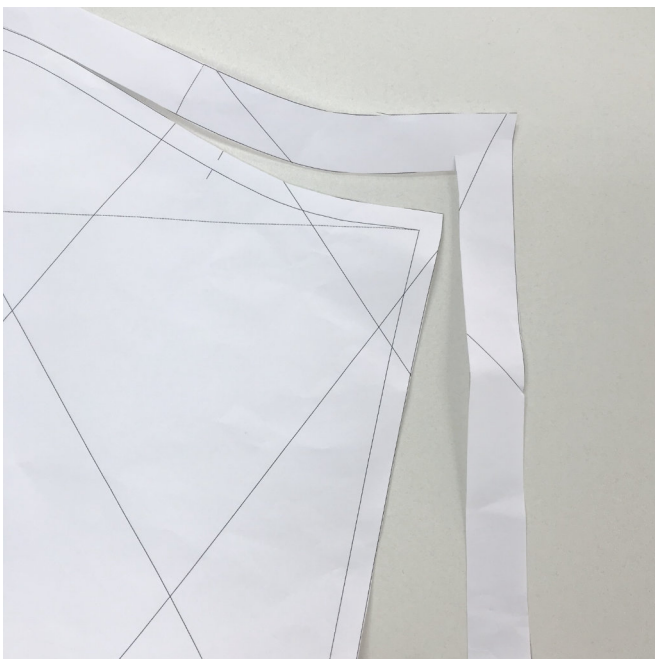


Pin all the layers together at the quilting line intersections and along the edges.

Baste along the traced quilting lines.



Stitch over all the quilting lines on the sewing machine. Use a 3,5-4mm stitch length.



Cut away the additional outer seam allowances on the paper pattern pieces.