

FROM THE FOUNDER OF THE #VIKISEWS BRAND



Back in 2016, when I was working on my first set of sewing instructions, I was trying to write them in such a way that even a complete beginner could easily understand and use them to create their very first garment. These instructions laid the foundation for the Vikisews brand, its vision and its mission. I wanted to create modern patterns with the most detailed and clear instructions.

Now, with each new collection we are constantly improving our instructions, amending them and adding more relevant details. By the time the final product reaches you, our drafters, correctors, and editors would have spent weeks perfecting every word and every photograph. If you compile a few of our instructions together, you will get a sewing manual that will assist you in sewing all kinds of garments at any difficulty level.

And I would be very happy if these instructions helped you to turn your hobby into a lifelong passion... Enjoy the process! Create your ultimate dream wardrobe! Wear your garments proudly for years to come!

If you have any questions, please contact us at info@vikisews.com - we are always there to help.



HILARY PATTERN DESCRIPTION

Hilary is a pair of close-fitting trousers with a straight silhouette. The front features angled decorative double-welt pockets on both sides. The back has waist darts and a horizontal functional welt pocket on the right. The top edge of the contour waistband sits on the natural waistline. The waistband has belt loops and fastens with a hook and eye. The trousers have a fly front zipper. The inseams have high slits at the bottom. The belt loops and slits feature decorative topstitching. Hilary is below-ankle length with allowance for the heel.



IMPORTANT!

The contents of this pattern are copyright protected and belong exclusively to Vikisews. You may use Vikisews patterns for personal use. It is prohibited to share Vikisews patterns and instructions with third parties, as well as to publish patterns and instructions online for public access. **Non-compliance with the mentioned rules is a violation of the US copyright law and may result in civil liability and criminal prosecution.**

You may use Vikisews patterns for commercial use, to sew custom-made garments and/or create fashion collections, on the condition that the patterns are solely used in a manufacturing setting and are not further shared with individuals.

TOTAL EASE ALLOWANCE

Waistline ease, cm

Hipline ease, cm

2.7-2.8

1.4-3.8

GARMENT LENGTH, CM

Height, cm

Side seam length including waistband, cm

1 (154-160)

106.6-108.6

2 (162-168)

110.9-112.9

3 (170-176)

115.2-117.1

4 (178-184)

119.5-121.4

FINISHED TROUSER HEM WIDTH, CM

Size

34

36

38

40

42

44

46

48

50

52

17.2

17.8

18.2

18.8

19.2

19.8

20.2

20.8

21.2

21.8

3. Lightweight fusible knit or woven interfacing, 140cm wide, for all sizes in all heights, in meters:

Size	34	36	38	40	42	44	46	48	50	52
Yardage	0.25	0.3	0.3	0.3	0.3	0.3	0.35	0.35	0.35	0.35

4. One 20cm pant zipper for all sizes in all heights

5. One sew-on pants hook and eye

6. Matching thread, 5 spools (1 spool for the sewing machine and 4 spools for the overlocker)

TOOLS AND EQUIPMENT

- Sewing machine for construction
- Overlocker for finishing raw edges. This may be replaced with a stretch overlock stitch or a zigzag stitch on the sewing machine (overlock or zigzag stitch width 2-3mm, stitch length 2.5mm)

PATTERN PIECES LIST

IMPORTANT! Don't forget to transfer all pattern notches onto the fabric.

1. From main fabric:

- Front leg - cut 2
- Back leg - cut 2
- Right waistband - cut 2
- Left waistband - cut 2
- Fly shield- cut 1
- Belt loops - cut 1
- Front pocket welt - cut 2
- Front pocket facing - cut 2
- Top back pocket welt - cut 1
- Bottom back pocket welt - cut 1
- Back pocket facing - cut 1

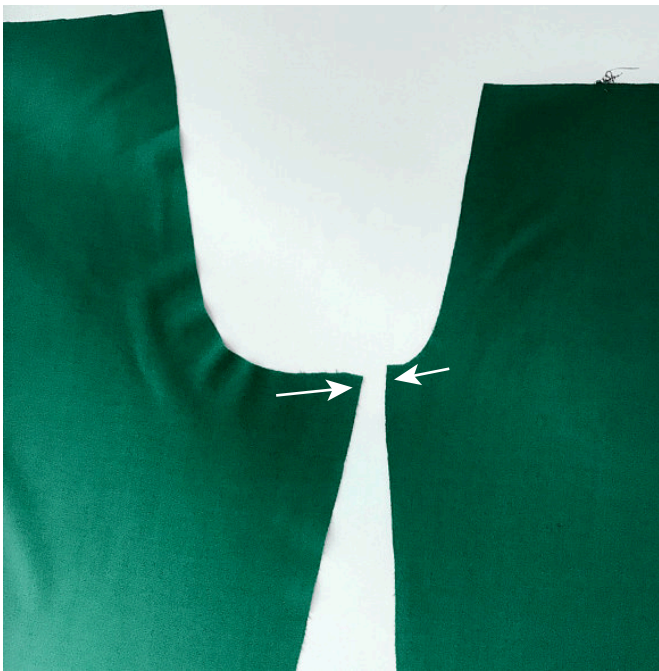
2. From lining fabric:

- Back pocket lining - cut 2
- Front pocket facing - cut 2

3. From interfacing:

- Right waistband - cut 2
- Left waistband - cut 2
- Front pocket welt - cut 2
- Top back pocket welt - cut 1
- Bottom back pocket welt - cut 1

Cut out 3 interfacing rectangular strips to interface the pockets (shape and size specified on the pattern pieces) and 4 interfacing strips, 1.5 cm wide, to interface the inseam slit seam allowances (length according to the pattern pieces). The interfacing grainline runs parallel to the long side (along the selvedge of the fusible material).



Stretch the lower (rounded) part of the crotch seam area a little by pulling its seam allowance slightly while pressing.

Steam and press the front leg as well — stretch the lower (rounded) part of the center front area, pulling the seam allowance slightly while pressing.

Steam and press each leg of the trousers separately, then put the back and front legs together and check for symmetry. They should be equal in size.



Serge one long edge of the bottom welt piece of the back pocket. Fold the pocket welts right side out, matching the notches, and press.



Put the back pocket lining piece to the right back leg, wrong sides together, aligning their top edges. Make sure the lining piece covers the interfacing strip entirely.

Pin or hand baste the lining piece.