

FROM THE FOUNDER OF THE #VIKISEWS BRAND

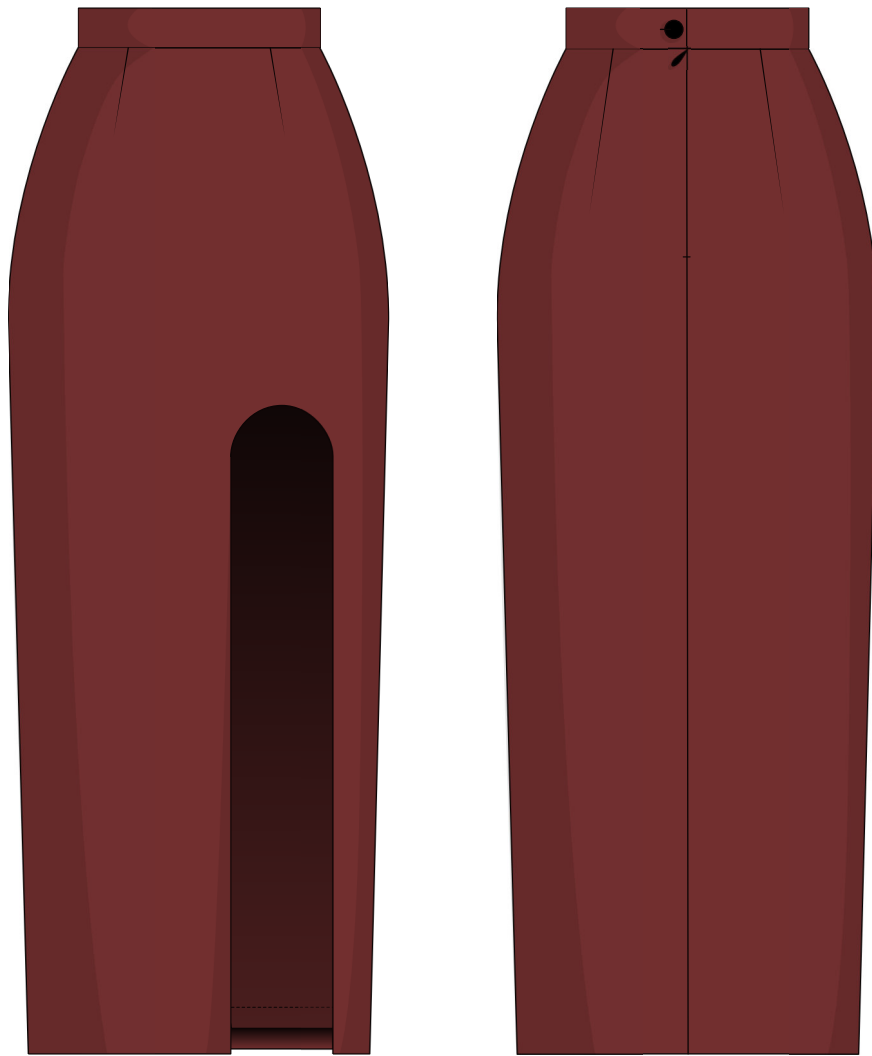


Back in 2016, when I was working on my first set of sewing instructions, I was trying to write them in such a way that even a complete beginner could easily understand and use them to create their very first garment. These instructions laid the foundation for the Vikisews brand, its vision and its mission. I wanted to create modern patterns with the most detailed and clear instructions.

Now, with each new collection we are constantly improving our instructions, amending them and adding more relevant details. By the time the final product reaches you, our drafters, correctors, and editors would have spent weeks perfecting every word and every photograph. If you compile a few of our instructions together, you will get a sewing manual that will assist you in sewing all kinds of garments at any difficulty level.

And I would be very happy if these instructions helped you to turn your hobby into a lifelong passion... Enjoy the process! Create your ultimate dream wardrobe! Wear your garments proudly for years to come!

If you have any questions, please contact us at info@vikisews.com - we are always there to help.



MALIKA PATTERN DESCRIPTION

Malika is a semi-fitted straight skirt. The skirt is shaped with front and back waist darts. The front features a shaped cutout. The skirt closes with an invisible zipper in the center back seam. The applied waistband closes with a button and buttonhole. The skirt is lined. Malika is below-knee length.



IMPORTANT!

The contents of this pattern are copyright protected and belong exclusively to Vikisews. You may use Vikisews patterns for personal use. It is prohibited to share Vikisews patterns and instructions with third parties, as well as to publish patterns and instructions online for public access. **Non-compliance with the mentioned rules is a violation of the US copyright law and may result in civil liability and criminal prosecution.**

You may use Vikisews patterns for commercial use, to sew custom-made garments and/or create fashion collections, on the condition that the patterns are solely used in a manufacturing setting and are not further shared with individuals.

TOTAL EASE ALLOWANCE

	Waistline ease	Hipline ease
cm	3	4
inches	1 1/8	1 5/8

GARMENT LENGTH

Height, cm	Garment length, cm	Height, ft	Garment length, in
1 (154-160)	83.5	1 (5'1" - 5'3")	32 7/8
2 (162-168)	87.5	2 (5'4" - 5'6")	34 1/2
3 (170-176)	91.5	3 (5'7" - 5'9")	36
4 (178-184)	95.5	4 (5'10" - 6'1")	37 5/8

SUGGESTED FABRIC

To sew this skirt, choose suiting fabrics with the following properties:

- medium-weight, soft, without stretch or with little stretch, opaque
- the fiber content can include natural fibers (wool, cotton), artificial fibers (viscose), blends (wool + silk, wool + polyester, cotton + viscose, etc.), and synthetics (polyester, polyester + elastane)
- the following fabrics are recommended: wool suiting, gabardine, faux leather, suede, silk velvet, fine wale corduroy.

Attention! We do not recommend stretchy knit materials (jersey fabrics) or lightweight sheer fabrics (chiffon, organza, stretch lace).

For the lining, the following fabrics are recommended: lining fabrics made from artificial fibers (viscose), blends (viscose + elastane, viscose + polyester), or synthetics (polyester, polyester + elastane).

The skirt in the photos is made from wool suiting. The fabric is medium-weight, pliable, soft, with little stretch. The fiber content is wool + cotton + polyester. The lining is 100% viscose.

PATTERN PIECES LIST

1. From main fabric:

- front - cut 1
- back - cut 2
- waistband - cut 1

2. From lining fabric:

- front lining - cut 1
- back lining - cut 2

Attention! When cutting, place all pieces on the right side of the fabric.

***IMPORTANT!** Don't forget to transfer all the notches from the pattern to your fabric.*

3. From interfacing:

- waistband - cut 1

Also from interfacing, cut 2 strips that are 1,5cm (5/8") wide and 20cm (7 7/8") long. These will be used to interface the zipper area seam allowances.

SEAM ALLOWANCES

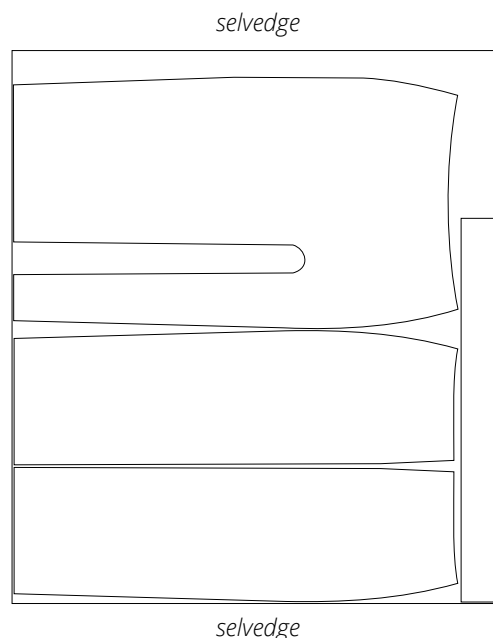
Pattern pieces include the following seam allowances:

- garment hem - 4cm (1 5/8")
- lining hem - 2cm (3/4")
- center back seam - 1,5cm (5/8")
- all other edges - 1cm (3/8")

Take this into account when laying out pattern pieces on the fabric.

CUTTING LAYOUT

Main fabric, 140-150cm (55-60") wide, cut on a single layer,
for all sizes and heights, for directional print or nap



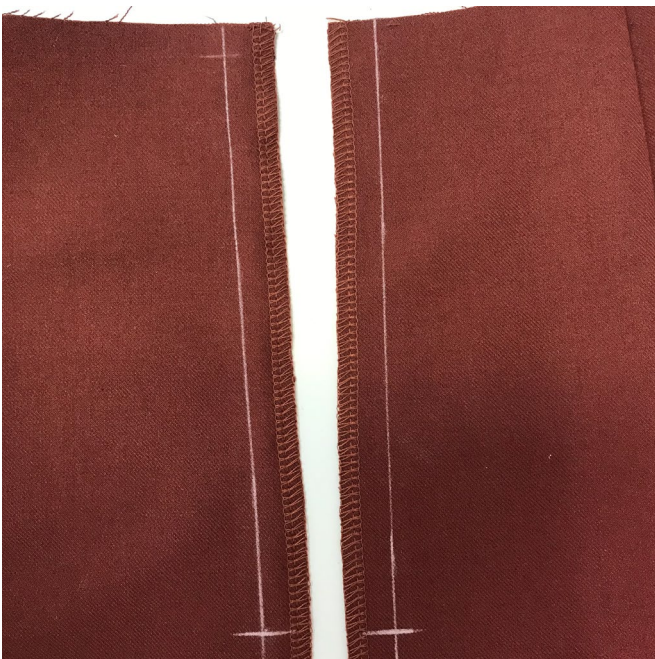


Machine-stitch the darts, backstitching at the upper edge of the garment only, press flat.



Tie the thread ends at the dart point and hide them between fabric layers using a needle.

Steam press the darts, shrink out the fullness at the dart point on a tailor's ham. Press the darts toward the center.



Mark the zipper stitching line on the right side of the back skirt pieces, 15mm (5/8") from the center back edge.