

FROM THE FOUNDER OF THE #VIKISEWS BRAND



Back in 2016, when I was working on my first set of sewing instructions, I was trying to write them in such a way that even a complete beginner could easily understand and use them to create their very first garment. These instructions laid the foundation for the Vikisews brand, its vision and its mission. I wanted to create modern patterns with the most detailed and clear instructions.

Now, with each new collection we are constantly improving our instructions, amending them and adding more relevant details. By the time the final product reaches you, our drafters, correctors, and editors would have spent weeks perfecting every word and every photograph. If you compile a few of our instructions together, you will get a sewing manual that will assist you in sewing all kinds of garments at any difficulty level.

And I would be very happy if these instructions helped you to turn your hobby into a lifelong passion... Enjoy the process! Create your ultimate dream wardrobe! Wear your garments proudly for years to come!

If you have any questions, please contact us at info@vikisews.com - we are always there to help.



CLARISSA PATTERN DESCRIPTION

Clarissa is a flared dress of moderate fulness, the close fit of its bodice is achieved by applying multiple rows of shirring. The semi-raglan sleeves are generously gathered along the sleeve caps into an elastic casing. The sleeves are long and voluminous and are gathered at the bottom with the help of an elastic casing stitched 6cm from the sleeve hem. Length of the dress is mid-calf.



IMPORTANT!

The contents of this pattern are copyright protected and belong exclusively to Vikisews. You may use Vikisews patterns for personal use. It is prohibited to share Vikisews patterns and instructions with third parties, as well as to publish patterns and instructions online for public access. **Non-compliance with the mentioned rules is a violation of the US copyright law and may result in civil liability and criminal prosecution.**

You may use Vikisews patterns for commercial use, to sew custom-made garments and/or create fashion collections, on the condition that the patterns are solely used in a manufacturing setting and are not further shared with individuals.

TOTAL EASE ALLOWANCE

Bust ease, cm	Waistline ease, cm	Hipline ease, cm	Upper arm ease, cm
0	66.8-87.7	45.1-66.5	36-44

GARMENT LENGTH, SLEEVE LENGTH

Height, cm	Garment length, cm	Sleeve length, cm
1 (154-160)	73	57.9-58.6
2 (162-168)	76	60-60.7
3 (170-176)	79	62-62.8
4 (178-184)	82	64-64.9

SUGGESTED FABRIC

To make this dress, choose dress weight fabrics with the following properties:

- Medium weight, with good drape, breathable, soft, non-stretch or with very little stretch, opaque
- The fiber content can include natural fibers (silk, cotton, linen), artificial (viscose), blends (cotton + viscose, etc.) and synthetic (polyester, polyester + elastane)
- The following fabrics are recommended: cotton fabric with some body, linen, shirting denim, double gauze, crinkle cotton

Attention! We do not recommend stretchy knit materials and lightweight sheer fabrics (chiffon, organza, stretch lace) for this dress.

The dress on the photo is made with dress/suiting weight linen. This fabric is medium weight, non-stretch and holds shape well. The fiber content is 100% linen.

TOOLS AND EQUIPMENT

- Sewing machine for construction
- Overlocker for finishing raw edges. This may be replaced with a stretch overlock stitch or a zigzag stitch on your sewing machine (overlock or zigzag stitch width 2-3mm, stitch length 2.5mm)
- Special sewing machine foot with ruler or stitch guide (optional)
- Bodkin or similar threading aid, or a safety pin for pulling elastic through a channel

PATTERN PIECES LIST

1. From main fabric:

- Front – cut 1 on fold
- Back – cut 1 on fold
- Sleeve – cut 2
- Top sleeve channel – cut 2
- Bottom sleeve channel – cut 2

***IMPORTANT!** Don't forget to transfer all pattern marks and notches to your fabric.*

SEAM ALLOWANCES

The pattern pieces are drafted to include the following seam allowances:

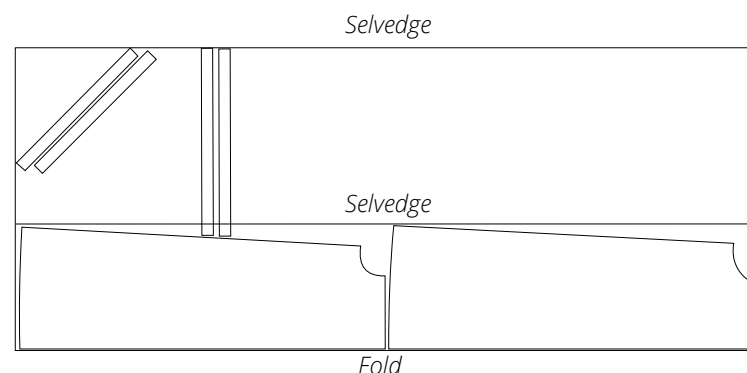
- Top of front and back pieces – 1.5 cm
- All the other edges – 1cm

Take this into consideration when positioning your pattern pieces on the fabric.

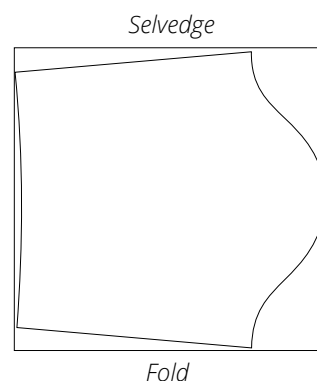
CUTTING LAYOUT

Main fabric, 130cm wide, for cutting in two stages, for size 34 in all heights, without directional print or nap

Stage 1, partially folded, fold created for front and back pieces only



Stage 2, folded



Attention! Top sleeve channel and bottom sleeve channel pieces are cut out in one layer out of the remaining fabric



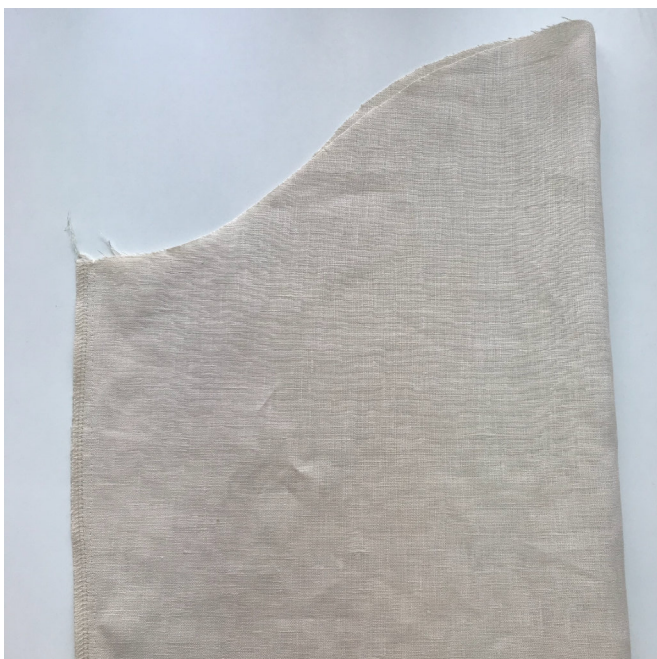
Tie the elastic threads into knots along the armhole.

Finish the side seams on an overlocker with the back of the dress facing up. Press the seams flat.

Press the side seam allowances toward the front.



Fold the sleeve pieces in half, right sides in, matching the raw edges and the notches. Pin, baste if needed and machine stitch, backstitching at the beginning and end of the seams.



Overlock the raw edges with the back of the sleeve facing up.

Press the seams flat.