

# FROM THE FOUNDER OF THE #VIKISEWS BRAND

---

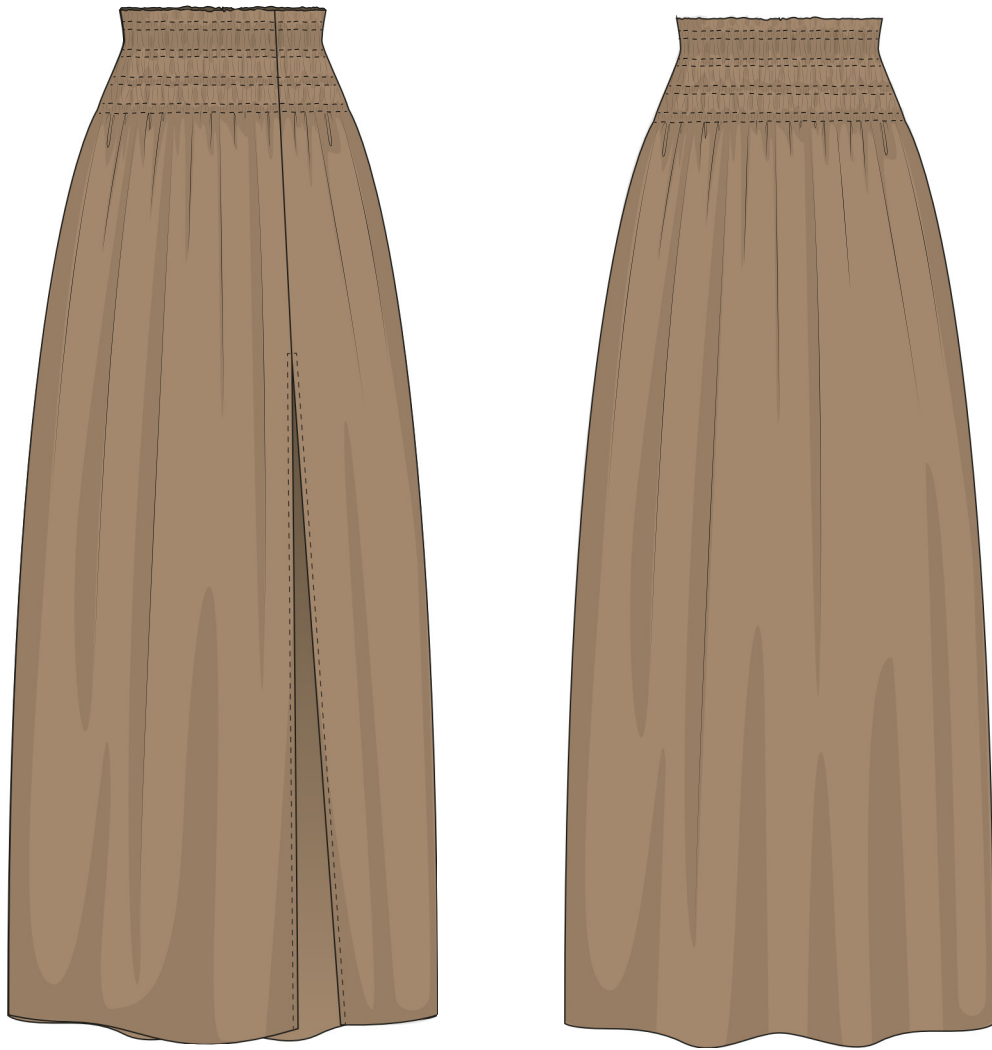


Back in 2016, when I was working on my first set of sewing instructions, I was trying to write them in such a way that even a complete beginner could easily understand and use them to create their very first garment. These instructions laid the foundation for the Vikisews brand, its vision and its mission. I wanted to create modern patterns with the most detailed and clear instructions.

Now, with each new collection we are constantly improving our instructions, amending them and adding more relevant details. By the time the final product reaches you, our drafters, correctors, and editors would have spent weeks perfecting every word and every photograph. If you compile a few of our instructions together, you will get a sewing manual that will assist you in sewing all kinds of garments at any difficulty level.

And I would be very happy if these instructions helped you to turn your hobby into a lifelong passion... Enjoy the process! Create your ultimate dream wardrobe! Wear your garments proudly for years to come!

If you have any questions, please contact us at [info@vikisews.com](mailto:info@vikisews.com) - we are always there to help.



## SIRENA PATTERN DESCRIPTION

---

Sirena is a full skirt with a trapeze silhouette. The upper edge of the skirt sits 3cm above the natural waistline. The front of the skirt consists of two panels and features a high hem slit on the left side. The upper part of the skirt is fitted with four double lines of elastic shirring. The skirt is ankle-length.



## IMPORTANT!

---

The contents of this pattern are copyright protected and belong exclusively to Vikisews. You may use Vikisews patterns for personal use. It is prohibited to share Vikisews patterns and instructions with third parties, as well as to publish patterns and instructions online for public access. **Non-compliance with the mentioned rules is a violation of the US copyright law and may result in civil liability and criminal prosecution.**

You may use Vikisews patterns for commercial use, to sew custom-made garments and/or create fashion collections, on the condition that the patterns are solely used in a manufacturing setting and are not further shared with individuals.

## TOTAL EASE ALLOWANCE

---

Waistline ease, cm	Hipline ease, cm
43	33

## GARMENT LENGTH

---

Height, cm	Garment length at the center back, cm
1 (154-160)	91
2 (162-168)	95
3 (170-176)	99
4 (178-184)	103

## SUGGESTED FABRIC

---

To sew this skirt, choose woven fabrics with the following properties:

- Medium weight, with good drape, breathable, soft, non-stretch or with very little stretch, opaque
- The fiber content can include natural fibers (silk, cotton, linen), artificial (viscose), blends (cotton + silk, cotton + viscose, etc.) and synthetics (polyester, polyester + elastane)
- The following fabrics are recommended: dress-weight linen, challis, cotton, silk, viscose

**Attention!** We do not recommend stretchy knit materials (jersey fabrics) or lightweight sheer fabrics (chiffon, organza, stretch lace).

The skirt in the photos is made with 100% linen. The fabric is medium-weight, soft, has good drape and very little stretch.

# TOOLS AND EQUIPMENT

---

- sewing machine for construction
- overlocker for finishing raw edges. This may be replaced with a stretch overlock stitch or a zigzag stitch on the sewing machine (overlock or zigzag stitch width 2-3mm, stitch length 2.5mm)
- edgestitch foot for your sewing machine (optional)

## PATTERN PIECES LIST

---

### 1. From main fabric:

- right front - cut 1
- left front - cut 1
- back - cut 1 on fold

### 2. From interfacing:

Cut 2 strips that are 2,5cm wide to interface the edges of the front slit. The strips should be cut on the straight grain (parallel to the selvedge).

***IMPORTANT!** Don't forget to transfer all the notches from the pattern to your fabric.*

## SEAM ALLOWANCES

---

Pattern pieces include the following seam allowances:

- skirt hemline - 3cm
- front slit edges - 2cm for linen and 1cm for cotton
- all other edges - 1cm

Take this into account when laying out pattern pieces on the fabric.

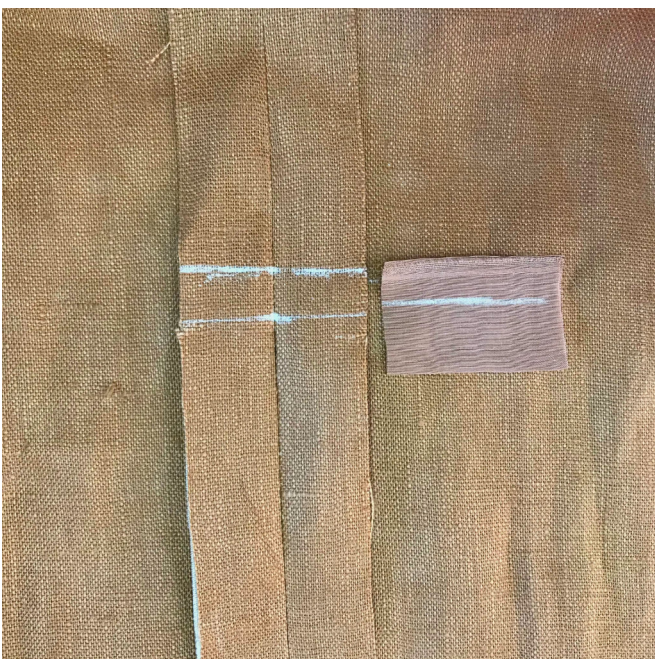




Place the right front and right left skirt pieces right sides together along the front seam. Match the notches. Pin and baste by hand if necessary. Stitch the upper part of the seam using a 2.5mm stitch length and backstitching at the beginning and end of the seam. With a 4mm stitch length, baste stitch the slit part of the seam. Do not backstitch.



Press the seam flat and then press the seam allowances open.



Reinforce the slit. Cut a 5x4cm rectangle out of lining fabric, press it in half along the shorter edge (straight grain). Mark two lines on the skirt seam allowances: the upper edge of the slit and the reinforcement line (1cm above the first line).