

FROM THE FOUNDER OF THE #VIKISEWS BRAND

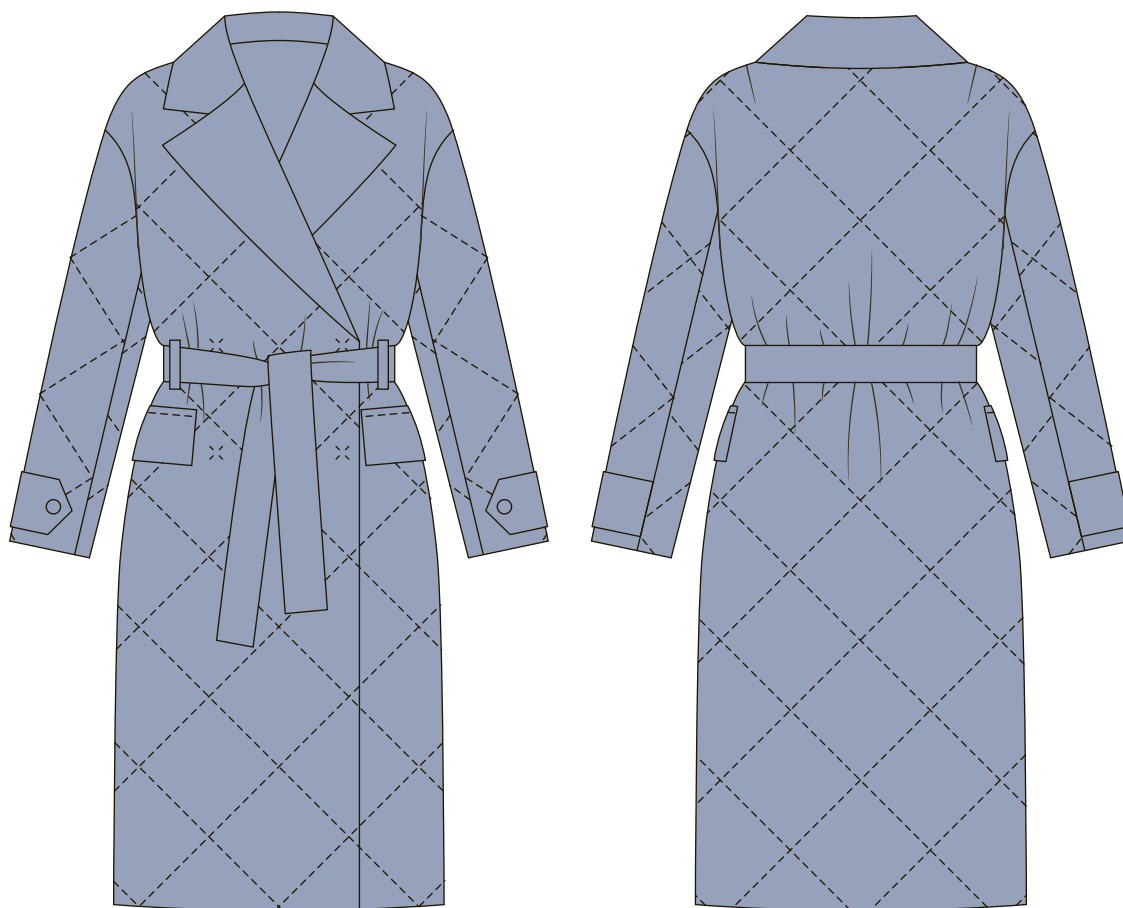


Back in 2016, when I was working on my first set of sewing instructions, I was trying to write them in such a way that even a complete beginner could easily understand and use them to create their very first garment. These instructions laid the foundation for the Vikisews brand, its vision and its mission. I wanted to create modern patterns with the utmost detailed and clear instructions.

Now, with each new collection we are constantly improving our instructions, amending them and adding more relevant details. By the time the final product reaches you, our drafters, correctors, and editors would have spent weeks perfecting every word and every photograph. If you compile a few of our instructions together, you will get a sewing manual that will assist you in sewing all kinds of garments at any difficulty level.

And I would be very happy if these instructions helped you to turn your hobby into a lifelong passion... Enjoy the process! Create your ultimate dream wardrobe! Wear your garments proudly for years to come!

If you have any questions, please contact us at info@vikisews.com — we are always there to help.



VILLANELLE PATTERN DESCRIPTION

Villanelle is a semi-fitted quilted double-breasted coat with a straight silhouette. It's made with raincoat fabric and insulated with Isosoft 200. Diamond-shaped quilting is done on the front, back, and sleeve pieces. The bust darts on the front as well as the shoulder darts on the back start at the shoulder seam. The welt pockets, located below the waist, are placed over the side seams. Flaps are topstitched above the welt and cover the pocket opening. The classic notched collar has a stand and rectangular shaped lapels. The coat has a dropped shoulder and set-in two-piece long sleeves decorated with a tab and button. Villanelle is cinched in at the waist with a tie belt which passes through two belt loops at the side seams. Villanelle fastens with sew-on snaps and is mid-calf length. The coat on the model is sewn with an asymmetrical quilted pattern on the front.



IMPORTANT!

The contents of this pattern are copyright protected and belong exclusively to Vikisews. You may use Vikisews patterns for personal use. It is prohibited to share Vikisews patterns and instructions with third parties, as well as to publish patterns and instructions online for public access. **Non-compliance with the mentioned rules is a violation of the US copyright law and may result in civil liability and criminal prosecution.**

You may use Vikisews patterns for commercial use, to sew custom-made garments and/or create fashion collections, on the condition that the patterns are solely used in a manufacturing setting and are not further shared with individuals.

TOTAL WEARING EASE

Bust ease, cm	Waistline ease, cm	Hipline ease, cm	Upper arm ease, cm
23,5	44,5	20	12-17

GARMENT LENGTH, SLEEVE LENGTH

Garment length is measured at center back.

Height, cm	Back length, cm	Sleeve length, cm
1 (154-160)	111	56
2 (162-168)	115	58
3 (170-176)	119	60
4 (178-184)	123	62

SUGGESTED FABRIC

To sew this coat, choose raincoat and outerwear fabrics with the following properties:

- Medium weight, flexible, breathable, soft, non-stretch, opaque
- The fiber content can include natural fibers (cotton), artificial (viscose), blends (cotton + polyester, etc.), and synthetic (polyester, polyester + elastane)
- The following fabrics are recommended: blended raincoat fabrics, Dewspo, tweed, taffeta, Taslan, and other water-repellent and water-resistant materials.

Attention! We do not recommend stretchy knit materials or lightweight sheer materials (chiffon, organza, stretch lace).

For the insulation material, we recommend Alpolux 200, Isosoft 200, Fibertech, hollow-fiber, Thinsulate, Primaloft, or pre-quilted insulated material.

For the lining, we recommend artificial fibers (viscose), blends (viscose + elastane, viscose + polyester), or synthetic fibers (polyester, polyester + elastane).

The coat on the photo is made with raincoat fabric. This material is medium weight and non-stretch. The fiber content is 100% polyester. The lining is 100% viscose.

4. Lightweight woven or knit fusible interfacing, 140cm wide, for all sizes and heights – 22-26cm.
5. 4 sew-on snaps 2cm in diameter.
6. 2 buttons for the tabs, 2.2-2.5cm in diameter.
7. Matching thread - 5 spools (1 spool for the sewing machine + 4 spools for the overlocker to finish the lining, optional).

TOOLS AND EQUIPMENT

- Sewing machine for construction
- Overlocker for finishing raw edges. This may be replaced with a stretch overlock stitch or a zigzag stitch on the sewing machine (overlock or zigzag stitch width 2-3mm, stitch length 2.5mm)
- Walking foot for your sewing machine (optional)

PATTERN PIECES LIST

1. From main fabric:

- Front – cut 2
- Back – cut 1
- Top sleeve – cut 2
- Bottom sleeve – cut 2
- Upper collar – cut 1
- Undercollar – cut 1
- Collar stand – cut 2
- Front facing – cut 2
- Back neck facing – cut 1
- Pocket flap – cut 4
- Top pocket bag – cut 2
- Pocket welt – cut 2
- Sleeve tab – cut 4
- Belt – cut 1
- Belt loop – cut 1

2. From insulating material:

- Front – cut 2
- Back – cut 1
- Top sleeve – cut 2
- Bottom sleeve – cut 2
- Collar – cut 2
- Collar stand – cut 2
- Front facing – cut 1
- Back neck facing – cut 1
- Pocket flap – cut 2
- Sleeve tab – cut 2
- Belt – cut 1

IMPORTANT!

Don't forget to transfer all pattern markings and notches onto the fabric.

3. From lining:

- Front lining – cut 2
- Back lining – cut 2
- Top sleeve lining – cut 2
- Bottom sleeve lining – cut 2
- Bottom pocket bag – cut 2

4. From interfacing:

- Welt – cut 2

You will also need to cut two 6cm wide strips of interfacing to reinforce the pocket opening seam allowances. The grainline on these strips is along the long edges (along the interfacing selvedge).



Remove the pattern piece and connect the lines with a ruler.



To make the Villanelle coat we used Isosoft 200 calendered insulating material. This material is soft, featherweight, with a smooth silky surface.



Place the main piece on the insulating material, wrong side down. Start pinning from the center outward, inserting pins at the intersections of the quilting lines. Do not stretch or put any tension on the main material; the diamonds should be nice and full.

Thread a fine needle with fine silk thread and hand baste along all the marked lines.