

# FROM THE FOUNDER OF THE #VIKISEWS BRAND

---



Back in 2016, when I was working on my first set of sewing instructions, I was trying to write them in such a way that even a complete beginner could easily understand and use them to create their very first garment. These instructions laid the foundation for the Vikisews brand, its vision and its mission. I wanted to create modern patterns with the most detailed and clear instructions.

Now, with each new collection we are constantly improving our instructions, amending them and adding more relevant details. By the time the final product reaches you, our drafters, correctors, and editors would have spent weeks perfecting every word and every photograph. If you compile a few of our instructions together, you will get a sewing manual that will assist you in sewing all kinds of garments at any difficulty level.

And I would be very happy if these instructions helped you to turn your hobby into a lifelong passion... Enjoy the process! Create your ultimate dream wardrobe! Wear your garments proudly for years to come!

If you have any questions, please contact us at [info@vikisews.com](mailto:info@vikisews.com) - we are always there to help.



## OONA PATTERN DESCRIPTION

---

Oona is a semi-fitted A-line dress. The front bodice is only partially attached to the skirt, creating cutout sides, with the skirt sitting above the natural waistline. The dress has a wide, deep V-neckline that features gathers and elastic threaded through channels. The back bodice is cropped and the lower edge of the front and back bodice has elasticated channels. The back skirt is not attached to the back bodice and has a gently curved waistline. The upper edge of the front and back skirt has ties attached to an elastic threaded through channels. The voluminous raglan sleeves have an elasticated hem. Oona is above ankle length.



## IMPORTANT!

---

The contents of this pattern are copyright protected and belong exclusively to Vikisews. You may use Vikisews patterns for personal use. It is prohibited to share Vikisews patterns and instructions with third parties, as well as to publish patterns and instructions online for public access. **Non-compliance with the mentioned rules is a violation of the US copyright law and may result in civil liability and criminal prosecution.**

You may use Vikisews patterns for commercial use, to sew custom-made garments and/or create fashion collections, on the condition that the patterns are solely used in a manufacturing setting and are not further shared with individuals.

## TOTAL EASE ALLOWANCE

Bust ease, cm	Waistline ease, cm	Hipline ease, cm	Upper arm ease, cm
53.7-58.6	47.3-50.3	38.5-38.6	32.4-33.7

## GARMENT LENGTH, SLEEVE LENGTH

Height, cm	Back length from waist down, cm	Sleeve length including shoulder width, cm
1 (154-160)	81	23.8-24.2
2 (162-168)	84	25.1-25.5
3 (170-176)	87	26.3-26.8
4 (178-184)	90	27.6-28.1

## SUGGESTED FABRIC

To sew this dress, choose shirting and dress-weight fabrics with the following properties:

- light to medium weight, structured, non-stretch
- the fabric content can include natural (silk, cotton, linen), artificial (viscose), blends (cotton + viscose, etc.), and synthetic fibers (polyester)
- the following fabrics are recommended: sateen, poplin, linen, eyelet, opaque cotton shirting, viscose

The dress on the photo is made in 100% eco-friendly cotton. This fabric is lightweight, soft, and non-stretch.

# PATTERN PIECES LIST

## 1. From main fabric:

- front bodice – cut 2
- back bodice – cut 1 on fold
- front skirt – cut 1 on fold
- back skirt – cut 1 on fold
- sleeve – cut 2
- front tie – cut 2
- back channel – cut 1 on fold
- back skirt channel – cut 1 on fold
- front skirt channel – cut 2

**IMPORTANT!** Don't forget to transfer all pattern markings and notches onto the fabric.

## SEAM ALLOWANCES

All pattern pieces include seam allowances as follows:

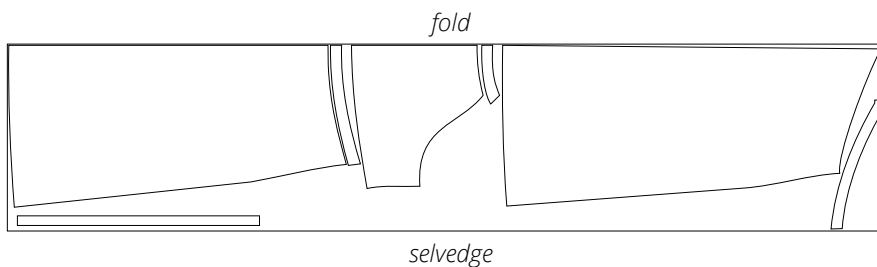
- garment hem allowance – 2cm
- all other seams – 1cm

Take this into account when laying out pattern pieces on the fabric.

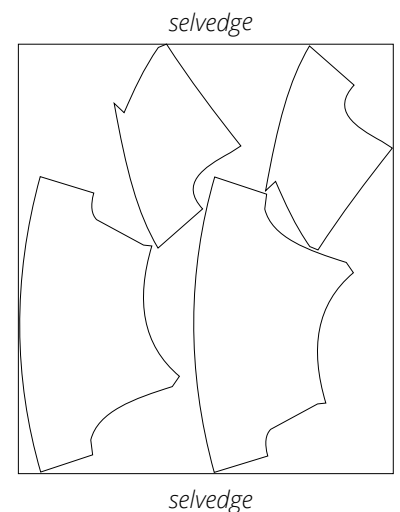
## CUTTING LAYOUT

Main fabric, 110cm wide, for cutting-out in two parts, for sizes 34-36 in all heights, with a directional print

1st part: folded



2nd part: single layer







Press the seam flat.



Press the seam allowance toward the back channel.



Trim the seam allowance down to 5mm.