

# FROM THE FOUNDER OF THE #VIKISEWS BRAND

---

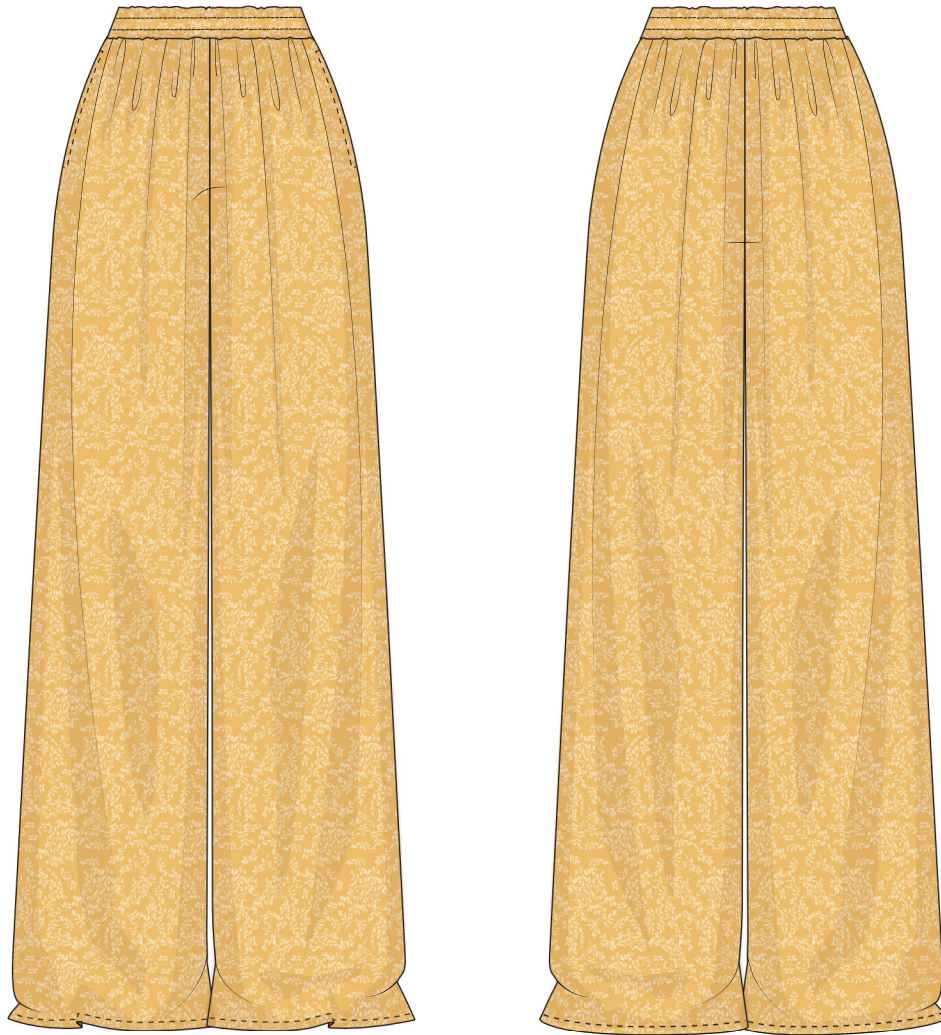


Back in 2016, when I was working on my first set of sewing instructions, I was trying to write them in such a way that even a complete beginner could easily understand and use them to create their very first garment. These instructions laid the foundation for the Vikisews brand, its vision and its mission. I wanted to create modern patterns with the most detailed and clear instructions.

Now, with each new collection we are constantly improving our instructions, amending them and adding more relevant details. By the time the final product reaches you, our drafters, correctors, and editors would have spent weeks perfecting every word and every photograph. If you compile a few of our instructions together, you will get a sewing manual that will assist you in sewing all kinds of garments at any difficulty level.

And I would be very happy if these instructions helped you to turn your hobby into a lifelong passion... Enjoy the process! Create your ultimate dream wardrobe! Wear your garments proudly for years to come!

If you have any questions, please contact us at [info@vikisews.com](mailto:info@vikisews.com) - we are always there to help.



## MARA PATTERN DESCRIPTION

---

Mara is a pair of voluminous pants with a straight silhouette. The side seams feature functional pockets. The wide waistband is elasticated. The elastic is secured inside the waistband by two rows of stitches. The upper edge of the waistband sits on the natural waist. The pants are below ankle length.



## IMPORTANT!

---

The contents of this pattern are copyright protected and belong exclusively to Vikisews. You may use Vikisews patterns for personal use. It is prohibited to share Vikisews patterns and instructions with third parties, as well as to publish patterns and instructions online for public access. **Non-compliance with the mentioned rules is a violation of the US copyright law and may result in civil liability and criminal prosecution.**

You may use Vikisews patterns for commercial use, to sew custom-made garments and/or create fashion collections, on the condition that the patterns are solely used in a manufacturing setting and are not further shared with individuals.

## TOTAL EASE ALLOWANCE

---

Waistline ease, cm	Hipline ease, cm
36.5-37	15.8-15.9

## GARMENT LENGTH AND WIDTH

---

Height, cm	Side seam length including waistband, cm	Circumference of the pant at the hemline, cm
1 (154-160)	105.4-106.9	66-84
2 (162-168)	109.7-111.2	66-84
3 (170-176)	114-115,5	66-84
4 (178-184)	118.3-119.8	66-84

## SUGGESTED FABRIC

---

To sew these pants, choose dress-weight fabrics with the following properties:

- light- to mid-weight, with good drape, breathable, fluid, light, soft, non-stretch or with little stretch, opaque
- the fabric content can include natural (silk, cotton, linen), artificial (viscose), blends (linen + silk, linen + cotton, cotton + viscose, etc.), and synthetic fibers (polyester)
- the following fabrics are recommended: dress-weight viscose, challis, natural silk, man-made silk, polyester.

**Attention!** We do not recommend very stretchy knit materials (jersey fabric) and lightweight sheer fabrics (chiffon, organza, stretch lace).

The pants on the photo are made in dress-weight fabric. This fabric is light, soft, non-stretch and has good drape. The fiber content is 100% polyester.

# PATTERN PIECES LIST

---

## 1. From main fabric:

- front leg – cut 2
- back leg – cut 2
- pocket bag – cut 4
- waistband – cut 1

**IMPORTANT!** Don't forget to transfer all pattern markings and notches onto the fabric.

Additionally, cut 2 fusible interfacing strips, 1.5 cm wide, to interface the seam allowances of the pocket opening. The grainline of the interfacing should be parallel to the longer side of the strips (along the selvedge of the interfacing). As an alternative, use straight fusible tape.

# SEAM ALLOWANCES

---

All pattern pieces include seam allowances as follows:

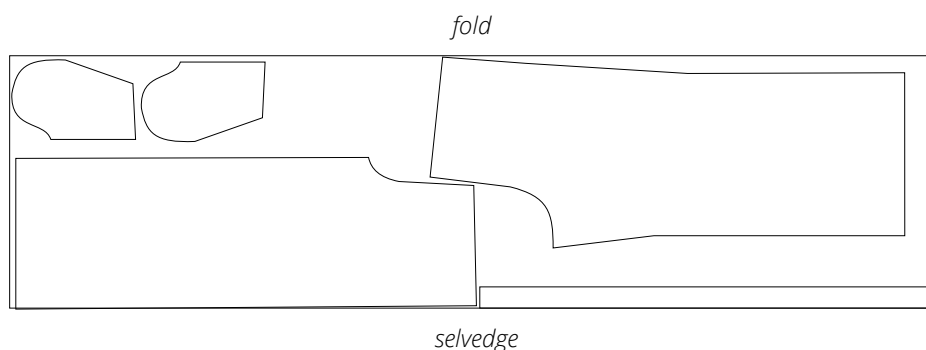
- garment hem allowance – 4cm
- all other seams – 1cm

Take this into account when laying out pattern pieces on the fabric.

# CUTTING LAYOUT

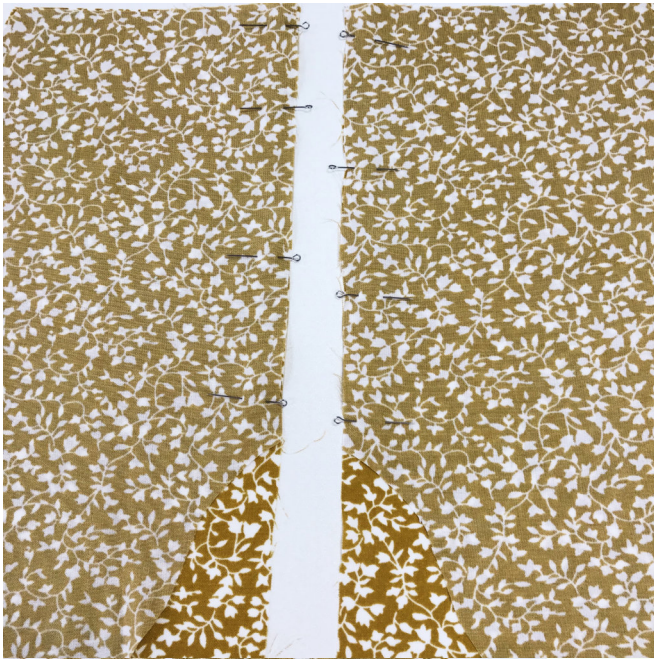
---

Main fabric, 130cm wide, folded, for sizes 34-40 in all heights;  
sizes 42-46 in height 3-4, with a non-directional print



**Important!** The waistband piece is cut from leftovers, on a single layer of fabric.





Place the pocket bag on top of the front leg, right sides together. Align the opening on the pocket bag with the side seam on the leg. Pin and baste.



Machine the pocket bag in place, starting and ending the stitching at the notches. Backstitch in the beginning and end.

Press the seam flat, and then press toward the pocket bag.

At the beginning and end of the stitching line, clip at 90 degrees, 1-2 mm from the stitching.



Turn the pocket bag to the wrong side of the front leg piece, and push out the seam allowances along the side seam. Press the pocket opening flat, while forming a 1 mm roll on the front side of the garment.

Baste along the pocket opening to secure the pocket bag.