

FROM THE FOUNDER OF THE #VIKISEWS BRAND

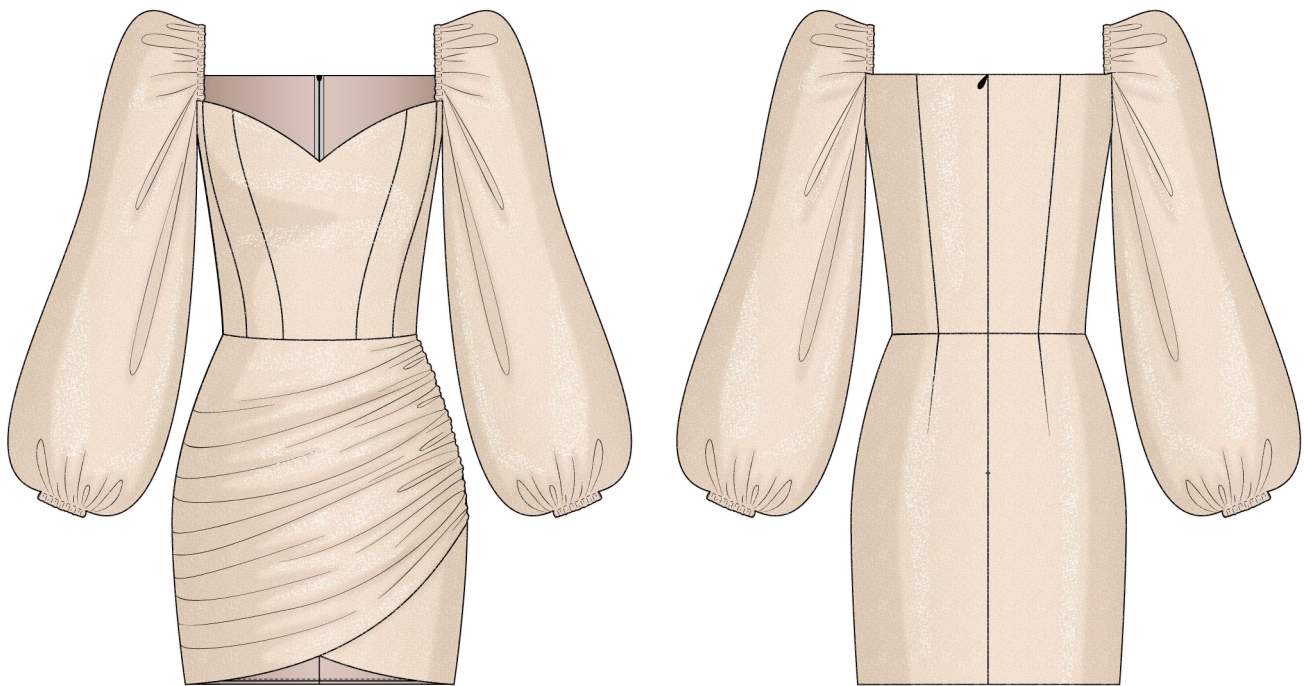


Back in 2016, when I was working on my first set of sewing instructions, I was trying to write them in such a way that even a complete beginner could easily understand and use them to create their very first garment. These instructions laid the foundation for the Vikisews brand, its vision and its mission. I wanted to create modern patterns with the utmost detailed and clear instructions.

Now, with each new collection we are constantly improving our instructions, amending them and adding more relevant details. By the time the final product reaches you, our drafters, correctors, and editors would have spent weeks perfecting every word and every photograph. If you compile a few of our instructions together, you will get a sewing manual that will assist you in sewing all kinds of garments at any difficulty level.

And I would be very happy if these instructions helped you to turn your hobby into a lifelong passion... Enjoy the process! Create your ultimate dream wardrobe! Wear your garments proudly for years to come!

If you have any questions, please contact us at info@vikisews.com — we are always there to help.



ANTONELLA PATTERN DESCRIPTION

Antonella is a close-fitting dress with a waist seam. The corset bodice of the dress features princess seams. The skirt has a wrap-style effect at the front that is achieved with a ruched overlay. The dress features a low shaped neckline. The set-in sleeves are long, loose-fitting, and flared towards the bottom. They have casings threaded with elastic at the top of the sleeve cap and at the hem. The dress is fully lined and closes with an invisible zipper in the center back seam. Antonella is above-knee length.



IMPORTANT!

The contents of this pattern are copyright protected and belong exclusively to Vikisews. You may use Vikisews patterns for personal use. It is prohibited to share Vikisews patterns and instructions with third parties, as well as to publish patterns and instructions online for public access. **Non-compliance with the mentioned rules is a violation of the US copyright law and may result in civil liability and criminal prosecution.**

You may use Vikisews patterns for commercial use, to sew custom-made garments and/or create fashion collections, on the condition that the patterns are solely used in a manufacturing setting and are not further shared with individuals.

TOTAL EASE ALLOWANCE

	Bust ease	Waistline ease	Hipline ease	Upper arm ease
cm	-1.9 to -2.4	1.4-1.8	2.2-2.3	34.4-35.6
inches	-3/4 to -1	1/2-3/4	7/8	13 1/2-14

GARMENT LENGTH, SLEEVE LENGTH

Height, cm	Back length from waist down, cm	Sleeve length including part of shoulder (estimated), cm
1 (154-160)	39.5-41.5	71.1-72.3
2 (162-168)	42.5-44.5	73.1-74.3
3 (170-176)	45.5-47.5	75.1-76.2
4 (178-184)	48.5-50.5	77.1-78.2

Height, ft	Back length from waist down, in	Sleeve length including part of shoulder (estimated), in
1 (5'1"-5'3")	15 1/2-16 3/8	28-28 1/2
2 (5'4"-5'6")	16 3/4-17 1/2	28 3/4-29 1/4
3 (5'7"-5'9")	17 7/8-18 3/4	29 5/8-30
4 (5'10"-6'1")	19 1/8-19 7/8	30 3/8-30 3/4

SUGGESTED FABRIC

To sew this dress, choose soft, pliable dress-weight fabrics made of natural, artificial, synthetic fibers, or blends.

The following fabrics are recommended: natural silk, artificial silk, satin.

The dress in the photo is made of silk. The fabric is medium weight, pliable, soft, and non-stretch. The fiber content is a blend of silk, polyester, and metallic thread. The fabric weight is 250 g/m².

PATTERN PIECES LIST

1. From main fabric:

- center front bodice* — cut 1 on fold
- mid front bodice* — cut 2
- side front bodice* — cut 2
- center back bodice* — cut 2
- side back bodice* — cut 2
- front skirt — cut 2
- right front skirt overlay — cut 1
- back skirt — cut 2
- sleeve — cut 2
- sleeve cap casing — cut 2

IMPORTANT! Interface (block fuse) a big enough piece of the main fabric prior to cutting the pieces marked with an asterisk (*). Interface in two steps: first the grainline of the interfacing should follow the grainline of the main fabric, then interface the main fabric following the cross grain.

2. From lining fabric:

- center front bodice lining — cut 1 on fold
- mid front bodice lining — cut 2
- side front bodice lining — cut 2
- center back bodice lining — cut 2
- side back bodice lining — cut 2
- front skirt — cut 2
- back skirt — cut 2

IMPORTANT! Don't forget to transfer all pattern markings and notches onto the fabric.

3. From interfacing:

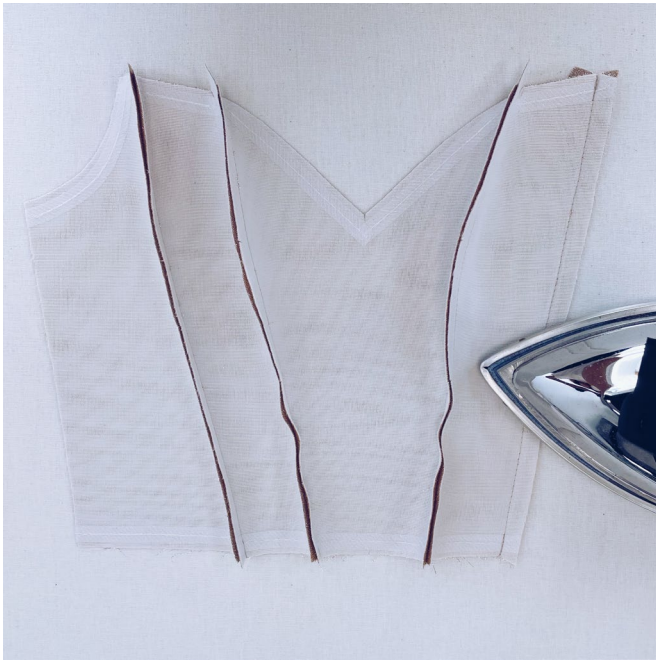
- center front bodice — cut 2 on fold
- mid front bodice — cut 4
- side front bodice — cut 4
- center back bodice — cut 4
- side back bodice — cut 4

SEAM ALLOWANCES

All pattern pieces include seam allowances as follows:

- center seam allowance on the center back bodice — 1.5 cm (5/8")
- center seam allowance on the back skirt — 1.5 cm (5/8")
- sleeve hem allowance — 2.5 cm (1")
- all other edges — 1 cm (3/8")

Take this into account when laying out pattern pieces on the fabric.



Press all the front bodice seams flat.



Clip into the curved sections of the seam allowances on the front bodice piece, stopping 2 mm short of the seam.



Press the seam allowances open on a tailor's board.