

FROM THE FOUNDER OF THE #VIKISEWS BRAND

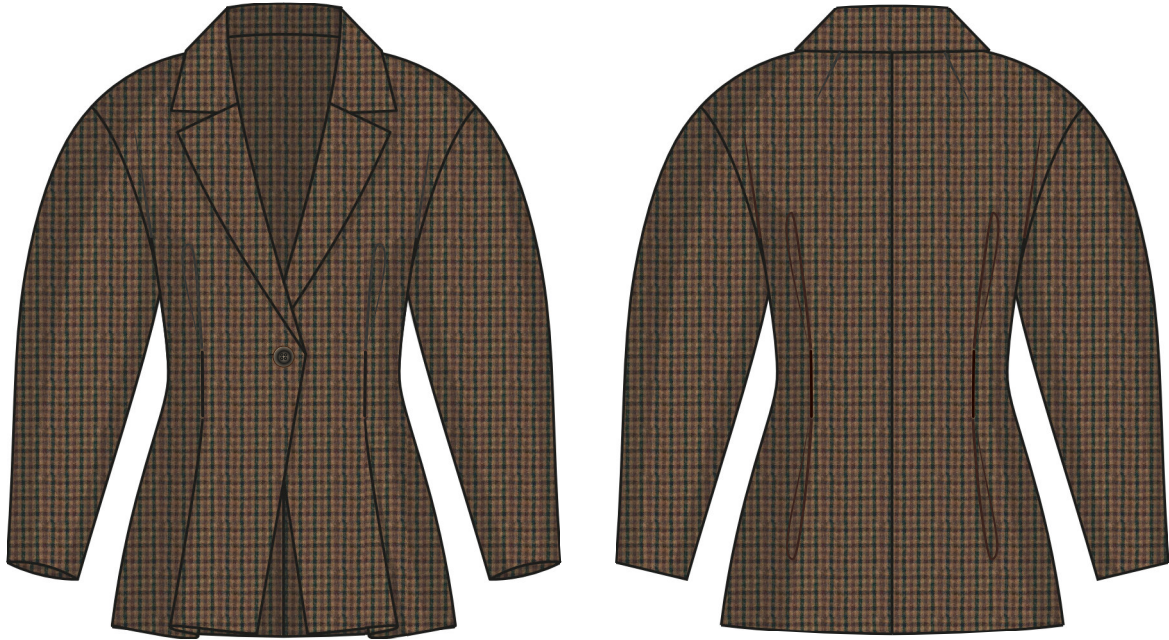


Back in 2016, when I was working on my first set of sewing instructions, I was trying to write them in such a way that even a complete beginner could easily understand and use them to create their very first garment. These instructions laid the foundation for the Vikisews brand, its vision and its mission. I wanted to create modern patterns with the utmost detailed and clear instructions.

Now, with each new collection we are constantly improving our instructions, amending them and adding more relevant details. By the time the final product reaches you, our drafters, correctors, and editors would have spent weeks perfecting every word and every photograph. If you compile a few of our instructions together, you will get a sewing manual that will assist you in sewing all kinds of garments at any difficulty level.

And I would be very happy if these instructions helped you to turn your hobby into a lifelong passion... Enjoy the process! Create your ultimate dream wardrobe! Wear your garments proudly for years to come!

If you have any questions, please contact us at info@vikisews.com — we are always there to help.



AVELINE PATTERN DESCRIPTION

Aveline is a semi-fitted blazer with an accentuated waist. The bust darts have been transferred to the neckline on the front bodice, and the shoulder darts have also been transferred to the neckline on the back bodice. The front and back feature dart pleats at the waistline, and the back has a center seam. The collar is a classic blazer notched lapel style, with a separate collar stand. The edges of the collar and the lapels are rectangular. Aveline fastens with one button and buttonhole, and the front flaps spread apart below the button. The blazer features a dropped shoulder and set in two-piece sleeves. The sleeve is of an unusual shape, with a convex curve on the outer seam. The blazer is neatly finished with a separate lining and is below the hip length.



IMPORTANT!

The contents of this pattern are copyright protected and belong exclusively to Vikisews. You may use Vikisews patterns for personal use. It is prohibited to share Vikisews patterns and instructions with third parties, as well as to publish patterns and instructions online for public access. **Non-compliance with the mentioned rules is a violation of the US copyright law and may result in civil liability and criminal prosecution.**

You may use Vikisews patterns for commercial use, to sew custom-made garments and/or create fashion collections, on the condition that the patterns are solely used in a manufacturing setting and are not further shared with individuals.

TOTAL WEARING EASE

Bust ease, cm	Waistline ease, cm	Hipline ease, cm	Upper arm ease, cm
19,3-19,8	10,2	27,2-27,9	14-16,5

GARMENT LENGTH, SLEEVE LENGTH

Garment length is measured along the center back seam, and sleeve length includes shoulder width

Height, cm	Garment length, cm	Sleeve length, cm
1 (154-160)	66,2	72,9-73,4
2 (162-168)	69,2	74,9-75,3
3 (170-176)	72,2	76,9-77,3
4 (178-184)	75,2	77,4-79,3

SUGGESTED FABRIC

To sew this blazer, choose woven fabrics with the following properties:

- Medium to heavy weight, structured, breathable, non-stretch or with very little stretch, opaque
- The fiber content can include natural fibers (wool, silk, cotton, linen), artificial (viscose), blends (wool + silk, wool + polyester, linen + viscose, etc), and synthetic (polyester, polyester + elastane)
- The following fabrics are recommended: wool suiting, gabardine, denim, heavy linen suiting

Attention! We do not recommend stretchy knit materials and lightweight sheer fabrics (chiffon, organza, stretch lace).

For the lining, we recommend artificial fibers (viscose), blends (viscose + elastane, viscose + polyester), or synthetic fibers (polyester, polyester + elastane).

The blazer on the photo is made with wool suiting. This material is medium weight, flexible, non-stretch. The fiber content is a blend of wool and elastane. The lining is 100% viscose.

PATTERN PIECES LIST

1. From main fabric:

- Front – cut 2
- Back – cut 2
- Front sleeve – cut 2
- Back sleeve – cut 2
- Undercollar – cut 2
- Upper collar – cut 1 on fold
- Collar stand – cut 2
- Lapel facing – cut 2
- Back neck facing – cut 1 on fold

2. From lining:

- Front lining – cut 2
- Back lining – cut 2
- Front sleeve lining – cut 2
- Back sleeve lining – cut 2

3. From interfacing:

- Front – cut 2
- Back – cut 2
- Front sleeve – cut 2
- Back sleeve – cut 2
- Upper collar – cut 1 on fold
- Undercollar – cut 2
- Collar stand – cut 2
- Lapel facing – cut 2
- Back neck facing – cut 1 on fold

IMPORTANT!

Don't forget to transfer all pattern markings and notches onto the fabric.

IMPORTANT!

All pattern pieces include 1cm seam allowances. The hem allowances for the garment and sleeves are 4cm. Take this into account when laying out pattern pieces on the fabric.



Place the front and back sleeve pieces right sides together, match all notches and pin. Stitch on the sewing machine, backstitch at the beginning and end.

If you're matching checks, you'll need to pin at the check lines. Insert pins perpendicular to the stitching line within the 1cm seam allowance. Stitch without removing the pins.



Press the seams flat, then press the seam allowances open using a seam roll.



Align the inner sleeve edges right sides together, matching all notches. Pin, stitch on the sewing machine, backstitch at the beginning and end. Press the seam flat, then press the seam allowances open.