

FROM THE FOUNDER OF THE #VIKISEWS BRAND



Back in 2016, when I was working on my first set of sewing instructions, I was trying to write them in such a way that even a complete beginner could easily understand and use them to create their very first garment. These instructions laid the foundation for the Vikisews brand, its vision and its mission. I wanted to create modern patterns with the utmost detailed and clear instructions.

Now, with each new collection we are constantly improving our instructions, amending them and adding more relevant details. By the time the final product reaches you, our drafters, correctors, and editors would have spent weeks perfecting every word and every photograph. If you compile a few of our instructions together, you will get a sewing manual that will assist you in sewing all kinds of garments at any difficulty level.

And I would be very happy if these instructions helped you to turn your hobby into a lifelong passion... Enjoy the process! Create your ultimate dream wardrobe! Wear your garments proudly for years to come!

If you have any questions, please contact us at info@vikisews.com — we are always there to help.



CECILE PATTERN DESCRIPTION

Cecile is a semi-fitted skirt with an asymmetrical cut. The skirt features a straight silhouette on the left side and a flared insert on the right. The insert is taking place of the right side seam and has identical style lines on the front and back. Cecile fastens with an invisible zip in the left side seam as well as a sewn-on hook and eye on the waistband. The skirt is fully lined and is below the knee length, with a longer curved hem in the insert area.



IMPORTANT!

The contents of this pattern are copyright protected and belong exclusively to Vikisews. You may use Vikisews patterns for personal use. It is prohibited to share Vikisews patterns and instructions with third parties, as well as to publish patterns and instructions online for public access. **Non-compliance with the mentioned rules is a violation of the US copyright law and may result in civil liability and criminal prosecution.**

You may use Vikisews patterns for commercial use, to sew custom-made garments and/or create fashion collections, on the condition that the patterns are solely used in a manufacturing setting and are not further shared with individuals.

TOTAL WEARING EASE

Waistline ease, cm	Hipline ease, cm
3-3,2	7,5-8,7

GARMENT LENGTH

Note: Garment length is measured at the back and includes the waistband width

Height, cm	Garment length, cm
1 (154-160)	76
2 (162-168)	79
3 (170-176)	82
4 (178-184)	85

SUGGESTED FABRIC

To sew this skirt, choose woven fabrics with the following properties:

- Medium weight, flexible, breathable, soft, non-stretch or with very little stretch, opaque;
- The fiber content can include natural fibers (wool, silk, cotton, linen), artificial (viscose), blends (wool + silk, wool + polyester, cotton + viscose, etc.), and synthetic (polyester, polyester + elastane);
- The following fabrics are recommended: dress-weight wool, gabardine, viscose crepe, silk velvet, silk, modal.

Attention! We do not recommend stretchy knit materials and lightweight sheer materials (chiffon, organza, stretch lace).

For the lining, we recommend artificial fibers (viscose), blends (viscose + elastane, viscose + polyester), or synthetic (polyester, polyester + elastane).

The skirt on the photo is made with dress-weight wool fabric. This fabric is medium weight, flexible, soft and has very little stretch. The fiber content is a blend of wool and elastane. The lining is 100% viscose.

PATTERN PIECES LIST

1. From main fabric:

- Front – cut 1
- Back – cut 1
- Side – cut 1
- Waistband – cut 1

2. From lining:

- Front lining – cut 1
- Back lining – cut 1

3. From interfacing:

- Waistband – cut 1

IMPORTANT!

Don't forget to transfer all pattern markings and notches onto the fabric.

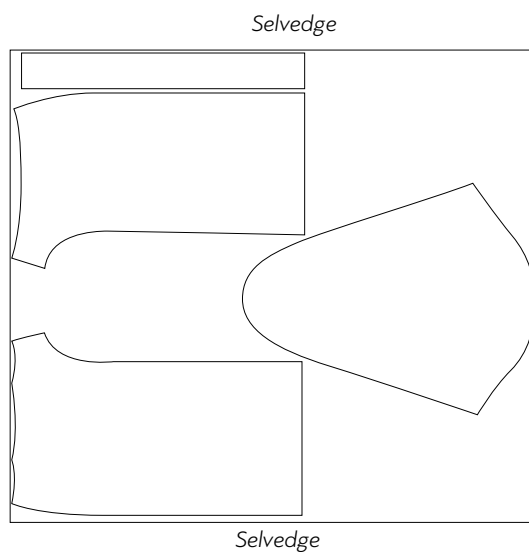
You will also need to cut two 1.5cm wide strips of interfacing to reinforce the invisible zipper seam allowances. The grainline on these strips is along the long side (along the interfacing selvedge).

SEAM ALLOWANCES

All pattern pieces include 1cm seam allowances, with the exception of the left side seam which is 1.5cm; the hem allowance is 3cm. Take this into account when laying out pattern pieces on the fabric.

CUTTING LAYOUTS

**Main fabric, 140cm wide, in one layer, for sizes 34-46 in all heights,
with nap and a directional print**





Press the dart allowances towards the center. Press out the excess at the dart points with the help of a tailor's ham.



Press down with a clapper or pressing mitt.



Overlock the side seam edges on the front and back pieces, as well as the bottom edge of the side piece, with the right side of each piece facing up.



Place the front and back pieces right sides together, align the left side seam and match all notches. Pin and stitch on the machine.