

# I M P O R T A N T !

The contents of this pattern are copyright protected and belong exclusively to Vikisews. You may use Vikisews patterns for personal use. It is prohibited to share Vikisews patterns and instructions with third parties, as well as to publish patterns and instructions online for public access. **Non-compliance with the mentioned rules is a violation of the US copyright law and may result in civil liability and criminal prosecution.**

You may use Vikisews patterns for commercial use, to sew custom-made garments and/or create fashion collections, on the condition that the patterns are solely used in a manufacturing setting and are not further shared with individuals.

# A R I A D N A

#vikisews

## PATTERN DESCRIPTION

*Ariadna is a double-breasted blazer with a straight silhouette and an oversized fit. It features side panels, the front has a welt pocket in the top left, the vertical darts transition into double welt pockets with flaps which continue over the side panels. The back features shoulder darts and the centre back seam ends with a vent. The shoulder line is extended. Ariadna has a classic blazer-style collar with a stand and a peak lapel, the front edges are rounded at the hem, and it fastens with one buttonhole and button. The blazer has a long set-in two-piece sleeve. It's fully finished with a lining and is below-the-hip length.*

*A special feature of the Ariadna blazer is that some visible edges are left raw, notably the collar and lapel, the front edges, the garment and sleeve hems.*



## TOTAL WEARING EASE

Bust ease, cm	Waistline ease, cm	Hipline ease, cm	Upper arm ease, cm
15,8-26,6	26,4-37	13,0-21,6	11,5-11,8

## GARMENT LENGTH, SLEEVE LENGTH

Height, cm	Garment length at center back, cm	Sleeve length, cm
1 (154-160)	69,6	60,5
2 (162-168)	72,6	62,5
3 (170-176)	75,6	64,5
4 (178-184)	78,6	66,5

## SUGGESTED FABRIC

To sew this blazer, choose woven fabrics with the following properties:

- Medium weight, flexible, breathable, soft, non-stretch or with very little stretch, opaque
- The fiber content can include natural fibers (wool, silk, cotton, linen), artificial (viscose), blends (wool + silk, wool + polyester, cotton + viscose, etc), and synthetic (polyester, polyester + elastane)
- The following fabrics are recommended: wool suiting, gabardine, melton wool

**Attention!** We do not recommend stretchy knit materials and lightweight sheer fabrics (chiffon, organza, stretch lace).

For the lining, we recommend artificial fibers (viscose), blends (viscose + elastane, viscose + polyester), or synthetic fibers (polyester, polyester + elastane).

The blazer on the photo is made with viscose suiting. This material is medium weight, flexible, soft, non-stretch. The fiber content is a blend of viscose and polyester. The lining is 100% viscose.

# FABRIC AND NOTIONS REQUIREMENTS

1. Main fabric, 140cm wide, in meters

Height, cm	Sizes 34-38	Sizes 40-46	Sizes 48-52
1 (154-160)	1,89	1,89	1,99
2 (162-168)	1,92	1,94	2,06
3 (170-176)	1,97	2,02	2,13
4 (178-184)	2,01	2,1	2,21

2. Lining fabric, 140cm wide, in meters

Height, cm	Sizes 34-38	Sizes 40-46	Sizes 48-52
1 (154-160)	1,37	1,41	1,54
2 (162-168)	1,41	1,45	1,59
3 (170-176)	1,47	1,5	1,64
4 (178-184)	1,52	1,55	1,68

3. Lightweight fusible woven interfacing, 140cm wide, in meters

Height, cm	Sizes 34-38	Sizes 40-46	Sizes 48-52
1 (154-160)	1,8	1,87	2,01
2 (162-168)	1,85	1,92	2,04
3 (170-176)	1,9	1,98	2,08
4 (178-184)	1,96	2,03	2,12

4. Fusible straight grain tape interfacing – 3-5m depending on size and height

5. Fusible web - 1.5-2m depending on size and height

6. One pair of shoulder pads

7. One pair of sleeve heads

8. One button 2.3-2.5cm in diameter

9. One transparent hidden backing button 2.3cm in diameter .

10. Matching thread, 1 spool

11. Matching topstitching thread, 1 spool

## IMPORTANT!

*When purchasing fabric, please account for shrinkage and buy 5% more than required.*

## TOOLS AND EQUIPMENT

- Sewing machine for construction
- Buttonhole foot for your sewing machine
- Stitch-in-the-ditch foot for your sewing machine (optional)

# PATTERN PIECES LIST

## 1. From main fabric:

- Front – cut 2
- Back – cut 2
- Side - cut 2
- Front facing - cut 2
- Top sleeve - cut 2
- Bottom sleeve - cut 2
- Sleeve hem facing - cut 2
- Undercollar - cut 2
- Upper collar – cut 1 on fold
- Collar stand – cut 2
- Chest pocket facing - cut 1
- Chest pocket welt - cut 1
- Side pocket facing - cut 2
- Side pocket top welt - cut 2
- Side pocket bottom welt - cut 2
- Side pocket top flap - cut 2
- Right hem facing - cut 1
- Left hem facing - cut 1

## 2. From lining:

- Front lining – cut 2
- Back lining - cut 2
- Side lining - cut 2
- Top sleeve lining - cut 2
- Bottom sleeve lining - cut 2
- Chest pocket top lining - cut 1
- Chest pocket bottom lining - cut 1
- Side pocket top lining - cut 2
- Side pocket bottom lining - cut 2
- Side pocket bottom flap - cut 2

## Additionally, cut the following out of interfacing:

- Additional layers of interfacing for the back and front pieces
- Interfacing pieces for the top part of the sleeve cap - cut 2
- Interfacing pieces for the bottom part of the sleeves - cut 2

The areas to interface are indicated on the pattern pieces. The grainline in the interfacing is the same as in the main fabric pieces.

## 3. From interfacing:

- Front – cut 2
- Side - cut 2
- Back – cut 2
- Front facing - cut 2
- Upper collar – cut 1 on fold
- Undercollar - cut 2
- Collar stand – cut 2
- Sleeve hem facing - cut 2
- Chest pocket facing - cut 1
- Chest pocket welt - cut 1
- Side pocket facing - cut 2
- Side pocket top welt - cut 2
- Side pocket bottom welt - cut 2
- Side pocket top flap - cut 2
- Right hem facing - cut 1
- Left hem facing - cut 1

## IMPORTANT!

*Don't forget to transfer all pattern markings and notches onto the fabric.*

# SEAM ALLOWANCES

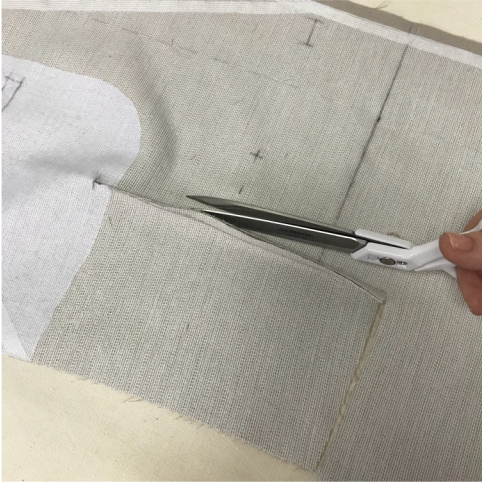
## Pattern pieces include the following allowances:

- pocket bags: 1.5cm
- collar edge, lapel and front edge, garment and sleeve hems: 0.5cm
- all other seams: 1 cm

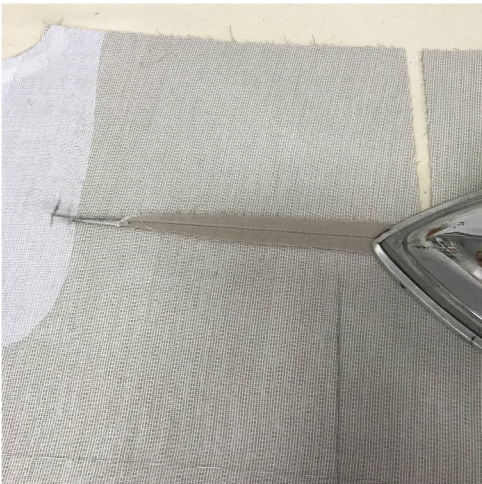
Take this into account when laying out pattern pieces on the fabric.



Press as sewn.



Cut the dart allowance open in the centre, stopping 2-3cm short of the tip.



Press the dart allowances open.



Match up the pocket opening edges on the front piece and fuse them together with a strip of tape interfacing from the wrong side.