

FROM THE FOUNDER OF THE #VIKISEWS BRAND

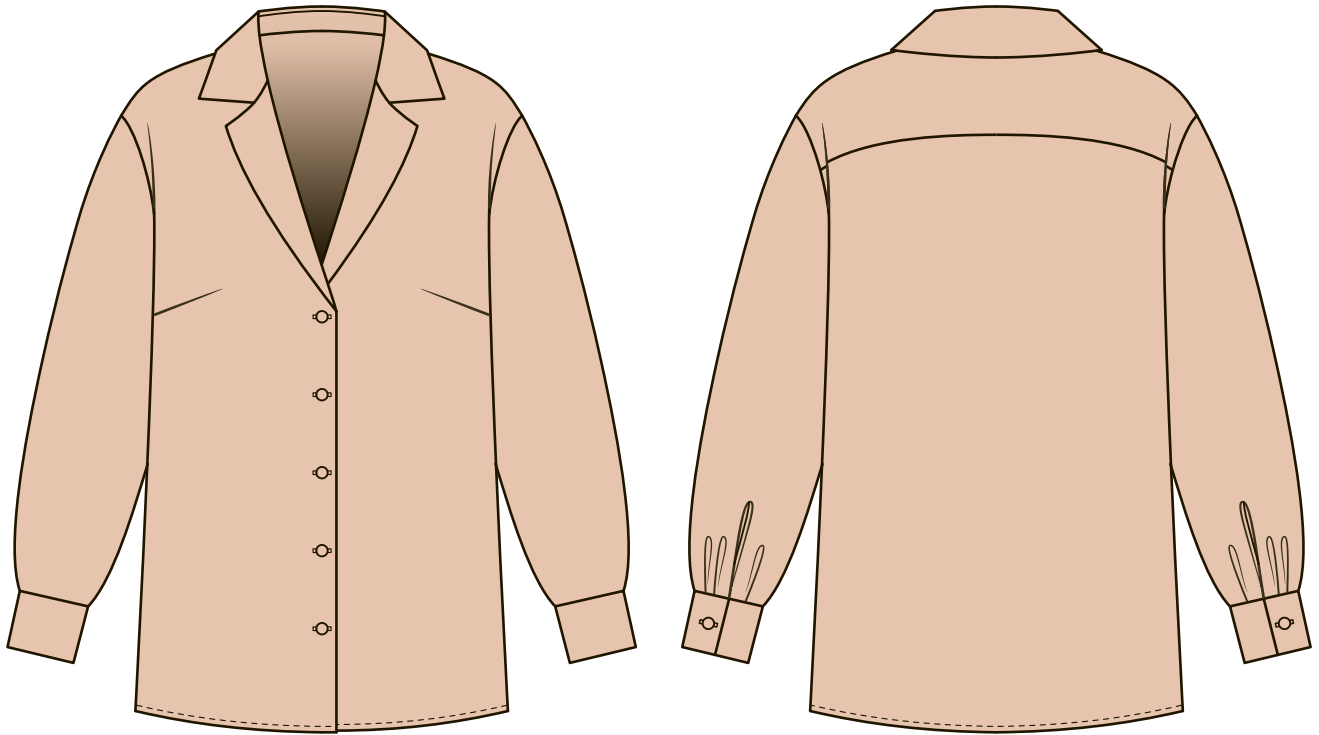


Back in 2016, when I was working on my first set of sewing instructions, I was trying to write them in such a way that even a complete beginner could easily understand and use them to create their very first garment. These instructions laid the foundation for the Vikisews brand, its vision and its mission. I wanted to create modern patterns with the utmost detailed and clear instructions.

Now, with each new collection we are constantly improving our instructions, amending them and adding more relevant details. By the time the final product reaches you, our drafters, correctors, and editors would have spent weeks perfecting every word and every photograph. If you compile a few of our instructions together, you will get a sewing manual that will assist you in sewing all kinds of garments at any difficulty level.

And I would be very happy if these instructions helped you to turn your hobby into a lifelong passion... Enjoy the process! Create your ultimate dream wardrobe! Wear your garments proudly for years to come!

If you have any questions, please contact us at info@vikisews.com — we are always there to help.



JENNA PATTERN DESCRIPTION

Jenna is a loose fitting blouse with a straight silhouette. It features bust darts, a double back yoke which extends to the front by 2 cm, a notched collar with a stand, and a dropped shoulder with long set-in sleeves. The sleeves feature a cuff with a button and buttonhole, three pleats, and a bias bound slit. Jenna fastens with a center front button placket.



IMPORTANT!

The contents of this pattern are copyright protected and belong exclusively to Vikisews. You may use Vikisews patterns for personal use. It is prohibited to share Vikisews patterns and instructions with third parties, as well as to publish patterns and instructions online for public access. **Non-compliance with the mentioned rules is a violation of the US copyright law and may result in civil liability and criminal prosecution.**

You may use Vikisews patterns for commercial use, to sew custom-made garments and/or create fashion collections, on the condition that the patterns are solely used in a manufacturing setting and are not further shared with individuals.

TOTAL WEARING EASE

Bust ease, cm	Waistline ease, cm	Hipline ease, cm	Upper arm ease, cm
17	36,5-42	11,4	9-11,5

GARMENT LENGTH, SLEEVE LENGTH

Garment length is measured at center back, sleeve length includes cuff:

Height, cm	Garment length, cm	Sleeve length, cm
1 (154-160)	64	59 61 63 65
2 (162-168)	67	
3 (170-176)	70	
4 (178-184)	73	

SUGGESTED FABRIC

To sew this blouse, choose woven fabrics with the following properties:

- Medium weight, flexible, breathable, soft, non-stretch or with very little stretch, opaque;
- The fiber content can include natural fibers (wool, silk), artificial (viscose), blends (wool + silk, silk + polyester, cotton + viscose, etc), and synthetic (polyester, polyester + elastane);
- The following fabrics are recommended: silk, silk velvet, challis, modal.

Attention! We do not recommend stretchy knit materials and lightweight sheer fabrics (chiffon, organza, stretch lace).

The blouse on the photo is made with silk fabric. This fabric is lightweight, flexible, soft and with very little stretch. The fiber content is 100% silk.

TOOLS AND EQUIPMENT

- Sewing machine for construction;
- Overlocker for finishing raw edges. This may be replaced with a stretch overlock stitch or a zigzag stitch on the sewing machine (overlock or zigzag stitch width 2-3mm, stitch length 2.5mm);
- Buttonhole foot for your sewing machine;
- Stitch-in-the-ditch foot for your sewing machine (optional).

PATTERN PIECES LIST

1. From main fabric:

- Front – cut 2;
- Back – cut 1 on fold;
- Back yoke – cut 2;
- Sleeve – cut 2;
- Front facing – cut 2;
- Collar stand – cut 2;
- Collar – cut 2;
- Cuff – cut 2;
- Binding for sleeve slit – cut 2.

2. From interfacing:

- Cuff – cut 2;
- Front facing – cut 2;
- Collar – cut 2;
- Collar stand – cut 2.

IMPORTANT!

Don't forget to transfer all pattern markings and notches onto the fabric.

SEAM ALLOWANCES

All pattern pieces include 1cm seam allowances. The blouse hem allowance is 2cm. Take this into account when laying out pattern pieces on the fabric.



Press the dart allowance down.



Press the excess at the dart point with the help of a tailor's ham and press down with a clapper.



Place the two yoke pieces right sides towards either side of the back piece, align the edges and match notches. Pin, hand baste, and stitch on the machine, backstitching at the beginning and end.



Press the seam flat and remove the basting stitches.