

# FROM THE FOUNDER OF THE #VIKISEWS BRAND

---

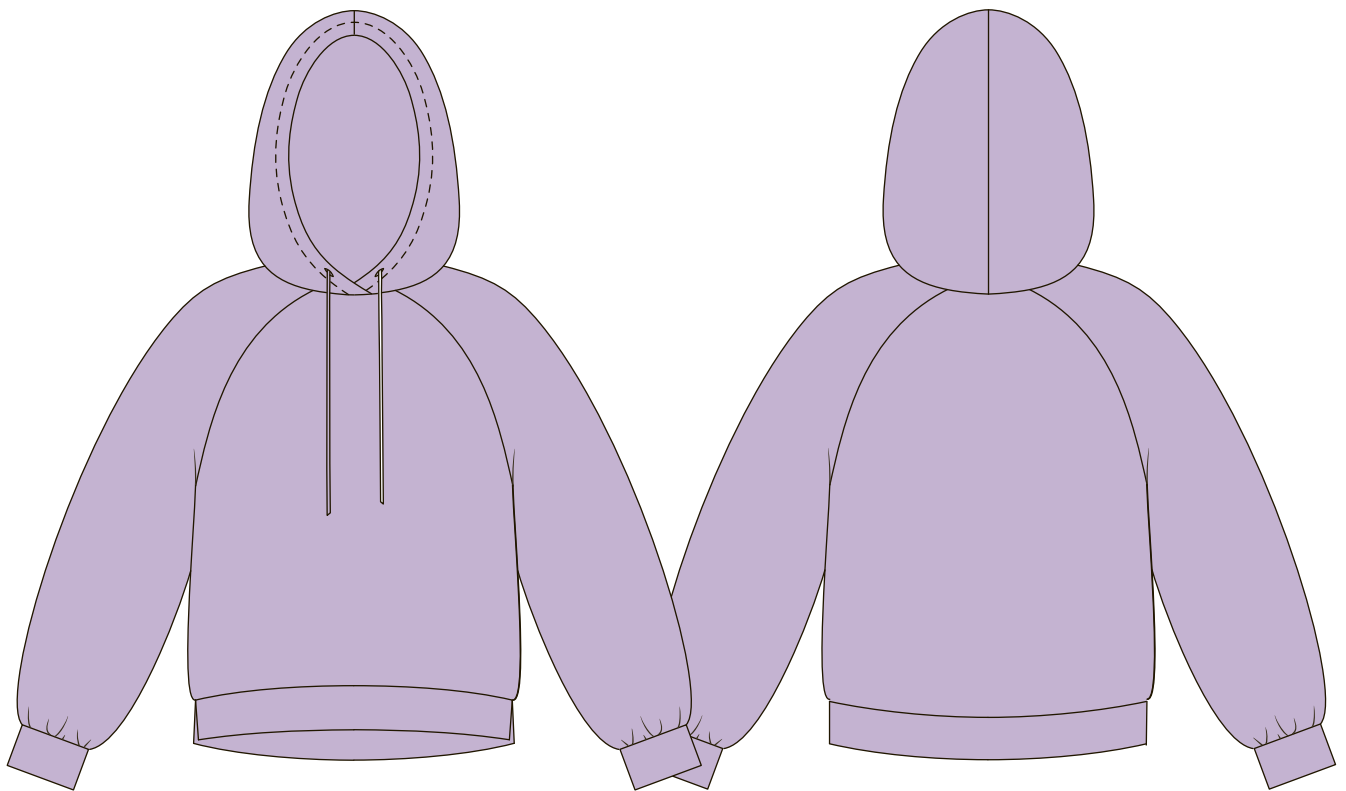


Back in 2016, when I was working on my first set of sewing instructions, I was trying to write them in such a way that even a complete beginner could easily understand and use them to create their very first garment. These instructions laid the foundation for the Vikisews brand, its vision and its mission. I wanted to create modern patterns with the utmost detailed and clear instructions.

Now, with each new collection we are constantly improving our instructions, amending them and adding more relevant details. By the time the final product reaches you, our drafters, correctors, and editors would have spent weeks perfecting every word and every photograph. If you compile a few of our instructions together, you will get a sewing manual that will assist you in sewing all kinds of garments at any difficulty level.

And I would be very happy if these instructions helped you to turn your hobby into a lifelong passion... Enjoy the process! Create your ultimate dream wardrobe! Wear your garments proudly for years to come!

If you have any questions, please contact us at [info@vikisews.com](mailto:info@vikisews.com) - we are always there to help.



## LILAS PATTERN DESCRIPTION

---

Lilas is a shortened loose fitting hoodie with an O-silhouette and a hood. The voluminous raglan sleeves are curved and that's what gives Lilas its distinctive shape. The bottom of the sleeves is finished with cuffs. The front and back hemline is curved and has a gentle high-low shape. The hem is finished with a two-piece waistband with slits at the side seams. The hood is voluminous with overlapping ends at the front, and has a channel for a strip of twill tape. Lilas is above hip length.



## IMPORTANT!

---

The contents of this pattern are copyright protected and belong exclusively to Vikisews. You may use Vikisews patterns for personal use. It is prohibited to share Vikisews patterns and instructions with third parties, as well as to publish patterns and instructions online for public access. **Non-compliance with the mentioned rules is a violation of the US copyright law and may result in civil liability and criminal prosecution.**

You may use Vikisews patterns for commercial use, to sew custom-made garments and/or create fashion collections, on the condition that the patterns are solely used in a manufacturing setting and are not further shared with individuals.

## TOTAL WEARING EASE

| Bust ease, cm | Waistline ease, cm | Hipline ease, cm | Upper arm ease, cm |
|---------------|--------------------|------------------|--------------------|
| 18            | 39,1               | 14,5             | 14,2-18,2          |

## GARMENT LENGTH, SLEEVE LENGTH

| Height, cm  | Back length including waistband, cm | Sleeve length from neckline including cuff, cm |
|-------------|-------------------------------------|--|
| 1 (154-160) | 59                                  | 69-72,5  |
| 2 (162-168) | 60,6-60,8                           | 72,1-73,8                                      |
| 3 (170-176) | 63,5-64,5                           | 73,1-76  |
| 4 (178-184) | 66,5                                | 75,4-76,7                                      |

## SUGGESTED FABRIC

To sew this hoodie, choose knit fabrics with the following properties:

- Medium weight, soft, non-stretch or with very little stretch
- The fiber content can include natural fibers (wool, cotton), artificial (viscose), blends (wool + polyester, cotton + polyester, cotton + elastane, etc), and synthetic (polyester, polyester + elastane)
- The following fabrics are recommended: French terry, sweatshirt fleece, double knits

**Attention!** We do not recommend lightweight materials.

As an additional material for the cuffs and waistband we recommend using rib knits.

The garment on the photo is made with sweatshirt fleece fabric. This fabric is medium weight, soft and has very little stretch. The fiber content is a blend of cotton and elastane. The waistband and cuffs are made out of ribbing.

5. Additional material, 120cm wide, for all sizes and heights – 0.29m

## IMPORTANT!

*When purchasing fabric, please account for shrinkage and buy 5% more than required.*

6. Twill tape, 1cm wide – 150cm

7. Matching thread - 5 spools (1 spool for the sewing machine and 4 spools for the overlocker)

## TOOLS AND EQUIPMENT

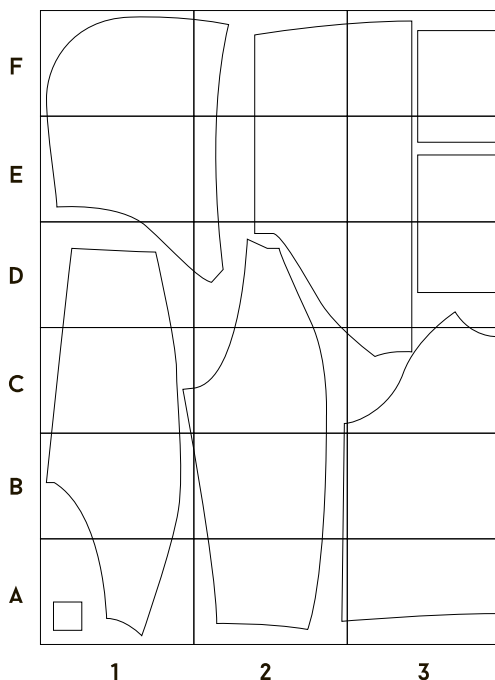
- Sewing machine for construction
- Overlocker for construction and for finishing raw edges. It may be replaced with a stretch overlock stitch or a zigzag stitch on the sewing machine (overlock or zigzag stitch width 2-3mm, stitch length 2.5mm)
- Coverstitch or coverlock machine to finish the hood seam allowance. If you don't own a coverstitch machine, you can finish the allowance with a twin needle on your sewing machine (if it has a zigzag capability)
- Buttonhole foot for your sewing machine
- Bodkin for threading tape through a channel (may be replaced with a safety pin)

## IMPORTANT!

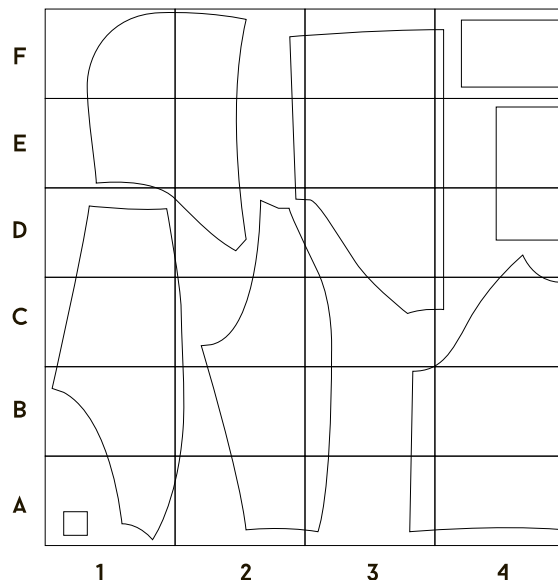
*When sewing knit fabrics, it's recommended to use specialty needles for knits (such as ballpoint, stretch, super stretch, jersey, etc.). These needles have a rounded tip which allows the needle to pass in between the loops instead of piercing the threads.*

## PRINTED PATTERN LAYOUTS

Sizes 34-38



Sizes 40-46





Gently stretch and press the long edge of the grown on hood facing (stretch only the very edge, without touching the foldline).



Stitch the buttonholes on the right side of the hood.



Carefully cut the buttonholes open.



Place the hood pieces right sides together, pin the center seam, baste, and stitch on the overlocker with 4 threads. Press.