

FROM THE FOUNDER OF THE #VIKISEWS BRAND

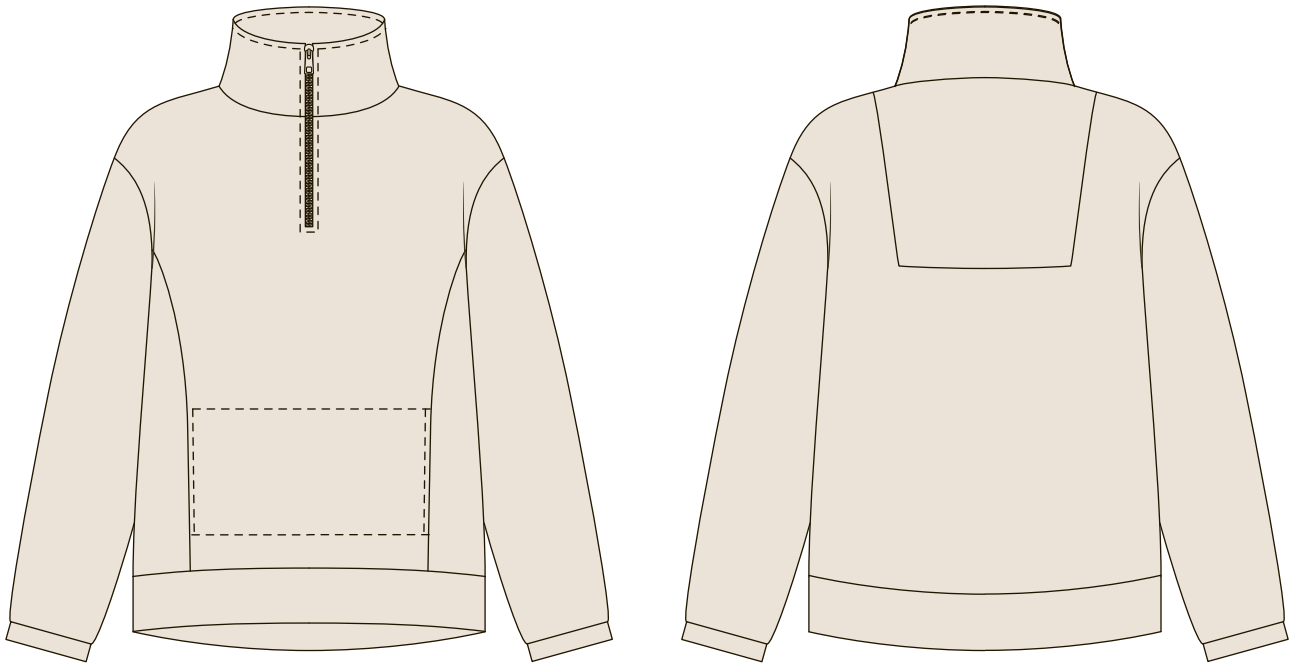


Back in 2016, when I was working on my first set of sewing instructions, I was trying to write them in such a way that even a complete beginner could easily understand and use them to create their very first garment. These instructions laid the foundation for the Vikisews brand, its vision and its mission. I wanted to create modern patterns with the utmost detailed and clear instructions.

Now, with each new collection we are constantly improving our instructions, amending them and adding more relevant details. By the time the final product reaches you, our drafters, correctors, and editors would have spent weeks perfecting every word and every photograph. If you compile a few of our instructions together, you will get a sewing manual that will assist you in sewing all kinds of garments at any difficulty level.

And I would be very happy if these instructions helped you to turn your hobby into a lifelong passion... Enjoy the process! Create your ultimate dream wardrobe! Wear your garments proudly for years to come!

If you have any questions, please contact us at info@vikisews.com — we are always there to help.



LINDSEY PATTERN DESCRIPTION

Lindsey is a loose fitting hoodie with a trapeze silhouette. The front features princess seams with internal in-seam pockets, and the back features a shaped yoke. The hoodie has a dropped shoulder and long sleeves with cuffs. Lindsey has a tall stand collar with a short center front closed-end zip. The slightly curved high-low hem has a waistband and the garment is below hip length.



IMPORTANT!

The contents of this pattern are copyright protected and belong exclusively to Vikisews. You may use Vikisews patterns for personal use. It is prohibited to share Vikisews patterns and instructions with third parties, as well as to publish patterns and instructions online for public access. **Non-compliance with the mentioned rules is a violation of the US copyright law and may result in civil liability and criminal prosecution.**

You may use Vikisews patterns for commercial use, to sew custom-made garments and/or create fashion collections, on the condition that the patterns are solely used in a manufacturing setting and are not further shared with individuals.

TOTAL WEARING EASE

Bust ease, cm	Waistline ease, cm	Hipline ease, cm	Upper arm ease
21,7-24,7	43,3-46,5	20,5-23,3	11-16

GARMENT LENGTH, SLEEVE LENGTH

Height, cm	Back length including waistband, cm	Sleeve length including shoulder width and cuff, cm
1 (154-160)	63-66,1	68,9-70,5
2 (162-168)	66-69	70,9-72,5
3 (170-176)	69-71	72,9-74,5
4 (178-184)	72-74	74,9-76,5

SUGGESTED FABRIC

To sew this hoodie, choose knit fabrics with the following properties:

- Medium weight, soft, structured, non-stretch or with very little stretch
- The fiber content can include natural fibers (wool, cotton), artificial (viscose), blends (wool + polyester, cotton + polyester, cotton + elastane, etc), and synthetic (polyester, polyester + elastane)
- The following fabrics are recommended: French terry, sweatshirt fleece, neoprene

Attention! We do not recommend lightweight materials.

As an additional material for the cuffs, inner collar, waistband and front facing we recommend using rib knits. The garment on the photo is made with sweatshirt fleece fabric. This fabric is medium weight, soft and has very little stretch. The fiber content is a blend of 95% cotton and 5% elastane. Ribbing is used as an additional fabric, and the pocket lining is made out of cotton jersey.

PATTERN PIECES LIST

1. From main fabric:

- Front – cut 1 on fold
- Side front – cut 2
- Back – cut 1 on fold
- Back yoke – cut 1 on fold
- Sleeve – cut 2
- Outer collar* – cut 2 on fold
- Front facing* – cut 1 on fold
- Cuff* - cut 2
- Front waistband* – cut 1 on fold
- Back waistband* - cut 1 on fold

*cut according to cutting plans without the use of the additional material

2. From additional fabric:

- Inner collar – cut 2
- Front facing – cut 1 on fold
- Cuff - cut 2
- Front waistband – cut 1 on fold
- Back waistband - cut 1 on fold

3. From lining:

- Pocket lining – cut 1 on fold

4. From interfacing:

- Outer collar edges (1.5cm wide strip of interfacing, length according to pattern piece)
- Back neckline edge (1cm wide strip of interfacing, 6cm long)
- Zipper area on the front piece (4cm wide strip of interfacing, 12cm long)
- Grown on pocket facings (4cm wide strip of interfacing, length according to pattern piece)
- Corners where yoke is attached on the back piece (1.5 x 1.5cm squares of interfacing)

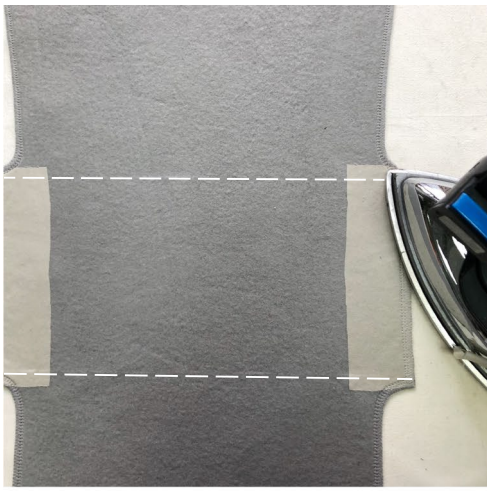
The grainline on the interfacing strips should be along the long side (along the interfacing selvedge). You will also need to cut strips of interfacing to reinforce the upper seam allowance of the patch pockets.

IMPORTANT!

Don't forget to transfer all pattern markings and notches onto the fabric.

SEAM ALLOWANCES

All pattern pieces include 1cm seam allowances along all seams except for zipper insertion area, where the seam allowance is 7mm. Take this into account when laying out pattern pieces on the fabric.



Overlock the princess seam edges on the front piece with the wrong side facing up. Press.

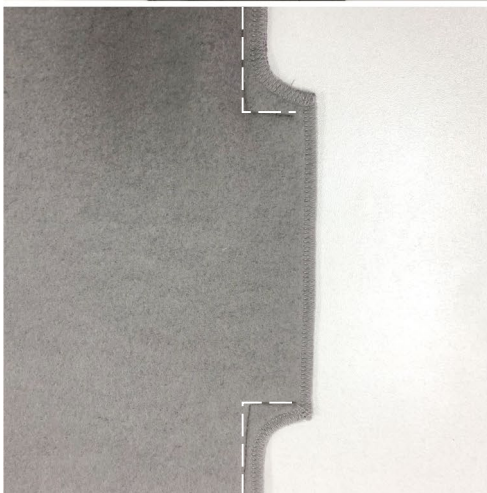
Mark and hand baste the topstitching lines on the front piece. Use light coloured hand basting thread, in order to avoid marking the fabric during pressing and steaming.



Stitch on the bottom topstitching line on the front piece. Stitch on the right side with a stitch length of 4mm. Backstitch at the beginning and end.



Place the front piece and the side front pieces right sides together along the princess seams. Align the edges, pin and baste.



Stitch the pieces on the sewing machine.

Stitch from the underarm up to the point of pocket opening, then perpendicularly towards to the edge of the grown on facing, stopping 1cm short of the edge. Backstitch at the beginning and end.

Next start stitching 1cm away from the grown on facing edge, stop at the pocket opening point and continue along the princess seam all the way to the bottom edge. Backstitch at the beginning and end.