

I M P O R T A N T !

The contents of this pattern are copyright protected and belong exclusively to Vikisews. You may use Vikisews patterns for personal use. It is prohibited to share Vikisews patterns and instructions with third parties, as well as to publish patterns and instructions online for public access. **Non-compliance with the mentioned rules is a violation of the US copyright law and may result in civil liability and criminal prosecution.**

You may use Vikisews patterns for commercial use, to sew custom-made garments and/or create fashion collections, on the condition that the patterns are solely used in a manufacturing setting and are not further shared with individuals.

L O R A

#vikisews

PATTERN DESCRIPTION

Lora is a pair of classic trousers with a semi-slim fit around the waist and hips, and slightly tapered towards the hem. Lora features a waistband that sits on the natural waist, fastens with a button and buttonhole, and has five belt loops. The trousers have a fly front zipper, western style front hip pockets, a single welt pocket on the back right leg, and pressed crease lines on both the front and back. The pockets and the perimeter of the waistband have decorative topstitching. The trousers are a classic heel length.



TOTAL WEARING EASE

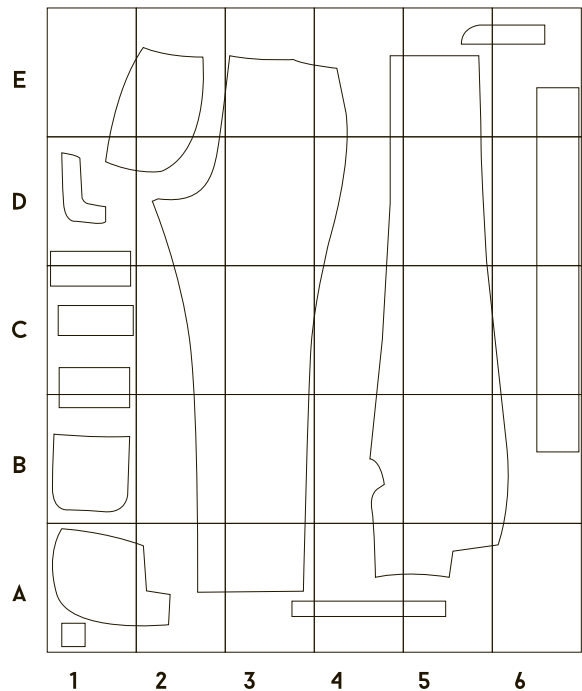
Waistline ease, cm	Hipline ease, cm
6,4-7,3	3,9-4,2

GARMENT LENGTH

Size	Height, cm	Garment length along side seam, including waistband, cm
34-52	1 (154-160)	98,5-100
34-52	2 (162-168)	104,3-104,4
34-52	3 (170-176)	107,2-108,7
34-52	4 (178-184)	111,7-113,2

The width of the pant at the hem for sizes 34-52 is 17.7 – 23cm; the difference between each size is 0.6cm.

PRINTED PATTERN LAYOUT



PATTERN PIECES LIST

1. From main fabric:

- Front leg – cut 2;
- Back leg – cut 2
- Pocket – cut 2
- Waistband – cut 1
- Belt loops – cut 1
- Welt facing – cut 1
- Welt – cut 1
- Front pocket facing – cut 2
- Fly shield – cut 1.

Attention! For sizes 40-52, you will need to cut 10cm from the main fabric for the waistband and the welt facing pieces to be cut in one layer.

2. From lining:

- Front pocket lining – cut 2;
- Back pocket lining – cut 2.

3. From interfacing:

- Waistband – cut 1;
- Welt – cut 1;
- Welt facing – cut 1;
- Front pocket facing – cut 2;
- Fly shield – cut 1 (half of the piece).

You will also need to cut 1cm strips of interfacing to reinforce the pocket openings on the front legs. Additionally, interface the fly extension edge on the front legs: for the right side, cut out the template, and for the left side, cut 1.5cm wide strip of interfacing (measure the length on the pattern piece).

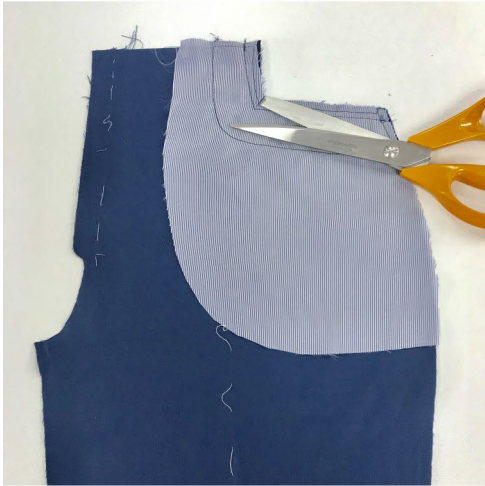
The strips of interfacing are cut long edge along the grainline.

IMPORTANT!

Don't forget to transfer all pattern markings and notches onto the fabric.



Place the pocket lining piece right sides together with the front leg piece, align the pocket opening edges and pin. Stitch on the sewing machine, backstitching at the beginning and end. Press.



Clip into the seam allowance at the corner, stopping 1mm short of the stitching line.



Press the seam allowance towards the pocket bag and understitch, stitching on the right side of the facing at 1mm from the seam. Stitch in the following manner: from the side edge to the corner, leave the needle in the fabric, lift the presser foot and turn, lower the presser foot and stitch from the corner to the upper edge. Backstitch at the beginning and end.

We recommend using the stitch-in-the-ditch foot for this step.



Trim the lining seam allowance close to the seam.