



I M P O R T A N T !

The contents of this pattern are copyright protected and belong exclusively to Vikisews. You may use Vikisews patterns for personal use. It is prohibited to share Vikisews patterns and instructions with third parties, as well as to publish patterns and instructions online for public access. **Non-compliance with the mentioned rules is a violation of the US copyright law and may result in civil liability and criminal prosecution.**

You may use Vikisews patterns for commercial use, to sew custom-made garments and/or create fashion collections, on the condition that the patterns are solely used in a manufacturing setting and are not further shared with individuals.

M A C Y

#vikisews

PATTERN DESCRIPTION

Macy is a loose fitting blouse featuring front and back yoke details, a classic collar with stand, a hidden button placket, and a dropped shoulder. The two-piece sleeve is a loose fitting, classic shirt style, embellished with a large rectangular topstitched patch. The bottom of the sleeve is finished with a topstitched tab imitating the look of a cuff, and features a buttonhole which together with the button fastens a deep inverted pleat. Macy has a curved hem and is mid-hip length.



TOTAL WEARING EASE

Bust ease, cm	Waistline ease, cm	Hipline ease, cm	Upper arm ease, cm
19	38,9	12,7	8,4-10

GARMENT LENGTH, SLEEVE LENGTH

Height, cm	Center back length, cm	Sleeve length including shoulder width, cm
1 (154-160)	70	55,2-55,7
2 (162-168)	73	57,2-57,6
3 (170-176)	76	59,2-59,6
4 (178-184)	79	61,2-61,6

SUGGESTED FABRIC

To sew this blouse, choose woven fabrics with the following properties:

- Medium weight, flexible, breathable, soft, non-stretch or with very little stretch, opaque;
- The fiber content can include natural fibers (silk, cotton, linen), artificial (viscose), blends (silk + wool, silk + polyester, cotton + viscose, etc), and synthetic (polyester, polyester + elastane);
- The following fabrics are recommended: lightweight denim, silk, viscose challis, lightweight micro velvet .

Attention! We do not recommend stretchy knit materials and lightweight sheer fabrics (chiffon, organza, stretch lace).

The blouse on the photo is made with silk fabric. This fabric is medium weight, soft and not stretchy. The fiber content is 100% silk.

FABRIC REQUIREMENTS

1. Main fabric, 140cm wide, with a directional print, in meters:

Height, cm	Size 34-38	Size 40-46
1 (154-160)	1,60	1,80
2 (162-168)	1,65	1,85
3 (170-176)	1,70	1,90
4 (178-184)	1,75	1,95

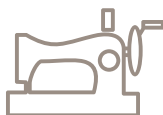
IMPORTANT!

When purchasing fabric, please account for shrinkage and buy 5% more than required.

2. Lightweight fusible woven or knit interfacing, 140cm wide, for all sizes and heights – 0.6m.
3. 10 buttons 0.7-1cm in diameter.
4. Matching thread, 5 spools (1 spool for the sewing machine and 4 spools for the overlocker).

TOOLS AND EQUIPMENT

- Sewing machine for construction;
- Overlocker for finishing raw edges. This may be replaced with a stretch overlock stitch or a zigzag stitch on the sewing machine (overlock or zigzag stitch width 2-3mm, stitch length 2.5mm);
- Buttonhole foot for your sewing machine;
- Stitch-in-the-ditch foot for your sewing machine (optional).



PATTERN PIECES LIST

1. From main fabric:

- Right front – cut 1;
- Left front – cut 1;
- Back – cut 1 on fold;
- Left front yoke – cut 1;
- Right front yoke – cut 1;
- Back yoke – cut 1 on fold;
- Top sleeve – cut 2;
- Bottom sleeve – cut 2;
- Sleeve patch – cut 2;
- Sleeve tab – cut 2;
- Bottom tab – cut 2;
- Collar – cut 2;
- Collar stand – cut 2.

2. From interfacing:

- Sleeve tab – cut 2;
- Bottom tab – cut 2;
- Collar – cut 2;
- Collar stand – cut 2.

You will also need to partially interface the right and left button plackets and front yokes.

IMPORTANT!

Don't forget to transfer all pattern markings and notches onto the fabric.

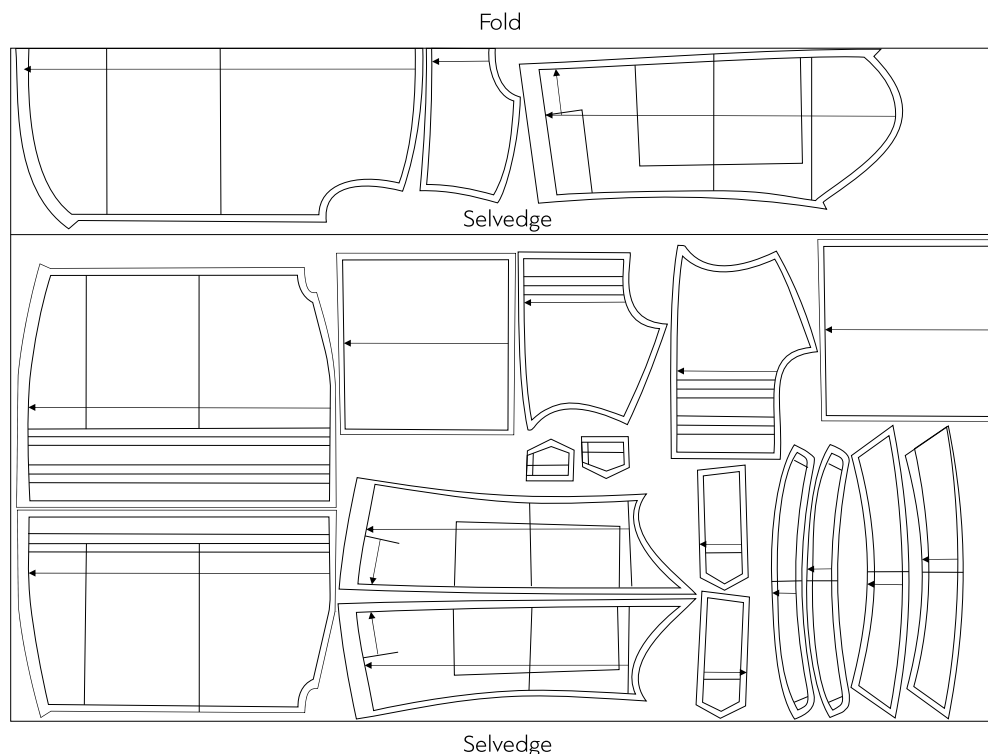
SEAM ALLOWANCES

All pattern pieces include 1cm seam allowances. The blouse hem allowance is 2cm and the sleeve hem allowance is 3cm. Take this into account when laying out pattern pieces on the fabric.

CUTTING LAYOUT

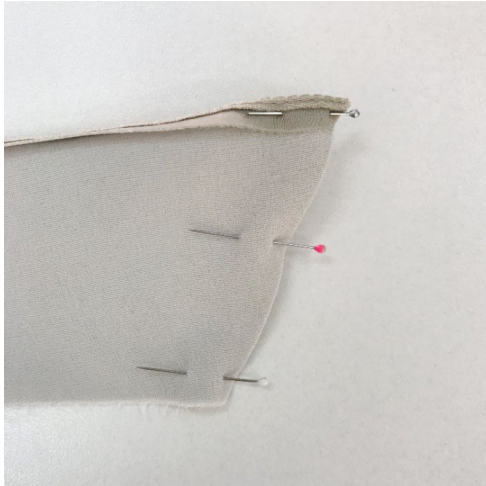
Main fabric, 140cm wide, with one partial fold, for sizes 34-38 in all heights, with a nap and directional print

Attention! We do not recommend stretchy knit materials and lightweight sheer fabrics (chiffon, organza, stretch lace).





Press the undercollar to the wrong side with a 1mm roll of the upper collar.



Place the collar right sides together, pin the side edges, stitch, backstitching at the beginning and end.



Trim the corners of the side edges seam allowances.



Place the collar's bottom edge in between the collar stand pieces, right sides together, and match all notches. Pin, hand baste and stitch on the sewing machine, backstitching at the beginning and end. Press the seam flat, then turn the collar stand pieces right side out and press. Trim the seam allowance down to 5mm, and down to 3mm at the stand's curved edges.