

FROM THE FOUNDER OF THE #VIKISEWS BRAND



Back in 2016, when I was working on my first set of sewing instructions, I was trying to write them in such a way that even a complete beginner could easily understand and use them to create their very first garment. These instructions laid the foundation for the Vikisews brand, its vision and its mission. I wanted to create modern patterns with the utmost detailed and clear instructions.

Now, with each new collection we are constantly improving our instructions, amending them and adding more relevant details. By the time the final product reaches you, our drafters, correctors, and editors would have spent weeks perfecting every word and every photograph. If you compile a few of our instructions together, you will get a sewing manual that will assist you in sewing all kinds of garments at any difficulty level.

And I would be very happy if these instructions helped you to turn your hobby into a lifelong passion... Enjoy the process! Create your ultimate dream wardrobe! Wear your garments proudly for years to come!

If you have any questions, please contact us at info@vikisews.com — we are always there to help.



JENNY PATTERN DESCRIPTION

Jenny is a basic t-shirt with a tight fit, a short set-in sleeve, and a crew neck finished with a band. Jenny is hip-length.



IMPORTANT!

The contents of this pattern are copyright protected and belong exclusively to Vikisews. You may use Vikisews patterns for personal use. It is prohibited to share Vikisews patterns and instructions with third parties, as well as to publish patterns and instructions online for public access. According to part 1 of clause 1252 and clause 1301 of the Civil Code of the Russian Federation, failure to comply with the mentioned rules constitutes a breach of the legislation in force in the field of copyright and entails liability of the violator. Illegal use or distribution will be prosecuted in accordance with legislation.

You may use Vikisews patterns for commercial use, to sew custom-made garments and/or create fashion collections, on the condition that the patterns are solely used in a manufacturing setting and are not further shared with individuals.

TOTAL WEARING EASE

Bust ease, cm	Waistline ease, cm	Hipline ease, cm	Upper arm ease, cm
-10,6	1,9-6,8	-7,5	-1-0,5

GARMENT LENGTH, SLEEVE LENGTH

Height, cm	Back length including neckband width, cm	Sleeve length, cm
1 (154-160)	53,8	13,9-18
2 (162-168)	56,8	15-19
3 (170-176)	59,8	16-20
4 (178-184)	62,8	17-21

SUGGESTED FABRIC

To sew this t-shirt, choose knit fabrics with the following properties:

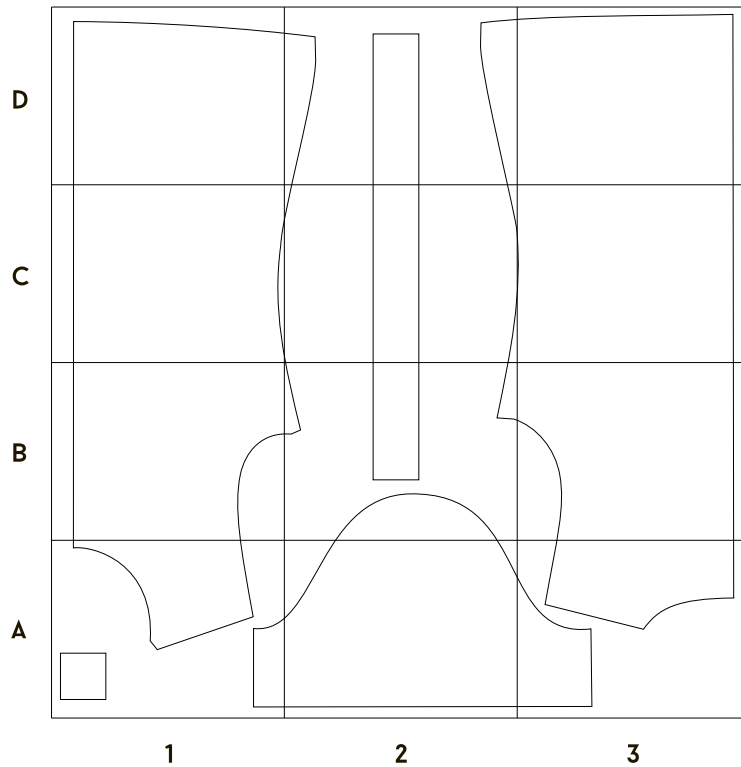
- Soft, stretchy and very stretchy, with good recovery, smooth or textured;
- The fiber content can include natural fibers (wool, cotton, silk, bamboo + cotton), artificial (viscose), blends (wool + elastane, cotton + polyester + nylon, cotton + elastane, cotton + spandex, bamboo + elastane, viscose + elastane), and synthetic (polyester + nylon + elastane, polyester + acrylic);
- The following fabrics are recommended: cotton jersey, rib knits, bamboo jersey, ITY knits, viscose jersey, spandex, sweater knits.

Attention! The chosen material must contain elastane or spandex.

The t-shirt on the photo is made with bamboo jersey. This fabric is thin, soft, and has very good recovery. The fiber content is a blend of 95% bamboo and 5% spandex.

Sizes 42-44 (height 3-4)

Sizes 46-52 (height 1-4)



PATTERN PIECES LIST

1. From main fabric:

- Front – cut 1 on fold
- Back – cut 1 on fold
- Sleeve – cut 2
- Neckband – cut 1

2. From interfacing:

- Front shoulder seam allowance

Interface the front shoulder seam allowances with 1cm strips of interfacing (measure the length according to pattern piece).

IMPORTANT!

Don't forget to transfer all pattern markings and notches onto the fabric.

SEAM ALLOWANCES

All pattern pieces include 1cm seam allowances along all seams. The garment and sleeve hem allowances are 2cm. Take this into account when laying out pattern pieces on the fabric.



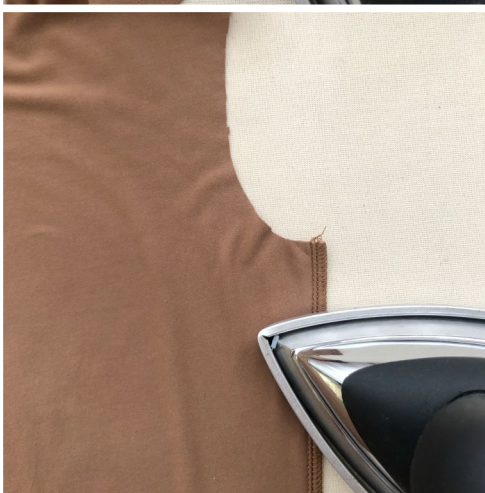
Place the front and back pieces right sides together. Align the shoulder and side seams, pin, baste, and overlock with the back piece facing up. Stitch width is 7mm, so trim off 3mm while serging.



Press the shoulder seam flat.



Press the seam allowance towards the front.



Press the side seam flat.