

# FROM THE FOUNDER OF THE #VIKISEWS BRAND

---



Back in 2016, when I was working on my first set of sewing instructions, I was trying to write them in such a way that even a complete beginner could easily understand and use them to create their very first garment. These instructions laid the foundation for the Vikisews brand, its vision and its mission. I wanted to create modern patterns with the utmost detailed and clear instructions.

Now, with each new collection we are constantly improving our instructions, amending them and adding more relevant details. By the time the final product reaches you, our drafters, correctors, and editors would have spent weeks perfecting every word and every photograph. If you compile a few of our instructions together, you will get a sewing manual that will assist you in sewing all kinds of garments at any difficulty level.

And I would be very happy if these instructions helped you to turn your hobby into a lifelong passion... Enjoy the process! Create your ultimate dream wardrobe! Wear your garments proudly for years to come!

If you have any questions, please contact us at [info@vikisews.com](mailto:info@vikisews.com) — we are always there to help.



## HAILEY PATTERN DESCRIPTION

---

Hailey is an oversized, straight-cut jacket padded with Alpolux 200 insulation material. The jacket features voluminous shirt sleeves, a tall stand collar that can also be worn as a turn-down collar, and welt pockets with sewn-in ends on the front. The sleeves are finished with elasticated cuffs. The jacket closes with an off-center front snap fastening. The faced hem has a casing with elastic cord threaded through it. The cord has stoppers on it and is held with loops at the side seams of the lining. Hailey is below-the-hip length.



## IMPORTANT!

---

The contents of this pattern are copyright protected and belong exclusively to Vikisews. You may use Vikisews patterns for personal use. It is prohibited to share Vikisews patterns and instructions with third parties, as well as to publish patterns and instructions online for public access. According to part 1 of clause 1252 and clause 1301 of the Civil Code of the Russian Federation, failure to comply with the mentioned rules constitutes a breach of the legislation in force in the field of copyright and entails liability of the violator. Illegal use or distribution will be prosecuted in accordance with legislation.

You may use Vikisews patterns for commercial use, to sew custom-made garments and/or create fashion collections, on the condition that the patterns are solely used in a manufacturing setting and are not further shared with individuals.

# TOTAL EASE ALLOWANCE

	Bust ease	Waistline ease	Hipline ease	Upper arm ease
cm	54.1–54.2	74.7–75.7	51.1–54	25.7–26.1
inches	21 1/4–21 3/8	29 3/8–29 3/4	20 1/8–21 1/4	10 1/8–10 1/4

# GARMENT LENGTH, SLEEVE LENGTH

Height, cm	Back length, cm	Sleeve length including shoulder and cuff width, cm
1 (154–160)	85.5–88.7	78.9–80.4
2 (162–168)	89.6–92.7	80.9–82.4
3 (170–176)	93.6–97.6	82.9–84.4
4 (178–184)	97.6–100.7	84.9–86.4
Height, ft	Back length, in	Sleeve length including shoulder and cuff width, in
1 (5'1"–5'3")	33 5/8–34 7/8	31 1/8–31 5/8
2 (5'4"–5'6")	35 1/4–36 1/2	31 7/8–32 1/2
3 (5'7"–5'9")	36 7/8–38 3/8	32 5/8–33 1/4
4 (5'10"–6'1")	38 3/8–39 5/8	33 3/8–34

# SUGGESTED FABRIC

To sew the jacket, choose outerwear fabrics with the following properties:

- medium weight, soft, non-stretch, water-repellent, windproof
- the fiber content can include natural fibers (cotton), artificial fibers (viscose), blends (cotton + viscose, cotton + polyester, etc.), and synthetics (polyester, polyamide)
- the following fabrics are recommended: blended raincoat fabrics, outerwear fabrics, dewspo, taffeta, lacquered nylon.

For the insulation layer, choose 200 g/m<sup>2</sup> materials: alpolux, isosoft, thinsulate, holofiber, polyester batting, or use pre-quilted outerwear fabrics.

**Attention!** We do not recommend stretchy knit materials or heavyweight (denim) fabrics.

For the lining, choose lining fabrics made of artificial fibers (viscose), blends (viscose + elastane, viscose + polyester), or synthetics (polyester, polyester + elastane).

# TOOLS AND EQUIPMENT

---

- sewing machine for construction
- overlocker for finishing raw edges. It can be replaced with a stretch overlock stitch or a zigzag stitch on the sewing machine (overlock or zigzag stitch width 2–3 mm, stitch length 2.5 mm) (optional)
- one-sided foot
- stitch-in-the-ditch foot for the sewing machine (optional)
- hand-press tool, punch tool, and molds to install grommets and snaps

## PATTERN PIECES LIST

---

### 1. From main fabric:

- front — cut 2
- back — cut 1 on fold
- sleeve — cut 2
- stand collar — cut 2
- cuff — cut 2
- back neck facing — cut 1 on fold
- front facing — cut 2
- welt — cut 2
- pocket facing — cut 2
- front hem facing — cut 2
- back hem facing — cut 1 on fold

### 3. From interfacing:

- front facing — cut 2
- back neck facing — cut 1 on fold

### 2. From lining fabric:

- front lining — cut 2
- back lining — cut 1 on fold
- sleeve lining — cut 2
- pocket top lining — cut 2
- pocket bottom lining — cut 2
- loop — cut 1

**IMPORTANT!** Don't forget to transfer all pattern markings and notches onto the fabric.

Additionally, cut two interfacing strips, 7 cm (2 3/4") wide, to interface the pocket area. The interfacing strips should be cut on the straight grain (parallel to the selvedge).

You're also going to need 16 square pieces of interfacing, 2×2 cm (3/4"×3/4"), to be applied to the snap and grommet areas.

## SEAM ALLOWANCES

---

All pattern pieces include the seam allowances as follows:

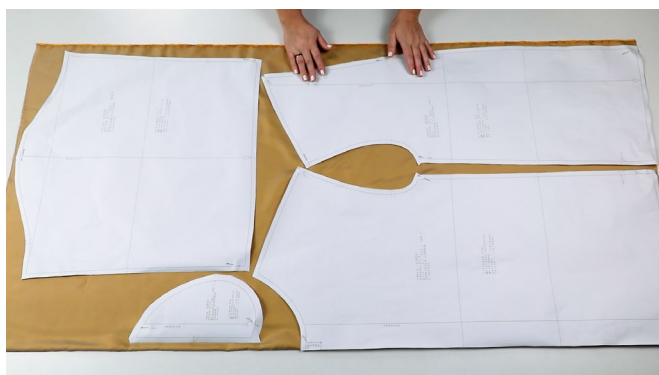
- all welt edges — 1.5 cm (5/8")
- all pocket facing edges — 1.5 cm (5/8")
- pocket lining curved edges — 1.5 cm (5/8")
- all other edges — 1 cm (3/8")

Take this into account when laying out pattern pieces on the fabric.



Press or preshrink the main fabric before cutting it (unless the fabric is pre-treated or contains a membrane layer). If you discover any fabric defects, outline them with tailor's chalk on the wrong side of the fabric and avoid laying any pattern pieces over those spots.

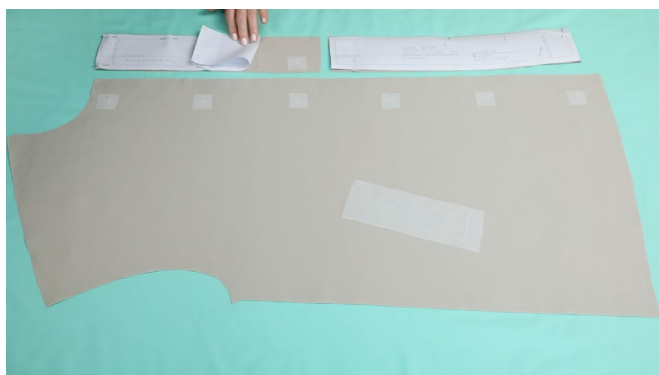
Fold the fabric piece right sides together, either in half or partially. Make sure the fold is parallel to the selvedge. Lay out all the pattern pieces on the fabric in the same direction to avoid variation in color. The grainline must be parallel to the selvedge and fold.



Preshrink the lining fabric by pressing it from both sides, without pressing the foldline area. Then press the foldline area separately. Let it cool down and dry.

Don't cut out the lining pieces until the first fitting is done and the necessary adjustments, if any, are made.

Fold the lining fabric in half, right sides together. Lay all the lining pattern pieces in the same direction, following the grainline.



**IMPORTANT!** Before doing any hand sewing, make sure needles do not leave visible holes in your fabric. If they do, use a disappearing marking pen to transfer markings to the fabric and test the pen on a scrap first.

If no visible holes are left by needles, thread-trace the following:

- center front lines
- snap and grommet placement
- pocket placement.



Do not apply interfacing if your fabric is pre-treated or contains a membrane layer, or if the interfacing leaves imprints on the right side of the fabric after pressing.