

FROM THE FOUNDER OF THE #VIKISEWS BRAND

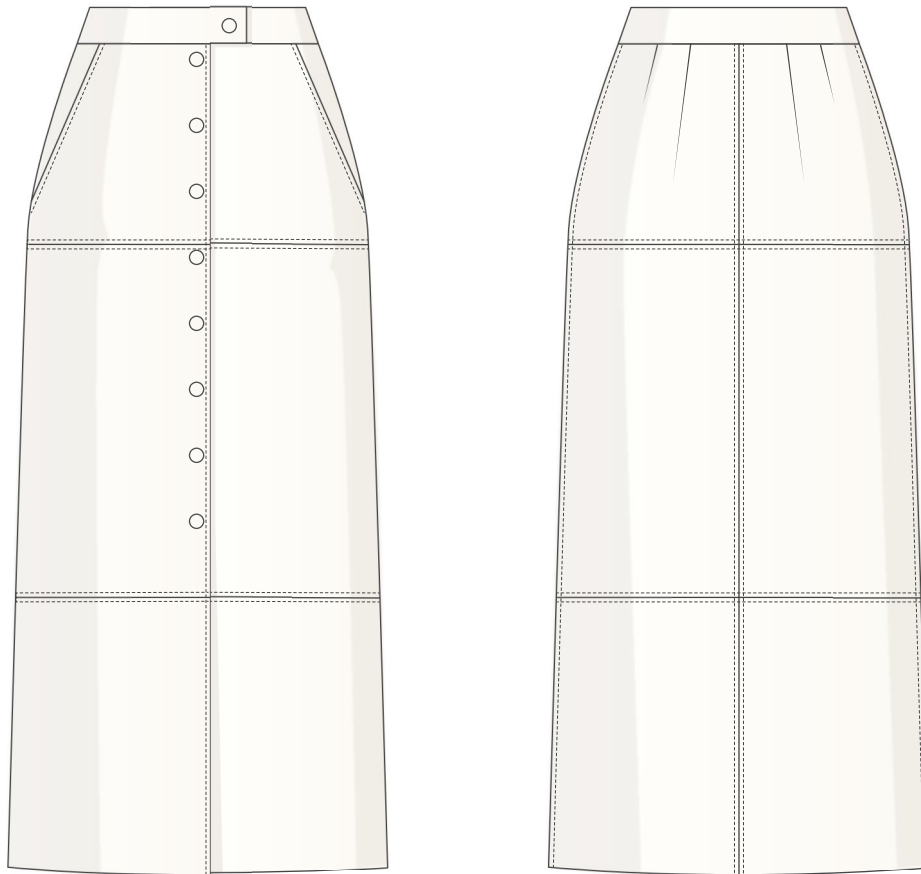


Back in 2016, when I was working on my first set of sewing instructions, I was trying to write them in such a way that even a complete beginner could easily understand and use them to create their very first garment. These instructions laid the foundation for the Vikisews brand, its vision and its mission. I wanted to create modern patterns with the utmost detailed and clear instructions.

Now, with each new collection we are constantly improving our instructions, amending them and adding more relevant details. By the time the final product reaches you, our drafters, correctors, and editors would have spent weeks perfecting every word and every photograph. If you compile a few of our instructions together, you will get a sewing manual that will assist you in sewing all kinds of garments at any difficulty level.

And I would be very happy if these instructions helped you to turn your hobby into a lifelong passion... Enjoy the process! Create your ultimate dream wardrobe! Wear your garments proudly for years to come!

If you have any questions, please contact us at info@vikisews.com — we are always there to help.



JANE PATTERN DESCRIPTION

Jane is a semi-fitted, straight-cut skirt. It is lined and flared slightly toward the bottom. There are darts and a center seam on the back. The skirt features horizontal seams at the hip level and below mid-thigh. The skirt has front slash pockets and closes with set-in snaps at the center front. The applied waistband with an overlap also closes with a set-in snap. Jane is below mid-calf length.



IMPORTANT!

The contents of this pattern are copyright protected and belong exclusively to Vikisews. You may use Vikisews patterns for personal use. It is prohibited to share Vikisews patterns and instructions with third parties, as well as to publish patterns and instructions online for public access. According to part 1 of clause 1252 and clause 1301 of the Civil Code of the Russian Federation, failure to comply with the mentioned rules constitutes a breach of the legislation in force in the field of copyright and entails liability of the violator. Illegal use or distribution will be prosecuted in accordance with legislation.

You may use Vikisews patterns for commercial use, to sew custom-made garments and/or create fashion collections, on the condition that the patterns are solely used in a manufacturing setting and are not further shared with individuals.

TOTAL EASE ALLOWANCE

	Waistline ease	Hipline ease
cm	1–2	4.4–5.9
inches	3/8–3/4	1 3/4–2 3/8

GARMENT LENGTH

Height, cm	Back length including waistband, cm	Height, ft	Back length including waistband, in
1 (154–160)	78.7	1 (5'1"–5'3")	31
2 (162–168)	81.7	2 (5'4"–5'6")	32 1/8
3 (170–176)	84.7	3 (5'7"–5'9")	33 3/8
4 (178–184)	87.7	4 (5'10"–6'1")	34 1/2

SUGGESTED FABRIC

To sew this skirt, choose fabrics with the following properties:

- medium-weight, soft, non-stretch or low-stretch, opaque
- the fiber content can include polyurethane, polyvinyl chloride (PVC) with a woven or knit backing
- the following fabrics are recommended: faux leather, faux suede.

Attention! We do not recommend stretchy knit fabrics and lightweight sheer fabrics (chiffon, organza, stretch lace).

For the lining, choose lining fabrics made of artificial fibers (viscose), blends (viscose + elastane, viscose + polyester), or synthetics (polyester, polyester + elastane).

The skirt in the photos is made of faux leather. The fabric is medium-weight, pliable, soft, low-stretch, and has a woven backing. The fiber content is a blend of polyester and polyurethane. The fabric weight is 350 g/m².

The lining is 100% viscose. The weight of the lining fabric is 100 g/m².

The knit interfacing weight is 30 g/m². The woven interfacing weight is 70 g/m².

TOOLS AND EQUIPMENT

- sewing machine for construction
- stitch-in-the-ditch foot for the sewing machine (optional)
- teflon or walking foot for the sewing machine
- press tool for installing snaps.

PATTERN PIECES LIST

1. From main fabric:

- top back skirt – cut 2
- middle back skirt – cut 2
- bottom back skirt – cut 2
- top front skirt – cut 2
- middle front skirt – cut 2
- bottom front skirt – cut 2
- pocket facing – cut 2
- right waistband – cut 2
- left waistband – cut 2
- back waistband – cut 2.

2. From lining fabric:

- front lining – cut 2
- back lining – cut 1
- pocket top lining – cut 2
- pocket bottom lining – cut 2.

***IMPORTANT!** Don't forget to transfer all pattern markings and notches onto the fabric.*

3. From interfacing:

- right waistband – cut 2
- left waistband – cut 2
- back waistband – cut 2.

Additionally, cut two 8 cm (3 1/8") wide strips to interface the center front seam allowance. The grainline direction on the interfacing strips should be the same as on the main skirt pieces.

SEAM ALLOWANCES

All pattern pieces include seam allowances as follows:

- garment hem allowance – 3.5 cm (1 3/8")
- all other edges – 1 cm (3/8").

Take this into account when laying out pattern pieces on the fabric.

To interface, put the gluey side of the interfacing onto the wrong side of the fabric piece (or a section thereof) and press with the iron.

Do not iron the piece, but instead press it section by section, holding it down with the iron for a few seconds until that section is adhered and then pressing down the next section. You may use a cotton pressing cloth to protect your iron sole. Once the interfacing is fused, leave the piece on a hard flat surface for 15 minutes for it to cool down.

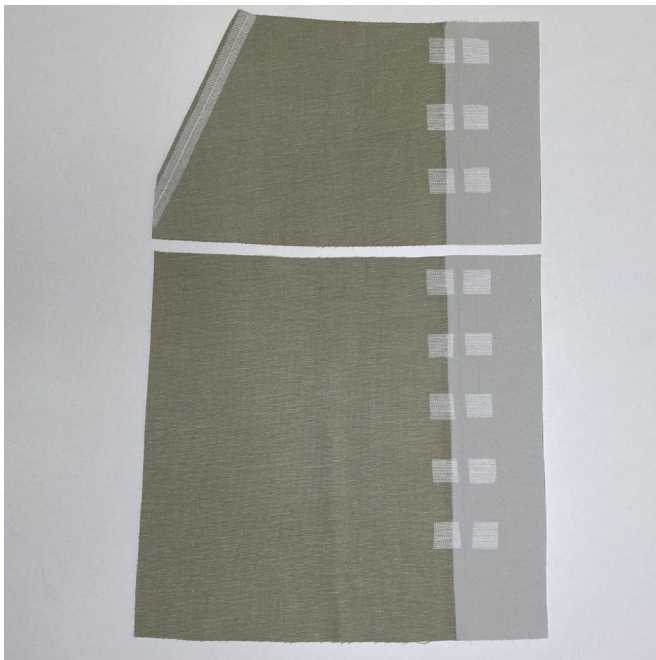


Fully interface the following pieces:

- back waistband – 2 pieces
- left waistband – 2 pieces
- right waistband – 2 pieces.

Interface partially up to the foldline:

- top front skirt – 2 pieces
- middle front skirt – 2 pieces
- bottom front skirt – 2 pieces.



Interface the snap placement with 2×2 cm (3/4×3/4") squares of heavyweight interfacing on the following pieces:

- top front skirt – 2 pieces
- middle front skirt – 2 pieces
- left waistband – 2 pieces
- right waistband – 2 pieces.

Apply bias-cut fusible stay tape to the following:

- pocket seam allowance on the top front skirt.

Apply straight-grain fusible stay tape to the following:

- seam allowances along the long edges of the outer back waistband
- seam allowances along the long and short edges of the outer right and left waistband pieces.