

FROM THE FOUNDER OF THE #VIKISEWS BRAND

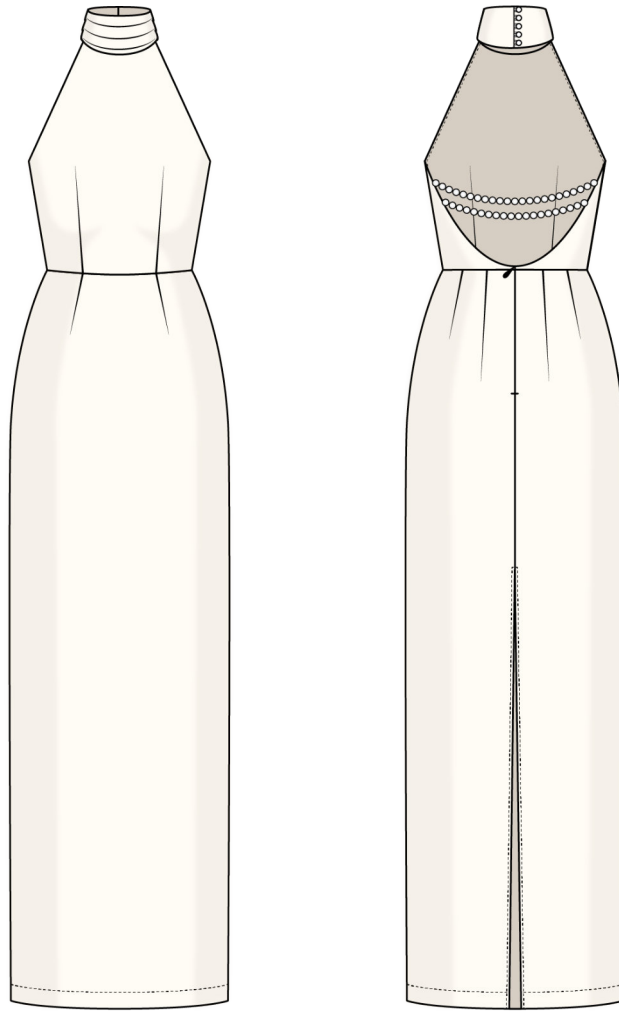


Back in 2016, when I was working on my first set of sewing instructions, I was trying to write them in such a way that even a complete beginner could easily understand and use them to create their very first garment. These instructions laid the foundation for the Vikisews brand, its vision and its mission. I wanted to create modern patterns with the utmost detailed and clear instructions.

Now, with each new collection we are constantly improving our instructions, amending them and adding more relevant details. By the time the final product reaches you, our drafters, correctors, and editors would have spent weeks perfecting every word and every photograph. If you compile a few of our instructions together, you will get a sewing manual that will assist you in sewing all kinds of garments at any difficulty level.

And I would be very happy if these instructions helped you to turn your hobby into a lifelong passion... Enjoy the process! Create your ultimate dream wardrobe! Wear your garments proudly for years to come!

If you have any questions, please contact us at info@vikisews.com — we are always there to help.



ASTER PATTERN DESCRIPTION

Aster is a close-fitting dress with an accentuated waist due to the waist seam. The front of the bodice is shaped with waist darts. The open back is embellished with two strings of beads that secure the bodice. The bodice of the dress is self-lined. The stand collar has an overlay at the front and closes with button loops and fabric-covered buttons at the back. The front and back of the skirt feature waist darts. There is an invisible zipper and a high slit in the center back seam. Aster is above-ankle length.



IMPORTANT!

The contents of this pattern are copyright protected and belong exclusively to Vikisews. You may use Vikisews patterns for personal use. It is prohibited to share Vikisews patterns and instructions with third parties, as well as to publish patterns and instructions online for public access. **Non-compliance with the mentioned rules is a violation of the US copyright law and may result in civil liability and criminal prosecution.**

You may use Vikisews patterns for commercial use, to sew custom-made garments and/or create fashion collections, on the condition that the patterns are solely used in a manufacturing setting and are not further shared with individuals.

TOTAL EASE ALLOWANCE

	Bust ease (estimated)	Waistline ease	Hipline ease
cm	-0.8-0.7	2-3.5	3-4.5
inches	-3/8-1/4	3/4-1 3/8	1 1/8-1 3/4

GARMENT LENGTH

Height, cm	Center back length from waist down, cm	Height, ft	Center back length from waist down, in
1 (154-160)	91	1 (5'1"-5'3")	35 7/8
2 (162-168)	95	2 (5'4"-5'6")	37 3/8
3 (170-176)	99	3 (5'7"-5'9")	39
4 (178-184)	103	4 (5'10"-6'1")	40 1/2

SUGGESTED FABRIC

To sew this dress, choose dress-weight fabrics with the following properties: medium weight, soft, non-stretch or low-stretch. The fiber content can include natural fibers, artificial fibers, blends, or synthetics.

The following fabrics are recommended: satin, natural or artificial silk, sateen, dress-weight viscose, crepe de chine.

Important! We do not recommend stretchy and sheer fabrics.

The dress in the photo is made of viscose. The fabric is medium weight, soft, and low-stretch. The fiber content is 100% viscose. The fabric weight is 180 g/m².

FABRIC AND NOTIONS REQUIREMENTS

1. Main fabric, 140 cm wide, with a directional print/nap, in meters:

Height, cm	Size				
	34-38	40-42	44-46	48-50	52
1 (154-160)	1.55	1.6	1.65	1.7	1.75
2 (162-168)	1.6	1.65	1.7	1.75	1.8
3 (170-176)	1.65	1.7	1.75	1.8	1.85
4 (178-184)	1.7	1.75	1.8	1.85	1.9

Main fabric, 55" wide, with a directional print/nap, in yards:

Height, ft	Size				
	34-38	40-42	44-46	48-50	52
1 (5'1"-5'3")	1 3/4	1 3/4	1 3/4	1 7/8	1 7/8
2 (5'4"-5'6")	1 3/4	1 3/4	1 7/8	1 7/8	2
3 (5'7"-5'9")	1 3/4	1 7/8	1 7/8	2	2
4 (5'10"-6'1")	1 7/8	1 7/8	2	2	2 1/8

2. Knit or woven interfacing, 140 cm wide, for all sizes, in meters:

Height, cm	Meters
1 (154-160)	0.55
2 (162-168)	0.6
3 (170-176)	0.65
4 (178-184)	0.7

Knit or woven interfacing, 55" wide, for all sizes, in yards:

Height, ft	Yards
1 (5'1"-5'3")	5/8
2 (5'4"-5'6")	5/8
3 (5'7"-5'9")	3/4
4 (5'10"-6'1")	3/4

IMPORTANT! When purchasing fabric, please account for shrinkage and buy 5% more than required.

3. Clear jewelry cord (can be replaced with durable thread, such as nylon thread), for all heights, in centimeters:

Size	34	36	38	40	42	44	46	48	50	52
Top cord	49	51	53	55	57	59	61	64	66	68
Bottom cord	41	43	45	47	49	51	53	55	57	59
Total	90	94	98	102	106	110	114	119	123	127

Clear jewelry cord (can be replaced with durable thread, such as nylon thread), for all heights, in inches:

Size	34	36	38	40	42	44	46	48	50	52
Top cord	19 1/4	20 1/8	20 7/8	21 5/8	22 1/2	23 1/4	24	25 1/4	26	26 3/4
Bottom cord	16 1/8	16 7/8	17 3/4	18 1/2	19 1/4	20 1/8	20 7/8	21 5/8	22 1/2	23 1/4
Total	35 3/8	37	38 5/8	40 1/8	41 3/4	43 1/4	44 7/8	46 7/8	48 3/8	50

4. Stitched bias-cut fusible stay tape with stitch reinforcement, 1.5 cm (5/8") wide, for all heights:

Size	34	36	38	40	42	44	46	48	50	52
Meters	1.05	1.1	1.15	1.2	1.25	1.3	1.35	1.4	1.45	1.5
Yards	1 1/8	1 1/4	1 1/4	1 1/4	1 3/8	1 3/8	1 1/2	1 1/2	1 5/8	1 5/8

IMPORTANT! Calculate the exact amount of beads by dividing the required cord length by the bead diameter.

5. Round beads, 8–10 mm (3/8") in diameter — appr. 90–120 pcs

6. One invisible zipper, 25 cm (9 7/8") long

7. Four lobster clasps for jewelry

8. Six button blanks (plus one or two spare ones), 9 mm (just under 3/8") in diameter

9. Matching thread — 4 spools (1 spool for the sewing machine + 3 spools for the overlocker)

TOOLS AND EQUIPMENT

- sewing machine for construction
- overlocker for finishing raw edges. This may be replaced with a stretch overlock stitch or a zigzag stitch on the sewing machine (overlock or zigzag stitch width 2–3 mm, stitch length 2.5 mm)
- invisible zipper foot for the sewing machine
- one-sided foot for the sewing machine
- extra-fine pins for delicate fabrics
- loop turner or thick needle
- press tool and molds for button covering

PATTERN PIECES LIST

1. From main fabric:

- front bodice — cut 2 on fold
- back bodice — cut 4
- front skirt — cut 1 on fold
- back skirt — cut 2
- front stand collar overlay — cut 1 on fold
- front stand collar — cut 1 on fold
- back stand collar — cut 4
- front skirt facing — cut 1 on fold
- back skirt facing — cut 2
- rouleau strap for button loops — cut 1

2. From interfacing:

- front stand collar — cut 1 on fold
- back stand collar — cut 2
- front skirt facing — cut 1 on fold
- back skirt facing — cut 2

IMPORTANT! Don't forget to transfer all pattern markings and notches onto the fabric.

Additionally, cut the following from interfacing:

- two strips, 2 cm (3/4") wide, to interface the slit seam allowances
- two strips, 2 cm (3/4") wide, to interface the zipper seam allowances

The interfacing strips should be cut on the straight grain (parallel to the selvedge).

SEAM ALLOWANCES

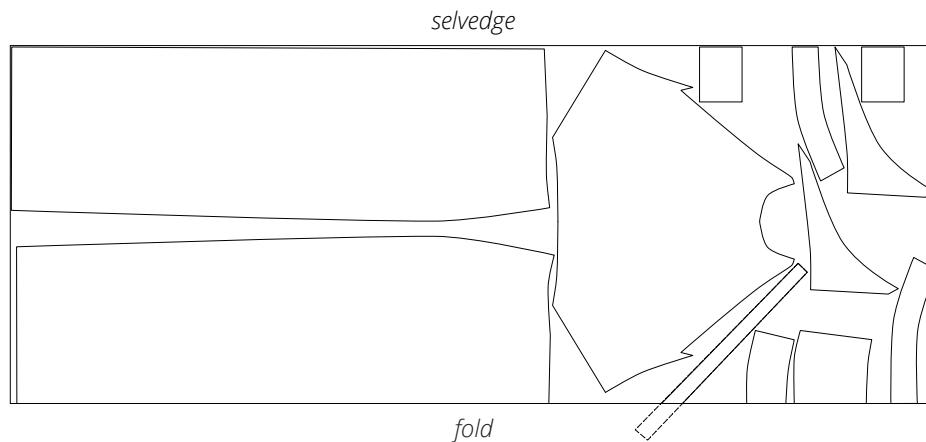
All pattern pieces include seam allowances as follows:

- garment hem allowance — 4 cm (1 5/8")
- slit seam allowance — 1.5 cm (5/8")
- all other edges — 1 cm (3/8")

Take this into account when laying out pattern pieces on the fabric.

CUTTING LAYOUT

Main fabric, 140 cm (55") wide, with a directional print/nap,
cut on fold, for all sizes in all heights



Attention! Cut two front bodice pieces on a single layer.
Cut only one rouleau strap for button loops.

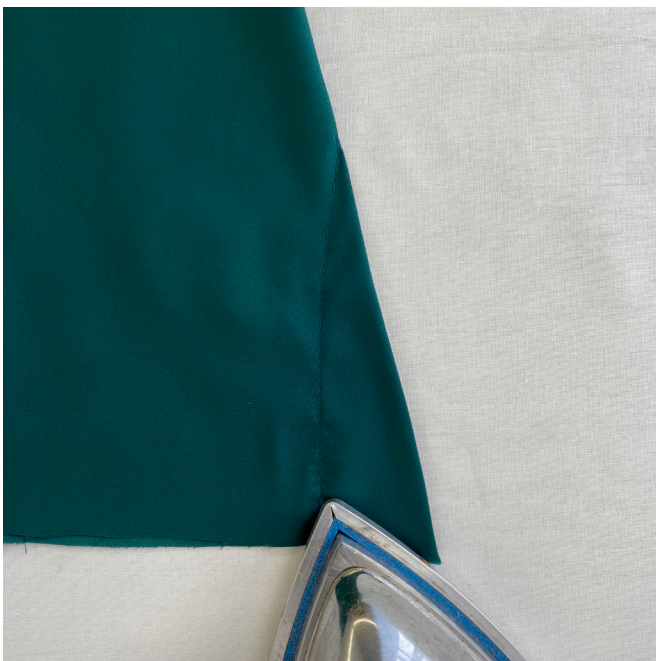


Machine-stitch the darts. Backstitch at the raw edge and leave long thread tails at the dart point.



Remove the basting stitches.

Tie the thread tails into a knot and hide them inside the dart bulk using a hand-sewing needle.



Press the darts flat.