

# FROM THE FOUNDER OF THE #VIKISEWS BRAND

---



Back in 2016, when I was working on my first set of sewing instructions, I was trying to write them in such a way that even a complete beginner could easily understand and use them to create their very first garment. These instructions laid the foundation for the Vikisews brand, its vision and its mission. I wanted to create modern patterns with the utmost detailed and clear instructions.

Now, with each new collection we are constantly improving our instructions, amending them and adding more relevant details. By the time the final product reaches you, our drafters, correctors, and editors would have spent weeks perfecting every word and every photograph. If you compile a few of our instructions together, you will get a sewing manual that will assist you in sewing all kinds of garments at any difficulty level.

And I would be very happy if these instructions helped you to turn your hobby into a lifelong passion... Enjoy the process! Create your ultimate dream wardrobe! Wear your garments proudly for years to come!

If you have any questions, please contact us at [info@vikisews.com](mailto:info@vikisews.com) — we are always there to help.



## GOLDIE PATTERN DESCRIPTION

---

Goldie is a semi-fitted bias-cut dress with an accentuated waist. There are bust darts on the front and waist darts on the back. The dress features a V-shaped neckline both on the front and back. The neckline and armholes are finished with bias binding. Goldie is above-ankle length.



## IMPORTANT!

---

The contents of this pattern are copyright protected and belong exclusively to Vikisews. You may use Vikisews patterns for personal use. It is prohibited to share Vikisews patterns and instructions with third parties, as well as to publish patterns and instructions online for public access. **Non-compliance with the mentioned rules is a violation of the US copyright law and may result in civil liability and criminal prosecution.**

You may use Vikisews patterns for commercial use, to sew custom-made garments and/or create fashion collections, on the condition that the patterns are solely used in a manufacturing setting and are not further shared with individuals.

# TOTAL EASE ALLOWANCE

	Bust ease	Waistline ease	Hipline ease
cm	0.6–1.1	13.7–17.7	10.5
inches	1/4–3/8	5 3/8–7	4 1/8

# GARMENT LENGTH

Height, cm	Back length from waist down, cm	Height, ft	Back length from waist down, in
1 (154–160)	80	1 (5'1"–5'3")	31 1/2
2 (162–168)	84	2 (5'4"–5'6")	33 1/8
3 (170–176)	88	3 (5'7"–5'9")	34 5/8
4 (178–184)	92	4 (5'10"–6'1")	36 1/4

**IMPORTANT!** Due to the bias-cut design and the choice of fabric, the garment length can be increased!

# SUGGESTED FABRIC

To sew this dress, choose dress-weight fabrics with the following properties: medium-weight, soft, non-stretch or low-stretch. The fiber content can include natural fibers, artificial fibers, blends, or synthetics.

The following fabrics are recommended: satin, natural or artificial silk, sateen, thin dress-weight viscose, challis, opaque chiffon.

The dress in the photo is made of natural silk. The fabric is medium weight, soft, and low-stretch. The fiber content is a blend of silk (97%) and elastane (3%). The fabric weight is 110 g/m<sup>2</sup>.

# FABRIC AND NOTIONS REQUIREMENTS

1.1. Main fabric, 140 cm wide, with a directional print, in meters:

Height, cm	Size									
	34	36	38	40	42	44	46	48	50	52
1 (154–160)	1.75	1.8	1.85	1.9	1.95	2	2.05	2.1	2.15	2.2
2 (162–168)	1.8	1.85	1.9	1.95	2	2.1	2.15	2.2	2.25	2.3
3 (170–176)	1.9	1.9	2	2.05	2.1	2.15	2.2	2.25	2.3	2.35
4 (178–184)	1.95	2	2.05	2.1	2.15	2.2	2.25	2.35	2.35	-

Main fabric, 55" wide, with a directional print, in yards:

Height, ft	Size									
	34	36	38	40	42	44	46	48	50	52
1 (5'1"–5'3")	1 7/8	2	2	2 1/8	2 1/8	2 1/8	2 1/4	2 1/4	2 3/8	2 3/8
2 (5'4"–5'6")	2	2	2 1/8	2 1/8	2 1/8	2 1/4	2 3/8	2 3/8	2 1/2	2 1/2
3 (5'7"–5'9")	2 1/8	2 1/8	2 1/8	2 1/4	2 1/4	2 3/8	2 3/8	2 1/2	2 1/2	2 5/8
4 (5'10"–6'1")	2 1/8	2 1/8	2 1/4	2 1/4	2 3/8	2 3/8	2 1/2	2 5/8	2 5/8	-

1.2. Main fabric, 150 cm wide, with a directional print, in meters:

Height, cm	Size									
	34	36	38	40	42	44	46	48	50	52
1 (154–160)	1.65	1.7	1.75	1.8	1.85	1.9	1.95	2	2.05	2.1
2 (162–168)	1.7	1.75	1.85	1.9	1.95	2	2.05	2.1	2.15	2.2
3 (170–176)	1.85	1.85	1.9	1.95	2	2.05	2.1	2.15	2.2	2.25
4 (178–184)	1.85	1.9	1.95	2	2.05	2.1	2.2	2.25	2.3	2.35

Main fabric, 59" wide, with a directional print, in yards:

Height, ft	Size									
	34	36	38	40	42	44	46	48	50	52
1 (5'1"–5'3")	1 3/4	1 7/8	1 7/8	2	2	2 1/8	2 1/8	2 1/8	2 1/4	2 1/4
2 (5'4"–5'6")	1 7/8	1 7/8	2	2 1/8	2 1/8	2 1/8	2 1/4	2 1/4	2 3/8	2 3/8
3 (5'7"–5'9")	2	2	2 1/8	2 1/8	2 1/8	2 1/4	2 1/4	2 3/8	2 3/8	2 1/2
4 (5'10"–6'1")	2	2 1/8	2 1/8	2 1/8	2 1/4	2 1/4	2 3/8	2 1/2	2 1/2	2 5/8

**IMPORTANT!** When purchasing fabric, please account for shrinkage and buy 5% more than required.

2. Bias binding tape, 3 cm (1 5/8") wide, cut out of the main fabric — 2.5 m (2 3/4 yd).
3. Lightweight knit interfacing, 140 cm (55") wide, for all sizes and heights — 5 cm (2"). Alternatively, stitched bias-cut fusible stay tape, 1 cm (3/8") wide — 2.5 m (2 3/4 yd).
4. Matching thread — 1 spool for the sewing machine.

## TOOLS AND EQUIPMENT

- sewing machine for construction
- stitch-in-the-ditch foot for the sewing machine

## PATTERN PIECES LIST

### 1. From main fabric:

- front — cut 1
- back — cut 1

To interface the seam allowances, use 1 cm (3/8") wide strips of interfacing cut on the crosswise grain (with the grainline going along the short edge of the strip). Alternatively, you may use ready-made stitched bias-cut fusible stay tape.

### 2. From interfacing:

- strips for neckline seam allowances on the front and back pieces
- strips for armhole seam allowances on the front and back pieces

**IMPORTANT!** Don't forget to transfer all pattern markings and notches onto the fabric.

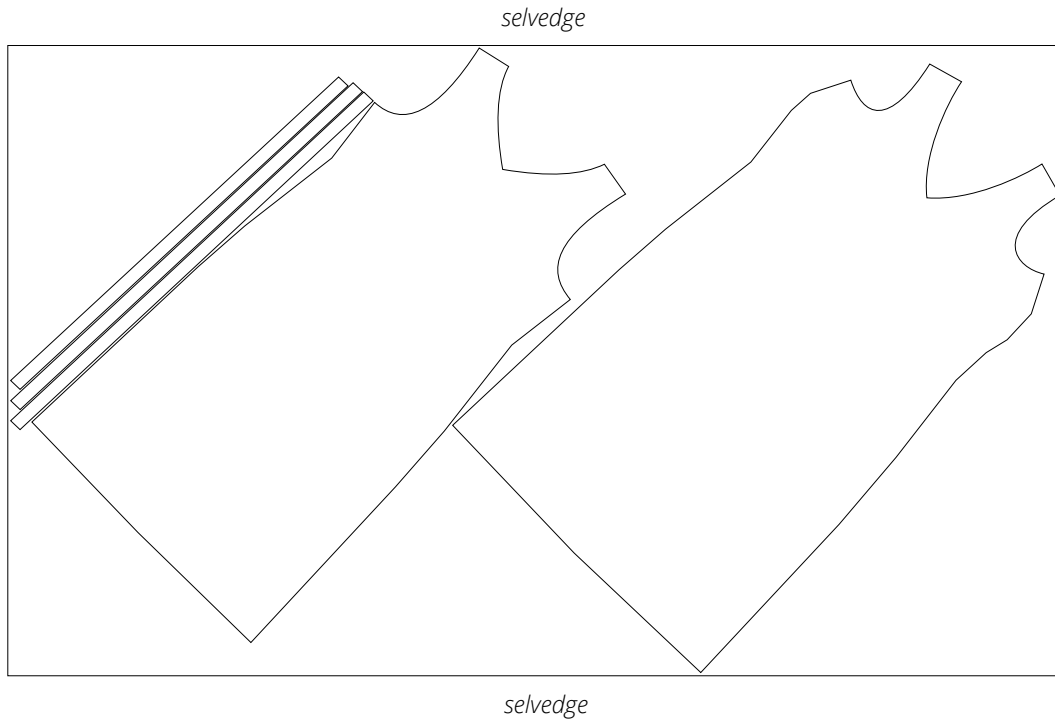
## SEAM ALLOWANCES

All pattern pieces include 1 cm (3/8") seam allowances. Take this into account when laying out pattern pieces on the fabric.

# CUTTING LAYOUT

---

Main fabric, 140–150 cm (55–59") wide, with a directional print, cut on a single layer, for all sizes in all heights



READY? LET'S GET SEWING!

---



With the right side of the garment facing out, press the seam allowances carefully towards the front or back.



Turn the garment wrong side out. Hand-baste the shoulder and side seams at 4-5 mm (just under 1/4") from the edge, making sure the trimmed seam allowances are enclosed inside the new seams.



Stitch the shoulder and side seams on the sewing machine at 4-5 mm (just under 1/4") from the edge.