

# FROM THE FOUNDER OF THE #VIKISEWS BRAND

---



Back in 2016, when I was working on my first set of sewing instructions, I was trying to write them in such a way that even a complete beginner could easily understand and use them to create their very first garment. These instructions laid the foundation for the Vikisews brand, its vision and its mission. I wanted to create modern patterns with the utmost detailed and clear instructions.

Now, with each new collection we are constantly improving our instructions, amending them and adding more relevant details. By the time the final product reaches you, our drafters, correctors, and editors would have spent weeks perfecting every word and every photograph. If you compile a few of our instructions together, you will get a sewing manual that will assist you in sewing all kinds of garments at any difficulty level.

And I would be very happy if these instructions helped you to turn your hobby into a lifelong passion... Enjoy the process! Create your ultimate dream wardrobe! Wear your garments proudly for years to come!

If you have any questions, please contact us at [info@vikisews.com](mailto:info@vikisews.com) — we are always there to help.



## MARSHA PATTERN DESCRIPTION

---

Marsha is a close-fitting dress featuring a deep square neckline with soft rounded corners. The front and back neckline is finished with facings. The dress has long, set-in, slightly flared sleeves. Marsha is above-ankle length.



## IMPORTANT!

---

The contents of this pattern are copyright protected and belong exclusively to Vikisews. You may use Vikisews patterns for personal use. It is prohibited to share Vikisews patterns and instructions with third parties, as well as to publish patterns and instructions online for public access. **Non-compliance with the mentioned rules is a violation of the US copyright law and may result in civil liability and criminal prosecution.**

You may use Vikisews patterns for commercial use, to sew custom-made garments and/or create fashion collections, on the condition that the patterns are solely used in a manufacturing setting and are not further shared with individuals.

## TOTAL EASE ALLOWANCE

	Bust ease	Waistline ease	Hipline ease	Upper arm ease
cm	-7.1 – (-7.3)	2.3–1.7	-1.6–0.8	0.5
inches	-2 3/4 – (-2 7/8)	7/8–5/8	-5/8–3/8	1/4

## GARMENT LENGTH, SLEEVE LENGTH

Height, cm	Back length, cm	Sleeve length, cm
1 (154–160)	121	62
2 (162–168)	125	64
3 (170–176)	129	66
4 (178–184)	133	68

Height, ft	Back length, in	Sleeve length, in
1 (5'1"–5'3")	47 5/8	24 3/8
2 (5'4"–5'6")	49 1/4	25 1/4
3 (5'7"–5'9")	50 3/4	26
4 (5'10"–6'1")	52 3/8	26 3/4

## SUGGESTED FABRIC

To sew this garment, choose soft, low-stretch or medium-stretch, medium-weight fabrics typically used for dresses. The fiber content can include natural fibers, artificial fibers, blends, or synthetics.

Recommended fabrics: stretch velvet, sweater knits, double knits, knits.

**IMPORTANT!** We recommend using only stretchy fabrics for this garment.

You can determine the stretch factor of the fabric yourself. Mark 10 cm (4") along the crosswise grain of the fabric, lay a ruler next to the marked section, and stretch the fabric. Divide the measurement you get by 10.

The dress in the photos is made of a knit fabric with metallic thread. The fabric is medium weight, soft, and low-stretch. The fabric content is 80% wool, 15% metallic thread, and 5% elastane. The fabric weight is 260 g/m<sup>2</sup>.

# FABRIC AND NOTIONS REQUIREMENTS

1. Main fabric, 140 cm wide, with a directional print/nap, in meters:

Height, cm	Size			
	34–38	40–46	48	52
1 (154–160)	1.95	1.95	2	1.7 (part 1) + 0.7 (part 2) = 2.4
2 (162–168)	2	2.05	2.05	1.7 (part 1) + 0.7 (part 2) = 2.4
3 (170–176)	2.1	2.1	2.1	1.75 (part 1) + 0.75 (part 2) = 2.5
4 (178–184)	2.15	2.15	2.15	1.8 (part 1) + 0.75 (part 2) = 2.55

Main fabric, 55" wide, with a directional print/nap, in yards:

Height, ft	Size		
	34–38	40–48	50–52
1 (5'1"–5'3")	2 1/8	2 1/8	1 7/8 (part 1) + 3/4 (part 2) = 2 5/8
2 (5'4"–5'6")	2 1/8	2 1/4	1 7/8 (part 1) + 3/4 (part 2) = 2 5/8
3 (5'7"–5'9")	2 1/4	2 1/4	1 7/8 (part 1) + 7/8 (part 2) = 2 3/4
4 (5'10"–6'1")	2 3/8	2 3/8	2 (part 1) + 7/8 (part 2) = 2 7/8

**IMPORTANT!** When purchasing fabric, please account for shrinkage and buy 5% more than required.

2. Stitched bias-cut fusible stay tape with stitch reinforcement, 1.5 cm (5/8") wide, for all heights:

Size	34	36–38	40–42	44–46	48–50	52
meters	1.25	1.3	1.35	1.4	1.45	1.5
yards	1 3/8	1 3/8	1 1/2	1 1/2	1 5/8	1 5/8

3. Matching thread – 5 spools (1 spool for the sewing machine + 4 spools for the overlocker).

# TOOLS AND EQUIPMENT

---

- sewing machine for construction
- overlocker for construction and finishing raw edges. It can be replaced with a stretch overlock stitch or a zigzag stitch on the sewing machine (overlock or zigzag stitch width 2–3 mm, stitch length 2.5 mm)
- coverstitch or coverlock machine for finishing the garment hem and sleeve hems. If you don't have a coverstitch machine, it can be replaced with a twin needle on any regular sewing machine that can do a zigzag stitch

## PATTERN PIECES LIST

---

From main fabric:

- front – cut 1 on fold
- back – cut 1 on fold
- sleeve – cut 2
- front facing – cut 1 on fold
- back facing – cut 1 on fold

***IMPORTANT!** Don't forget to transfer all pattern markings and notches onto the fabric.*

## SEAM ALLOWANCES

---

All pattern pieces include seam allowances as follows:

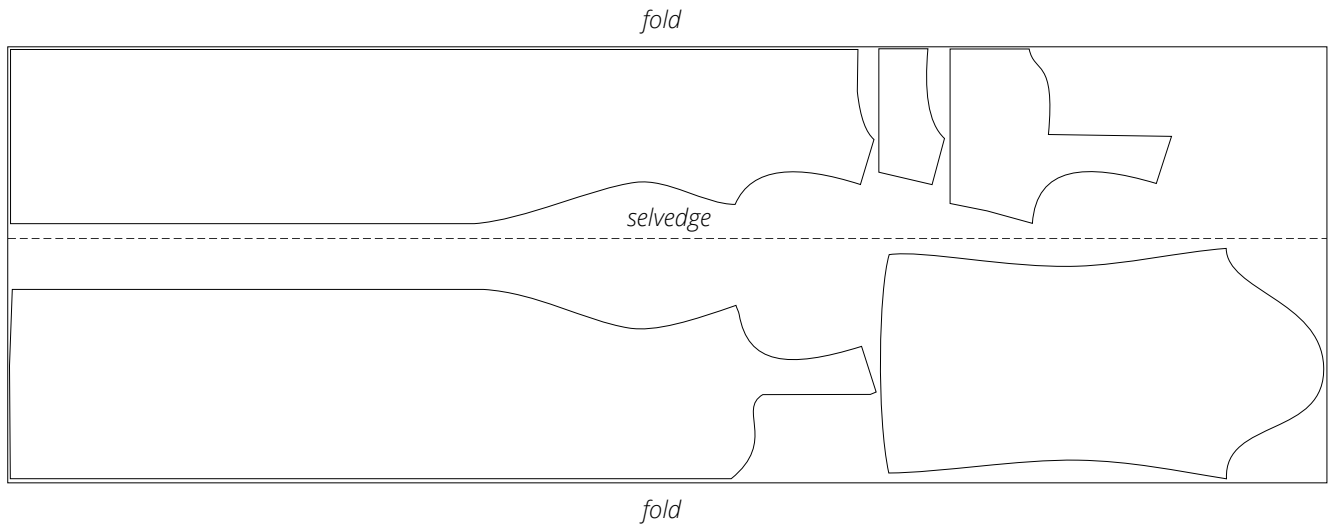
- garment front hem allowance – 3 cm (1 1/8")
- garment back hem allowance – 3 cm (1 1/8")
- sleeve hem allowance – 3 cm (1 1/8")
- all other edges – 1 cm (3/8").

Take this into account when laying out pattern pieces on the fabric.

# CUTTING LAYOUT

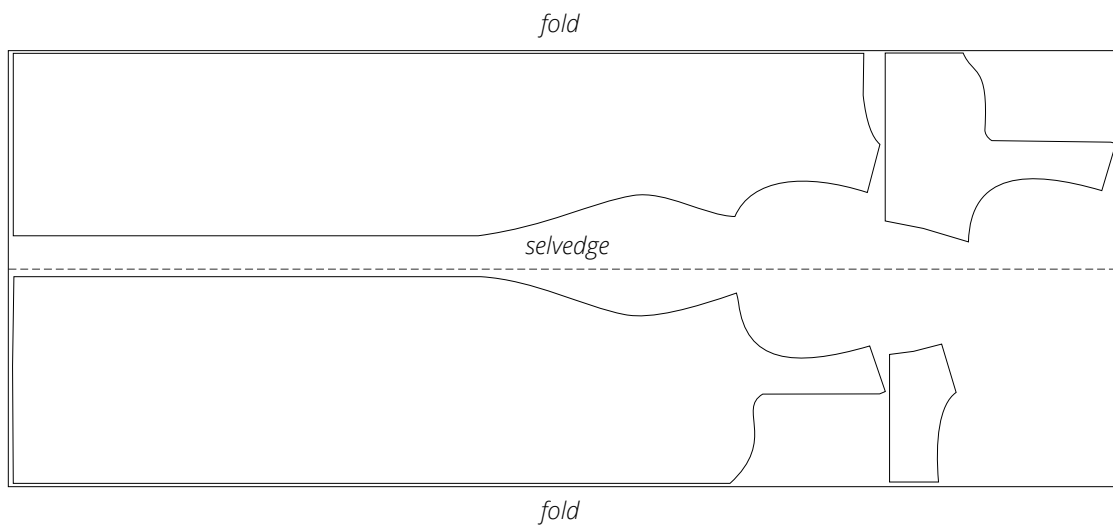
---

Main fabric, 140 cm (55") wide, with a directional print/nap,  
cut with two folds, for sizes 34-48 in all heights



Main fabric, 140 cm (55") wide, with a directional print/nap,  
cut in two steps, for sizes 50-52 in all heights

Step 1: cut with two folds:







Press the seams flat.



Press the seam allowances towards the front piece.



With the right side facing up, finish the bottom edge of the front facing piece on the overlocker.  
Press the seam.