

FROM THE FOUNDER OF THE #VIKISEWS BRAND



Back in 2016, when I was working on my first set of sewing instructions, I was trying to write them in such a way that even a complete beginner could easily understand and use them to create their very first garment. These instructions laid the foundation for the Vikisews brand, its vision and its mission. I wanted to create modern patterns with the utmost detailed and clear instructions.

Now, with each new collection we are constantly improving our instructions, amending them and adding more relevant details. By the time the final product reaches you, our drafters, correctors, and editors would have spent weeks perfecting every word and every photograph. If you compile a few of our instructions together, you will get a sewing manual that will assist you in sewing all kinds of garments at any difficulty level.

And I would be very happy if these instructions helped you to turn your hobby into a lifelong passion... Enjoy the process! Create your ultimate dream wardrobe! Wear your garments proudly for years to come!

If you have any questions, please contact us at info@vikisews.com — we are always there to help.



FERN PATTERN DESCRIPTION

Fern is a loose-fitting jacket with a straight cut. It features yokes and princess seams at the front and back and a grown-on center front placket with a stud button and buttonhole closure. The shoulder seam has been moved toward the front. The front has inner patch pockets with buttoned flaps. The shirt-style collar has a separate collar stand. The long, two-piece shirt sleeves feature a slit in the elbow seam and a cuff at the bottom. The slit laces up with a decorative cord threaded through grommets. The bottom edge of the jacket features an applied waistband with two tabs. The sleeve cuff and the tabs on the waistband have a stud button and buttonhole closure. All seams are topstitched. Fern is below-hip length.



IMPORTANT!

The contents of this pattern are copyright protected and belong exclusively to Vikisews. You may use Vikisews patterns for personal use. It is prohibited to share Vikisews patterns and instructions with third parties, as well as to publish patterns and instructions online for public access. **Non-compliance with the mentioned rules is a violation of the US copyright law and may result in civil liability and criminal prosecution.**

You may use Vikisews patterns for commercial use, to sew custom-made garments and/or create fashion collections, on the condition that the patterns are solely used in a manufacturing setting and are not further shared with individuals.

TOTAL EASE ALLOWANCE

	Bust ease	Waistline ease	Hipline ease	Upper arm ease
cm	47.4–50.4	62.9–67.4	31.8–36.1	19–20.9
inches	18 5/8–19 7/8	24 3/4–26 1/2	12 1/2–14 1/4	7 1/2–8 1/4

GARMENT LENGTH, SLEEVE LENGTH

Height, cm	Center back length including waistband width, cm	Sleeve length including shoulder width and cuff, cm
1 (154–160)	69.4–71.8	73.4–77.6
2 (162–168)	72.6–75	75.1–79.3
3 (170–176)	75.4–77.8	76.9–81.1
4 (178–184)	78.4–80.8	78.8–82.9

Height, ft	Center back length including waistband width, in	Sleeve length including shoulder width and cuff, in
1 (5'1"–5'3")	27 3/8–28 1/4	28 7/8–30 1/2
2 (5'4"–5'6")	28 5/8–29 1/2	29 5/8–31 1/4
3 (5'7"–5'9")	29 5/8–30 5/8	30 1/4–31 7/8
4 (5'10"–6'1")	30 7/8–31 3/4	31–32 5/8

SUGGESTED FABRIC

To sew this jacket, choose medium- to heavyweight, low-stretch fabrics made of natural fibers, artificial fibers, blends, or synthetics.

The following fabrics are recommended: denim, corduroy.

The jacket in the photo is made of denim fabric. The fabric is medium weight and has very little stretch. The fiber content is 100% cotton. The fabric weight is 300 g/m².

IMPORTANT! Don't forget to transfer all pattern markings and notches onto the fabric.

Additionally, cut the following from interfacing:

- four strips, 6 cm (2 3/8") wide (length according to the pattern), to interface the grown-on placket on the center front and front yoke pieces.

The interfacing strips should be cut on the straight grain (parallel to the selvedge).

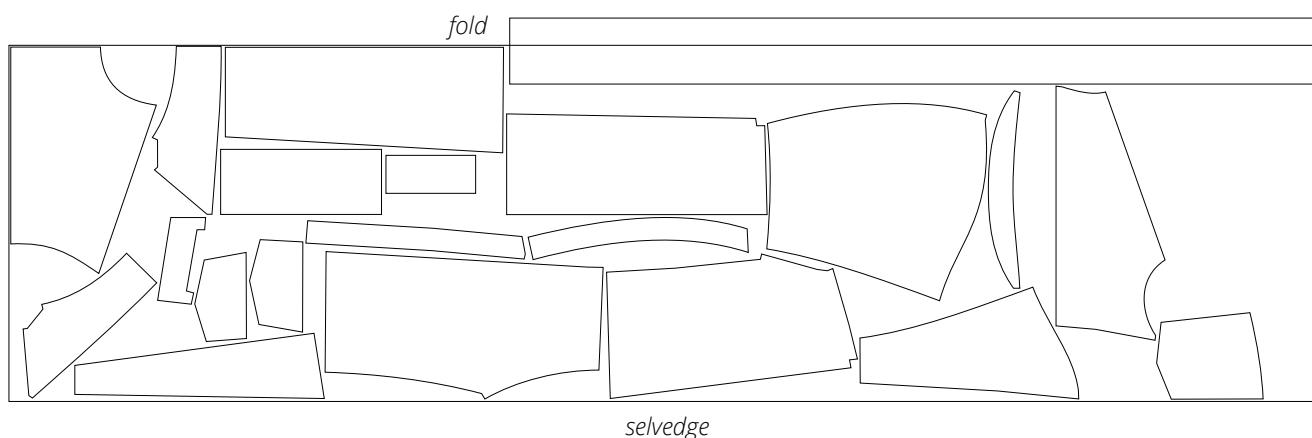
SEAM ALLOWANCES

All pattern pieces include 1 cm (3/8") seam allowances.

Take this into account when laying out pattern pieces on the fabric.

CUTTING LAYOUT

Main fabric, 140 cm (55") wide, with a directional print/nap, cut on fold, for all sizes, heights 1–2



Attention! Cut only one waistband piece on a single layer out of leftover fabric.



Place the pocket facing right sides together with the garment front, following the pattern marking. Align the edges and pin.



Stitch on the sewing machine along the pocket opening, backstitching at the beginning and end of the seam.

Press the seam.

Grade the seam by trimming the seam allowances on the facing down to 5 mm (just under 1/4").



Clip into the corners of the pocket opening, up to 1 mm from the stitching line.